

84-10-2
National Bureau of Standards
Library, E-01 Admin. Bldg.

JUL 22 1970

NBS TECHNICAL NOTE 536

ED STATES
TMENT OF
MERCER
ICATION



DISCLOSURES ON:

Viscous Damped Wind Vane
Nonskid Road or Runway
Regrooved Pneumatic Tire With Removable Inserts
Device for Radially Positioning a Rotating Wheel
Method for Fabricating Precision Waveguide Sections
Distortion-Cancelling Loudspeaker System
Cryogenic Fluid Density Measurement System
Controlled-Atmosphere Weathering Device

U.S.
ARTMENT
OF
MERCER
National
Bureau
of
Standards

NATIONAL BUREAU OF STANDARDS

The National Bureau of Standards¹ was established by an act of Congress March 3, 1901. Today, in addition to serving as the Nation's central measurement laboratory, the Bureau is a principal focal point in the Federal Government for assuring maximum application of the physical and engineering sciences to the advancement of technology in industry and commerce. To this end the Bureau conducts research and provides central national services in four broad program areas. These are: (1) basic measurements and standards, (2) materials measurements and standards, (3) technological measurements and standards, and (4) transfer of technology.

The Bureau comprises the Institute for Basic Standards, the Institute for Materials Research, the Institute for Applied Technology, the Center for Radiation Research, the Center for Computer Sciences and Technology, and the Office for Information Programs.

THE INSTITUTE FOR BASIC STANDARDS provides the central basis within the United States of a complete and consistent system of physical measurement; coordinates that system with measurement systems of other nations; and furnishes essential services leading to accurate and uniform physical measurements throughout the Nation's scientific community, industry, and commerce. The Institute consists of an Office of Measurement Services and the following technical divisions:

Applied Mathematics—Electricity—Metrology—Mechanics—Heat—Atomic and Molecular Physics—Radio Physics²—Radio Engineering²—Time and Frequency²—Astrophysics²—Cryogenics.²

THE INSTITUTE FOR MATERIALS RESEARCH conducts materials research leading to improved methods of measurement standards, and data on the properties of well-characterized materials needed by industry, commerce, educational institutions, and Government; develops, produces, and distributes standard reference materials; relates the physical and chemical properties of materials to their behavior and their interaction with their environments; and provides advisory and research services to other Government agencies. The Institute consists of an Office of Standard Reference Materials and the following divisions:

Analytical Chemistry—Polymers—Metallurgy—Inorganic Materials—Physical Chemistry.

THE INSTITUTE FOR APPLIED TECHNOLOGY provides technical services to promote the use of available technology and to facilitate technological innovation in industry and Government; cooperates with public and private organizations in the development of technological standards, and test methodologies; and provides advisory and research services for Federal, state, and local government agencies. The Institute consists of the following technical divisions and offices:

Engineering Standards—Weights and Measures—Invention and Innovation—Vehicle Systems Research—Product Evaluation—Building Research—Instrument Shops—Measurement Engineering—Electronic Technology—Technical Analysis.

THE CENTER FOR RADIATION RESEARCH engages in research, measurement, and application of radiation to the solution of Bureau mission problems and the problems of other agencies and institutions. The Center consists of the following divisions:

Reactor Radiation—Linac Radiation—Nuclear Radiation—Applied Radiation.

THE CENTER FOR COMPUTER SCIENCES AND TECHNOLOGY conducts research and provides technical services designed to aid Government agencies in the selection, acquisition, and effective use of automatic data processing equipment; and serves as the principal focus for the development of Federal standards for automatic data processing equipment, techniques, and computer languages. The Center consists of the following offices and divisions:

Information Processing Standards—Computer Information—Computer Services—Systems Development—Information Processing Technology.

THE OFFICE FOR INFORMATION PROGRAMS promotes optimum dissemination and accessibility of scientific information generated within NBS and other agencies of the Federal Government; promotes the development of the National Standard Reference Data System and a system of information analysis centers dealing with the broader aspects of the National Measurement System, and provides appropriate services to ensure that the NBS staff has optimum accessibility to the scientific information of the world. The Office consists of the following organizational units:

Office of Standard Reference Data—Clearinghouse for Federal Scientific and Technical Information³—Office of Technical Information and Publications—Library—Office of Public Information—Office of International Relations.

¹ Headquarters and Laboratories at Gaithersburg, Maryland, unless otherwise noted; mailing address Washington, D.C. 20234.

² Located at Boulder, Colorado 80302.

³ Located at 5285 Port Royal Road, Springfield, Virginia 22151.

200.
10 0
53
536
70

U.S.
500

UNITED STATES DEPARTMENT OF COMMERCE

Maurice H. Stans, Secretary

NATIONAL BUREAU OF STANDARDS • Lewis M. Branscomb, Director



7
TECHNICAL NOTE 536

ISSUED JUNE 1970

Nat. Bur. Stand. (U.S.), Tech Note 536, 25 pages (June 1970)

CODEN: NBTNA

DISCLOSURES ON:

- Viscous Damped Wind Vane
- Nonskid Road or Runway
- Regrooved Pneumatic Tire With Removable Inserts
- Device for Radially Positioning a Rotating Wheel
- Method for Fabricating Precision Waveguide Sections
- Distortion-Cancelling Loudspeaker System
- Cryogenic Fluid Density Measurement System
- Controlled-Atmosphere Weathering Device

Editors: David Robbins and Alvin J. Englert

Patent Advisor's Office
National Bureau of Standards
Washington, D. C. 20234



NBS Technical Notes are designed to supplement the Bureau's regular publications program. They provide a means for making available scientific data that are of transient or limited interest. Technical Notes may be listed or referred to in the open literature.

PREFACE

This NBS Technical Note is one of a continuing series entitled "Disclosures on" This series consists of short descriptions of recent developments from the Department of Commerce primary operating units, departmental staff offices, and their contractors. It is believed that these developments have important commercial applications. Unless otherwise stated in the description of a development, the property rights therein have been retained by the United States as represented by the Secretary of Commerce.

Previous NBS Technical Notes in this series are NBS Technical Notes 237, 253, 263, 282, 287, 295, 437 and 440.

David Robbins
Patent Advisor

CONTENTS

<u>Title</u>	<u>Author(s)</u>	<u>Page</u>
Viscous Damped Wind Vane	Donald T. Acheson Herman H. Crouser	1
Nonskid Road or Runway	F. Cecil Brenner	4
Regrooved Pneumatic Tire with Removable Inserts	F. Cecil Brenner	6
Device for Radially Positioning a Rotating Wheel	Delmar J. Collenberger	8
Method for Fabricating Precision Waveguide Sections	Delmar J. Collenberger William J. Foote George R. Gieseke	10
Distortion-Cancelling Loudspeaker System	G. Franklin Montgomery	14
Cryogenic Fluid Density Measurement System	Wallace J. Alspach Charles E. Miller	16
Controlled-Atmosphere Weathering Device	William F. Brucksch, Jr.	19

ABSTRACT

This Note describes and illustrates eight developments that are believed to embody interesting and unusual solutions to current problems in their fields.

KEY WORDS

Accelerated weathering test; acoustic distortion, cancelling; averaging wind vane; cryogen density, measuring; distortion-cancelling loudspeakers; grooved runway; hydroplaning skidding, prevention of; loudspeaker system; photoactivated weathering test; radial positioning, wheel on shaft; rubber-surfaced road; slush cryogen density; tire groove insert; tire regrooving; waveguide, precision fabrication; waveguide, adjustable width; weathering test; wheel-shaft angle, shifting during rotation; wind vane, damped.

VISCOUS DAMPED WIND VANE

Donald T. Acheson
Herman H. Crouser

This instrument continuously displays average--rather than instantaneous--wind direction. As shown in Fig. 1, it includes a wind vane 10 secured to a vane shaft 12 that rotates in suitable bearings, not shown. The vane shaft 12 has a crank arm 14 and a crank shaft 16. A pulley 18 having a bearing 19 rotates on the crank shaft 16. A coil spring 20 is looped about the pulley 18, as shown in Fig. 2. The ends of spring 20 are connected to pins 21 that are fastened to a circular plate 22. The hub of plate 22 is fastened to an output shaft 24 that rotates in bearings 26 mounted in a stationary housing 28. The housing 28 has a ring-shaped well 27 that is filled with a viscous silicone damping fluid 30. A damping cylinder 32 formed integrally with the circular plate 22 dips into the damping fluid 30. The output shaft 24 drives a remote wind direction indicator 34 through a connection, e.g., electrical, represented by the dashed line 33. A compass card 35 displays the compass directions.

In the operation of the instrument, the wind vane 10 rotates the vane shaft 12, and therefore cranks the pulley 18, in accordance with the instantaneous wind direction. The pulley 18 exerts a torque on the plate 22 through the spring 20. The plate 22 however is restrained by the damping force exerted on the damping cylinder 32 by the viscous fluid 30 in the stationary well 27. Therefore the plate 22, and the output shaft 24 and indicator 34 connected thereto, are constrained to the average angular position of the wind vane 10. In other words, the output shaft 24 and indicator 34 effectively do not respond to fluctuations in wind direction that average to zero, but only to sustained changes in wind direction.

VISCOUS DAMPED WIND VANE

Donald T. Acheson
Herman H. Crouser

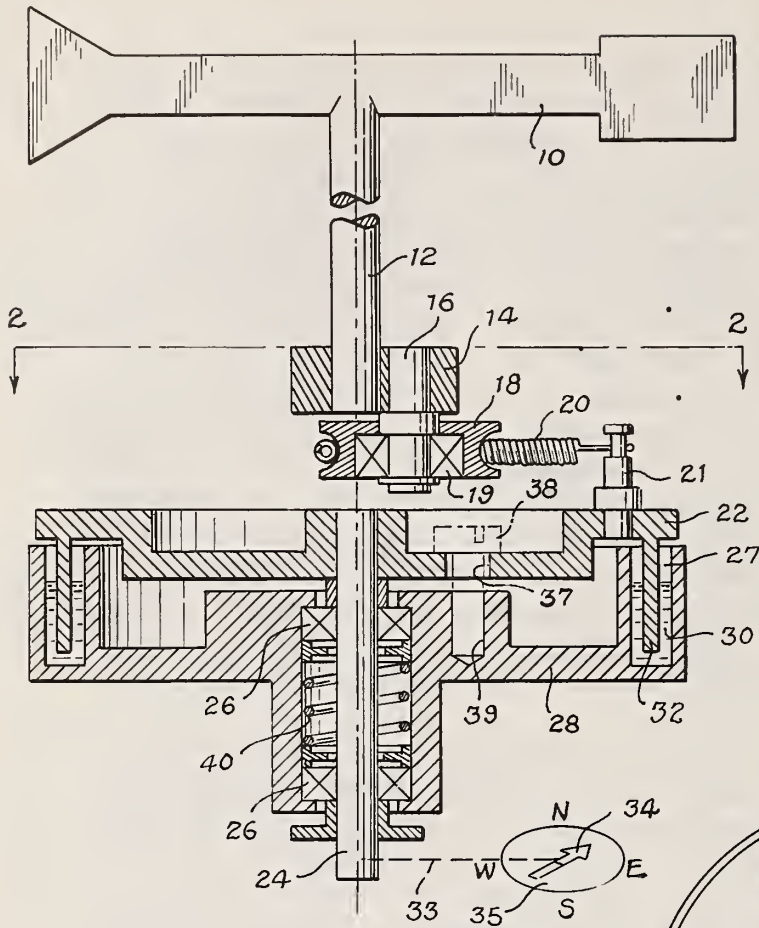
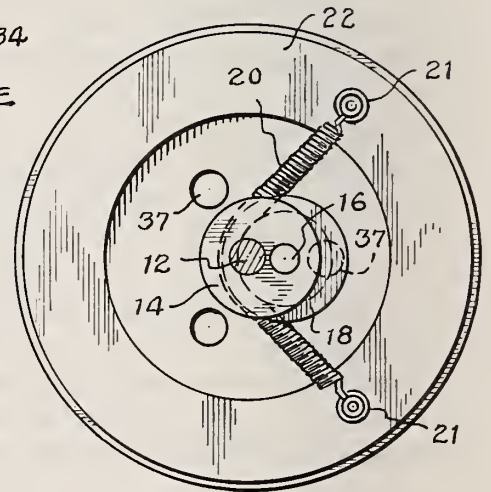


Fig. 1

Fig. 2



Since the spring 20 is not fastened to the crank shaft 16 but rather is looped about the pulley 18 that rotates on the crank shaft, the spring cannot be damaged by excessive rotation of the wind vane 10--the effect known as wind vane breakaway.

The instrument can be stored or shipped without draining the damping fluid 30. The fluid is retained in the instrument by drawing the circular plate 22 down to the stationary housing 28, thereby sealing the well 27. The plate 22 has three holes 37, Fig. 2, through which shipping screws such as shown in dashed lines at 38 in Fig. 1, can be inserted to engage threaded holes 39 in the housing 28. As the plate 22 moves down, the upper bearing 26 compresses spring 40. When the shipping screws 38 are subsequently removed to place the instrument in operation, the spring 40 returns the bearing 26 to its normal position and thereby lifts plate 22 and unseals the well 27.

NONSKID ROAD OR RUNWAY

F. Cecil Brenner

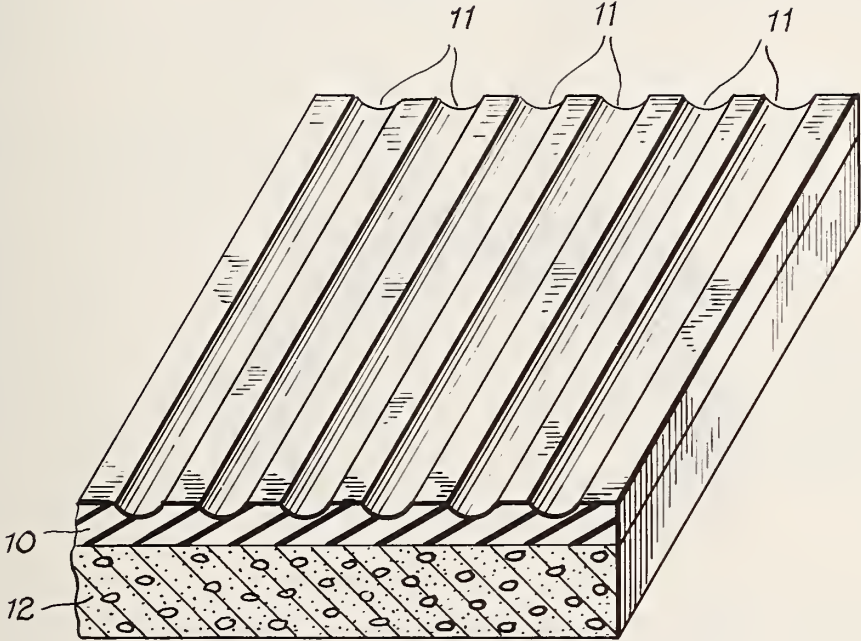
Grooves are presently cut into concrete or asphalt roads and airplane runways to prevent hydroplaning. The grooves however induce "chevron cuts" in the tires. In addition, groove-cutting resurfacing requires considerable time and requires closing down the runway or road for relatively long periods.

In the figure, a rubber mat 10 with parallel grooves 11 is bonded to a road or runway 12. The grooves are positioned perpendicular to the direction of movement of a vehicle on 12.

Mat 10 can absorb greater quantities of braking energy than concrete or asphalt, and grooves 11 provide rapid drainage of water to prevent hydroplaning and other forms of skidding during rainy periods. The mat may be removed and a new one installed rapidly with minimum delay in returning the runway or road to use.

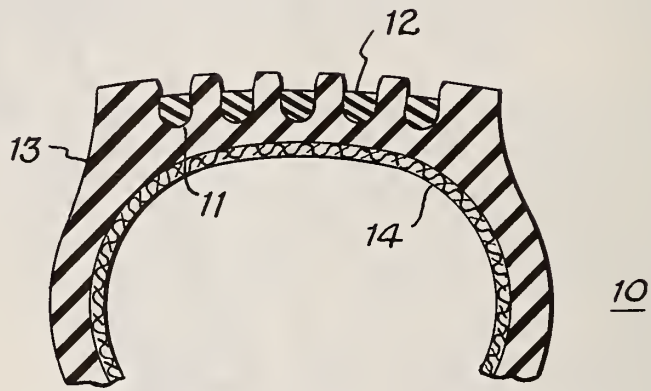
NONSKID ROAD OR RUNWAY

F. Cecil Brenner



REGROOVED PNEUMATIC TIRE WITH REMOVABLE INSERTS

F. Cecil Brenner



REGROOVED PNEUMATIC TIRE WITH REMOVABLE INSERTS

F. Cecil Brenner

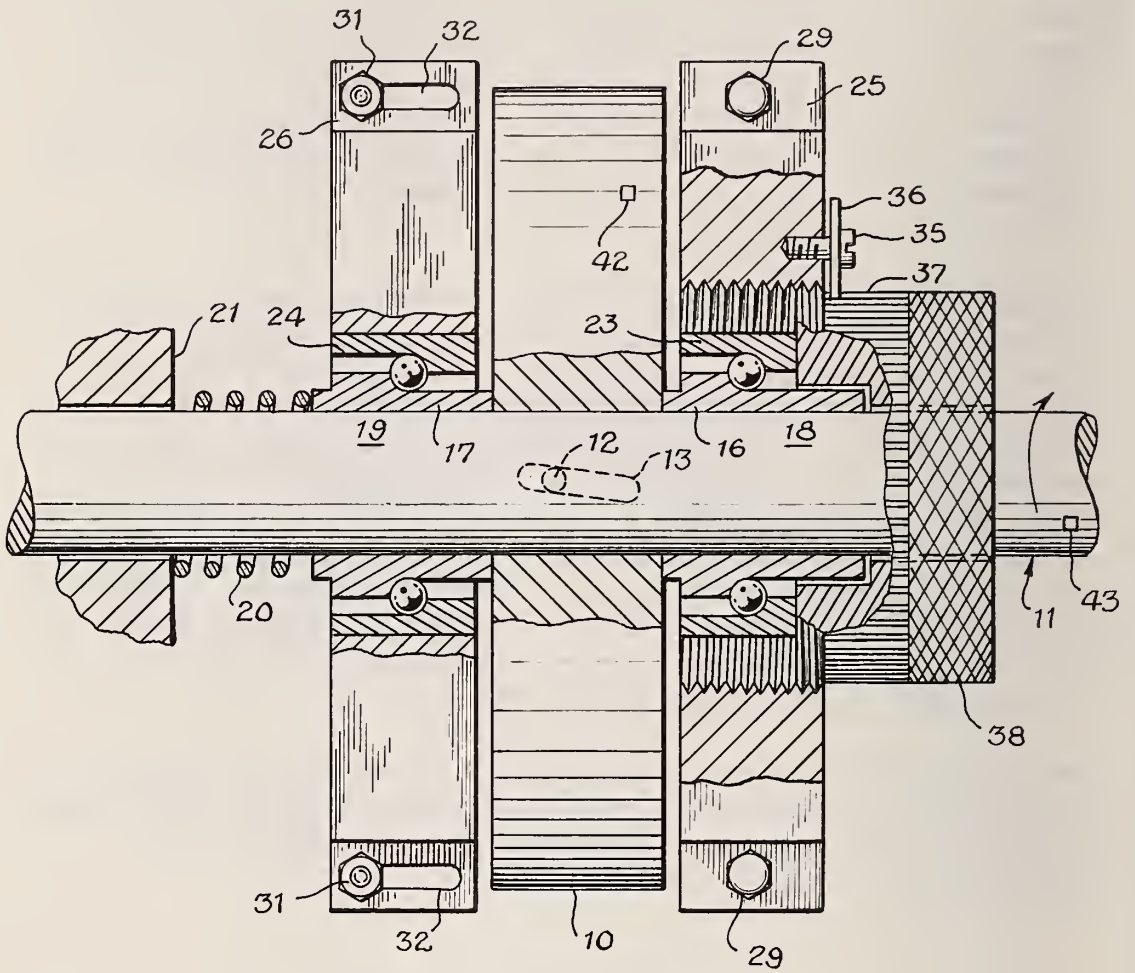
Taxi and bus tires are presently manufactured with an extra layer of rubber between the bottom of the molded groove and the fabric carcass. When the groove depth is worn to about $1/8$ of an inch, new grooves are cut into the tire with a hot knife. This process is costly in terms of time and labor. In addition, sometimes the regroover will cut too deeply and damage the fabric, destroying the carcass.

Normally a tire is molded with a $1/2$ -inch groove depth, with an additional $1/2$ inch between the bottom of the groove and the fabric carcass. In accordance with this note, tire 10 in the figure is constructed with the same amount of rubber but grooves 11 are molded to a full $7/8$ -inch depth. After the tire is removed from the mold an insert 12, approximately $1/2$ -inch thick, is placed in the bottom of each groove. The inserts may be glued to the main body 13 so that they will remain fixed in position. When the tire has been worn to where the thread depth is only $1/8$ inch, the insert may be removed, producing a new tire with a full-groove depth.

There are three advantages to this arrangement: the original tread design is retained, the cost of regrooving is greatly reduced, and there is no possibility of damage to the fabric carcass 14.

DEVICE FOR RADIALLY POSITIONING A ROTATING WHEEL

Delmar J. Collenberger



DEVICE FOR RADIALY POSITIONING A ROTATING WHEEL

Delmar J. Collenberger

This device may be used to vary the radial position of a wheel relative to the shaft on which it is mounted, while the wheel and shaft are in rotation.

Wheel 10 is slidably mounted on shaft 11, and pin 12 on the wheel is positioned in slot 13 located in the shaft. The inner races 16 and 17 of bearings 18 and 19, respectively, are slidably mounted on the shaft 11 with sufficient friction to rotate with 11. Inner race 17 is spring loaded with spring 20 and fixed member 21. The outer races 23 and 24 of the bearings are mounted in support brackets 25 and 26, respectively. Bracket 25 is fastened to a fixed member (not shown) with bolts 29, while bracket 26 is slidably mounted on the fixed member through bolts 31 and slots 32.

In a typical operation, the position of a reference mark 42 on wheel 10 is changed relative to a similar mark 43 on shaft 11 while the shaft and wheel are rotating. To accomplish this, screw 35 is loosened and pawl 36 now allows teeth 37 and knob 38 to rotate. Knob 38 is rotated clockwise so that 38 advances into bracket 25. The end of the knob, which is positioned against the end of outer race 23, moves bearing 18 and wheel 10 to the left in the figure. As the wheel and bearing slide to the left, bearing 19 moves in the same direction, compressing spring 20 an additional amount. Again, as wheel 10 slides longitudinally to the left on shaft 11, its pin 12 moves along slot 13, changing the radial position of mark 42 relative to mark 43.

METHOD FOR FABRICATING PRECISION WAVEGUIDE SECTIONS

Delmar J. Collenberger
George R. Gieseke
William J. Foote

The usual techniques for fabricating precision waveguide sections fail to achieve tolerances better than ± 0.0002 inch, which limits the degree of accuracy that can be attained in making microwave impedance measurements. The present technique provides waveguide sections with tolerances of ± 0.00005 inch. The sections are an integral part of some measurement systems in use at the National Bureau of Standards.

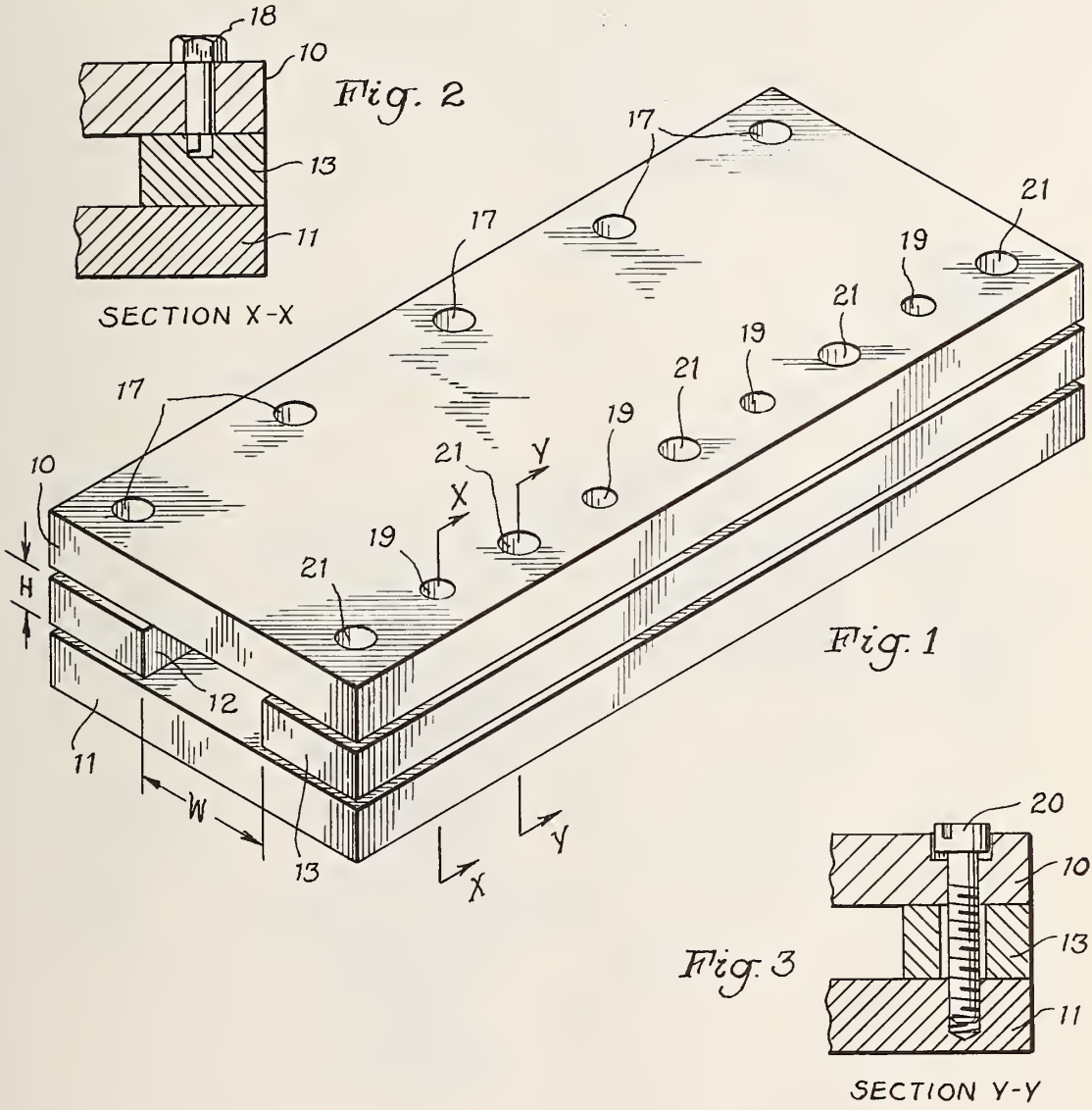
As an example, in fabricating a WR90 waveguide, bars 12 and 13 (Fig. 1) are used as gauge blocks and are milled to slightly less than 0.400 inch in the H dimension. The bars are silver plated to slightly more than 0.400 inch, ground to a roughness height of 5-6 microinches AA (arithmetical average), and lapped to as near 0.400 inch as possible. The maximum possible flatness is maintained of all surfaces which form the internal walls of the waveguide and care is exercised to maintain the squareness of bars 12 and 13. Bars 10 and 11 are ground and lapped on the surfaces that will form the internal walls of the waveguide. The waveguide is preferably made of Invar because of its very low thermal coefficient of expansion.

Clamping bolts (not shown) are positioned in holes 17 and securely tightened. The holes pass through bars 10, 12, and into bar 11. Eccentric shafts 18 are installed in holes 19, as shown in Fig. 2, and bolts 20 are positioned in holes 21 but are not tightened, as shown in Fig. 3.

At assembly, an appropriate airgauge spindle is inserted into the waveguide and the eccentric shafts 18 are rotated one at a time to move bar 13 toward or away from bar 12 as required to establish dimension W (0.900 inch.) After W is adjusted within very small tolerances clamping bolts 20 are securely tightened.

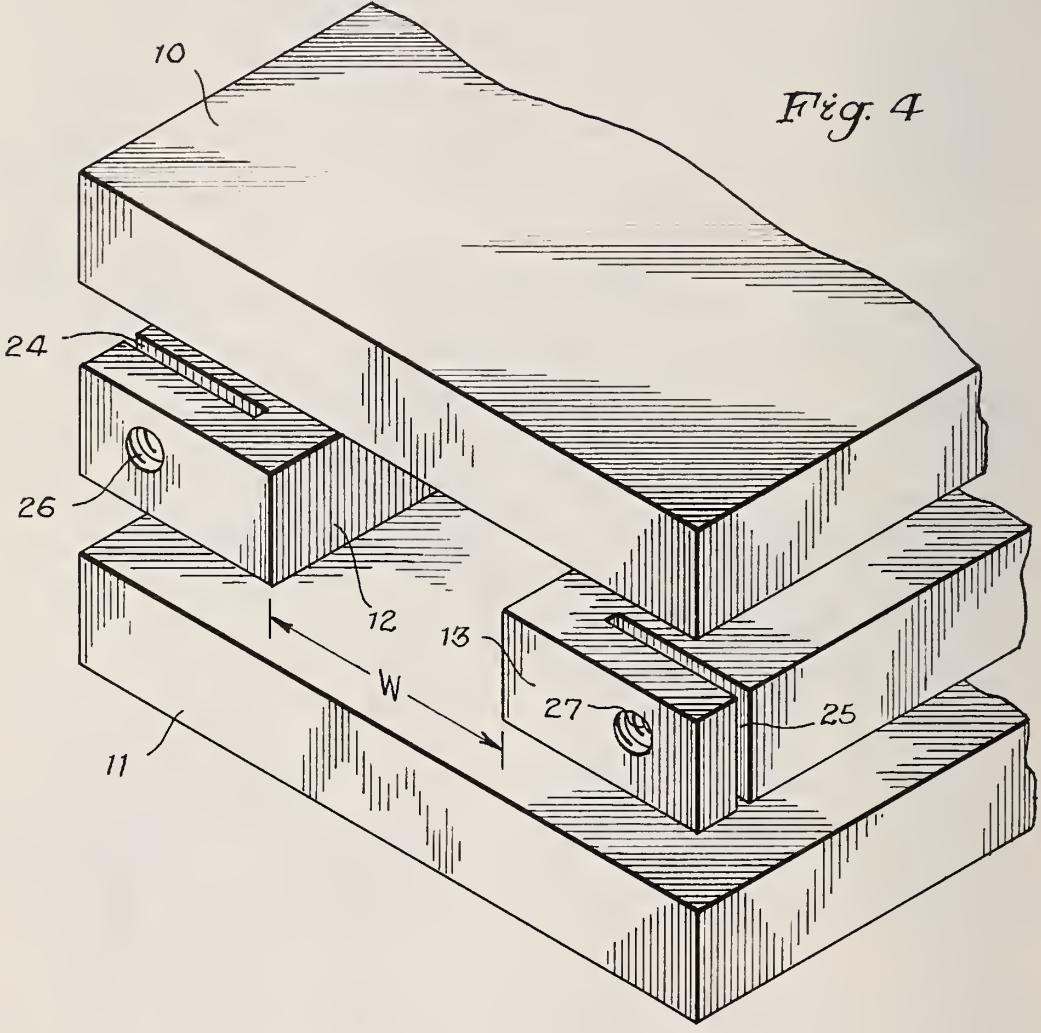
METHOD FOR FABRICATING PRECISION WAVEGUIDE SECTIONS

Delmar J. Collenberger
George R. Gieseke
William J. Foote



METHOD FOR FABRICATING PRECISION WAVEGUIDE SECTIONS

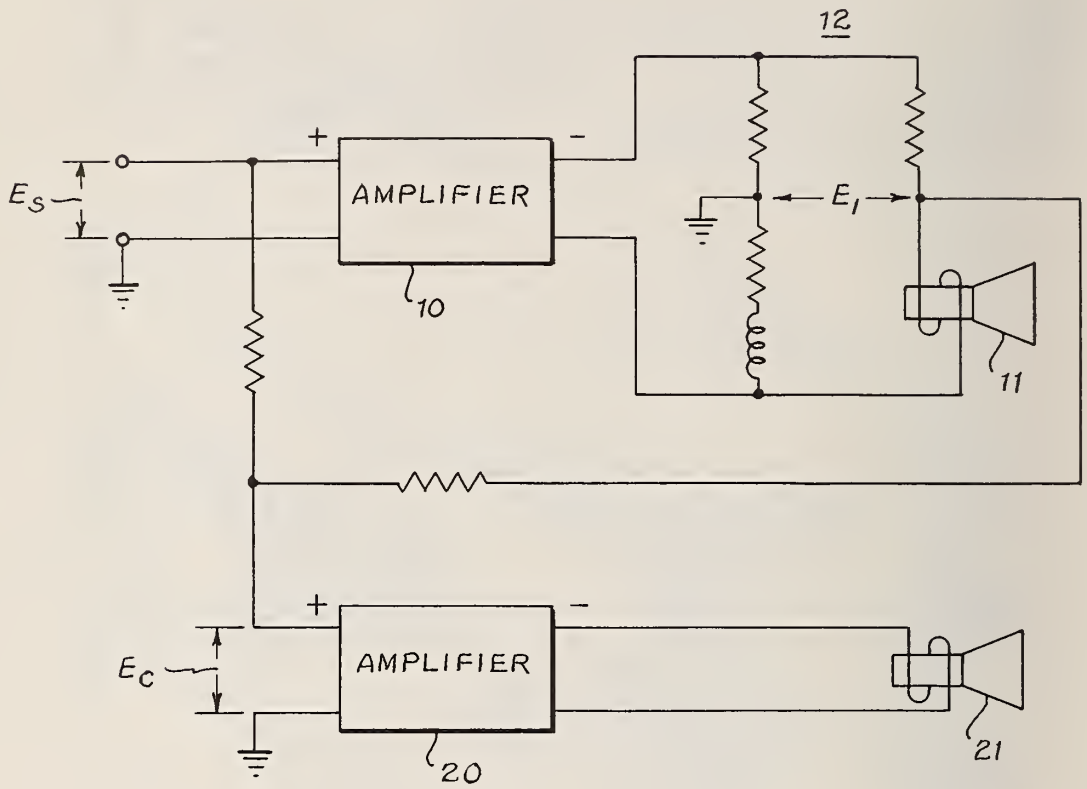
Delmar J. Collenberger
George R. Gieseke
William J. Foote



When necessary, small adjustments to correct for "bell mouthing" are accomplished as follows. With reference to Fig. 4, slots 24 and 25 are cut into bars 12 and 13, and holes 26 and 27 are drilled and tapped. Screws (not shown) are inserted in the holes until they press against the back walls of the related slots. When the screws are tightened the structurally weakened areas at the bottom of the slots act as hinges to reduce the magnitude of dimension W. Correction of dimension H is accomplished by permanently attaching a clamp across bars 10 and 11 at the end of the waveguide.

DISTORTION-CANCELLING LOUDSPEAKER SYSTEM

G. Franklin Montgomery



DISTORTION-CANCELLING LOUDSPEAKER SYSTEM

G. Franklin Montgomery

In the system described here, a loudspeaker is used to compensate for the nonlinear distortion in the sound reproduced in another loudspeaker.

When signal E_s is applied to the input of amplifier 10, the output of S_{10} drives electrodynamic loudspeaker 11. Signal E_1 is derived from a balanced bridge network 12 and is proportional to the voice coil velocity of loudspeaker 11. Signals E_s and E_1 are subtracted in the input of amplifier 20 to form a correction signal $E_c = E_s - kE_1$, which drives loudspeaker 21 through amplifier 20. The gain of amplifier 20 is made adjustable to permit compensating for any difference in acoustical efficiency between loudspeaker 21 and loudspeaker 11. The factor k is so chosen that for a small signal E_s the correction signal $E_c = 0$. Signal E_c then becomes nonzero only when E_s becomes so large that loudspeaker 11 begins to distort, and loudspeaker 21 produces an acoustic signal which cancels the distortion in the acoustic output of loudspeaker 11.

CRYOGENIC FLUID DENSITY MEASUREMENT SYSTEM

Wallace J. Alspach
Charles E. Miller

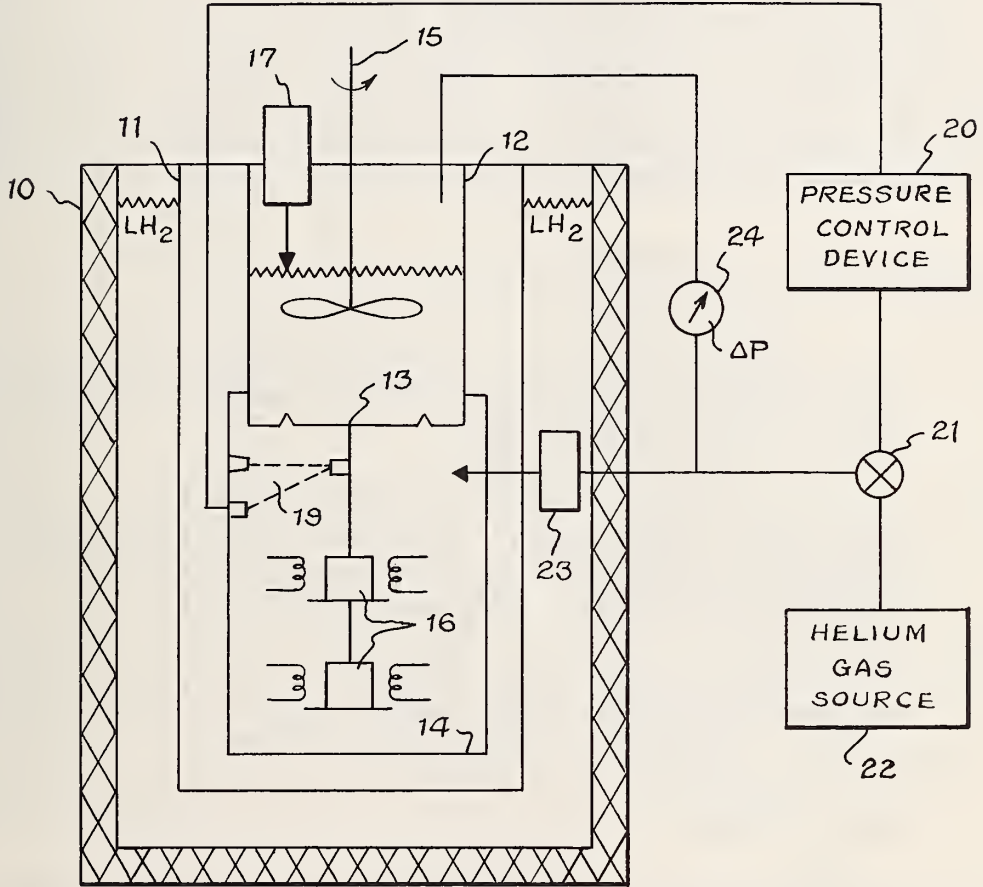
This system may be used to measure the density of cryogenic fluids including the liquid-solid mixtures often referred to as slush cryogens.

For example, in the case of slush hydrogen, liquid hydrogen is contained between the outer insulated tank 10 and the inner tank 11. Weigh tank 12, which includes a flexible bottom member 13, and container 14 are positioned in 11. The fluid in tank 12 is stirred by means of stirrer 15, and calibrated masses 16 are suspended from the flexible member.

The fluid, whose density is to be determined, is contained in tank 12 and its volume is determined with liquid sensor 17. The mass of the fluid, and the mass and pressure of the ullage gas over the fluid, exert a force on flexible member 13, causing it to be displaced from its no load or null position. The displacement is sensed, with masses 16 removed, by photoelectric displacement sensor 19. The output of the sensor is applied to pressure control device 20 which in turn operates valve 21 to allow helium gas to flow from source 22 through heat exchanger 23 to container 14. The gas establishes an opposing force against flexible member 13 in a direction opposite to the displacing force. The magnitude of the opposing force is automatically adjusted by the arrangement just described so that the flexible member is returned to its null position.

CRYOGENIC FLUID DENSITY MEASUREMENT SYSTEM

Wallace J. Alspach
Charles E. Miller



The total force on flexible member 13 is due to the mass of the fluid plus the mass of the ullage gas plus the pressure of the ullage gas. If the mass of the ullage gas is low by comparison to the mass of the fluid, as would be the case when the fluid occupies nearly all the volume of tank 12, then the force on the flexible member is due to the mass of the fluid plus the pressure of the ullage gas. The pressure of the ullage gas is eliminated by differential pressure sensor 24 which is connected on one side to the ullage gas pressure and on the other side to the helium gas pressure. Thus, the output of the sensor is directly related to the mass of the fluid, that is to say, the differential pressure is proportional to the mass of the fluid.

The differential pressure sensor 24 is calibrated as follows:

1. With no fluid contained in weigh tank 12, the pressures exerted on both sides of flexible member 13 are made equal.
2. One of the calibrated masses 16 is suspended from member 13, and the differential pressure necessary to position 13 at its null position is read on sensor 24 and noted.
3. Steps 1 and 2 are repeated with additional mass 16 suspended from member 13.
4. A plot of differential pressure against mass is made.

In a typical operation, the volume of the fluid in weigh tank 12 is determined with liquid sensor 17 and the mass with differential sensor 24. The density of the fluid is then calculated from the relationship $D = \frac{M}{V}$.

CONTROLLED-ATMOSPHERE WEATHERING DEVICE

William F. Brucksch, Jr.*

This device performs accelerated weathering tests on plastic films, elastomers, coatings, or fabrics. The samples are mounted in closed, controlled-atmosphere chambers that may be charged with photoactivators such as sulfur dioxide, ozone, or oxides of nitrogen. The chambers and an arc lamp are suspended in a refrigerated water bath, whereby the samples are maintained at nearly constant temperatures throughout exposure, and temperature differences between dark-pigmented and light-pigmented (or clear) samples are minimized.

As shown in Fig. 1, the refrigerated water bath consists of an insulated container 10, a cooling coil 12, a refrigeration unit 14 for circulating a refrigerant through the coil 12, and a stirrer 16 for stirring the water 18. A xenon or mercury arc lamp 20 and its leads 22 are enclosed in a glass tubular chamber 24 that is suspended in the center of the bath. Surrounding the lamp 20 are sample holders or chambers 26 containing the samples 28 to be tested. Each chamber 26 consists of a flattened glass tube 30, a gas inlet tube 32 for introducing a purge gas, and an elastomeric stopper 36 for admitting the photoactivator, through a needle syringe (not shown). The inlet and outlet tubes 32, 34 are connected to elastomeric tubes 38, 40, which are clamped after the purging operation and before the introduction of the photoactivator.

In some cases it may be desirable to replace the elastomeric tubes 38, 40 and their clamps with glass stopcocks, and to isolate the elastomeric stoppers 36 from the chambers 26 with glass stopcocks. The stopcocks should be lubricated with a fluorinated elastomer grease. The use of this glass apparatus gives more reproducible results.

As shown in Fig. 2, the thin, flat samples 28 are mounted near and parallel to the flattened walls of the glass tubes 30. The tubes 30, only two of which are shown in Fig. 1, are oriented so that the samples face the arc lamp 20.

The capacity of the refrigeration unit 14 should be equal to or slightly greater than the heat generated by the arc lamp 20. If the two are balanced the temperature of the bath will be constant. The refrigerated bath permits the temperature of the sample to be controlled during the test, whereby it is possible to differentiate between reactions caused by light and those caused by heat. The usual overheating of dark-pigmented stocks is minimized. Also, it is possible to mount the samples closer to the arc lamp and thereby shorten the exposure time.

* Former NBS Research Associate from
Manufacturing Chemists' Association, Inc.

CONTROLLED-ATMOSPHERE WEATHERING DEVICE

William F. Brucksch, Jr.

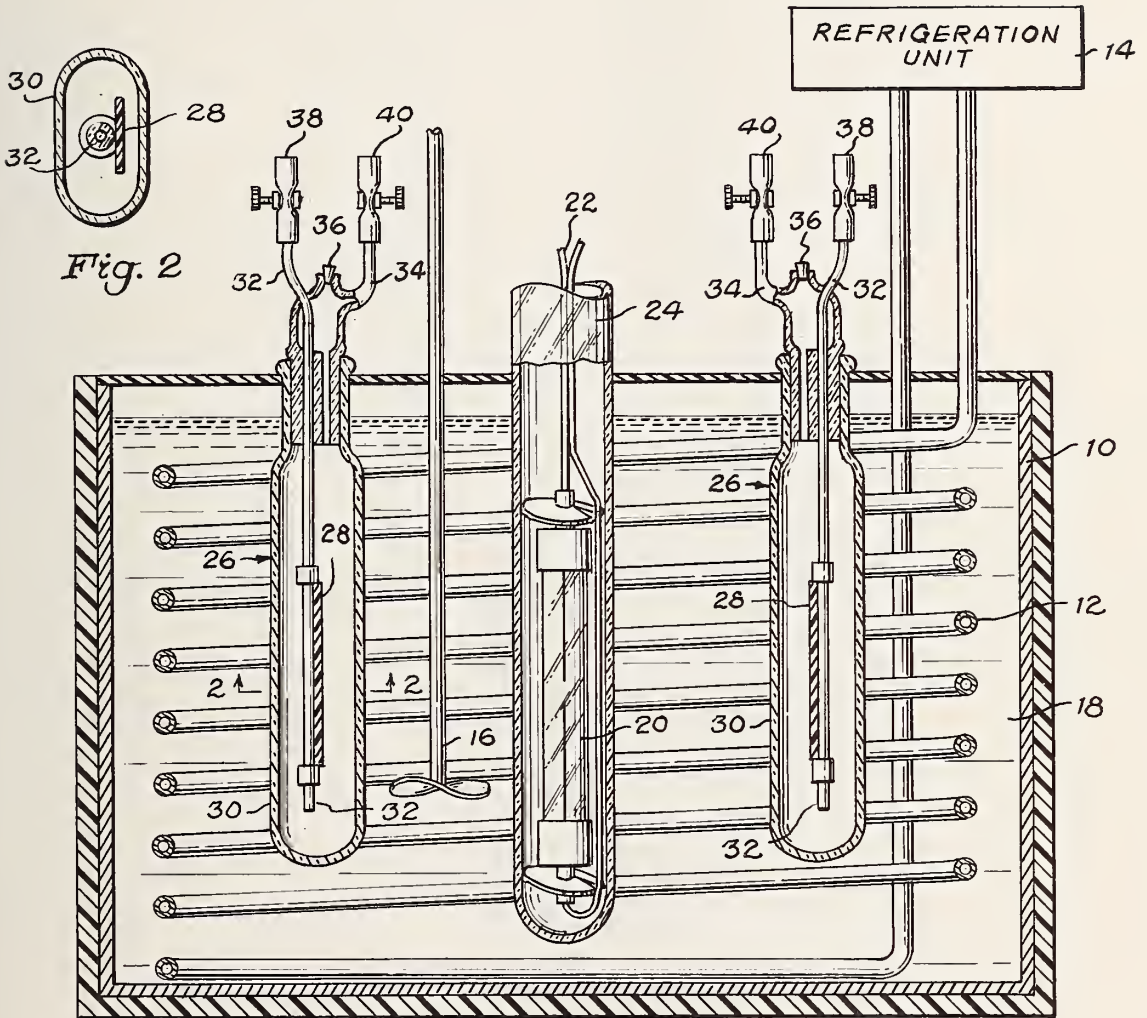


Fig. 1



NBS TECHNICAL PUBLICATIONS

PERIODICALS

JOURNAL OF RESEARCH reports National Bureau of Standards research and development in physics, mathematics, chemistry, and engineering. Comprehensive scientific papers give complete details of the work, including laboratory data, experimental procedures, and theoretical and mathematical analyses. Illustrated with photographs, drawings, and charts.

Published in three sections, available separately:

● Physics and Chemistry

Papers of interest primarily to scientists working in these fields. This section covers a broad range of physical and chemical research, with major emphasis on standards of physical measurement, fundamental constants, and properties of matter. Issued six times a year. Annual subscription: Domestic, \$9.50; foreign, \$11.75*.

● Mathematical Sciences

Studies and compilations designed mainly for the mathematician and theoretical physicist. Topics in mathematical statistics, theory of experiment design, numerical analysis, theoretical physics and chemistry, logical design and programming of computers and computer systems. Short numerical tables. Issued quarterly. Annual subscription: Domestic, \$5.00; foreign, \$6.25*.

● Engineering and Instrumentation

Reporting results of interest chiefly to the engineer and the applied scientist. This section includes many of the new developments in instrumentation resulting from the Bureau's work in physical measurement, data processing, and development of test methods. It will also cover some of the work in acoustics, applied mechanics, building research, and cryogenic engineering. Issued quarterly. Annual subscription: Domestic, \$5.00; foreign, \$6.25*.

TECHNICAL NEWS BULLETIN

The best single source of information concerning the Bureau's research, developmental, cooperative and publication activities, this monthly publication is designed for the industry-oriented individual whose daily work involves intimate contact with science and technology—for *engineers, chemists, physicists, research managers, product-development managers, and company executives*. Annual subscription: Domestic, \$3.00; foreign, \$4.00*.

* Difference in price is due to extra cost of foreign mailing.

Order NBS publications from:

Superintendent of Documents
Government Printing Office
Washington, D.C. 20402

NONPERIODICALS

Applied Mathematics Series. Mathematical tables, manuals, and studies.

Building Science Series. Research results, test methods, and performance criteria of building materials, components, systems, and structures.

Handbooks. Recommended codes of engineering and industrial practice (including safety codes) developed in cooperation with interested industries, professional organizations, and regulatory bodies.

Special Publications. Proceedings of NBS conferences, bibliographies, annual reports, wall charts, pamphlets, etc.

Monographs. Major contributions to the technical literature on various subjects related to the Bureau's scientific and technical activities.

National Standard Reference Data Series. NSRDS provides quantitative data on the physical and chemical properties of materials, compiled from the world's literature and critically evaluated.

Product Standards. Provide requirements for sizes, types, quality and methods for testing various industrial products. These standards are developed cooperatively with interested Government and industry groups and provide the basis for common understanding of product characteristics for both buyers and sellers. Their use is voluntary.

Technical Notes. This series consists of communications and reports (covering both other agency and NBS-sponsored work) of limited or transitory interest.

Federal Information Processing Standards Publications. This series is the official publication within the Federal Government for information on standards adopted and promulgated under the Public Law 89-306, and Bureau of the Budget Circular A-86 entitled, Standardization of Data Elements and Codes in Data Systems.

CLEARINGHOUSE

The Clearinghouse for Federal Scientific and Technical Information, operated by NBS, supplies unclassified information related to Government-generated science and technology in defense, space, atomic energy, and other national programs. For further information on Clearinghouse services, write:

Clearinghouse
U.S. Department of Commerce
Springfield, Virginia 22151

U.S. DEPARTMENT OF COMMERCE
WASHINGTON, D.C. 20230

OFFICIAL BUSINESS



POSTAGE AND FEES PAID
U.S. DEPARTMENT OF COMMERCE
