

REFERENCE  
NBS



A11105 969110

BUREAU OF

# NBS SPECIAL PUBLICATION 413

U.S. DEPARTMENT OF COMMERCE/ National Bureau of Standards



## SPECIAL TECHNICAL FACILITIES at the National Bureau of Standards

QC  
100  
457  
No. 413  
1975

## NATIONAL BUREAU OF STANDARDS

The National Bureau of Standards<sup>1</sup> was established by an act of Congress March 3, 1901. The Bureau's overall goal is to strengthen and advance the Nation's science and technology and facilitate their effective application for public benefit. To this end, the Bureau conducts research and provides: (1) a basis for the Nation's physical measurement system, (2) scientific and technological services for industry and government, (3) a technical basis for equity in trade, and (4) technical services to promote public safety. The Bureau consists of the Institute for Basic Standards, the Institute for Materials Research, the Institute for Applied Technology, the Institute for Computer Sciences and Technology, and the Office for Information Programs.

**THE INSTITUTE FOR BASIC STANDARDS** provides the central basis within the United States of a complete and consistent system of physical measurement; coordinates that system with measurement systems of other nations; and furnishes essential services leading to accurate and uniform physical measurements throughout the Nation's scientific community, industry, and commerce. The Institute consists of a Center for Radiation Research, an Office of Measurement Services and the following divisions:

Applied Mathematics — Electricity — Mechanics — Heat — Optical Physics — Nuclear Sciences<sup>2</sup> — Applied Radiation<sup>2</sup> — Quantum Electronics<sup>3</sup> — Electromagnetics<sup>3</sup> — Time and Frequency<sup>3</sup> — Laboratory Astrophysics<sup>3</sup> — Cryogenics<sup>3</sup>.

**THE INSTITUTE FOR MATERIALS RESEARCH** conducts materials research leading to improved methods of measurement, standards, and data on the properties of well-characterized materials needed by industry, commerce, educational institutions, and Government; provides advisory and research services to other Government agencies; and develops, produces, and distributes standard reference materials. The Institute consists of the Office of Standard Reference Materials and the following divisions:

Analytical Chemistry — Polymers — Metallurgy — Inorganic Materials — Reactor Radiation — Physical Chemistry.

**THE INSTITUTE FOR APPLIED TECHNOLOGY** provides technical services to promote the use of available technology and to facilitate technological innovation in industry and Government; cooperates with public and private organizations leading to the development of technological standards (including mandatory safety standards), codes and methods of test; and provides technical advice and services to Government agencies upon request. The Institute consists of a Center for Building Technology and the following divisions and offices:

Engineering and Product Standards — Weights and Measures — Invention and Innovation — Measurement Engineering — Structures, Materials, and Life Safety<sup>4</sup> — Building Environment<sup>4</sup> — Technical Evaluation and Application<sup>4</sup> — Fire Technology — Product Evaluation Technology.

**THE INSTITUTE FOR COMPUTER SCIENCES AND TECHNOLOGY** conducts research and provides technical services designed to aid Government agencies in improving cost effectiveness in the conduct of their programs through the selection, acquisition, and effective utilization of automatic data processing equipment; and serves as the principal focus within the executive branch for the development of Federal standards for automatic data processing equipment, techniques, and computer languages. The Institute consists of the following divisions:

Computer Services — Systems and Software — Computer Systems Engineering — Information Technology.

**THE OFFICE FOR INFORMATION PROGRAMS** promotes optimum dissemination and accessibility of scientific information generated within NBS and other agencies of the Federal Government; promotes the development of the National Standard Reference Data System and a system of information analysis centers dealing with the broader aspects of the National Measurement System; provides appropriate services to ensure that the NBS staff has optimum accessibility to the scientific information of the world. The Office consists of the following organizational units:

Office of Standard Reference Data — Office of Information Activities — Office of Technical Publications — Library — Office of International Relations.

<sup>1</sup> Headquarters and Laboratories at Gaithersburg, Maryland. Unless otherwise noted: mailing address Washington, D.C. 20234.

<sup>2</sup> Part of the Center for Radiation Research.

<sup>3</sup> Located at Boulder, Colorado 80302.

<sup>4</sup> Part of the Center for Building Technology.

# Special Technical Facilities at the National Bureau of Standards

---

H. L. Mason and Iris M. Lloyd  
*Editors*

<sup>t</sup> Special publication no. 413



---

**U.S. DEPARTMENT OF COMMERCE, Frederick B. Dent, Secretary**  
**NATIONAL BUREAU OF STANDARDS, Richard W. Roberts, Director**

Issued January, 1975

**National Bureau of Standards Special Publication 413**

Nat. Bur. Stand. (U.S.), Spec Publ. 413, 50 pages  
(Jan. 1975)

**U.S. GOVERNMENT PRINTING OFFICE**  
WASHINGTON; 1975

---

For sale by the Superintendent of Documents, U.S. Government Printing Office, Washington, D.C. 20402  
(Order by SD Catalog No. C13. 11:413/ ) Price \$1.10

# FOREWORD

The National Bureau of Standards is one of the world's great physical science laboratories. In many cases our equipment and facilities are unique national resources, ready to play a vital role in solving urgent problems of the day. For example, our high flux nuclear reactor is one of the major research reactors in the nation, and is used daily in projects ranging from abstract nuclear theory to analysis of food contaminants. But equipment cannot be used unless its existence and capabilities are known, so we have prepared this catalog to inform scientists—both at NBS and at other institutions—as to what is available at NBS for cooperative use.



Richard W. Roberts  
*Director*

---

## On the cover . . .

Close-up view of a simulated experimental arrangement for laser excitation of a gas in the High Temperature Vaporization Laboratory. A laser beam is shown crossing a stream of gas directed at the sampling cone of a mass spectrometer. The bright spot visible at the intersection of the laser beam and the gas stream represents the region of initial excitation.

# TABLE OF CONTENTS

|  | Page |   | Page |
|--|------|---|------|
| INTRODUCTION   | 1    | Electro-optical High Voltage Field Mapping Systems      | 13   |
| ACCELERATORS   |      | Non-Magnetic Facility                                   | 13   |
| Electron Van de Graaff Accelerator                   | 2    | Reactance Bridge for Power Loss Measurement             | 14   |
| Linear Electron Accelerator                          | 2    | ELECTRON MICROSCOPES                                    |      |
| Positive-Ion Van de Graaff Accelerator               | 3    | Scanning Electron Microscope                            | 15   |
| Synchrotron Ultraviolet Radiation Facility           | 3    | Transmission Electron Microscope                        | 15   |
| ACOUSTIC FACILITIES                                  |      | ENVIRONMENTAL FACILITIES                                |      |
| Acoustic Anechoic Chamber                            | 4    | Precision Humidity Measurement                          | 16   |
| Acoustic Reverberation Chamber                       | 4    | Sulfur Dioxide Pollution Monitor                        | 16   |
| ANTENNAS   |      | FIRE RESEARCH   |      |
| Antenna Anechoic Chamber                             | 5    | Fire Research Laboratory                                | 17   |
| Antenna Field Strength Facilities                    | 5    | HIGH PRESSURE FACILITIES                                |      |
| Rooftop Antenna Range                                | 6    | High Pressure Generators                                | 18   |
| BUILDING RESEARCH FACILITIES                         |      | High Pressure Optical Fluorescence System               | 18   |
| Accelerated Weathering Facility                      | 6    | High Pressure PVT Dilatometer                           | 19   |
| Plumbing Research Laboratory                         | 7    | HIGH TEMPERATURE FACILITIES                             |      |
| Structures Laboratory                                | 7    | Alloy Preparation Laboratory                            | 19   |
| Thermal Engineering Laboratories                     | 8    | High Temperature Controlled-Atmosphere Furnace          | 20   |
| CALORIMETERS   |      | High Temperature Vaporization Laboratory                | 20   |
| Fluorine Combustion Calorimeter                      | 9    | Inorganic Glasses Laboratory                            | 21   |
| Low-Temperature Adiabatic Calorimeter                | 9    | Laser Materials Facility                                | 21   |
| Microcalorimetry                                     | 10   | Millisecond High Temperature Thermophysical Measurement | 22   |
| Platinum-lined Adiabatic Solution Calorimeter        | 10   | LOW PRESSURE FACILITY                                   |      |
| Rotating, Platinum-lined, Adiabatic Bomb Calorimeter | 11   | Mercury Manometer                                       | 22   |
| COMPUTER   |      | LOW TEMPERATURE FACILITIES                              |      |
| Central Computer Facility                            | 11   | Acoustical Thermometer                                  | 23   |
| ELECTRICAL MEASUREMENTS FACILITIES                   |      |   |      |
| Automatic Network Analyzer                           | 12   |   |      |

|  | Page |   | Page |
|--|------|---|------|
| Cryogenic Flow Research Facility .....         | 23   | Concave Grating Spectrographs .....             | 35   |
| Hydrogen Liquefaction Facility .....           | 24   | Czerny-Turner High-Dispersion Spectrograph ..   | 35   |
| Liquefied Natural Gas Flow Facility .....      | 24   | Electron Energy Loss Spectrometers for Gases .. | 36   |
| Nuclear Orientation Cryostat .....             | 24   | Far Infrared Spectroscopy .....                 | 36   |
|  |      | Flame Emission Spectrometer with Repetitive     |      |
| MACHINE TOOLS, NUMERICALLY CONTROLLED          |      | Optical Scanning .....                          | 36   |
| Machine Tools, Numerically Controlled .....    | 25   | Flash Photolysis Resonance Fluorescence         |      |
|  |      | Apparatus .....                                 | 37   |
| MECHANICAL MEASUREMENT FACILITIES              |      | Fourier Transform Nuclear Magnetic              |      |
| Deadweight Force Calibration Machines .....    | 25   | Resonance Spectrometer .....                    | 37   |
| Fluid Flow Measurement .....                   | 26   | Gas Chromatograph-Mass Spectrometer System .    | 38   |
| Three-Dimensional Precision Measurement ....   | 27   | High Pressure Photoionization Mass              |      |
| Universal Testing Machine, Twelve Million      |      | Spectrometer .....                              | 38   |
| Pound-Force .....                              | 27   | High Resolution Infrared Spectrometer .....     | 39   |
| Wind Tunnel for Unsteady Flow .....            | 28   | Isotope Ratio Mass Spectrometers .....          | 39   |
|  |      | Microwave Spectroscopy Facility .....           | 39   |
| NUCLEAR REACTOR AND ASSOCIATED                 |      | Mössbauer Spectroscopy of Metals .....          | 40   |
| FACILITIES                                     |      | Multichannel Flame Spectrometer .....           | 40   |
| Nuclear Reactor .....                          | 28   | Nuclear Magnetic Resonance Spectroscopy ....    | 41   |
| Filtered Neutron Beams .....                   | 29   | Photoionization Spectrometry .....              | 41   |
| Intermediate-Energy Standard Neutron Field ... | 29   | Raman Spectroscopy .....                        | 42   |
| Isotope Separator Laboratory .....             | 29   |   |      |
| Monoenergetic Neutron Beam Facilities .....    | 30   | SURFACE PROPERTIES FACILITIES                   |      |
| Neutron Diffractometers .....                  | 30   | Electron Probe Microanalyzer .....              | 43   |
| Neutron Radiography Facility .....             | 31   | Ion Probe Microanalyzer .....                   | 43   |
| Neutron Scattering Spectrometer .....          | 31   | Molecular Beam-Field Emission Microscope ....   | 44   |
| Nuclear Irradiation Facilities .....           | 32   | Molecular Beam Machine .....                    | 44   |
| Time-of-Flight Neutron Spectrometers .....     | 32   | Surface Area Analyzer .....                     | 45   |
|  |      | Surface Ionization Analyzer .....               | 45   |
| RADIOACTIVE SOURCE                             |      |   |      |
| Cobalt-60 Irradiation Facility .....           | 33   | X-RAY FACILITIES                                |      |
|  |      | Rotating Anode X-Ray Diffraction Unit .....     | 46   |
| RADIO STATIONS                                 |      | Soft X-Ray Spectrometer .....                   | 46   |
| WWVL VLF Broadcast Station .....               | 33   | Three-Circle X-Ray Diffractometer .....         | 47   |
| Special Announcements on WWV/WWVH .....        | 34   |   |      |
| SPECTROSCOPY FACILITIES                        |      | INDEX .....                                     | 49   |
| Analytical Spectrophometer .....               | 34   |   |      |



# INTRODUCTION

Among the major technical facilities of the NBS laboratories in Gaithersburg, Md., and Boulder, Colo. are some which are unique and many which feature equipment that is relatively uncommon. These important resources deserve to be more widely known and used by the scientific and engineering community, including the Bureau's own staff, other Government agencies, industrial research associates, academic researchers, and postdoctoral fellows. However, it should be noted that the Bureau cannot accept work for these facilities which is more appropriately done by other organizations in or outside of the Federal Government.

Those facilities which are available for shared use, either occasional or extended, are briefly described in the pages of this publication. For each is indicated its technical capabilities, its potential applications, and whom to contact in making arrangements. Literature references which give more detailed information as to the structure and usefulness of these facilities are included for many of the units described. While there will be no charge made for use of the facility by NBS workers on RTS-funded projects, all activities funded from outside NBS will be required to pay costs intended to recover operating expenses. The staff will be glad to discuss with interested individuals a specific research or testing problem for which the equipment appears appropriate. Long term projects require a written agreement which specifies the extent of the participation of the staff responsible for

the facility, the allocation of costs, and the provisions for publication of research results.

NBS capabilities related to scientific and technical equipment include also:

Calibration to U.S. national standards—contact J. M. Cameron, Chief of the Office of Measurement Services, Physics Building, Room A345, Phone 301/921-2805.

Provision of well-characterized substances—contact J. P. Cali, Chief of the Office of Standard Reference Materials, Chemistry Building, Room B306, Phone 301/921-3479.

Information on evaluated data for physical properties—contact Dr. D. R. Lide, Jr., Chief of the Office of Standard Reference Data, Administration Building, Room A537, Phone 301/921-2467.

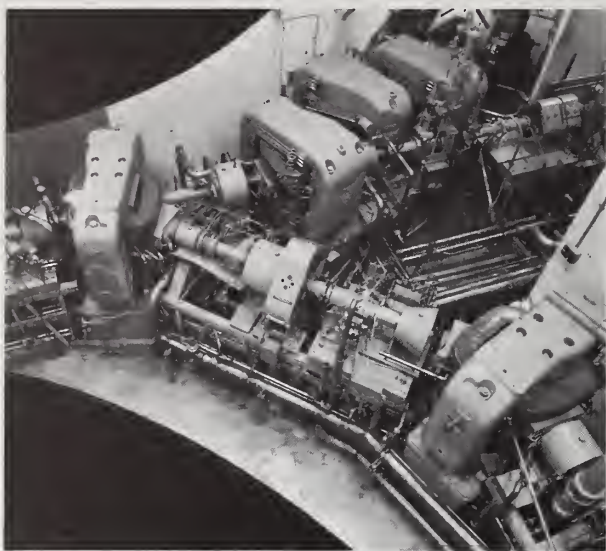
Information on U.S. and foreign documents on voluntary engineering standards—contact W. J. Slattery, Standards Information Services, Technology Building, Room B159, Phone 301/921-2587.

Information on automatic data processing equipment and standards—contact Miss M. R. Fox, Chief of Computer Information, Technology Building, Room B246, Phone 301/921-3517.

Visitors will find the Gaithersburg laboratories 20 miles northwest of Washington, D.C. (mail address, National Bureau of Standards, Washington, D.C. 20234) and the Boulder laboratories 25 miles northwest of Denver, Colorado (mail address, National Bureau of Standards, Boulder, Colo. 80302).

*Micrograph made with the TRANSMISSION ELECTRON MICROSCOPE of the region surrounding a 200 gram Vickers microhardness indentation in sapphire ( $\alpha$ - $\text{Al}_2\text{O}_3$ ). The instrument is being used to study plastic deformation and the structure of cracks (at C) in hard brittle materials.*

# ACCELERATORS



LINEAR ELECTRON ACCELERATOR. Linac beam handling system.

## ELECTRON VAN DE GRAEFF ACCELERATOR, 4 MeV

This accelerator, based on the principle of the Van de Graaff electrostatic generator, produces both continuous and pulsed beams of electrons with good energy resolution and continuous control of beam current and energy. Its capabilities make possible a wide variety of experiments using electrons or photons.

### Capability:

ENERGY: continuously variable 0.8 to 4.0 MeV.  
ENERGY SPREAD: 0.2 percent.  
OUTPUT CURRENT:  $10^{-9}$  to  $10^{-3}$  ampere dc.  
500 microamperes peak current pulsed.  
PULSE LENGTH: 1 microsecond.  
REPETITION RATE: 50 to 500 pps or single shot.  
EXPERIMENTAL ROOMS: two, well shielded, total area 200 m<sup>2</sup>.

**Applications:** Interactions of electrons and photons with matter; dosimetry measurements; isomer activation; electron channeling in solids; bremsstrahlung production studies; characteristic radiation production; nuclear activation; photofission experiments; radiation simulation measurements; radiation damage and failure studies.

**Availability:** Beam time is available to NBS staff, other

agency and university users, industrial users, and guest workers. Operation only by qualified X-Ray Physics Section staff, under Dr. Charles E. Dick.

**Literature:** NBS Technical News Bulletin, August 1962, Vol. 46, No. 8, pages 107-110.

**Contact:** Dr. J. W. Motz, Chief of Applied Radiation Division, Radiation Physics Building, Room C216, Phone 301-921-2201.

## LINEAR ELECTRON ACCELERATOR (LINAC)

The linear accelerator (linac) facility was designed for maximum flexibility, beam quality, and beam handling to satisfy the needs of a large variety of programs. It is a high-intensity source of electron, photon, and neutron beams with excellent stability and definition.

### Capability:

ENERGY: continuously variable 10 to 150 MeV.  
POWER: 80 kilowatts, average.  
CURRENT: 0.8 milliamperes, average  
3.5 amperes, peak (short pulse operation).  
REPETITION RATE: variable to 720 pps.  
PULSE LENGTH: 0.001 to 6 microseconds.  
ENERGY SPREAD: from linac, 2 percent full width at half maximum; from beam handling system, 0.04 percent full width at half maximum.  
EXPERIMENTAL ROOMS: three, with personnel access to one while beam is directed into another.  
An on-line data handling system is available, and data reduction programs are available.

**Applications:** Neutron total cross section measurements by time of flight (above-ground facility); neutron fission yields; neutron flux standards; neutron capture cross sections; fast neutron activation analysis; electron and photon dosimetry; pulsed radiolysis of biochemical systems; electron scattering; electrodisintegration of light nuclei; photonuclear physics with monoenergetic and polarized photons; photon activation analysis; dosimetry and dose distribution using radiochromic dyes; electron and photon beam measurement standards; production of radioactive sources.

**Availability:** Beam time is available to NBS staff, other agency and university users, industrial users, and guest workers. Operation only by qualified Linac Operations Section staff under J. E. Rose.

**Literature:** NBS Technical News Bulletin, August 1962,

**Contact:** Dr. C. D. Bowman, Chief of Nuclear Sciences  
Division, Radiation Physics Building, Room B119,  
Phone 301-921-2234.

## POSITIVE-ION VAN DE GRAAFF ACCELERATOR, 3 MeV

The positive-ion 3 MeV Van de Graaff facility at the National Bureau of Standards has been designed primarily for experiments involving keV and MeV energy neutrons. It includes a HVEC model KN-3000 Van de Graaff accelerator and two target rooms. The accelerator is capable of operation in dc mode as well as in a variety of pulsed beam modes. Momentum analyzed beams can be supplied to any of six ports in a low scattering environment or to a single port in a heavily shielded room. Protons and deuterons are the ion species routinely accelerated.

**Capability:** Values listed are routinely available. Extended capabilities may be developed for special applications.

ENERGY: 0.8 to 3.0 MeV.

BEAM INTENSITY: 1 to 200  $\mu$ A.

### Analyzed Beam:

ENERGY: protons—0.8 to 3.0 MeV; deuterons—0.8 to 2.8 MeV.

BEAM INTENSITY: 0.3 to 20.9  $\mu$ A.

ENERGY STABILITY: 2.0 keV.

ENERGY REPRODUCIBILITY: 5.0 keV.

### Pulsating Capability:

Rf PULSING: 1.0 and 3.3 MHz repetition rates with 15 and 4 ns burst width respectively.  
"Slow" pulsing: Burst width—variable from 0.1 to 5.0  $\mu$ s; Rep. rate—variable from 100 kHz to dc.

An on-line data handling capability is being developed based on a D.C. 6024/5 computer.

**Applications:** Standard neutron cross section measurements, neutron flux standards, neutron experiments involving time of flight, neutron capture cross section measurement, fast neutron activation analysis, neutron dosimetry, radiation damage studies, charged particle studies.

**Availability:** Accelerator time is available to NBS staff and outside users to the extent that the work does not conflict with the neutron standards program. The use of a member of the Van de Graaff staff is recommended for operation of the machine and set-up.

**Contact:** Dr. A. D. Carlson, Neutron Standards Section, Radiation Physics Building, Room B119, Phone 301-921-2677.

## SYNCHROTRON ULTRAVIOLET RADIATION FACILITY (SURF)

Synchrotron radiation in the far ultraviolet is highly collimated, nearly linearly polarized, and of calculable intensity. It is well-suited for studies in atomic, molecular, biomolecular and solid-state physics, chemistry, engineering and medicine.

**Capability:** The NBS Synchrotron Ultraviolet Radiation Facility (SURF) is now in the process of being converted into a storage ring. Initial injection has been achieved and full operation is expected by the end of 1974. With a microtron injector the storage ring is expected to accelerate a 50 mA beam to a maximum energy of 240 MeV. The expected intensity in the region 600 Å to 1200 Å is  $4 \times 10^{11}$  photons per second per milliradian of orbit for an instrumental resolution of  $\Delta\lambda/\lambda = 0.001$ . Instrumentation planned and existing includes:

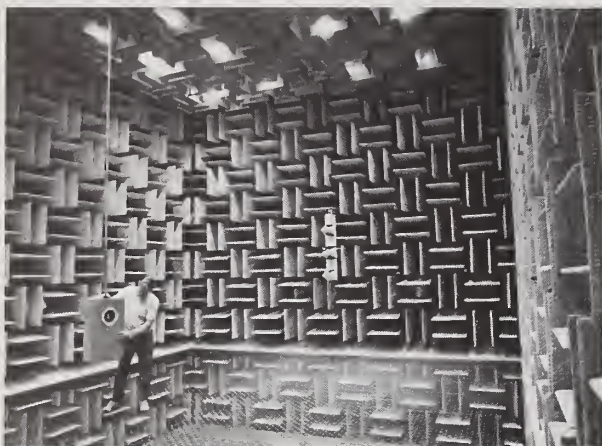
- a) A source of smooth, calculable intensity distribution, 10,000 Å to 40 Å.
- b) 600 Å — 40 Å 3-m grazing incidence spectrograph and monochromator, resolution to 0.05 Å.
- c) Two 2000 Å — 60 Å monochromators (toroidal grating), resolution 0.5 Å to 1.0 Å.
- d) 925 Å — 40 Å 2.2-m grazing incidence monochromator, resolution to 0.1 Å, with  $10^{-10}$  torr vacuum chamber, photoelectron analyzer, and manipulators.
- e) Medium temperature heat-pipe ovens, 0.3m and 1.0m, to 1100 C. One oven of the rotating type handles materials that wet a wick with difficulty.
- f) Calibrated detectors, 2000 Å — 200 Å.
- g) Two spectrometer calibration lines with a direct view of the beam.

**Applications:** The enlarged SURF will be used for atomic and molecular absorption spectroscopy, optical properties of materials, electron density of states in solids, surface studies (including angular distribution of photoelectrons as a function of angle of incidence and polarization vector), radiation damage studies in substances (including those of biological origin), calibration studies, precision photoabsorption cross-section measurements in solids and vapors, and photoelectron spectroscopy of gases.

**Availability:** To any qualified research worker from NBS or other Federal agencies.

**Contact:** Dr. Robert P. Madden, Chief, Far UV Physics Section, Physics Building, Room A251, Phone 301-921-2031.

# ACOUSTIC FACILITIES



ACOUSTIC ANECHOIC CHAMBER, completely lined with sound absorbing wedges.

## ACOUSTIC ANECHOIC CHAMBER

This facility consists of a sound and vibration-isolated room whose inner surfaces are lined with 1.78-meter long glass-wool wedges and whose free-field dimensions are about  $10 \times 6.7 \times 6.7$  meters. Access to the room is by means of a steel wire mesh floor supported by concealed I-beams. Instrument hangers, each capable of supporting about 100 kilograms, are mounted on all six surfaces of the room. The space is lighted, air conditioned and provided with electrical outlets and conduits for communications cables.

**Capability:** The room provides good free-field sound conditions from about 40 Hz to at least 63 kHz. Upper bounds for wide-band ambient noise are about 30 dB re  $20 \mu\text{N/m}^2$  for C-weighting and 23 dB for A-weighting. (The actual ambient level cannot be measured with a commercial sound level meter since equivalent instrument noise exceeds the ambient acoustic noise.)

**Applications:** Microphone calibration, loudspeaker measurements, sound level meter calibration, noise measurement, psychoacoustic experiments, radiation and scattering experiments, general use when a quiet environment is needed.

**Availability:** When not otherwise in use and when staff members are available to ready the facility for the user.

**Literature:** J. Acoust. Soc. Amer., Vol. 52, No. 4 (Part 1), Oct. 1972, pp. 1071—1076.

**Contact:** Walter Koidan, Sound Bldg., Room B140, Phone 301-921-3607.

## ACOUSTIC REVERBERATION CHAMBER

The chamber is a vibration-isolated, shell-within-shell type structure of massive reinforced concrete construction with inside dimensions of  $9.14 \times 7.62 \times 6.10$  meters. A steel plate, double-leaf entrance door provides a clear opening to the chamber of approximately  $2 \times 3$  meters. The chamber is equipped with a unique set of adjustable, variable-speed, rotating vanes to improve the diffusion of the sound field. The interior of the chamber and the surrounding one-meter-wide air envelope are lighted, air conditioned and humidity-controlled and provided with electrical outlets and conduits for communication lines. Numerous pipe-sleeve openings of various sizes also are available for other specialized uses such as conduits for hydraulic, pneumatic, fuel or exhaust lines.

**Capability:** Although experimental verification has not been completed, the chamber is designed to provide a highly diffuse sound field in the frequency range 100 to 4000 Hz, and to permit reasonably accurate acoustical measurements to be made at frequencies as low as 50 Hz and as high as 10,000 Hz. The wide-band ambient noise level in the chamber with the vanes stationary is about 30 dB re  $20 \mu\text{N/m}^2$  for C-weighting and about 36 dB with vanes rotating at 5 rpm. The reverberation time  $T_{60}$  (60 decibel decay) is approximately 18 seconds at 100 Hz and about 5 seconds at 4000 Hz.

**Applications:** The chamber generally is used for measurement of sound power output of noise and sound sources (e.g., machinery, appliances, loudspeakers, sirens), sound absorption of architectural materials (e.g., acoustical tile, carpeting, drapery), random incidence calibration of sound level meters, microphones and noise exposure meters, and human response to noise.

**Availability:** When not otherwise in use and when staff members are available to prepare the facility for the user.

**Literature:** NBS Tech. News Bul., Vol. 52, No. 12, Dec. 1968.

**Contact:** Raymond D. Berendt, Sound Building, Room A117, Phone 301-921-3607.

# ANTENNAS



ANTENNA FIELD STRENGTH FACILITIES. Movable towers used for evaluating horn and dish antennas.

## ANTENNA ANECHOIC CHAMBER

A microwave darkroom which simulates free-space measurement conditions for antenna design and measurement. The outside dimensions are 20' long, 10' wide and 10' high. Nominal inside dimensions are 17' long, 7' wide, and 7' high. Access is through a 3' wide by 6½' high door.

**Capability:** The minimum specified frequency for the anechoic material is 500 MHz. The maximum absorber reflectivity is -20 dB at 500 MHz and decreases to -50 dB at 9 GHz. The 16' transmission path between test antennas determines the antenna aperture sizes which can be used. If the commonly used requirement of antenna separation of  $2(d_1 + d_2)/\lambda$  is applied and if the antenna dimensions of  $d_1$  and  $d_2$  are assumed to be equal then the maximum antenna aperture dimensions are 8 wavelengths for each antenna. Use of the facility can be made with reduced accuracy from 100 MHz to 500 MHz.

**Applications:** The anechoic chamber is located adjacent to an automatic network analyzer which provides

for rf signal generation and detection under computer control. This provides for the measurement of antenna characteristics such as complex reflection (impedance) and transmission coefficients over the frequency range of 0.1 to 18 GHz. Rigid coaxial cable for frequencies to 18 GHz connect each end of the anechoic chamber back to the automatic network analyzer. Data output is obtained on a high speed electrostatic printer-plotter, or may be viewed as a polar plot or rectangular plot on oscilloscopes.

**Availability:** To any qualified NBS research worker, after an initial training period with supervisor. In appropriate instances individual research workers from other Federal organizations can gain access to the facility.

**Contact:** W. E. Little, Program Chief, Automatic Network Analyzer Applications, Radio Building, Room 4633, NBS Boulder, Colo. 80302, Phone 303-499-1000 ext. 3658.

## ANTENNA FIELD STRENGTH FACILITIES

**Capabilities:** 1) Measuring gain on horn and dish antennas in the frequency range 500MHz to 75GHz, using two 20-foot towers capable of moving 200 feet apart on high-accuracy rails. 2) Scanning near-field radiation patterns and measuring gain in the frequency range 1 to 75GHz. 3) Measuring field strength and calibrating antennas and field strength intensity meters in the frequency range 10Hz to 1GHz. 4) Evaluation of electromagnetic hazard probes used for checking leakage fields, e.g. from microwave ovens or high power transmitters.

**Applications:** Measurement of antenna patterns and gains at frequencies from 10Hz to 75GHz.

**Availability:** To any qualified NBS research workers, after an initial training period with supervisor. In appropriate instances individual research workers from other Federal organizations can gain access to the facility.

### Literature:

[1] Accurate Measurement of Antenna Gain and Polarization at Reduced Distances by an Extrapolation Technique, A. C. Newell, R. C. Baird, and P. F. Wacker, IEEE Trans. A&P, Vol. AP-21, No. 4 July 1973, pp 418-431.

[2] Calibration Principles and Procedures for Field Strength Meters, H. E. Taggart and J. L. Workman, Nat. Bur. Stand. (U.S.) Tech. Note 370 (Mar. 1969).

[3] D. M. Kerns, "Correction of near-field antenna

measurements made with an arbitrary but known measure antenna," *Electron. Lett.*, vol. 6, pp. 346-347, May 1970.

**Contact:** Dr. R. C. Baird, Chief of Fields and Antennas Section, Radio Building, Room 4074A, NBS Boulder, Colo. 80302. Phone 303-499-1000, ext. 3301.

## ROOFTOP ANTENNA RANGE

The rooftop antenna range is located on the upper flat portion of the roof above Wing 6 of the Radio Building.

**Capability:** This rooftop antenna range was built to provide a means for antenna design and measurement for antennas too physically large or used at too low a frequency to be measured in the anechoic chamber. Two rigid coaxial rf cables and a multi-conductor intercom and power cable connect to the automatic network analyzer in the laboratory below. The automatic network analyzer provides for the rf signal generation and detection requirements.

**Applications:** Complex reflection (impedance) and transmission coefficients of antennas can be measured by making use of the automatic network analyzer over the frequency range of 0.1 to 18 GHz. Antennas can be measured at frequencies below 100 MHz by connecting the lead-in coaxial cables to other rf sources for signal generators and components for signal detection. Although this later equipment is not presently dedicated for use with the rooftop antenna range it is available for use from other projects.

**Availability:** To any qualified NBS research worker, after an initial training period with supervisor. In appropriate instances individual research workers from other Federal organizations can gain access to the facility.

**Contact:** W. E. Little, Program Chief, Automatic Network Analyzer Applications, Radio Building, Room 4633, NBS Boulder, Colo. 80302, Phone 303-499-1000 ext. 3658.

## BUILDING RESEARCH FACILITIES



*ACCELERATED WEATHERING LABORATORIES. Compressed air gun for shooting ice spheres to simulate hail damage to building materials and systems.*

## ACCELERATED WEATHERING LABORATORIES

The effects of sunlight, rain, hail, atmospheric contaminants, and salt spray are simulated by accelerated cycling on building materials and systems such as wall coverings and sidings, caulking, roofing, flooring, paints, and plastic coatings. Seven exposure stations throughout the United States and Puerto Rico provide a diversity of natural weathering conditions.

**Capability:** Radiant-energy sources of the accelerated test machines include single and twin carbon arcs, a fluorescent sunlamp/black-light unit, and both water and air-cooled xenon arcs. Monitoring is by dosimeters, radiometers, or actinometers. Some machines have temperature, humidity, and water spray controls, or light/dark cycle controls. A high-humidity chamber is used to subject samples to cycles of water condensation and drying. Flammability of roofing is tested in a small spread-of-flame apparatus. A compressed-air gun fires ice spheres up to 2½ inches diameter against roofing and siding specimens at measured speeds up to 145 feet per second.

**Applications:** Comparative studies of structural materials, coatings, claddings, and composites; identifica-

tion of relatively detrimental weathering conditions; research on mechanisms of deterioration; development of test procedures.

**Availability:** On contract agreement with other government agencies, when equipment is not fully utilized by NBS research programs. Members of the Section carry out the various tests.

**Literature:**

- [1] S. H. Greenfeld, Hail resistance of roofing products, Nat. Bur. Stand. (U.S.), Bldg. Sci. Ser. 23 (Aug. 1969)
- [2] L. F. Skoda, Performance of residential siding materials, NBS Report 10805 for Naval Facilities Engineering Command (1972)
- [3] J. R. Wright and V. E. Gray, Measurement of photochemical degradation in rigid poly (vinyl chloride), Conf. Supp. No. 1, London, 14-16 June 1965, Plastics Institute Trans.

**Contact:** Robert G. Mathey, Assistant Chief of Materials and Composites Section, Building Research Building, Room B340, Phone 301-921-3407.

## PLUMBING RESEARCH LABORATORY

With a high-speed, computerized data acquisition system and hot and cold water supplies with precisely controlled pressures and temperatures over a wide range of demands, as well as standard laboratory fluid services, this laboratory offers unique opportunities to advance the state of the art both in the design and in the evaluation of plumbing equipment and systems.

**Capabilities:** Tests on systems up to 45 ft. in height and up to 50 ft. in length. Water supply of up to 1000 gpm at constant head in gravity mode; up to 300 gpm in automatically controlled pressure mode up to 70 psi. Hot water at volumes up to 200 gph at 180°F.

Continuous measurements and recording of rapidly changing physical parameters such as pressure, discharge rate, water depth, and temperature, according to predetermined criteria, at up to 64 points. Data analysis through NBS central computer if desired.

Pre-programmed control of experimentation by computer if desired.

**Applications:** The development of improved criteria for general hydraulic design of and for prediction of loads on plumbing systems; the development of test methodology for calibration and performance evaluation of innovative plumbing equipment and systems; investigations of performance of piping materials as affected by pressure, flow, and contact with

hot and cold water; methodology for cost effective approaches in needed national programs to update information on plumbing loads and to develop a modern data bank on performance characteristics of innovative equipment and systems.

**Availability:** To qualified NBS research workers, after an initial training period. In appropriate instances the facilities can be utilized by other governmental research workers, or by university or industry workers.

**Literature:**

- [1] UA Journal, August 1972, pp 33-35.
- [2] Building Systems Design, May 1972, pp 50-54.
- [3] Commerce Today, February 21, 1972, pp 30-31.

**Contact:** Dr. L. S. Galowin, Chief of the Building Service Systems Section, Building Research Building, Room B306, Phone 301-921-3293.

## STRUCTURES LABORATORIES

Static and dynamic testing is accomplished by use of a heavily reinforced tie-down floor permitting mounting of complete structural members. Hydraulic actuators provide test loads in static test while closed-loop electro-hydraulic actuators provide test loads in dynamic tests. Automatic recording of up to 200 channels of sensor data is accomplished by a mini-computer-controlled data acquisition system.

**Capability:** The main test floor of heavily reinforced concrete and imbedded I-beams is 53 × 47 feet in size and is supplemented in the long direction by a 25 foot extension, 20 feet wide, for testing long beams. The 53-foot section has a 12,000 ft-kip bending moment capacity, and its 25-foot extension has a bending moment capacity of 8,000 ft-kips. The cross-wise section 47 feet in length will withstand a total bending moment of 21,000 ft-kips. The floor will withstand a total horizontal shear force of 1800 kips in either direction and a vertical shear force of 2,000 kips. It is serviced by two 10-ton bridge cranes having a clear hook height of 25 feet. The ninety-nine anchorage tie-down points are designed to withstand 100 kips of either tension force or horizontal shear force. Six additional points have twice this capacity. An associated laboratory, 22 × 75 feet, is serviced by two 2-ton cranes and contains two universal testing machines of 60,000-lbs, one of 200,000-lbs capacity, and two compression machines of 300,000-lbs and 600,000-lbs. capacity. The 600,000-lb capacity machine has adequate clearance for testing an 8-ft. high, 4-ft wide structural member.

**Application:** Beams, slabs, frames or complete structures can be subjected to static loads as limited by test floor capacity or cyclic loads up to 50,000 pounds with programmed amplitude and frequency. Signals in the range of 0 to 300 volts from load cells, strain gages, pressure transducers, LVDT's, and other types of electromechanical sensors are recorded on magnetic type and optionally printed on teletypewriters.

**Availability:** When not otherwise in use and when staff is available to prepare the facility for the user.

**Literature:**

- [1] Achenbach, P. B., Building Research at the National Bureau of Standards, Nat. Bur. Stand. (U.S.) Bldg. Sci. Ser. No. 0 (Oct. 1970).
- [2] Yokel, F. Y. and Somes, N. F., Structural Performance Evaluation of Innovative Building Systems, *ibid* Tech. Note 706 (Aug. 1972).

**Contact:** Dr. R. A. Crist, Chief of Structures Section, Building Research Building, Room B168, Phone 301-921-3471.

## THERMAL ENGINEERING LABORATORIES

This group of five laboratories permits performance testing of refrigeration and air conditioning equipment, heating systems, and insulating materials. Well controlled conditions of temperature and humidity are maintained in large test chambers. An analog and digital data logging system is available for 300 six-digit channels for 0.1 to 1000 volt inputs.

**Capabilities:** The Air Cleaning Laboratory contains a test duct capable of maintaining flows of 50 to 2500 cfm through a 2 ft  $\times$  2 ft device; also equipment for particle counting, dust sampling, and NBS dust spot efficiency. Air cleaners can be tested, anemometer scans checked, and field evaluation of dust problems made.

The Air Conditioner and Heat Pump Laboratory includes an indoor room 39 ft  $\times$  13 ft  $\times$  21 ft, controlled for 40°F to 140°F, and 50% rh at 35°F to 85°F dew-

point at 120°F; and an outdoor room 20 ft  $\times$  13 ft  $\times$  21 ft, controlled for -10°F to 150°F. Heat pumps may be tested in either the winter or the summer mode.

The Environmental Laboratory, 49 ft  $\times$  42 ft  $\times$  31 ft, is controlled for -46°C (-50°F) to 66°C (150°F), and 50% rh at 35°F to 85°F dewpoint at 120°F. Supply air is furnished by ceiling diffusers; damper-controlled air ducts in all eight corners of the room permit good air distribution. The floor is earth and may be excavated. Thermal performance or heating and cooling load measurements can be made either on models or on full-scale building constructions or equipments.

The Refrigeration Laboratory, 49 ft  $\times$  20  $\times$  17 ft, is controlled for -50°F to 150°F, and 50% rh at 35°F to 85°F dewpoint at 120°F. The ceiling is perforated, allowing 30,000 cfm of conditioned air through any or all quadrants. A large door permits access to outdoors, and the floor is concrete with a temperature-controlled space underneath. Long-term control of temperature, humidity, and air motion permits development of standard test methods for freezers, coolers, refrigerated spaces or vehicles, heated enclosures, air conditioning systems or large components, heating systems and large humidifying or dehumidifying equipments. A small dynamometer has a capacity of 15 hp.

The Thermal Conductivity Laboratory has a very uniform temperature control; being underground, it is effectively shielded from outdoor temperature variations. Equipment available can take measurements from -196°C (-320°F) to 1200°C (2200°F) on glass, ceramics, pure metals or alloys, in air, vacuum, argon, or helium. The NBS Guarded Hot Plate Apparatus is the standard method of ASTM C177 for absolute determination of the thermal conductivity of dry specimens of good insulators; its range is 0.1 to 10 Btu per hour ft<sup>2</sup> (°F/in.), or 0.15 to 15 milliwatts per cm °C from 0 to 130°F (-18 to 54°C).

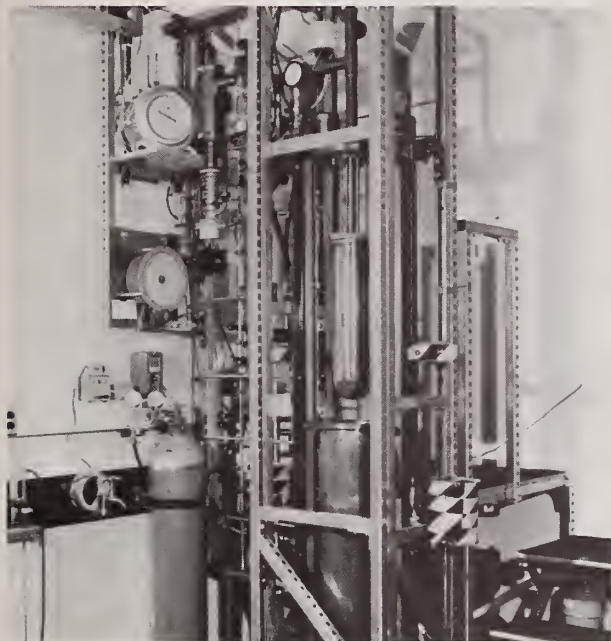
**Availability:** To any qualified guest worker, to the extent consistent with NBS requirements; to other Government agencies on request.

**Literature:**

- [1] Anthony, R. B., National Bureau of Standards and Environmental Research, ASHRAE J., January 1967, pp. 75-88.
- [2] Watson, T. W. and Robinson, H. E., Trans. ASME Heat Transfer **83C**, 403, (1961)
- [3] Peavy, B. A., J. Res. Nat. Bur. Stand. (U.S.) **67C**, (2) 119 (1963)

**Contact:** Frank J. Powell, Chief of Thermal Engineering Systems Section, Building Research Building, Room B104, Phone 301-921-3501.

# CALORIMETERS



**LOW TEMPERATURE ADIABATIC CALORIMETER.** The adiabatic calorimeter with associated cryogenic and vacuum equipment.

## FLUORINE COMBUSTION CALORIMETER

Solid samples may be reacted with fluorine gas in a nickel or monel 300 cm<sup>3</sup> combustion bomb. Gas samples may be reacted in a flame (flow calorimeter) with a monel burner.

**Capabilities:** Fluorine or other reactive gases are stored in a special hood and are dispensed by a manifold having a pressure range from 10<sup>-5</sup> micrometres mercury to 30 atmospheres. Both the manifold and calorimeters are located in a second safety hood. Under optimum conditions, the sample sizes should be such as to cause 40 kJ to be liberated as heat in the reaction. Under these conditions energies or enthalpies of reaction may be determined with a precision of better than 0.02%. Auxiliary equipment is available to handle and prepare samples.

The combustion vessel is located in a stirred-water isoperibol calorimeter. The temperature of the calorimeter jacket is held constant to within 0.001°C. Calorimeter temperatures are measured by a quartz-oscillator sensor with digital printout. The calorimeter is calibrated electrically. Reduction of temperature-time data is carried out by a time-shared computer.

**Applications:** Used to determine enthalpies of reaction at or near room temperature, for the purpose of obtaining enthalpies of formation, enthalpies of solution, and related thermodynamic properties of substances.

**Availability:** Because of the complexity of the instrumentation and the procedures of operation, use of this facility is limited to qualified members of the NBS staff or scientists, after specific training of perhaps two months. The facility may be used indirectly through cooperative or contractual research agreements.

**Contact:** Dr. G. T. Armstrong, Chief of Thermochemistry Section, Chemistry Building, Room B350, Phone 301-921-2131.

## LOW TEMPERATURE ADIABATIC CALORIMETER

This instrument was designed and built at NBS to make high accuracy heat capacity measurement for characterization of the thermodynamic properties of materials. The instrument is automated for round-the-clock operation.

**Capability:** Specimens in solid or liquid state compatible with gold plated copper cell. Temperature range, 2 to 380 K with  $\pm 0.001$ K accuracy (referenced to IPTS 1968). Heat capacity accurate to 0.05%. A lower accuracy scanning mode is being considered for alternative operation in the future.

**Applications:** Low temperature thermodynamic properties; glass transition; heats of fusion and transition; comparison of glass and crystal states; zero point entropies; sensitive measure of glass transitions using thermal drifts; detection of small effects of thermal history.

**Availability:** Operation under the direct supervision of Dr. S. S. Chang. Measurements of mutual interest can be arranged with NBS and other government personnel in accord with agreement.

### Literature:

- [1] K. F. Sterrett et al, An adiabatic calorimeter for the range 10 to 360 K, J. Res. Nat. Bur. Stand. (U.S.) **69C**, 19 (1965).
- [2] S. S. Chang and A. B. Bestul, Heat capacities of Cis-1, 4-polyisoprene from 2 to 360 K, J. Res. Nat. Bur. Stand. **75A**, 113 (1971).

**Contact:** Dr. Martin G. Broadhurst, Chief of the Dielectric and Thermal Properties Section, Polymer Building, Room B318, Phone 301-921-2748.

# MICROCALORIMETRY

**Capability:** The facility provides the capability for measuring small thermal power (uncertainty within  $\pm 10 \mu\text{W}$ ) associated with (a) energies of reaction in aqueous solution at 300 K; (b) energies of transition over the range 300 to 470 K; and (c) energies of vaporization from 300 to 470 K. A commercial Calvet-type microcalorimeter and NBS-designed microcalorimeters are available, utilizing the basic principles of heat conduction microcalorimetry.

A thermopile is used to measure the temperature difference between the reaction vessel and a heat sink maintained at constant temperature. Measurement of the emf of the thermoelement as a function of time yields a measure of the rate of heat exchange. Resolution of the thermoelement voltage to within a few nV corresponds to a temperature sensitivity of a few tenths of a microdegree. Data are recorded both in analog and in digital form. For calibration purposes, electrical energy may be introduced with a precision better than 0.01%.

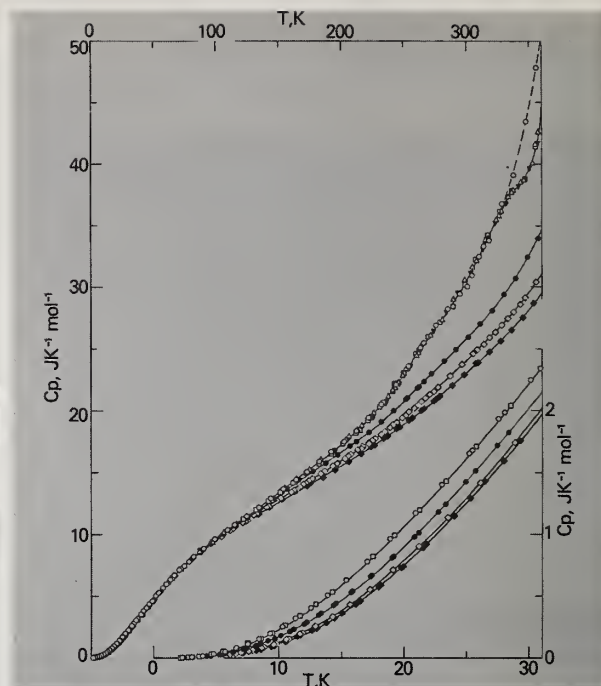
**Applications:** Many applications are found in the biological sciences where heat, as a totally non-specific entity, has been found to be a useful tool for studies involving enzyme catalyzed reaction, bacterial metabolism, cellular phenomena, and immunological processes. Since nearly all reactions of biological substances are accompanied by heat effects, microcalorimetry also possesses substantial potential for analytical purposes.

**Availability:** Because of the complexity of the instrumentation and the procedures of operation, use of the facility is limited to qualified members of the NBS staff or other scientists, after specific training of perhaps two months. The facility may be used indirectly through cooperative or contractual research agreements.

## Literature:

- [1] E. Calvet and H. Prat, "Recent Progress in Microcalorimetry," translated from the French by H. A. Skinner, The MacMillan Company, New York, 1963.
- [2] "Biochemical Microcalorimetry," H. D. Brown, editor, Academic Press, New York, 1969.
- [3] R. N. Goldberg, R. L. Nuttall, E. J. Prosen, and A. P. Brunetti, NBS Report No. 10 437 (1971).

**Contact:** Dr. G. T. Armstrong, Chief, Thermochemistry Section, Chemistry Building, Room B350, Phone 301-921-2131.



Typical specific data for different standard reference materials of polyethylene, using the LOW TEMPERATURE ADIABATIC CALORIMETER. The second-order glass transition is evident for the sample with the largest  $C_p$  around 240 K.

## PLATINIUM-LINED ADIABATIC SOLUTION CALORIMETER

**Capability:** Liquid or crystalline samples up to  $2.7 \text{ cm}^3$  in volume are dissolved in  $300 \pm 15 \text{ cm}^3$  of any solution reactant that does not attack platinum. Minor modifications permit the introduction of gaseous samples in a flow system. For exothermic or endothermic reactions of 200 J or more, enthalpies of solution may be measured between 293 and 363 K for both rapid and slow reactions, with a precision of 0.02%.

Calorimeter temperatures are measured with a quartz-oscillator sensor with digital printout. The adiabatic shield temperature is controlled automatically to eliminate heat transfer to the calorimeter from its environment. The data are processed by a time-shared computer. The calorimeter is calibrated by supplying a known amount of electrical energy to the calorimeter resistance heater before and after the chemical reaction measurements.

**Applications:** Used to determine enthalpies of reaction at or near room temperature, for the purpose of obtaining enthalpies of formation, enthalpies of solution, and related thermodynamic properties of substances.

**Availability:** Because of the complexity of the instrumentation and the procedures of operation, use of the facility is limited to qualified members of the NBS staff scientists, after specific training of perhaps two months. The facility may be used indirectly through cooperative or contractual research agreements.

**Literature:** Prosen, E. J., and Kilday, M. V., *J. Res. Nat. Bur. Stand. (U.S.)* **77A**, 179 (1974).

**Contact:** Dr. G. T. Armstrong, Chief of Thermochemistry Section, Chemistry Building, Room B350, Phone 301-921-2131.

## ROTATING PLATINUM-LINED, ADIABATIC BOMB CALORIMETER

**Capability:** Solid or liquid samples are reacted with oxygen at 30 atm pressure in a 100 cm<sup>3</sup> combustion bomb. The type of sample is limited only in that the products of the reaction must not be any chemical species that attacks platinum. A uniform concentration of aqueous products is assured by continuous rotation of the calorimeter. Amounts of sample are normally such as to cause 2500 J to be liberated as heat in the reaction. Under optimum conditions, the energy of reaction can be determined between 298 K and 323 K with a precision of better than 0.005%. Calorimeter temperatures are measured potentiometrically with a platinum resistance thermometer as the sensor. The adiabatic shield temperature is controlled automatically to eliminate heat transfer to the calorimeter from its environment. Determination of the amount and products of reaction can be determined by measurement of the amount of CO<sub>2</sub> gas formed, and by analysis of aqueous solution constituents.

**Applications:** Used to determine enthalpies of reaction at or near room temperature, for the purpose of obtaining enthalpies of formation, enthalpies of solution, and related thermodynamic properties of substances.

**Availability:** Because of the complexity of the instrumentation and the procedures of operation, use of this facility is limited to qualified members of the NBS

staff or other scientists, after specific training of perhaps two months. The facility may be used indirectly through cooperative or contractual research agreements.

**Contact:** Dr. G. T. Armstrong, Chief of Thermochemistry Section, Chemistry Building, Room B350, Phone 301-921-2131.

## COMPUTER

### CENTRAL COMPUTER FACILITIES

The NBS Central Computer Facilities are available on a fee-for-service basis to support Government programs. In addition to Federal agencies, certain state and local government agencies, non-profit organizations, universities and private organizations, may qualify for use of the facilities. Service can be provided to non-Federal agencies on joint projects or for work that cannot be done effectively in the private sector. Arrangements can often be made to process work through remote terminals.

**Facility Overview:** The main computer in the NBS Central Facility is a UNIVAC 1108. The present operating system, EXEC 8, is a general purpose executive designed to operate in a multiprogramming environment which provides for a variety of user options. Access to the main computer is provided to both on-site users and those at remote terminals connected via telecommunications. Software support includes FORTRAN, COBOL, ALGOL, FLOWGEN (Automatic Flow Chart Generation), XBASIC, and OMNITAB (a computer language developed at NBS for statistical and numerical analysis).

**Univac 1108:** The UNIVAC 1108 includes 262,144 thirty-six-bit words of 750 nanosecond core memory. Auxiliary high-speed (1,440,000 characters per second) drum storage of approximately 25-million characters capacity provides for efficient workload control and swapping of executive program files. Other drum storage of approximately 925-million characters (FASTRAND mode) provides the needed capacity for on-line storage of application programs and data files. In addition, the system configuration includes eight seven-track VIII-C Tape Drives (200, 556, 800 CPI), two nine-track VIII-C Tape Drives (800 CPI), one 758 high-speed Printer, one 1403 off-line Printer, one 1004 Reader/Printer, one 1004 Card Punch, one high-speed Card Punch (300 CPM), and one high-speed Card Reader (900 CPM).

**Graphics Facilities:** The Central Computer Facility provides off-line plotting on a CalComp 763 Zip-Mode Digital Plotter, Computer Output to Microfilm (or hard copy) using a Stromberg-Carlson 4020, and extended character printing. A Graphical Display System software package is available which permits optical output to a variety of display devices including the CalComp Plotter, the S-C 4020 Microfilm Recorder, or the Line Printer.

**Capacity to Handle Scientific Documents:** An extended character input/output subsystem, presently operating off-line to the 1108, permits users to take full advantage of the information interchange facilities of the American National Standard Code for Information Interchange (ASCII). This provides character printing sufficient to handle scientific documents at the normal level of complexity in notation, including half-line spacing for superscripts and subscripts, a repertory of Greek alphabetic characters and an assortment of special signs and symbols. Off-line paper tape facilities exist for entering ASCII punched paper tape as data via a 300 CPS optical scan paper tape reader.

**Applications and Services:** While the primary use of the central computer facility is as a laboratory tool for the technical staff of NBS and other agencies, an increasing level of support is provided to a variety of administrative and other data processing applications.

A consultant is available during working hours by phone or in the computer center for advice on details of system operation and problems owing to system and program interaction. New system development is frequently done for problem areas of general utility. Periodic training sessions are held to acquaint users with various system capabilities (both hardware and software).

**Literature:** Various manuals are available to NBS users in the storeroom in the Administration Building. Other-agency users may secure manuals through the Management Assistant's office (301) 921-3364.

**Use of Computer Facilities:** Charges for the various computer services are on a cost-reimbursable basis, and rate schedules are available.

Interested parties may contact Mr. R. A. Palladino, Management Assistant, Room A225, Administration Building, NBS, Washington, D. C. 20234 (telephone (301) 921-3364).

## ELECTRICAL MEASUREMENTS FACILITIES



*NON-MAGNETIC FACILITY. The probe shown in the foreground travels along the axis of the 1000-turn precision solenoid to locate the axial position of each turn of wire and to compare the relative area enclosed by each turn. This measurement allows calculation of the magnetic field produced by a known current.*

## AUTOMATIC NETWORK ANALYZER

Provides computer controlled rf stimulus for the calibration and measurement of passive quantities such as impedance, reflection coefficient, and attenuation and active quantities such as power and voltage. This is a commercially available item which has been modified into a special high accuracy system by NBS personnel.

**Capability:** The automatic network analyzer provides for discrete frequencies in the range of 0.1 to 18

GHz as an rf stimulus, applies these signals to the device under test, measures their characteristics, mathematically manipulates the data if necessary and outputs the data. The data output is available as a tabulation on a teletype or high-speed printer, a plot or diagram on an electrostatic plotter, or may be viewed as polar or rectangular plots on an oscilloscope. The measured data is in complex form and may be reflection coefficient, impedance, renormalized impedance, VSWR, attenuation, gain, or phase angle for passive quantities. Data output is in watts, volts, or fractional (decimal) parts thereof for active quantities. The connector types for connection to the automatic network analyzer may be in coaxial type such as APC-7, GR-900, type "N" male or female, and in all the waveguide sizes used in the above frequency range.

These capabilities can be adjusted for either normal laboratory precision or for high accuracy standards and calibration type measurements. The NBS add-on system for high accuracy measurements and calibrations is presently undergoing evaluation.

**Applications:** The automatic network analyzer is intended for design, measurement, and calibration of rf and microwave components such as terminations, attenuators, thermistor mounts, crystal detectors, FIM receivers, antennas, filters, amplifiers, transistors, etc. As described previously these may be of coaxial or waveguide type usage devices.

**Availability:** To any qualified NBS research worker, after an initial training period with supervisor. In appropriate instances individual research workers from other Federal organizations can gain access to the facility.

**Contact:** W. E. Little, Program Chief, Automatic Network Analyzer Applications, Radio Building, Room 4633, NBS Boulder, Colo. 80302, Phone 303-499-1000 ext. 3658.

## ELECTRO-OPTICAL HIGH VOLTAGE FIELD MAPPING SYSTEMS

State-of-the-art electrical and electro-optical measurement techniques are employed for measurement of high voltages, and for observation and probeless fringe-pattern mapping of high-intensity electric fields in insulating dielectrics. Apparatus allows operation under microsecond pulsed, and either steady-state direct or alternating voltages. Unique advantages afforded by the recently developed NBS electro-optical systems include their freedom from electro-

magnetic interference errors and their provision for direct visual observations (analogous to those used conventionally in photoelastic studies of mechanical stress) of electrical stress distributions.

### Capability, Operating Ranges, and Accuracy:

- 1) Pulsed Operation: peak voltages from 20 to 300 kV, risetimes of 0.5 to 2.0  $\mu$ s with durations up to 10  $\mu$ s, repetition rates to 4 pulses per minute, measurement accuracy within  $\pm 1\%$ .
- 2) DC Operation: from 0 to 100 kV, measurement accuracy 0.01%.
- 3) AC Operation: from 0 to 50 kV rms, from 40 to 200 Hz, measurement accuracy to 0.01%.

Programs are available for automatic reduction and analysis of data, using NBS computer facility.

**Applications:** For calibration of HV pulse-measuring devices; for design studies with visualization of both steady-state and dynamic electrical stress distributions in selected insulating dielectrics; for visualization of the effects of space charge, suspended particles, dissolved ionic impurities and electrode composition, polish and geometry on electrical conduction in selected insulating liquids; for mapping of electric field distribution around immersed solid insulator models; for measurement of Kerr electro-optical coefficients of liquids; for dynamic and steady-state electrical breakdown studies in selected dielectrics; etc.

**Availability:** To qualified U.S. research workers from industry, government, and academic communities in cooperation with NBS supervisor. Scheduling is required to avoid conflict with in-house NBS research, calibration and testing programs.

### Literature:

- [1] NBS Tech. News Bull., Sept. 1972, Vol. 56, pp. 207-209.
- [2] Rev. Sci. Instr., June 1972, Vol. 43, pp. 886-893.
- [3] J. Res. NBS, Vol. 73C, pp. 5-13, Jan.-June 1969.

**Contact:** Oskars Petersons, Chief, High Voltage Measurements Section, Metrology Building, Room B344, Phone 301-921-3121.

## NON-MAGNETIC FACILITY

The non-magnetic building is located on an isolated area of the bureau grounds, in the center of a 600-ft square buffer zone. The building is a three-story

structure (ground level plus two stories) constructed of non-magnetic materials and contains a minimum amount of electrically conducting materials. The building contains four isolation piers, one serving the ground floor and three serving the second floor level. A service building 300 ft from the non-magnetic building provides the general laboratory equipment and support. Experiments in the non-magnetic building can be controlled and monitored from the service building.

**Capability:** Typical earth's magnetic field gradients are  $10 \text{ nT} \cdot \text{m}^{-1}$  in the vertical direction and  $3 \text{ nT} \cdot \text{m}^{-1}$  in the horizontal direction. Three-dimensional Helmholtz coils are available for cancelling the earth's magnetic field. Variations in the earth's field can be reduced by servo-ing to a magnetometer system in the magnetometer station located nearby. A precision solenoid is available to provide a magnetic field of  $1.2 \times 10^{-3} \text{ T}$  which is uniform within a 4-cm diameter sphere and accurate to about 0.5 ppm in terms of the NBS electrical standards. Equipment for automation and data acquisition is available.

**Applications:** The facilities of the non-magnetic building provide an environment where accurately known uniform magnetic fields can be applied to an experiment or where the earth's magnetic field strength and variations can be reduced a known amount. Currently the gyromagnetic ratio of the proton and the absolute ampere experiments are housed there.

**Availability:** The facility is available, when neither of the above two experiments are in active operation, for a compatible experiment which will not compromise the non-magnetic environment.

#### Literature:

- [1] R. L. Driscoll and P. T. Olsen, *The Review of Scientific Instruments*, Vol. 42, No. 10, 1427
- [2] R. L. Driscoll and P. T. Olsen, *Proc. of the International Conf. on Precision Measurement and Fundamental Constants*, NBS Special Publ. 343, 117 (1970).
- [3] B. N. Taylor, D. N. Langenberg, and W. H. Parker, *Scientific American*, Vol. 223, No. 4, 62 (1970).

**Contact:** Dr. E. R. Williams, Absolute Electrical Measurements Section, Non-Magnetic Building, Phone 301-921-2007.

## REACTANCE BRIDGE FOR POWER LOSS MEASUREMENT

A typical high voltage inductor or shunt reactor on a power transmission line has a reactive power rating of 100 megavolt-amperes and a power loss of about 220 kilowatts. Thus the power losses are of economic significance, but it is difficult if not impossible to measure them by conventional wattmeter methods because of the low power factor, i.e. the presence of very large reactive or circulating power. The shunt reactors are used to "tune out" the capacitances of transmission lines. A reactance bridge has been developed and constructed which in conjunction with readily available high-voltage standard capacitors can measure accurately such losses. Inductance and capacitance can also be measured. The instrument is designed for measurement of devices rated at moderate to extra high voltages—several hundred volts to one megavolt.

**Capability:** The instrument can be used at either the NBS or a commercially available high voltage laboratory. The voltage and power ranges depend principally on the capability of the power supply in the laboratory—for the NBS laboratory these are 220 kV, 200 kVA. Some commercial laboratories have capabilities of the order of 1 MV and 100 MVA. When used in conjunction with a typical high voltage standard capacitor having a capacitance value of 100 pF, the inductance range of the specimen is from 0.12 H to 600 H; the range for capacitors is from 100 pF to  $50 \mu\text{F}$ . The power losses can be measured to about one-percent accuracy; the inductance and capacitance to about 0.01 percent to 0.1 percent accuracy.

**Applications:** Primarily power loss measurements of large capacitors and inductors such as energy storage and power factor correction capacitors, high voltage shunt reactors (inductors); also impedance measurements of the same.

**Availability:** To any qualified NBS research worker or group. The High Voltage Measurements Section will provide an operator for the instrument and high voltage power supplies.

The use of the instrument is also available to outside groups in the form of calibration and test services.

**Literature:** NBS Tech. News Bull., April 1973, Vol. 57, No. 4, page 91.

**Contact:** Oskars Petersons, Chief of High Voltage Measurements Section, Metrology Building, Room B344, Phone: 301-921-3121.

# ELECTRON MICROSCOPES



*Photomicrograph of a stainless steel powder, magnified 600 times. The large depth of focus of the SCANNING ELECTRON MICROSCOPE is demonstrated in this photomicrograph.*

## SCANNING ELECTRON MICROSCOPE

With resolution and depth of focus well beyond that of optical microscopes, this device uses a fine electron-beam probe to explore the minutiae of surface structure of materials such as lunar rocks, bridge structure fractures, microelectronic circuits, and dental restorations. For rough specimens, stereo-pair photography permits three-dimensional examination. Selected area electron channelling patterns can be obtained, and divergent-beam x-ray (Kossel) patterns can be prepared for use in determining local stress-strain configurations.

**Capability:** Replica or actual specimen up to 2.5 cm diameter and 1 cm thick. Resolution of 25nm, and maximum magnification of 100,000x. Electron beam of about 10 nm (100Å) diameter is driven across specimen, while secondary electrons, backscattered electrons, and x-rays are each detected and amplified to modify the brightness of a CRT raster. A data acquisition system and data reduction programs are available.

**Applications:** Behavior of grain boundaries in embrittled copper-palladium welds; checking of resolu-

tion using dendrites of aluminum-tungsten; identification of material in micrometeoritic lunar craters; distinguishing chrysotile from termolite; qualitative chemical analysis of microscopic particles; effect of polishing on dental materials; rusting through pinholes in enameled steel; bonding and defects in microcircuitry wafers; hydrogel coating on aortic catheters; wear of currency papers; sharpness of tungsten field-emitter tip.

**Availability:** To any qualified NBS research worker, after an initial training period. Over 30 NBS scientists have become competent operators. In appropriate instances individual research workers from other Federal organizations can gain access to the facility.

**Literature:** NBS Tech. News Bull., March 1972, Vol. 56, No. 3, pages 60-63.

**Contact:** Dr. Arthur W. Ruff, Jr., Chief of Lattice Defects and Microstructures Section, Materials Building, Room B118, Phone 301-921-2991.

## TRANSMISSION ELECTRON MICROSCOPE, 200 kV

This instrument allows high resolution examination of surface replicas and actual, thin-foil specimens of metals, ceramics, and polymers. Analysis of microstructure and lattice defects in crystalline materials can be made by electron diffraction contrast and selected area electron diffraction. Compared to conventional transmission electron microscopes (100 kV), specimens which are 70% thicker can be examined. This facilitates specimen preparation, increases foil rigidity, and reduces surface effects.

**Capability:** Accelerating voltages of 50, 100, 150, and 200 kV. Selected area electron diffraction and electromagnetic beam tilting ( $\pm 3^\circ$ ) for dark field imaging. Side entry goniometer stage with: double-tilt ( $X = \pm 60^\circ$ ,  $Y = \pm 45^\circ$ ), rotation ( $360^\circ$ )—tilt ( $\pm 60^\circ$ ), and heating (to  $1000^\circ\text{C}$ )—tilt specimen holders for specimens up to 3.05 mm in diameter. Resolution (line) of 0.7 nm (7 Å) and maximum magnification of 150,000x. Data recorded on  $3\frac{1}{4} \times 4$  inch glass photographic plates.

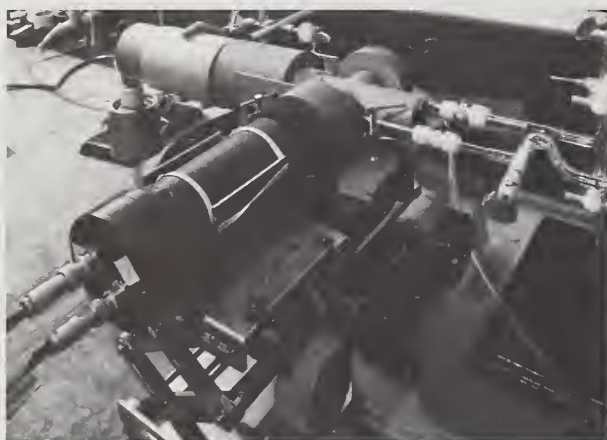
**Applications:** Examination of the surface regions of various ceramic materials after abrasive and smooth-sliding wear; analysis of deformation and fracture mechanisms in ceramics as a function of temperature; analysis of cracks and crack healing processes in ceramics; microstructure characterization of cemented carbides; determination of stacking fault

energy as a function of temperature in Ag-Sn and Au-Sn alloys; analysis of deformation modes in superplastic Al-base alloys; study of deformation and corrosion in Cu-, Fe-, and Ni-base alloys.

**Availability.** To experienced electron microscopists having research applications which require high voltage electron microscopy.

**Contact:** Dr. Bernard J. Hockey, Physical Properties Section, Materials Building, Room A355, Phone 301-921-2901.

## ENVIRONMENTAL FACILITIES



SULFUR DIOXIDE POLLUTION MONITOR.

## PRECISION HUMIDITY MEASUREMENT

This facility comprises two precision humidity generators and a gravimetric hygrometer that can be used separately or in combination for calibration, testing, and development of instruments, sensors and devices and for research on the properties of moist gases. The generators produce continuous gas flows of constant moisture content whereas the hygrometer makes accurate humidity measurements.

**Capability:** Gas flows up to 150 cubic decimetres per minute. Ambient temperatures from +65 to -75°C. Mixing ratios from about 150 to  $1 \times 10^{-5}$  g/kg (1.5  $\times 10^{-3}$  to 0.01 ppm). Dew point of +65°C to frost point of -100°C. Ambient pressures from atmospheric to 50 mb. Generated moisture contents known to 0.5 percent or better over most of range and to 2 percent at extremes. Measurement accuracy 0.1

percent. Limited capability for response time testing. Data acquisition system available.

**Applications:** Calibration of dew-point hygrometers, psychrometers, electric hygrometers, infra-red hygrometers, dewcells, coulometric hygrometers; evaluation and testing of such sensors as carbon film, aluminum oxide, crystal array, lithium chloride, barium fluoride; enhancement of water vapor in air with pressure.

**Availability:** Facility available for use on tests, research or programs of NBS divisions, other Government agencies, and industrial or scientific laboratories.

### Literature:

- [1] J. Res. NBS **40**, 479 (1948)
- [2] NBS Monograph 73 (1964)
- [3] ISA Trans. **7** (No. 4), 356-362 (1969)

**Contact:** Arnold Wexler, Chief, Humidity Section, Physics Building, Room B356, Phone 301-921-2794.

## SULFUR DIOXIDE POLLUTION MONITOR

Sulfur dioxide, released in air by burning sulfur-containing coal and oil, is one of the most common air pollutants. This detector, based on measuring the intensity of the fluorescence excited by a Zn or Cd light source, is capable of continuously monitoring sulfur dioxide in air over a wide range of concentration. The procedure is rapid, simple in operation, and is specific to sulfur dioxide.

**Capability:** The device developed at NBS can measure  $\text{SO}_2$  in air from 1500 parts per million down to a few parts per billion. The response is linear over this wide range of concentration. The detector responds specifically to sulfur dioxide and is free from interference with water and other common gases present in air. In the ppm range the photoelectron signal can be amplified and displayed on a recorder. In the ppb range, however, a few minutes integration of the photoelectron flux from the photomultiplier tube is necessary.

**Applications:** The measurement of  $\text{SO}_2$  in smokestack effluent and in ambient air. Quick calibration of cylinders containing standard mixtures of  $\text{SO}_2$  and air.

**Availability:** To any qualified NBS research worker after an initial training period with Dr. Frederick P. Schwarz. In appropriate instances individual research workers from other Federal organizations can gain access to the facility.

**Literature:** Hideo Okabe, P. L. Splitstone, and J. J. Bells, Ambient and Source SO<sub>2</sub> Detector Based on a Fluorescence Method, J. Air Pollution Control Assoc. **23**, 514 (1973).

**Contact:** Dr. Hideo Okabe, Consultant to the Physical Chemistry Division, Chemistry Building, Room A247, Phone 301-921-2719.

## FIRE RESEARCH

### FIRE RESEARCH LABORATORY

A special laboratory building for large scale fire experiments has just been completed.

**Capability:** A major feature of the building is a 60 ft × 120 ft test floor with a 32 ft ceiling height. The test floor is equipped with smoke abatement equipment to meet air pollution regulations, water supplies and floor drains, making it suitable for a variety of fire experiments. A shop for the fabrication of test structures, a conditioning room for the storage of materials and test structures prior to test, an instrument room, and office and service areas complete the building.

The only permanent experimental facility on the test floor is the Fire Research Test Furnace described in detail below. Other test structures and apparatus are erected as needed for specific programs, providing maximum flexibility in space utilization.

**The facilities are:** A room and corridor facility. This consists of a corridor approximately 50 ft long with two 8 ft by 8 ft rooms opening onto the side wall. Provisions are made for varying the wall and ceiling spacings and controlling draft conditions. The facility can be used for study of the spread of fire through corridors, the movement of smoke and gas through room-corridor systems, the effect of surface finishing materials on fire spread, and related purposes.

A burn room and smoke movement facility. This is a two story masonry structure with controlled ventilation and communication between floors. It can be used to conduct studies of the burning of room furnishings or to study the spread of smoke, gas, and fire through a multi-compartment structure.

A rate of heat release calorimeter. This instrument measures the rate of heat release and the total heat release from a large sample of material when exposed to a controlled energy flux. It is used to measure the energy contribution of materials involved in a building fire.

A research test furnace. This is a medium-sized unit providing conformity with the temperature-time exposure specification of ASTM E119, plus extension to 150%. It will accommodate 30-ton walls or partitions 10 feet long by 8 feet high, 20-ton columns 8 feet high, or 20-ton floor-ceiling assemblies 8 feet by 10 feet. Furnace pressure is controllable between -0.05 and +0.15 in. water to permit study of the effect on fire performance. The furnace can be used for fire endurance tests on structural components such as ducts, dampers, doors, and plumbing systems, on innovative constructions such as double modular walls, and on joints in wall-floor assemblies.

**Applications:** The Fire Research Laboratory provides a location where large scale fire experiments can be carried out under controlled conditions. Space is available for the construction of a variety of experimental installations.

**Availability:** Available upon request for research experiments for other Government agencies and industrial groups. Available for research programs of Industrial Research Associates. Availability of specific facilities is dependent on workload.

#### Literature:

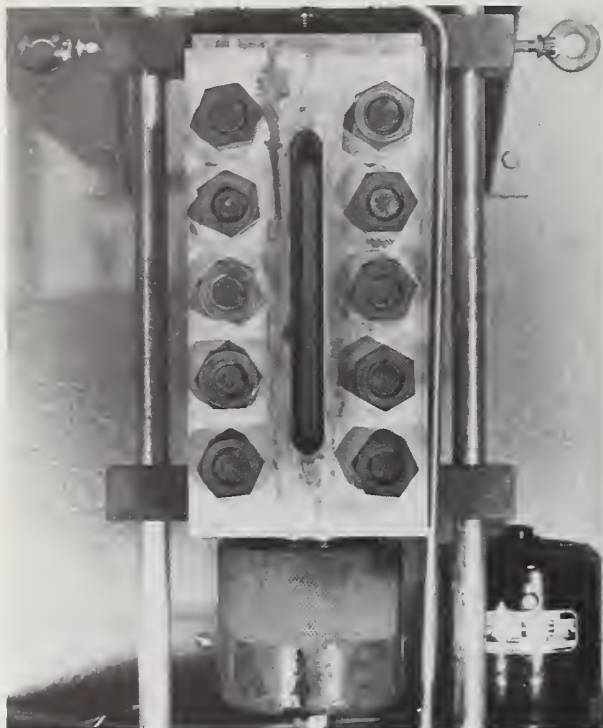
- [1] Francis C. W. Fung, Miles R. Suchomel and Philip L. Oglesby, The NBS Program on Corridor Fires, Fire Journal **67**, pages 41-48 (May 1973).
- [2] W. J. Parker and M. E. Long, Development of a Heat Release Rate Calorimeter at NBS, ASTM STP 502, pages 135-151 (1972).

**Contact:** Mr. I. A. Benjamin, Fire Technology Division, Technology Building, Room B64, Phone 301-921-3255.



A room fire test in the FIRE RESEARCH LABORATORY.

# HIGH PRESSURE FACILITIES



HIGH PRESSURE PVT DILATOMETER. The mercury column is seen in the capillary inside the pressure chamber.

## HIGH PRESSURE GENERATORS

Two systems for generating high pressures have been developed for the measurement of electrical, mechanical and pressure/volume properties of liquids and solids.

### Capability:

|                    | System I                        | System II                             |
|--------------------|---------------------------------|---------------------------------------|
| MAXIMUM PRESSURE   | 26 kbar<br>2600 (MPa)           | 40 kbar<br>(4000 MPa)                 |
| USABLE VOLUME      | 19mm diameter<br>× 100mm length | 10mm diameter<br>× 10mm length        |
| ELECTRICAL LEADS   | 4                               | 1                                     |
| PRESSURE GAGE      | manganin                        | ram force                             |
| TRANSMITTING FLUID | pentane mixtures                | pentane mixtures,<br>also soft solids |

**Application:** System I has been used for ultrasonic measurements on solids and liquids, for electrical resistance measurements, for measurements of crack propagation in glasses and for the study of phase transition. Apparatus requiring electrical leads can be plugged into a receptacle at the inside bottom of the pressure vessel. A total of four leads are available.

System II has been used for ultrasonic measurements in liquids and in solids under either hydrostatic or non-hydrostatic conditions. Transducers to detect shear or longitudinal mode properties are mounted on the outside; they use a back plate as acoustic buffer. A back plate with one electrical lead is also available.

**Availability:** The equipment is available to qualified researchers after an initial training period or with assistance from Section personnel.

**Literature:** D. L. Decker et al, High-Pressure Calibration, A Critical Review, J. Phys. & Chem. Ref. Data, 1, no. 3, pp. 173-836, 1972.

**Contact:** Dr. Peter L. M. Heydemann, Chief, Pressure and Vacuum Section, Metrology Building, Room A149, phone 301-921-2121.

## HIGH PRESSURE OPTICAL FLUORESCENCE SYSTEM

The optical system measures the pressure-dependent shift of the sharp fluorescent  $R_1$ -line of ruby which has been calibrated against the compression of NaCl as the primary standard. The system was developed to measure pressure in the diamond-anvil high pressure cell, but with minor modification can be used in any pressure vessel which has optical access.

**Capability:** Quantitative pressure determinations are made to 200 kbar with an accuracy in the range of 5 percent. Temperature capability to 300°C is also available, but the accuracy in the pressure measurement is significantly reduced at this temperature.

**Applications:** Characterization of phenomena induced by pressure—such as phase transitions in solids, freezing pressures of liquids, glass transition pressures in vitrified materials, compressibility measurements (in conjunction with x-ray measurement), and pressure distribution in various pressure transmitting media.

**Availability:** On a selective basis when not required for Crystallography Section programs. The system must be operated by Section personnel and only work of mutual interest can be undertaken.

#### Literature:

- [1] Science **176**, 284 (1972)
- [2] Rev. Sci. Instr. **44**, 1 (1973)

**Contact:** Dr. G. J. Piermarini, Materials Building, Room B224, Phone 301-921-2950.

## HIGH PRESSURE PVT DILATOMETER

This PVT (pressure-volume-temperature) apparatus is used to measure the density of liquids and solids (including polymers) with varying temperature and pressure. The method employs pressurized dilatometry in which a dilatometer is placed in a pressure chamber with glass windows. This chamber is, in turn, placed in a liquid thermostat with glass windows which is controlled by a refrigerator and electric heaters. The pressure is generated by a hand pump and may be determined by a bourdon or dead weight piston gage. The sample volume is determined in terms of the relative height of the mercury column of the dilatometer, using a cathetometer.

**Capability:** Temperature range,  $-40$  to  $200^{\circ}\text{C}$ . Constant heating and cooling rates may be selected as low as  $.05^{\circ}/\text{hr}$ ; pressure range, 800 bar. (This range may be extended to 2 kbar by using a suitable pressure chamber.) A dead weight piston gage is available to maintain constant pressure during, for example, isobaric heating and cooling, and volume creep measurements.

**Applications:** Ordinary equilibrium PVT measurements, including phase changes. Non-equilibrium measurements may include influence of temperature and pressure on glass transition and crystal growth mechanisms, glasses formed at constant volume, and volume creep and stress (pressure) relaxation. The densification of polymer glasses at elevated formation pressures gives a higher refractive index which suggests their use as optical lenses.

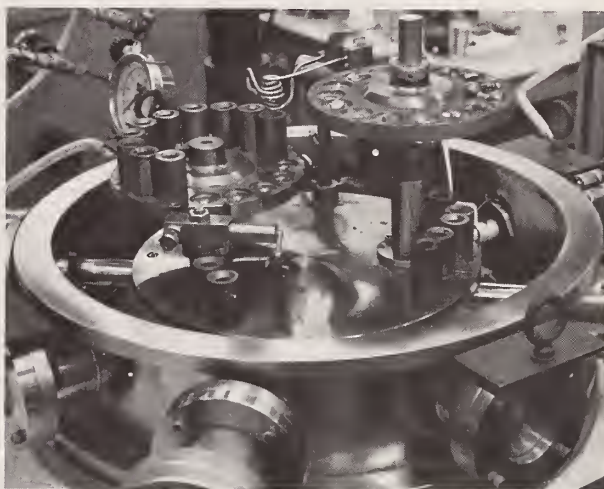
**Availability:** By research workers on problems of mutual interest with those of the Rheology and Mechanical Properties Section. Initial instruction will be given by the Section staff.

#### Literature:

- [1] J. E. McKinney and R. W. Penn, Rev. Sci. Instr. **43**, 1212;
- [2] J. E. McKinney and M. Goldstein, J. Res., Nat. Bur. Stand. (U.S.) **78A**, no. 3, 331-353 (May-June 1974).

**Contact:** John E. McKinney, Rheology Section, Polymer Building, Room B330, Phone 301-921-2116.

## HIGH TEMPERATURE FACILITIES



*Levitation vacuum melting equipment for preparation of high-purity materials in the ALLOY PREPARATION LABORATORY.*

## ALLOY PREPARATION LABORATORY

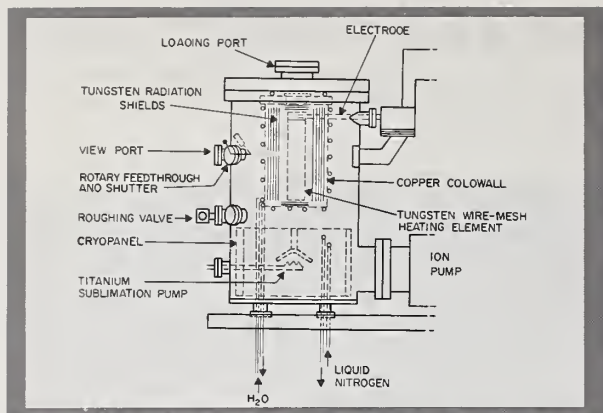
Research grade samples of metals and alloys are prepared when such samples are not readily available commercially, or when accurate details are required concerning the purity of the constituents and the melting and fabricating history.

**Capability:** Vacuum-induction melting and casting; arc furnace; levitation melting furnace; electron-beam zone refiner; electron-beam button melter; electron-beam evaporator; induction and resistance melting and casting furnaces; heat-treating furnaces; cold-working equipment for rolling, swaging, and drawing.

**Applications:** High purity iron ingot with  $1.194 \pm 0.004\%$  carbon; homogeneous ingot of magnesium-zinc; 200-mesh lead-indium powders.

**Literature:** NBS Tech. News Bull. Vol. 56 No. 8, p. 182-183 (Aug. 1972).

**Contact:** H. C. Burnett, Scientific Assistant, Metallurgy Division, Materials Building, Room B260, Phone 301-921-2813.



*Schematic of the HIGH TEMPERATURE CONTROLLED-ATMOSPHERE FURNACE, designed for testing thermocouples in high temperature gas environments.*

## HIGH-TEMPERATURE CONTROLLED-ATMOSPHERE FURNACE

The furnace provides the facility for establishing heated environments at a temperature in the range between 1000°C and 2750°C in vacuum. If high conductivity gas environments are required the upper temperature range is about 2500°C.

**Capability:** The furnace has a tungsten-mesh heating element 6.4 cm in diameter by 30.5 cm long, oriented with its central axis vertical. The heating element is surrounded by tungsten radiation shields formed from 0.125 mm thick tungsten sheet; these are enclosed within a water-cooled copper assembly. A 10-cm diameter port at the top of the vacuum chamber provides complete access to the interior of the heating element for installing materials and experimental devices for test. A viewing port on the side of the vacuum chamber is part of the optical path that extends to within the heater coil. At ambient temperatures, base pressures of less than  $5 \times 10^{-11}$  torr (6.66 nNm<sup>-2</sup>) may be achieved within 20 hours and the furnace is designed to produce hot zone temperatures to 3000 K while maintaining the pressure in the  $10^{-5}$  torr (1333 nNm<sup>-2</sup>) range. Equipment conventionally used with the furnace includes a residual gas analyzer and a photoelectric pyrometer.

**Applications:** Thus far the furnace has been used for investigating the behavior—stability and emf characteristics—of tungsten/rhenium alloy thermocouples.

**Availability:** To any qualified NBS research worker, after making availability arrangements and receiving training from Mr. George Burns, phone 301-921-2069. In appropriate instances arrangements might be made

for individual research workers from other Federal organizations to gain access to the facility. The furnace is currently in use for research over extended periods of time.

**Literature:** J. Res. Nat. Bur. Stand. (U.S.) Vol. 75C, No. 2, April-June 1971.

**Contact:** Dr. J. F. Schooley, Chief, Temperature Section, Physics Building, Room B222, Phone 301-921-2801.

## HIGH TEMPERATURE VAPORIZATION LABORATORY

This laboratory contains extensive facilities for the study of high-temperature vaporization equilibria and gas phase chemical reactions.

**Capabilities:** The laboratory is equipped to carry out measurements of vaporization equilibria at temperatures up to 3200K using both Langmuir and Knudsen methods. The laboratory is equipped for mass spectrometry, torsion effusion, and gravimetric (including vacuum microbalance) methods. A unique mass spectrometric sampling system has been developed to permit molecular beam sampling from high temperature gaseous or gas-solid systems at pressures exceeding one atmosphere, and other mass spectrometers are available for the study of heterogeneous reactions of solids with reactive gases at high temperatures.

**Applications:** The facilities of the laboratory have been or are being applied to investigation of a number of diverse high-temperature problems. These include measurements of vapor pressures and vaporization thermodynamics for metals, oxides, carbides, and other materials, as well as vapor-solid reaction studies related to the corrosion of refractories in aggressive environments. Investigations involving sampling of specific regions of flames are carried out to define basic flame chemistry and to study effects of flame extinguishants and retardants at the molecular level. Other applications include investigations of laser-induced chemical phenomena in the gas phase.

**Availability:** Because of the complexity of the instrumentation and prior programmatic commitments, direct use of the facility is limited to qualified members of the Section staff. The facility may be used indirectly through collaborative research agreements with other qualified NBS or guest scientists.

**Literature:** NBS Tech. News Bull. 56, 11, 271, January 1972.

**Contact:** Dr. T. D. Coyle, Chief, Inorganic Chemistry Section, Materials Building, Room A329, Phone 301-921-2847.

## INORGANIC GLASSES LABORATORY

This laboratory has facilities for the melting of experimental glasses at temperatures to 1600°C and for measuring the viscosity of glasses over the range from  $10^2$  to  $10^{15}$  poises ( $10$  to  $10^{14}$  Pa·s) at temperatures 1430 to 520°C.

**Capabilities:** A batch of 1000g of an experimental glass can be made using starting materials of known purity and doped with known amounts of trace elements. The melts are normally made in platinum crucibles heated in an electric furnace with silicon carbide elements, and stirred with platinum-10% rhodium stirrers to produce glasses having a high degree of homogeneity. Melts may also be made in ceramic crucibles if the glass composition is not compatible with platinum. After fining the molten glass is poured into a metal mold to form a test block, which is then placed in a muffle furnace to cool to room temperature in about 18 hours. From this block samples may be cut for property measurements. Specimens may also be cast into various shapes or drawn into rods, tubes, or fibers.

Viscosities in the range of  $10^2$  to  $10^{10}$  poises ( $10$  to  $10^9$  Pa·s) corresponding to a temperature range for soda-lime-silica glass from 1430 to 630°C, are measured by a rotating concentric cylinder apparatus. Higher viscosities, up to  $10^{15}$  poises ( $10^{14}$  Pa·s) at temperatures down to about 520°C for the soda-lime-silica glass, are measured primarily by fiber elongation procedures.

**Applications:** Production of small lots of optical glass. Synthesis of the glassy coal slag produced in magneto-hydrodynamic power cells, and measurement of its properties. Studies of softening, annealing, and strain points needed for control of viscosity in automatic machinery used to manufacture glass containers.

**Availability:** Because of the experience required, the use of the laboratory is limited to (a) permanent members of the Section and (b) qualified individuals working directly under the supervision of Inorganic Glass Section personnel. The facility may be used indirectly through cooperative or contractual research agreements.

### Literature:

- [1] Given W. Cleek and Edgar Hamilton, Properties of Barium Titanium Silicate Glasses,

J. Res. Nat. Bur. Stand. (U.S.) **57** [6] 317 (1956).

- [2] Albert Napolitano and Earl G. Hawkins, Viscosity of a Standard Soda-Lime-Silica Glass, J. Res. Nat. Bur. Stand. (U.S.) **68A** [5] 439 (1964).

- [3] Albert Napolitano, Pedro B. Macedo, and Earl G. Hawkins, A Wide-Range (up to  $10^{10}$ P) Rotating Cylinder Viscometer, J. Res. Nat. Bur. Stand. (U.S.) **69A** [5] 449 (1965).

**Contact:** Dr. W. Haller, Chief of Inorganic Glass Section, Inorganic Materials Division, Materials Building, Room B328, Phone 301-921-2819.

## LASER MATERIALS FACILITY

This well-characterized, high-power laser of neodymium-doped glass is used to produce data on the damage thresholds for laser materials.

**Capability:** The neodymium-doped glass laser consists of an oscillator and two amplifiers. The temporal and spatial properties of the laser beam are well controlled and characterized with precision. The oscillator operates in the TEM<sub>00</sub> mode with an aperture of about 2.5 mm in diameter. The spatial beam profile at 5 m from the oscillator approximates a Gaussian distribution. The output energy is reproducible to within  $\pm 2\%$ . The facility with one amplifier produces a minimum energy of 650 mJ. The facility with both amplifiers produces approximately 3 J with some deterioration of the beam quality.

The operating pulse width at half the maximum power and the wavelength are respectively 25 ns and 1060 nm. A frequency doubler is available to produce a 530 nm wavelength. A laser-triggered spark gap and Pockels cell are available for producing pulse widths as small as 2.5 ns. A dye cell is available for mode-locking.

**Applications:** This facility may be used to measure extrinsic and intrinsic bulk damage thresholds and surface damage thresholds. Whenever intrinsic damage arises from self-focusing, procedures exist for the identification of the dominant mechanisms, such as the thermal effect, electrostrictive effect, and Kerr effect. The facility also may be used to investigate two-photon absorption processes.

**Availability:** The availability of this facility depends upon mutual interest, the time required to make the measurements, and whether there are other commitments for its use. Because this facility is complex,

its use requires the presence and guidance of permanent members of the laboratory. A requesting party, who is qualified, may assist in taking the data.

#### Literature:

- [1] A. Feldman et al., ARPA-NBS Program of Research on High Temperature and Laser Materials, NBS Technical Note 703 (Dec. 1971).
- [2] A. Feldman et al., "Mechanisms for Self-Focusing in Optical Glasses," IEEE Journal of Quantum Electronics (Nov. 1973).

**Contact:** Dr. Herbert S. Bennett, Chief of the Solid State Materials Section, Room A259, Materials Building, Phone 301-921-2415.

## MILLISECOND HIGH-TEMPERATURE THERMOPHYSICAL MEASUREMENTS

This facility, which is unique of its kind in the world, allows the accurate measurement of selected thermophysical and related properties of electrically conducting solid substances at high temperatures (above 1500 K) in experiments of subsecond duration.

**Capability:** The method is based on rapid resistive self-heating of the specimen from room temperature to any desired high temperature (up to the melting point) in less than one second by the passage through it of electrical currents of several thousand amperes. Measurement and recording of experimental quantities are made automatically every 0.4 millisecond, with a full-scale signal resolution of one part in 8000. A high-speed pyrometer and a digital data acquisition system are employed.

**Applications:** The facility provides the capability of measuring, either simultaneously or consecutively, the following properties: specific heat, electrical resistivity, hemispherical total emittance, normal spectral emittance (at 650 nm), and melting point, in the temperature range from 1500 K to the melting point of the specimen. The facility, after some modifications, has the potential of measuring other thermodynamic and transport properties and extending the measurements to the liquid phase.

**Availability:** Because of the complexity of instrumentation, the direct use of this facility is limited to: (a) permanent members of the laboratory, and (b) qualified full-time guest scientists with appointments exceeding six months. The facility may be used indirectly through cooperative research agreements.

#### Literature:

- [1] A. Cezairliyan, M. S. Morse, H. A. Berman, and C. W. Beckett, J. Res. Nat. Bur. Stand. (U.S.), **74A**, 65 (1970).
- [2] A. Cezairliyan, J. Res. Nat. Bur. Stand. (U.S.), **75C**, 7 (1971).

**Contact:** Dr. Ared Cezairliyan, High-Speed Thermophysics Laboratory, Hazards Building, Room 124, Phone 301-921-3687.

## LOW PRESSURE FACILITY

### MERCURY MANOMETER

For this design of low-pressure manometer, end length standards are used to measure the height of the column of mercury that is supported by gas pressure. The locations of the large mercury menisci are reproduced by reestablishing the capacitance between the crowns and carefully located capacitance electrodes.

**Capability:** Optimum relative accuracy of a single pressure measurement within  $2 \times 10^{-6}$  for pressures between  $5 \times 10^3$  and  $1.3 \times 10^5$  Pa (4 cm to 1 m Hg), and for ratios of pressures that are in the same range. The relative error for lower pressures does not exceed  $1 \times 10^{-5}$  for pressures down to  $5 \times 10^2$  Pa (0.4 cm Hg). Both absolute and differential pressures can be measured.

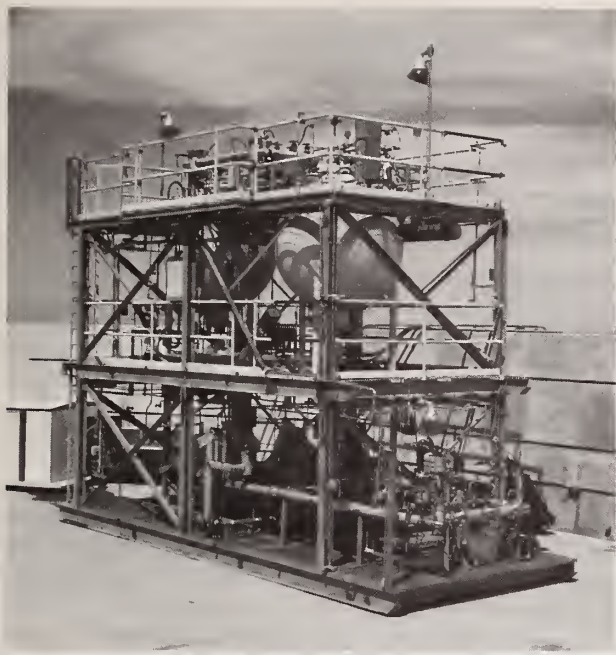
**Applications:** Determination of the pressure of fixed points for "benchmark" purposes; realization of a standard atmosphere; calibration of highest quality deadweight gages operating in the range of 1 atmosphere; calibration of ultraprecise manometers (such as ultrasonic mercury manometers, and perhaps diaphragm or quartz devices).

**Availability:** On a selective basis when not being used for gas thermometry. It is desired to make use of the facility so far as possible whenever the exceptional accuracy obtainable is essential. The instrument must be operated by project personnel.

#### Literature:

- [1] Metrologia **6**, 1 (1970).
- [2] NBS Tech. News Bull., March 1971, Vol. 55, No. 3, pages 73-75.

**Contact:** Dr. Leslie A. Guildner, Project Leader, Gas Thermometry, Room A05, Physics Building, Phone 301-921-2076.



*LIQUEFIED NATURAL GAS FLOW FACILITY. Insulated tanks with pumps, weighing system, and instrumentation for liquefied natural gas.*

## LOW TEMPERATURE FACILITIES

### ACOUSTICAL THERMOMETER

The instrument is a standing wave ultrasonic interferometer that operates at principally 1 megahertz. It is employed to determine values of temperature between 2 and 27 kelvins on the NBS P2-20 (1965) scale.

**Capability:** The instrument employs highly reproducible germanium resistance thermometers for indicating the constancy and reproducibility of temperatures. Isotherms of the speed of sound versus the pressure of  $^4\text{He}$  gas have indicated a reproducibility of data points that is within  $\pm 2$  millikelvins. The facility has operated at temperatures between 2.3 K and 27 K. Currently a laser interferometer is being installed to permit the measurement of acoustical wavelengths. Auxiliary equipment permits the potentiometric measurement and calibration of the resistance of germanium resistance thermometers.

**Applications:** Determination of absolute temperature values at low temperatures.

**Availability:** This facility is available at times when it is not being employed for the Temperature Section's research program.

#### Literature:

- [1] Metrologia, Vol. 2, No. 4, 18 (1966).
- [2] Cataland, G. and Plumb, H. H., Nat. Bur. Stand. (U.S.), Tech. Note 765, 23p (May 1973).

**Contact:** Dr. J. F. Schooley, Chief, Temperature Section, Physics Building, Room B222, Phone 301-921-2801.

## CRYOGENIC FLOW RESEARCH FACILITY

Facility provides continuous flow of liquid nitrogen with the ability to control flow rate, temperature, and pressure over wide ranges.

**Capability:** Flow rate is continuously variable for 1.3 to 13  $\ell/\text{s}$  (20 to 200 gpm). Normal temperature range is 72 to 90 K (129.6 to 162°R) which can be extended to 115 K (207°R). Normal pressure range is 0.22 to 0.77 MPa (32 to 112 psia) which can be extended to 2.15 MPa (312 psia). Temperature and pressure combinations are limited to the compressed liquid region for accurate flow rate determinations.

**Applications:** Flow measurement; heat transfer measurements in flowing fluids at cryogenic temperatures; calibration of flowmeters and transfer devices.

**Availability:** To qualified NBS and other Federal Government personnel. Facility operators will be provided.

#### Literature:

- [1] NBS Tech. News Bull., August 1970, Vol. 54, No. 8, pages 167-169.
- [2] NBS Tech. Note 606 "Cryogenic Flow Research Facility Provisional Accuracy Statement" July 1971.
- [3] J. A. Brennan, et al., Tech. Note 624, "An Evaluation of Several Cryogenic Turbine Flowmeters," Nat. Bur. Stand. (U.S.), Oct. 1972.

**Contact:** R. S. Collier, Act. Chief, Cryogenic Metrology Section, Cryogenics Building, Room 1108, NBS Boulder, Colo. 80302, Phone 303-499-1000 ext. 3333.

## HYDROGEN LIQUEFACTION FACILITY

The NBS hydrogen liquefier was first operated in March 1952. Since that time it has been used extensively as a liquefier and as a general facility for relatively large-scale low-temperature experiments requiring quantities of high pressure gas and purification equipment.

**Capabilities:** The facility contains compressors, vacuum pumps, gas holders, liquid nitrogen temperature silica gel purifiers and a liquefier containing an ortho to para hydrogen catalyst. The unit is capable of producing liquid hydrogen at the rate of 250 liters per hour. The gas flow rate is 750 standard cubic feet per minute (1300 m<sup>3</sup>/h) at approximately 2000 psi (13.6 x 10<sup>6</sup>Pa). The purifiers and the liquefier proper are contained in stainless steel high-vacuum insulated dewars 30 inches diameter by 93 inches long (0.76 m x 2.4 m).

**Applications:** The facility is applicable to large scale experiments requiring low temperatures combined with a gas flow and purification capability. Safety equipment allows the use of hydrogen. It is also possible to use gases such as helium and nitrogen.

**Availability:** Available to all NBS employees. Facility must be operated by qualified Cryogenics Division staff. Three months advance notice is necessary because of large number of on-going experiments in the building.

**Literature:** NBS Technical News Bulletin October 1953, Vol. 37, No. 10, pages 152-158.

**Contact:** Dr. R. H. Kropschot, Chief, Cryogenics Division, Cryogenics Building, Room 2006, NBS Boulder, Colo. 80302. Phone 303-499-1000 ext. 4108.

## LIQUEFIED NATURAL GAS FLOW FACILITY

The Flow Facility is located behind a protective barrier at the Mesa Test Site, Boulder, Colorado. This research facility allows the development of methodology for measurement of pressure, temperature, flow, density, and state of LNG. It also provides the opportunity to develop new methods of measurement for LNG where the unique characteristics of this fluid require advances in the state of the art.

**Capability:** The system consists of two vacuum-powder insulated tanks, vacuum insulated lines, valves, pump, pumping system, weigh system and gas analyzer.

Flow rates can be varied from 2.5 to 13 liters per second with pressures up to 0.69 MPa (100 psi). Tank gauging measurements can be made in the two insulated tanks. Gas analysis on both liquid and vapor can be performed.

**Applications:** Flow measurements; temperature and pressure measurements; liquid level measurements; calorimetric analysis of delivered gas mixtures.

**Availability:** To qualified NBS and other Federal Government personnel. Facility operators will be provided.

**Literature:** American Gas Association Pipeline Research Summary, 1970, pages 13-14; 1971, pages 12-13; 1972, pages 15-16.

**Contact:** R. S. Collier, Act. Chief, Cryogenic Metrology Section, Cryogenics Building, Room 1108, NBS Boulder, Colo. 80302, Phone 303-449-1000 ext. 3333.

## NUCLEAR ORIENTATION CRYOSTAT

This apparatus for the study of radioactive nuclei will cool paramagnetic salts or ferromagnetic materials to the few-millikelvin temperature range, in order to permit an ordering of the nuclear spins by hyperfine interactions. The angular distribution of radiations accompanying radioactive decay can then be used to study the decay process, the nuclear states involved, or the hyperfine interactions.

**Capability:** Elements difficult to orient otherwise can be implanted in ferromagnetic foils with an available high-resolution isotope separator. Beta particles, conversion electrons, or low energy gamma rays are observed with an internal counter with an energy resolution of less than 5 keV. Complex gamma-ray spectra can be studied with two external Ge(Li) detectors. A computer-based pulse height analysis system is used for simultaneous data reduction for the three detectors.

**Availability:** Cooperative research not in conflict with the present use of the system is invited on an individual basis.

**Literature:** A. T. Hirshfeld and D. D. Hoppes, Transition Mixing Ratios Determined from a Study of the Electron and Gamma-Ray Distributions from Oriented <sup>192</sup>Ir, Phys. Rev. **C2**, no. 6, 2341-9, Dec. 1970.

**Contact:** Dr. R. W. Hayward, Nuclear Spectroscopy Section, Radiation Physics Building, Room C112, Phone 301-921-2651.

# MACHINE TOOLS, NUMERICALLY CONTROLLED

## MACHINE TOOLS, NUMERICALLY CONTROLLED

Numerically controlled machine tools are finding wide application in industry, both on the production line with long runs and in the job shop on single intricate pieces. The units located in the National Bureau of Standards Instrument Shops Division are primarily used for the short-run or single-piece application. Computer-assisted programming speeds the preparation of tapes while providing capability for the generation of irregular, elliptic, and hyperbolic curves. On the machining center, the generation of patterns and their rotation and/or translation are easily accomplished.

**Machining Center:** This unit is a numerically controlled bed-type milling machine with an eight-station turret in which tools are mounted. Selection of these tools, as well as "on", "off", speeds, feeds, positioning, end and side milling, drilling, tapping, and boring cycles, are controlled through punched paper tape. Selection of inch/metric operation, mirror image, and EIA or ASCII(ISO) tape codes are accomplished by manual switches. Table travel of this machine is 20 inches by 40 inches. Vertical capacity of the machine is from 0 inch to 22 inches with 10 inches of this travel under tape control. The table travel offers linear and circular interpolation while the vertical travel is point-to-point. Instrument Shops Division at the Boulder Laboratories has a similar machining center and a single spindle machining center.

**Lathe:** The lathe is of the slant-bed type with an eight-station turret in which tools are mounted. It is a two-axis machine offering linear and circular interpolation. It has capability for turning, drilling, boring, threading, grooving, and knurling. All above features, as well as speeds and feeds, are controlled by punched paper tape. Inch/metric operation and EIA or ASCII tape code formats are selected by manual switches. Capacity of this machine is 10½ inches over the cross slide and longitudinal travel is 26 inches.

**Coordinate Measuring Machine:** A three-axis machine interfaced with a digital readout system, computer,

and a Teletype unit. Measuring range of the machine is 30 inches by 26 inches horizontal and 16 inches vertical. Accuracy within any horizontal plane is  $\pm 0.0002$  inch. Vertical axis accuracy is  $\pm 0.0002$  inch. A right-angle probe holder permits measuring details of vertical planes. Optical viewing screens and microscopes (not yet purchased by ISD) are available for non-contacting measurements.

**Contact:** Robert E. Lach, Shops Building, Room 136, Phone 301-921-2439.

# MECHANICAL MEASUREMENT FACILITIES

## DEADWEIGHT FORCE CALIBRATION MACHINES

These seven machines are the NBS standards for the calibration of precise force-measuring instruments such as proving rings, load cells, and other similar devices. The machines are not used for testing the strength of materials or for calibrating scales and other weighing equipment.

**Capability:** The machines apply specific calibration loads of high accuracy in the engineering units of the pound-force and in some cases, as noted in the table below, in units of the kilogram-force. The accuracy is better than 0.002 percent of load. The characteristics of the machines are as follows:

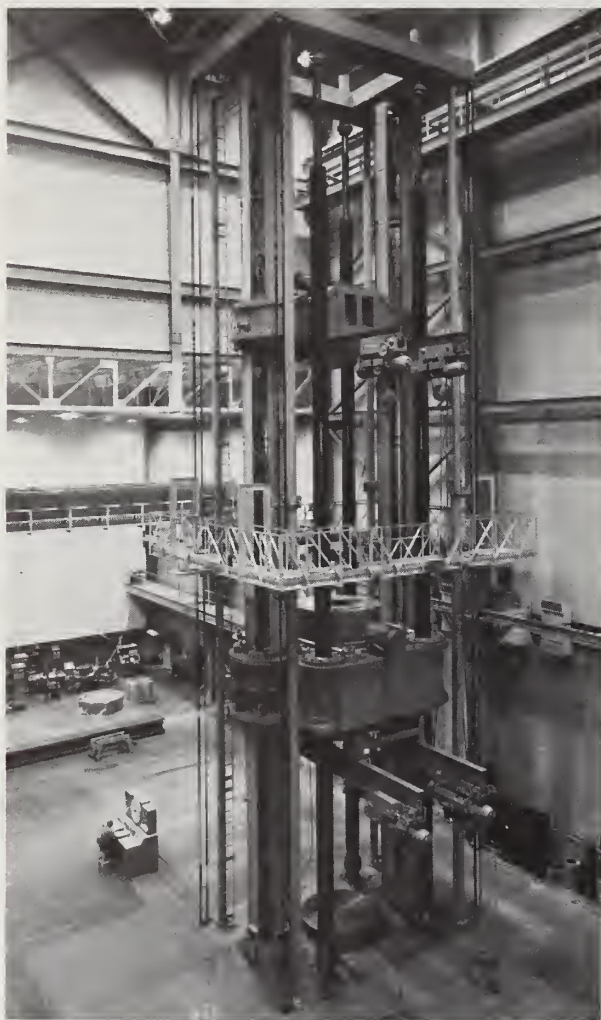
| Maximum load               | Minimum load         | Units of intermediate loads |
|----------------------------|----------------------|-----------------------------|
| 500 lbf                    | 10 lbf               | 5 lbf                       |
| 6100 lbf<br>(3050 kgf)     | 200 lbf<br>(100 kgf) | 100 lbf<br>(50 kgf)         |
| 25,300 lbf<br>(11,500 kgf) | 400 lbf<br>(500 kgf) | 100 lbf<br>(500 kgf)        |
| 112,000 lbf                | 300 lbf              | 1000 lbf                    |
| 300,000 lbf                | 10,000 lbf           | (note 1)                    |
| 1,000,000 lbf              | 50,000 lbf           | 50,000 lbf                  |

Note 1—Intermediate loads vary, 10,000 lbf, 20,000 lbf, and 30,000 lbf depending on range.

**Availability:** The machines are not available for shared use and are operated only by personnel of the Engineering Mechanics Section. Arrangements for the calibration of specific instruments on a fee basis can be made and scheduled according to current work loads.

**Literature:** "Research and Testing Facilities of the Engineering Mechanics Section, National Bureau of Standards, Washington, D. C." D. J. Chwirut, Nat. Bur. Stand. (U.S.) Spec. Pub. 370 (Jan. 1973).

**Contact:** Roscoe L. Bloss, Chief, Engineering Mechanics Section, Engineering Mechanics Building, Room 219, Phone 301-921-2621.



UNIVERSAL TESTING MACHINE, TWELVE MILLION POUND-FORCE.

## FLUID FLOW MEASUREMENT

Laboratory techniques provide precise measurement of the flux of fluid in a closed system, to permit calibration of meters for fluid quantity and flowrate, using air, water, and certain liquid hydrocarbons.

**Capabilities:** A liquid flowmeter calibrator is used for flow measurement of filtered and dried air supplied from a compressor at rates up to 2700 scfm (cu ft/min at 14.69 psia and 70°F). Air is fed through sonic nozzles in 2, 3, 4 or 6-inch meter runs at pressures up to 110 psig (758 kNm<sup>-2</sup>) through a special three-way ball valve to a tank of known volume. The mass rate of flow is computed from measurements of the collection time and of pressure and temperature after the air is accumulated in the known volume. Smaller flows, from 50 cm<sup>3</sup> min<sup>-1</sup> up to 50 scfm, are measured with piston-type or bell-type provers.

Flowrate of a liquid is measured by static or dynamic weighing the quantity accumulated during a known time interval. Rotation of the diverter valve controls fluid collection in a weigh tank, with a switching error less than 10 ms. Net weights are measured to within  $\pm 0.01$  percent on commercial lever balances or weighing scales. The counter timer is accurate to one part in 10<sup>6</sup>.

Calibration reports are based (usually) on ten separate observations taken in groups of five successive runs on each of two separate days. These reported values have an estimated overall uncertainty from  $\pm 0.13$  to  $\pm 0.25$  percent, depending on the sensitivity and repeatability of the system under test.

**Applications:** Calibration of flowmeters of either fixed restriction or moving element types, at rates from 0.03 to 10,000 gallons per minute ( $1.9 \times 10^{-6}$  to  $6.3 \times 10^{-1}$  m<sup>3</sup>/s) for water, and from 0.03 to 1000 gallons per minute for liquids such as aircraft fuels. Calibration of critical-flow nozzles and other types of meters for gaseous flow, over the range from 50 cm<sup>3</sup> min<sup>-1</sup> to 2700 scfm (1.5 kg/s).

**Availability:** Calibration services for Federal agencies, and for industrial or commercial laboratories in USA or abroad.

### Literature:

- [1] F. W. Ruegg and M. R. Shafer, Flow Measurement: Procedures and Facilities at National Bureau of Standards, ASHRAE Symposium, San Francisco, CA, Jan. 19-22, 1970.
- [2] Lief Olsen and G. P. Baumgarten, Gas Flow Measurement by Collection Time and Density in a Constant Volume, First Symposium on Flow, Pittsburgh, PA, 1971.

**Contact:** F. W. Ruegg, Chief of Fluid Meters Section, Fluid Mechanics Building, Room 111, Phone 301-921-3681.

## THREE-DIMENSIONAL PRECISION MEASUREMENT

In a numerically controlled machine tool, the cutters are positioned precisely by the digits on a punched paper tape, or often by direct computer control. The workpiece, instead of being removed from the machine for checking a single measurement, is inspected as a finished piece for the accuracy of all its dimensions and angles. This automated metrology facility is designed to meet the needs of such automated production.

**Capability:** A 3-axis measuring machine built to state-of-the-art specifications will be housed in a stabilized environment, and can be operated either manually or under full control from a programmed computer. It has a working volume of 48 × 24 × 12 inches with a 16-inch clearance under the bridge, and can detect a difference in length of 0.250nm (10 micro-inches), using a non-contacting sensor. Bulk disc storage of computer programs is provided, and a line printer capable of graphic presentation is available. Reference to the SI metre will eventually be provided by a stabilized laser interferometer.

**Applications:** Provides digital data on probe position in three dimensions, or two-dimensional graphic projection of complex three-dimensional shapes. Substitutes for the skilled handling of gage blocks, micrometer calipers, height gages, sine bars, straight edges, polygons, plug and ring gages, master gears, and thread wires.

**Availability:** To any NBS worker after minimal training. In appropriate instances, individual workers from other Federal organizations may gain access to the facility.

**Literature:** Simpson, J. A., Use of a microscope as a non-contacting microdisplacement device, Rev. Sci. Instr. 42, 1378 (1971)

**Contact:** Dr. J. A. Simpson, Deputy Chief, Optical Physics Division, Metrology Building, Room B322, Phone 301-921-2171.

## UNIVERSAL TESTING MACHINE, TWELVE MILLION POUND-FORCE

This hydraulically operated machine of 12-million pounds-force capacity, believed to be the largest in the world, was designed to test large structural components and to apply the forces needed to calibrate force measuring devices of large capacity.

**Capability:** The machine can apply axial force of 12,000,000 lbf in compression, 6,000,000 lbf in tension, and a transverse force of 4,000,000 lbf to a flexural member. Working space between the screw columns is 8 feet 4 inches, and the working surface of the main platen is 8 feet 4 inches by 15 feet. The reinforced concrete foundation includes a tie-down floor system with the following working strength values:

|   |  |
|---|--|
| Longitudinal bending moment<br>(over central 40 feet) | 12,500,000 lbf-ft<br>20,000,000 lbf-ft                   |
| Transverse bending moment<br>(over central 40 feet)   | 467,000 lbf-ft/ft of width<br>750,000 lbf-ft/ft of width |
| Uniform bearing                                       | 940 lbf/in <sup>2</sup>                                  |
| Tensile force on anchor bolts                         | 150,000 lbf/bolt   |

There are two hydraulic capsules in the sensitive crosshead, one providing the force measuring function and the other for preloading. Pressure transducers in a constant temperature oven on the crosshead provide signals to analog readout for force, strain, and displacement, and also to a digital readout calibrated to within ± 0.5 percent of the applied load. Both coarse and fine adjustment of power cylinder motion (5 feet max.) are provided from the control console.

**Applications:** Axial forces of 12,000,000 lbf can be applied to column sections or fabricated members with lengths up to 58 feet, or to elastic devices such as the load cells used to measure rocket thrust or rolling mill forces. To apply the full 6,000,000 lbf tension to eye bars, drill rod for undersea operations, large diameter wire rope, and the like, both threaded couplings and clevis fixtures are provided to take specimens up to 53 feet long. Transverse or flexural tests under 4,000,000 lbf load can be made on beams and similar structures with lengths up to 90 feet.

**Availability:** To be negotiated, for prearranged schedule not interfering with the work of the Section or with Government priorities. Other requestors must attest no competition with non-Government agencies.

**Literature:** A. F. Kirstein, Universal Testing Machine of 12-Million-lbf Capacity, Nat. Bur. Stand. (U.S.) Spec. Publ. 355 (Sept. 1971); NBS Tech. News Bull. 55, No. 11, p. 274-5 (Nov. 1971).

**Contact:** Roscoe L. Bloss, Chief of Engineering Mechanics Section, Engineering Mechanics Building, Room 219, Phone 301-921-2621.

## WIND TUNNEL FOR UNSTEADY FLOWS

This facility is designed for the study of unsteady conditions in low-speed aerodynamics.

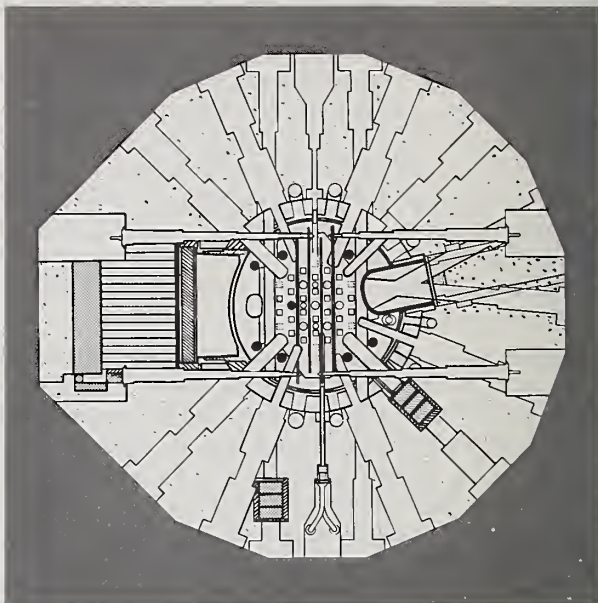
**Capabilities:** In two test sections, 4.5 feet square by 16 feet in length, each fitted with a set of continuously rotating shutters, oscillatory flows of air can be generated at mean speeds from nearly zero up to 45 feet per second. Provision is also made for simulating gusts and lulls of adjustable amplitude and frontal duration and for varying the intensity and scale of the free-stream turbulence. One set of rotating shutters lags the other by a quarter-turn to give more uniform loading on the fan. The flow can be oscillated sinusoidally at frequencies from 0.1 Hz to 25 Hz. The amplitude is limited to about 5 fps at 10 Hz but can be increased to 45 fps at 0.1 Hz. The "time-constant" for the overall facility is approximately 0.2 seconds.

**Applications:** Such important problems in unsteady aerodynamics as the dynamic response of various types of wind-speed instruments, the effect of wind loading on buildings and other structures under the action of a variable wind, unsteady heat transfer phenomena, and unsteady boundary layers may be investigated in this facility.

**Availability:** The direct use of this facility is limited to staff members of the Aerodynamics Section or qualified guest scientists. However, it may be used indirectly through cooperative or contractual research arrangements with other Government agencies or with private industrial organizations.

**Contact:** Philip S. Klebanoff, Chief of Aerodynamics Section, Fluid Mechanics Building, Room 105, Phone 301-921-3684.

## NUCLEAR REACTOR AND ASSOCIATED FACILITIES



NUCLEAR REACTOR. Plan view of the NBS reactor showing beam ports, pneumatic tubes, and vertical thimbles.

## NUCLEAR REACTOR

The NBS research reactor is a high-flux reactor designed for materials research and analysis. It operates around the clock at a power level of 10 MW, generating neutron fluxes averaging  $10^{14}$  neutrons per square centimeter per second.

**Capability:** The intense neutron flux makes possible a wide variety of experiments and investigations such as crystal structure determination, lattice dynamics measurements, phase transition studies, trace element analysis, radioisotope production, and radiation effects studies. The neutrons are made available through beam ports, pneumatic tubes, and in-core irradiation thimbles. The reactor facilities can be seen in the diagram and include:

- 9 radial beam ports
- 2 through beam ports
- 2 cold-source beam ports
- 1 thermal column
- 4 pneumatic tubes
- 7 vertical thimbles in the reflector
- 10 vertical thimbles in the core

**Availability:** All but one of the beam ports and several of the vertical thimbles already have experimental equipments installed. These facilities and their availability are described in the following pages. The remaining facilities listed above are available for suitable programs.

**Literature:** W. F. Sheely, *The NBS Reactor: Its Description and a Guide to Use by Experimenters*, NBS Rept. 9081 (1966).

**Contact:** Dr. Robert S. Carter, Chief of the Reactor Radiation Division, Reactor Building, Room A106, Phone (301) 921-2421.

## FILTERED NEUTRON BEAMS

Nearly monoenergetic neutrons with energies above ~100 keV can be readily produced with adequate yields in positive-ion accelerators, but there are no convenient accelerator sources of monoenergetic neutrons with energies below 100 keV. Much of the neutron dose, however, comes from neutrons in this energy range, and dosimetry development is severely hampered by the lack of test facilities.

**Capability:** Thick scandium, iron, or silicon filters placed in a through tube of the NBS reactor result in monoenergetic neutron beams of 2 keV, 25 keV, or 144 keV, respectively. Calculated intensities are in the range of  $10^6$  n/cm<sup>2</sup>·s, with very low gamma-ray background.

**Applications:** The NBS filtered beams will constitute a primary neutron source facility for neutrons of 2 keV, 25 keV, and 144 keV. This facility is to function as the point of reference for the development and maintenance of secondary source capabilities at satellite locations, as well as providing means for the evaluation and calibration of new types of dosimeters.

The filtered beams will also be used for cross section measurements, and fission physics measurements, which require a high-intensity, monoenergetic, "clean," continuous neutron beam.

**Availability:** Proposals are encouraged from NBS, other-agency, and university scientists.

### Literature:

NBS Reactor: Summary of Activities, Oct. 1971–Sept. 1972, Nat. Bur. Stand. (U.S.) Tech. Note 759 (Mar. 1973).

**Contacts:** Dr. Charles D. Bowman, Chief, Nuclear Sciences Division, Radiation Physics, Room B-117, phone (301) 921-2234.

## INTERMEDIATE-ENERGY STANDARD NEUTRON FIELD (ISNF)

This facility provides a primary standard neutron field with a smoothly varying energy spectrum that may be accurately calculated. The energy range of the neutron spectrum—95% of the spectrum is between 2 keV and 5 MeV—is just that of core neutrons in presently conceived U.S. fast breeder reactors. The system, which is operated in the thermal column of the NBS reactor, is one of several energy-distributed, fast-neutron fields developed by the NBS Neutron Standards Program.

**Capabilities:** The ISNF arrangement is fundamentally simple: a spherical cavity in graphite, a thin shell of <sup>10</sup>B mounted at the center, and fission source disks of <sup>235</sup>U placed around the periphery of the cavity. Fission neutrons returning from the graphite give rise to the ISNF field at the center of the cavity:

Total flux intensity ~10<sup>9</sup> n/cm<sup>2</sup>·s

Total fluence for 24 hour irradiation ~10<sup>14</sup> n/cm<sup>2</sup>

Uniformity of the field <2% variation over 4 cm

Initial accuracy of flux and spectrum ±5%

**Applications:** Two general kinds of applications are planned for the ISNF: (1) measurement of absolute and relative integral reaction rates for breeder reactor development; (2) calibration of various types of neutron detectors important for nuclear technology.

**Availability:** The ISNF facility will be operational late in 1974. Experiments by outside users will be an essential feature of the ISNF measurements program but they will require careful coordination and scheduling.

### Literature:

NBS Reactor: Summary of activities, Oct. 1971–Sept. 1972, Nat. Bur. Stand. (U.S.) Tech. Note 758 (Mar. 1973).

**Contact:** Dr. James A. Grundl, Neutron Standards Section, Reactor Building, Room A-120, phone (301) 921-2421.

## ISOTOPE SEPARATOR LABORATORY

Isotopic separations are produced by the combined action of an electric and a magnetic field on a stream of ions, which is sent through an electrostatic lens and a 90°-sector magnet to a dispersion and target chamber.

**Capability:** Potentials up to 90 kilovolts produce ion beam currents up to 100 microamperes. Sector electromagnet of 150-centimeter radius. Mass dispersion sufficient to separate all known isotopes. Target with temperature control. Collimating aperture and lens system adjusts shape of beam.

**Applications:** Preparation of isotopically pure substances, irradiation of materials, studies of nuclear structure, ion implantation in semiconductors, precise chemical sectioning of foils. Source material may vary from gaseous substance to metallic oxide, with contamination-free transport from radio-chemistry laboratory.

**Availability:** By prior arrangement.

**Literature:**

- [1] NBS Tech. News Bull. Nov. 1968, p. 239.
- [2] Landgrebe, A. R., Mann, W. B., and Schima, F. J. The Distribution of 70-kV Praseodymium Ions in Iron Foil and a Technique for Removing Thin Layers of Iron, *Int. J. Appl. Rad. and Isotopes*, 1970, **21**, pp. 169-171.

**Contact:** Dr. W. B. Mann, Deputy Chief, Applied Radiation Division, Radiation Physics Building, Room C118, Phone 301-921-2668.

## MONOENERGETIC NEUTRON BEAM FACILITIES

The through tubes of the NBS reactor permit the establishment of facilities for production of monoenergetic neutron beams in the keV region. Thick slugs of scandium, iron or silicon when inserted into the reactor through tubes block out all neutrons except those at a particular energy where the cross section is nearly zero. These energies are 2 keV for scandium, 25 for iron and 144 for silicon. These low cross sections, which are referred to as "windows," permit neutrons only of that energy to pass.

**Capability:**

Energy: 2, 25 and 144 keV  
Energy spread: 10%  
Intensity:  $10^{16}$  n/cm<sup>2</sup>·s (continuous beam)  
Experimental locations: two  
Gamma ray background: very small owing to filter's atomic absorption

**Applications:** Calibration of neutron dosimeters in the keV range, measurement of standard neutron cross sections in intense continuous beams, keV neutron capture, gamma ray spectroscopy, keV fission physics.

**Availability:** Beam time is available to NBS staff, other agency and university users, industrial users, and guest workers. Operation only by qualified Division personnel under the direction of Dr. A. R. Schwartz or Dr. I. Schroder.

**Contact:** Dr. C. D. Bowman, Chief of Nuclear Sciences Division, Radiation Physics Building, Room B117, Phone 301-921-2234.

## NEUTRON DIFFRACTOMETERS

These facilities at the NBS reactor include 4 two-axis neutron diffractometers for elastic scattering and crystal structure studies, and 3 three-axis neutron diffractometers for inelastic scattering studies. All instruments are computer controlled, and software is available for a wide variety of experimental procedures.

**Capability:** Two of the two-axis diffractometers are equipped with full-circle goniometers for collecting three-dimensional neutron diffraction data from single crystals. Incident wavelengths are from 1.0 to 1.25Å, and the limiting scattering angle is from 100° to 110°. The other two are suitable for diffraction measurements from polycrystalline or amorphous solids, liquids, and single crystals when the necessary information can be derived from measurements in a single zone. Incident wavelengths are variable from 0.9Å to 2.5Å, and the limiting scattering angles are up to 120°. The three-axis diffractometers can measure both quasielastically and inelastically scattered neutrons. The incident energy can be varied from 4 to 100 meV, and energy changes can be measured from 0.5 meV to 100 meV. Cryostats are available to provide sample temperatures from 4K to 300K. Some high-temperature sample furnaces are also available. All data are collected by computer control, and basic reduction is also performed by the computer.

**Applications:** Two-axis diffractometers are used in studies of the structure of crystals, glasses, and simple liquids. They are particularly suitable for studies of compounds containing hydrogen, compounds with atoms having very similar or widely different atomic numbers, and magnetic materials. Three-axis spectrometers are used in studies of crystal and molecular vibrations, and molecular reorientation and hydrogen diffusion in solids.

**Availability:** Instrument time can be scheduled for appropriate experiments or projects of NBS staff after the proposed measurements are reviewed by the Users Committee for these facilities. Outside users can also be accommodated, depending on the type of measurements and the available resources.

#### Literature:

NBS Reactor: Summary of Activities, Oct. 1971-Sept. 1972, Nat. Bur. Stand. (U.S.) Tech. Note 758 (Mar. 1973).

**Contact:** Dr. John J. Rush, Chief of Neutron Solid State Physics Section, Reactor Building, Room A126, Phone 301-921-3634.



NUCLEAR IRRADIATION FACILITIES. Samples are loaded into pneumatic tubes for transport into the reactor.

## NEUTRON RADIOGRAPHY FACILITY

Neutron radiography may display contrasts unobtainable by x-radiography because of the varying attenuation characteristics for the elements, the differences in neutron attenuation between isotopes, and the capability of neutron detection in high gamma-ray intensities.

**Capability:** A well-moderated neutron beam has been extracted from the reactor thermal column for neutron radiographic use. The beam covers a detector area of 12.5 cm diameter with a thermal neutron intensity that can be varied from  $5 \times 10^{11} \text{ n/cm}^2 \cdot \text{s}$  to  $2 \times 10^{10} \text{ n/cm}^2 \cdot \text{s}$ , with a cadmium ratio [0.5 mm cadmium cover on gold] of about 600. The beam divergence characteristics can be changed quickly to provide L/D (length to neutron aperture diameter) ratios from about 180 (at the lower neutron intensity) to about 30. The gamma radiation intensity in the beam is in the order of 2 röntgen per hour, sufficiently low that direct film techniques can be used for detection. Detectors available with this facility include direct methods (convertors include gadolinium metal and scintillators) with films that provide radiographs with total exposures from  $5 \times 10^{-3} \text{ n/cm}^2$

to  $10^{11} \text{ n/cm}^2$ , activation transfer detectors (indium, dysprosium, gold), track-etch plastics, and a neutron image intensifier-television system. The latter system provides images at a rate of 30 frames per second and permits object motion to be followed. The best spatial resolution of the radiographs is in the order of  $10 \mu\text{m}$  for high contrast objects. A darkroom for processing radiographs is available at the Reactor.

**Applications:** With neutrons one can readily observe materials containing hydrogen, lithium, boron, cadmium or several rare earths in combination with other materials, even dense metals. Therefore, examinations of adhesives, fluids, explosives, plastics, or hydriding in metals becomes feasible, as does examination of items such as boron filament composites or cadmium plating. Isotopic sensitivity permits, as examples, differentiation between hydrogen and deuterium,  $^{235}\text{U}$  and  $^{238}\text{U}$ , or between  $^{113}\text{Cd}$  and other cadmium isotopes. In addition, the fact that neutron images can be made by gamma-ray insensitive techniques leads to inspection capability for radioactive materials.

**Availability:** Instrument time can be scheduled for appropriate experiments or projects of NBS staff after the proposed measurements are reviewed by the User's Committee for these facilities. Outside users can also be accommodated depending on the type of measurements and available resources.

#### Literature:

NBS Reactor: Summary of Activities, Oct. 1971-Sept. 1972, Nat. Bur. Stand. (U.S.) Tech. Note 758 (Mar. 1973).

**Contact:** Mr. Harold Berger, Reactor Radiation Division, Reactor Building, Room A-128, phone 301-921-3634.

## NEUTRON SCATTERING SPECTROMETER

A double-crystal small-angle scattering spectrometer is available at the NBS reactor to measure the neutron scattering from inhomogeneities in materials.

**Capability:** Using nearly perfect silicon crystals, the range of angular observation (3 seconds to 6 degrees of arc) allows measurement of diffraction from "particles" of sizes ranging from about 10 to  $10,000 \text{ \AA}$ . Exploiting this high angular resolution is most appropriate when the correlations persist over distances of micrometres; for shorter-range correlations the resolution can be broadened by substituting matched pairs of crystals with larger mosaic spread, thereby

greatly enhancing the beam intensity. The wavelength of neutrons used in this spectrometer can be varied from 1.5Å to 4.0Å in order to optimize the resolution with the sample attenuation characteristics.

**Applications:** This spectrometer has applications in the determination of shape, size and interaction of macromolecules as well as similar properties of defects in materials, magnetic correlations at extended distances, and density fluctuations near the critical point of phase transitions. Neutron small-angle scattering has particular application to submicroscopic particles of low population densities, where light and x-ray scattering suffer from absorption and poor resolution.

**Availability:** Instrument time can be scheduled for appropriate experiments of projects of NBS staff, after the proposed measurements are reviewed by the Users Committee for these facilities. Outside users can also be accommodated depending on the type of measurements and the available resources.

**Literature:**

NBS Reactor: Summary of Activities, Oct. 1971-Sept. 1972, Nat. Bur. Stand. (U.S.) Tech. Note 758 (Mar. 1973).

**Contact:** Dr. Robert Carter, Chief, Reactor Radiation Division, Materials Building, Room A106, phone 301-921-2421.

## NUCLEAR IRRADIATION FACILITIES

**Capability:** An extensive number of well-characterized irradiation facilities offer a wide range of neutron and/or gamma environments to levels exceeding  $10^{14}$  neutrons per square centimeter per second. These include five distinct pneumatic facilities, eleven in-core vertical thimbles with inside diameters up to 3½ inches, and seven vertical reflector thimbles with 4½ inch openings. These facilities are used simultaneously and can accommodate tens of thousands of samples a year.

**Applications:** Most common use is in neutron activation analysis for detection of trace elements in parts per million, billion, or trillion. Other uses include preparation of isotopes for tracer work, preparation of isotopes for medicine, production of gamma and positron sources, studies of radiation damage, and the characterization of standard reference materials.

**Availability:** All facilities are available to qualified scientists. Each sample to be irradiated must be ac-

companied by an irradiation proposal form for safety review. The packaging of each sample must be approved by the staff of the Reactor Operations Section, who can also provide guidance in the preparation of the irradiation proposals.

**Literature:** W. F. Sheely, The NBS Reactor: Its Description and a Guide to Its Use by Experimenters, NBS Rept. 9081 (1966).

**Contact:** Tawfik M. Raby, Deputy Chief, Reactor Radiation Division, Reactor Building, Room A137, Phone 301-921-2523.

## TIME-OF-FLIGHT NEUTRON SPECTROMETERS

This instrumentation utilizes either crystal monochromators or phased-choppers to select monoenergetic neutrons, which are scattered by a sample and detected 2.5 to 3.8 metres away by multiple neutron detectors at scattering angles between 10° and 105°. The energy of the scattered neutrons is determined by time-of-flight analysis.

**Capability:** The spectrometers provide incident neutron beams ranging in energy between 3 meV ( $25 \text{ cm}^{-1}$ ) and 100 meV ( $800 \text{ cm}^{-1}$ ) and cover a spectral range for inelastic scattering of 0.5 meV to 100 meV ( $4$  to  $800 \text{ cm}^{-1}$ ). The available resolution varies from 0.2 meV (at the lowest energies) to 5 meV. The range of momentum transfers ( $Q$ ) for elastic scattering is from  $0.2 \text{ Å}^{-1}$  to  $10 \text{ Å}^{-1}$ . The time-of-flight data collection is automatic, utilizing either a multichannel analyzer or a small computer. The spectrum is continuously observable on a scope and the data can be printed out on paper tape or on a typewriter. A specially designed sample cryostat is available for spectrum measurements on solid and liquid samples between 5 and 300K.

**Applications:** The spectrometers can be used widely in the study of the dynamics of liquids and solids. Some applications include the study of crystal and molecular dynamics of solids, vibrational spectra of glasses, hydrogen diffusion in metals, orientational disorder and relaxation processes in polymers and molecular crystals, and the dynamics of liquids.

**Availability:** Instrument time can be scheduled for appropriate experiments or projects of NBS staff after the proposed measurements are reviewed by the Users Committee for these facilities. Outside users can also be accommodated depending on the type of measurements and available resources.

**Literature:**

NBS Reactor: Summary of Activities, Oct. 1971-Sept. 1972, Nat. Bur. Stand. (U.S.) Tech. Note 758 (Mar. 1973).

**Contact:** Dr. R. S. Carter, Chief, Reactor Radiation Division, Reactor Building, Room A106, Phone 301-921-2421.

## RADIO STATIONS



*Transmitter buildings and antennas of WWVL, WWVB, and WWV at Fort Collins, Colorado.*

## RADIOACTIVE SOURCE

### COBALT-60 IRRADIATION FACILITY

**Capabilities:** The facility consists of twelve rods containing  $^{60}\text{Co}$  mounted in a circle on a plate at the bottom of a water pool 10 feet deep. The dose rates available range from about  $2 \times 10^6$  rad/h (in carbon) at the center of the source array to about  $2 \times 10^3$  rad/h near the edge of the mounting plate as of February 1974; these values decrease by about 10% per year. Samples as large as 5 cm high by 5 cm in diameter can be given reasonably uniform doses at the center position of the source array. Samples may be irradiated under various atmospheric conditions and over a wide range of temperatures.

**Applications:** This facility may be used to study the effects of gamma radiation on various materials such as polymers and electronic components. It may also be used as a standard calibration source for calibrating different types of radiation dosimeters such as thin polymer dye films.

**Availability:** Generally available to NBS personnel or qualified guest scientists on a scheduled basis.

**Contact:** J. C. Humphreys, Applied Radiation Division, Room C216, Radiation Physics Building, phone 301-921-2201.

### WWVL VLF BROADCAST STATION

WWVL is an experimental very-low-frequency (VLF) radio station located on the same Ft. Collins, Colorado, site as radio stations WWV and WWVB. Prior to July 1, 1972, it was operated by the Time and Frequency Division on a regularly scheduled basis to provide stable and accurate frequencies and timing information referenced to the NBS primary standards. Various combinations of 1-3 timeshared carrier frequencies were transmitted in the region of 20 kHz. Regular scheduled broadcasts were terminated as of July 1, 1972.

**Capability:** Approximately 2 kW radiated power; multiple carrier frequencies (timeshared) in the region of 20 kHz; carrier frequencies and phases can be controlled relative to NBS primary standards.

**Applications:** Propagation research at VLF; frequency and time dissemination via multiple VLF carriers.

**Availability:** Operation of the WWVL facility is the responsibility of the full-time Ft. Collins field site staff. Installation, maintenance, and monitoring of any special equipment involved in special experiments by other government agencies must be arranged with Mr. Vierzicke or the Engineer in Charge at Ft. Collins, Mr. J. Stanley.

**Contact:** P. Vierzicke, Chief, Frequency-Time Broadcast Services Section, Radio Building, Room 4030, NBS Boulder, Colo. 80302. Phone 303-499-1000 ext. 3453.

## SPECIAL ANNOUNCEMENTS ON WWV/WWVH

Radio stations WWV in Ft. Collins, Colorado, and WWVH in Kekaha, Kauai, Hawaii, are operated by the Time and Frequency Division of NBS for the dissemination of standard frequency and time information. Transmissions are on a continuous basis, simultaneously on 2.5, 5, 10, 15, and 20 MHz from both stations. In addition, WWV also transmits at 25 MHz. Essentially worldwide coverage is achieved.

**Capability:** In addition to the primary time and frequency information provided, the WWV and WWVH formats include 45-second segments every other minute, most of which can be made available on a subscription basis to other government agencies for dissemination of official and public service information. Each prerecorded voice announcement will be repeated once per hour and will appear on all transmitted frequencies. A wide variety of commercial receivers are readily available that provide adequate reception.

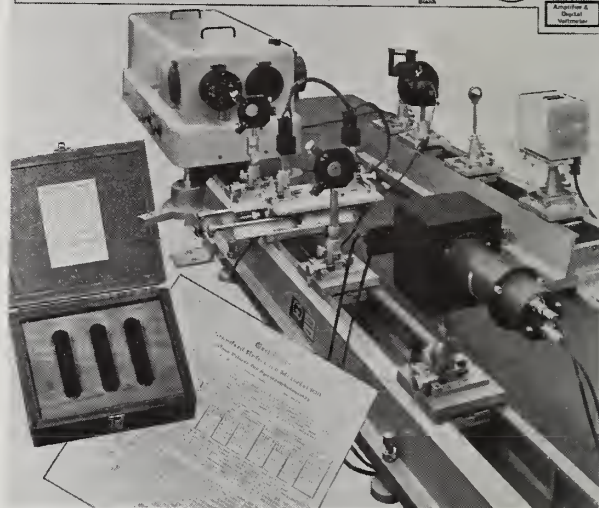
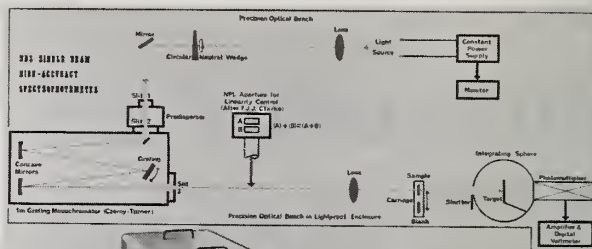
**Applications:** Presently, voice announcements have been arranged for marine weather advisories by NOAA, gealert messages by NOAA, radio propagation forecasts by the Office of Telecommunications, and Skylab-related information by NOAA. Decisions regarding suitability of proposed announcements for inclusion in the WWV/WWVH format will be the responsibility of NBS.

**Availability:** All segments except those reserved for NBS use, the semi-silent period, and those presently in use by other agencies are available. The content of all announcements accepted for inclusion in the broadcast formats will be the responsibility of the sponsoring agency and must be transmitted to the Ft. Collins or Hawaii sites by teletype or other suitable means. The permanent station staff will be responsible for prerecording the information supplied (if necessary) and for arranging for broadcast of the information at the proper times. Provisions can be made for a reasonable frequency of updating of the material broadcast.

**Literature:** NBS Frequency and Time Broadcast Services, Vieszicke, P. O., Nat. Bur. Stand. (U. S.) Spec. Publ. 236 (May 1973).

**Contact:** P. Vieszicke, Chief, Frequency-Time Broadcast Services Section, Radio Building, Room 4030, NBS Boulder, Colo. 80302. Phone 404-499-1000 ext. 3453.

## SPECTROSCOPY FACILITIES



ANALYTICAL SPECTROPHOTOMETER.

## ANALYTICAL SPECTROPHOTOMETER

This high-accuracy spectrophotometer, with good sensitivity and linearity, will check the photometric scale accuracy of the transmittance of either solid or liquid filters used in commercial spectrophotometers.

**Capability:** The single-beam spectrophotometer is capable of measuring transmittance (T) values on solid and liquid materials to within an uncertainty of one part in  $10^4$  T units. It consists of a constant radiation source (stability 7 parts in  $10^5$ ), a double monochromator, adequate sample holders (one being automated through computer interfacing), and an averaging sphere with photomultiplier tube assembly. The latter is connected to a digital voltmeter; data acquisition and presentation is performed in a computer.

**Applications:** Spectrophotometric (colorimetric) analysis is the predominant technique for biochemical ex-

amination of various body fluids and solids, and for other measurements involving health problems. This instrument is used to certify colored glass filters (SRM 930) between 300 and 700 nm, at three transmittance levels to within an uncertainty of one part in  $10^4$  T units. Ampoules containing solutions (SRM 931) are particularly designed to be used in conjunction with flow-type spectrophotometers in both visible and ultraviolet regions. These SRM's were developed to meet the particular needs expressed by clinical chemists organizations. The technique is also widely used for environmental studies of smog, stack emissions, stream pollutants, and atmospheric contaminants.

**Availability:** Only limited time is presently available for other agencies, because of the SRM certification program, research on stable materials, reproducible methods for transmittance measurements, spectral bandwidth and stray light determinations.

#### Literature:

- [1] R. Mavrodineanu, NBS J. Res. **76A**, No. 5, 405-425 (Sept.-Oct. 1972); NBS Tech. News Bull. **56**, No. 7, pages 166-167 (July 1972).
- [2] R. Mavrodineanu, Spectrophotometry Instrument Development, NBS Tech. Note 584, pp. 9-21, (June 1971).
- [3] R. N. Rand, Practical Photometric Standards, Clinical Chemistry **15**, 839-863 (September 1969).

**Contact:** Dr. Oscar Menis, Chief, Spectrochemical Analysis Section, Room B224, Chemistry Building, phone 301-921-2175.

## CONCAVE GRATING SPECTROGRAPHS, 10.7m

The Spectroscopy Section has three 10.7-m concave grating spectrographs for use in different portions of the photographic region:

1. About 200 to 900 Å—air region, normal incidence
2. About 450 to 2500 Å—vacuum ultraviolet region, normal incidence
3. About 75 to 600 Å—vacuum ultraviolet region, grazing incidence at  $10^\circ$ .

These instruments can be used for the photographic recording of all types of atomic and molecular spectra.

**Capability:** The 10.7-m concave gratings with 1200 grooves/mm give resolving powers of over 150,000 and plate factors of about 0.77 Å/mm in the first

spectral order of the normal incidence instruments. The plate factor of the grazing incidence spectrograph varies from 0.17 Å/mm at 70 Å to 0.32 Å/mm at 600 Å.

**Applications:** These spectrographs have been used in conjunction with mild discharge light sources for the photographic recording of the spectra of neutral and single ionized spectra of a wide variety of elements, and in conjunction with spark discharges for the similar acquisition of highly-ionized spectra.

**Availability:** To any qualified research worker. In the immediate past, guests from Kitt Peak, Naval Research Laboratory, Canada, The Netherlands, and France, have used the spectrographs.

**Contact:** Dr. William C. Martin, Jr., Chief of Spectroscopy Section, Physics Building, Room A167, Phone 301-921-2011.

## CZERNY-TURNER HIGH DISPERSION SPECTROGRAPH

This is a high resolution, high dispersion, stigmatic, plane grating spectrograph. The grating is  $220 \times 135$ -mm, has 300 grooves/mm, and is blazed at  $63^\circ 26'$  ( $6\mu\text{m}$ ). It is used in the fifth to the thirtieth order. A predisperser used in conjunction with this spectrograph separates or eliminates overlapping orders.

**Capability:** The resolving power of the instrument is about 700,000 at 4000 Å (fifteenth order). The plate factor is about  $3.6/n$  Å/mm ( $n$  = order number). The instrument can be used from 2000 to 12000 Å.

**Applications:** This instrument has been used for a wide variety of atomic and molecular spectroscopic studies for which high resolution was necessary. The stigmatic property of the spectrograph is useful for spectral separation in types of discharges where different ions are excited in different areas. It can be used for cross-dispersion with interferometers.

**Availability:** To any qualified research worker. In the immediate past, guests from Kitt Peak, Naval Research Laboratory, Canada, The Netherlands, and France, have used the spectrograph.

#### Literature:

- [1] J. Reader, L. C. Marquet, and S. P. Davis, Predisperser for high-resolution grating spectrographs, Appl. Optics, **2**, 963 (Sept. 1963).
- [2] J. Reader, Optimizing Czerny-Turner Spectro-

graphs, *J. Opt. Soc. Amer.* **59**, no. 9, 1189-1196 (Sept. 1969).

**Contact:** Dr. William C. Martin, Jr., Chief of Spectroscopy Section, Physics Building, Room A167, Phone 301-921-2011.

## ELECTRON ENERGY LOSS SPECTROMETERS FOR GASES

Three state-of-the-art electron energy loss spectrometers allow measurements of the energy loss spectra of gases with an energy resolution of 15 to 50 milli-electron volt with incident energies from threshold to several hundred electron volts.

**Capabilities:** Energy loss spectra of gases. Excitation functions near threshold. Analysis of gas mixtures. The spectrometers are controlled and data taken by an Interdata 70 computer. Computer programs for gas analysis and for plotting of data are available.

**Availability:** Because of the complexity of instrumentation, the direct use of these spectrometers is limited to: (a) permanent members of the laboratory; and (b) qualified full-time guest scientists with appointments exceeding six months. The spectrometers may be used indirectly through cooperative or contractual research agreements.

### Literature:

- [1] R. Celotta, S. R. Mielczarek, and C. E. Kuyatt, NBS Report 10 915 (September 1972).
- [2] N. Swanson, C. E. Kuyatt, J. W. Cooper and M. Krauss, *Phys. Rev. Letters* **28**, 948 (1972).
- [3] G. E. Chamberlain, S. R. Mielczarek and C. E. Kuyatt, *Phys. Rev. A* **2**, 1905 (1970).

**Contact:** Dr. Chris E. Kuyatt, Chief, Surface and Electron Physics Section, Metrology Building, Room B214, Phone 301-921-2051.

## FAR INFRARED SPECTROSCOPY

Far infrared spectroscopy studies the absorption, transmission or reflection of long wavelength,  $1000\mu$  to  $10\mu$  ( $10^6$  —  $10^4$ nm), electromagnetic radiation which is caused by vibrations, rotations, and translations which modulate the dipole moment of the atoms and molecules in the sample. It is a useful tool for the identification of molecular or ionic species in the liquid, solid, and gaseous states.

**Capability:** The techniques of Fourier transform spectroscopy are applied in the far infrared instrument. The range of  $10$  —  $1000\text{ cm}^{-1}$  can be measured with a resolution of  $0.5\text{ cm}^{-1}$ . The radiation detector is a triglycine sulfate (TGS) pyroelectric crystal. The Michelson interferometer employs a high precision air bearing translator, and a He-Ne laser is used for distance measurement. Data output is typically graphical and is processed by an on-line computer which also serves to control the instrument throughout the experiment. Specimens can be studied by transmission or reflection as is necessary. Facilities are provided for sample temperature variation between 10 K and 300 K and for matrix isolation.

**Applications:** Molecular and crystal dynamics as displayed by translational, rotational, librational and vibrational degrees of freedom are measured as a function of parameters such as temperature, pressure, stoichiometric relations, electric or magnetic fields, concentration and phase. Typical applications involve the spectra of matrix isolated free radicals and molecules, lattice and molecular dynamics of polymers, phase transitions in solids (including melting), studies of isomerism, vibrational and rotational studies in gases, investigation of stoichiometry in crystals and disordered solids, and measurements of chemical reaction products.

**Availability:** The instrument is available to qualified research workers, following a training period in its use. Proposed research projects require the approval of the instrument manager, or in special cases, of the users committee.

### Literature:

- [1] G. Horlick, *Appl. Spectrosc.* **22**, 617 (1968).
- [2] P. R. Griffiths, C. T. Foskett, and R. Curbelo, *Appl. Spectrosc. Revs.* **6**, 31 (1972).

**Contact:** Dr. Marilyn E. Jacox, Act. Chief, Photochemistry Section, Chemistry Building, Room A243, Phone 301-921-2754.

## FLAME EMISSION SPECTROMETER WITH REPETITIVE OPTICAL SCANNING

Repetitive optical scanning for flame emission spectrometry provides a unique way of minimizing spectral interferences in matrices and flame gases. By measuring the second derivative of the output intensity, a small signal from an atomic emission line can be readily discerned from a very large continuum. This is especially useful when dealing with the high

temperature flames and plasmas which are needed to excite the more refractory elements. At the same time this technique requires a minimum of sample.

**Capabilities:** The instrument provides the capability of quantitative measurements at the parts per million level or less for thirty elements in a large variety of matrices with a precision of 0.2 to 5 percent. For many of these analyses only 50  $\mu$ l of solution is necessary per analysis.

**Application:** This instrument is presently being used to characterize many of the trace elements in Standard Reference Materials and other related materials. Typical examples include Li, Na, K and Ca in serum, liver, orchard leaves, fertilizer and clays; Ca, Sr and Ba in steels; Al in high purity steel and phosphate rock; Li in both fresh and sea water; Zr, La and Sr in optical quality glass; Ni and Co in steels and ores; Gd in calcium fluoride; Pd and Ru in alloys and Tl in organic compounds.

**Availability:** To any qualified research worker, but because of the complexity of the instrument and safety in the handling of high temperature flames and plasmas, the operation of the facility is limited to permanent members of the Spectrochemical Analysis Section.

#### Literature:

- [1] W. Snelleman, T. C. Rains, K. W. Yee, H. D. Cook, and O. Menis, Flame emission spectrometry with repetitive optical scanning in the derivative mode, *Anal. Chem.*, **42**, 394 (1970).
- [2] O. Menis, editor, Flame emission and atomic absorption spectrometry, NBS Technical Note 504 (1969), pp. 1-8.
- [3] O. Menis and J. I. Shultz, editors, Analytical flame spectroscopy, NBS Technical Note 544, (1970), pp. 58-86.

**Contact:** Theodore C. Rains, Spectrochemical Analysis Section, Chemistry Building, Room B221, Phone 301-921-2142.

## FLASH PHOTOLYSIS RESONANCE FLUORESCENCE APPARATUS

Fluorescence measuring techniques have proven to be quite sensitive and versatile for the detection and monitoring of many short-lived species. The existing

NBS facility for the production and subsequent kinetic detection of reactive atomic and free radical species incorporates such fluorescence techniques and is the precursor of several similar pieces of apparatus in chemical laboratories throughout the world.

**Capability:** Gas mixtures of an atom or free-radical source compound, reactant substrate, and inert diluent (from 1 torr to 1 atm in total pressure) are subjected to a flash pulse (electrical discharge or laser). The atoms or free radicals photolytically produced are subjected to the cw radiation of a microwave resonance flow lamp or the delayed pulsed radiation of a suitable laser. The scattered radiation is subsequently monitored as a function of time to obtain the kinetic history of the reactive species. Experiments can be conducted at temperatures ranging from 200 to 500 K.

**Applicability:** The technique is presently suited for the study of chemical dynamics of systems involving H, O, N, S, Cl, C, and Br atoms as well as OH radicals. With suitable resonance lamp development, the technique can be extended to numerous other reactive species. The range of experimental conditions overlaps those desired for investigations involving air pollution, combustion processes, planetary atmosphere, chemical laser systems, etc.

**Availability:** The apparatus is presently being used full-time for chemical kinetics studies of atmospheric interest. Outside use is consequently restricted to short-term problems suitable for study on a cooperative basis.

#### Literature:

- [1] E. L. Baardsen and R. W. Terhune, *Appl. Phys. Lett.* **21**, 209, (1972).
- [2] M. J. Kurylo, *J. Phys. Chem.* **76**, 3518 (1972).
- [3] F. Stuhl and H. Niki, *J. Chem. Phys.* **57**, 3671 and 3677 (1972).

**Contact:** Dr. Michael J. Kurylo, Photochemistry Section, Chemistry Building, Room A253. Phone 301-921-2080.

## FOURIER TRANSFORM NUCLEAR MAGNETIC RESONANCE SPECTROMETER

This high-resolution instrument utilizes the magnetic moment of  $^{13}\text{C}$  nuclei to probe the molecular dynamics and structure of biological and commercial polymeric materials.

**Capability:** Requires sample concentration of at least 0.05 mole in 2 mL of solution. Magnetic field operates at 1.4T, corresponding to a resonance frequency of 15.08 MHz. Spinning resolution of 0.5 Hz over 10 mm sample tube; 90° rotation of magnetization requires pulse of <5 $\mu$ s duration and pulse programmer allows 180°- $\tau$ -90° pulse sequence to be performed. A computer with 8000 words is available for accumulation and processing of data.

**Applications:** Identification of monomers and polymers in solution; identification of molecular rotational isomers; determination of polymer tacticity, cross-link and branches; determination of polymer chain dynamics in solution and in the solid state; determination of molecular conformation and structure of biopolymers and proteins.

**Availability:** The use of this instrument by NBS research workers on problems of mutual interest can be arranged. It must be operated only under the direct supervision of the scientist in charge of the instrument.

**Contact:** Dr. Darrell H. Reneker, Chief of Polymer Crystal Physics Section, Polymer Building, Room A209, Phone 301-921-3344.

## GAS CHROMATOGRAPH-MASS SPECTROMETER SYSTEM

The gas chromatograph-mass spectrometer-computer system is designed for organic chemical applications, particularly trace organic analysis and structural identification. The system uses a quadrupole spectrometer and includes both electron impact and chemical ionization sources.

**Capability:** The gas chromatograph-mass spectrometer system is capable of measuring mass spectra with unit mass resolution from m/e 2 to 650 at a maximum scan speed of 325 amu/s. The gas chromatograph is equipped with linear temperature programming, dual column operation, thermal conductivity, flame ionization, and electron capture detectors. The mass spectrometer is controlled by a 16K word, 16 bit data acquisition and control system. The data system includes two 1.2 million word discs, programmable read-only memory, and an interactive display terminal. Both glass jet and membrane separators are available for the GC-MS interface.

**Applications:** Mass spectrometric analyses of gas chromatographic effluents from samples of biological and environmental origin are the predominant current applications. Other work in progress includes

isotope dilution mass spectrometry, precision of quantitation for both electron impact and chemical ionization, and spectrometric measurement and identification of impurities in Standard Reference Materials.

**Availability:** A limited amount of time is available for other groups and agencies. Laboratories with challenging analytical problems are encouraged to enter into collaborative programs with the Section, particularly in the areas of biological materials, clinical analysis, and trace organic analyses in the environment.

**Contact:** Dr. Robert Schaffer, Chief of the Bio-organic Standards Section, Chemistry Building, Room A367, Phone 301-921-2866.

## HIGH PRESSURE PHOTOIONIZATION MASS SPECTROMETER

This instrument combines a photoionization and reaction chamber with a mass spectrometer in order to investigate the interactions of positive ions with neutral molecules in the vapor phase.

**Capability:** Ionization of pure samples or mixtures may be induced by photoabsorption at 8.4, 10.0, 11.7, 16.7, or 21.2 eV over the pressure range 10<sup>-4</sup> to approximately 3 torr. Accurate rate constants are obtained at 300 K for bimolecular and relatively fast termolecular reactions involving ion-neutral collision processes. The kinetics of higher order processes including collisional stabilization and ionic solvation reactions may also be easily defined.

**Applications:** Determination of accurate rate constants for ion-molecule reactions; effect of internal energy and pressure on reaction rates; elucidation of ionic polymerization mechanisms; analysis of trace components using chemical ionization techniques; laboratory simulation of planetary ionospheres; simulation of gas phase radiolysis; determination of ionic fragmentation patterns for correlation with photoelectron spectroscopy.

**Availability:** Contingent upon contract commitments and direction of in-house program. In appropriate instances qualified scientists from NBS, other federal organizations, and private institutions may collaborate on problems of mutual interest to the operators.

### Literature:

[1] J. Am. Chem. Soc. **91**, 7627 (1969).

[2] J. Chem. Phys. **53**, 794 (1970).

[3] J. Am. Chem. Soc. **92**, 2937 (1970).

**Contact:** Dr. Pierre Ausloos, Chief of Radiation Chemistry Section, Chemistry Building, A-265, Phone 301-921-2783.

## HIGH RESOLUTION INFRARED SPECTROMETER

This facility consists of a high resolution vacuum spectrometer with associated hardware and software to cover the infrared region from 5.5  $\mu\text{m}$  to 1.5  $\mu\text{m}$ . The instrument is available for measuring high resolution spectra of molecules in the gas phase.

**Capability:** This instrument operates in the spectral range from 1850  $\text{cm}^{-1}$  to 6000  $\text{cm}^{-1}$  with a resolution of about 0.03  $\text{cm}^{-1}$ , a precision of measurement of  $\pm 0.002 \text{ cm}^{-1}$ , and an accuracy of measurement of about  $\pm 0.006 \text{ cm}^{-1}$ . The entire optical path can be evacuated to eliminate absorption due to atmospheric constituents. Facilities are available for making measurements on gas samples in the temperature range from  $-76^\circ\text{C}$  to  $+1200^\circ\text{C}$ . A variable long path absorption cell is also available, providing absorption paths up to 39 meters. The spectrometer output is recorded directly on magnetic tape, and software is available for processing the output on a digital computer to automatically provide an atlas listing the frequencies and intensities of absorption lines.

**Applications:** Fields of applications for these measurements are: air pollution, terrestrial and planetary atmospheric measurements, measurements on cool stars, molecular structure, studies of reaction intermediates and reaction products, flames and high temperature studies, thermodynamics, mechanisms of laser action, properties of chemical bonds, energy transfer mechanisms, and many more.

**Availability:** Instrument time is available for any projects which properly utilize the unique high resolution capabilities of this instrument.

**Contact:** Dr. Arthur Maki, Chief of Molecular Spectroscopy Section, Physics Building, Room B268, Phone 301-921-2021.

## ISOTOPE RATIO MASS SPECTROMETERS

The laboratory contains all the necessary chemical and mass spectrometric equipment for the determination of isotopic ratios at the "state of the art" ac-

curacy level for all elements that will ionize by either surface or thermal methods.

**Capability:** The range of available equipment is such that almost any size sample down to  $10^{-14}$  grams can be handled, for both absolute isotopic abundance ratio determinations or the determination of trace element concentration by isotope dilution.

**Applications:** Current applications include the determination of the absolute isotopic abundance ratios and atomic weights of the polynuclidic elements, the determination and certification of the absolute isotopic abundance ratios for standards of interest to the nuclear energy industry and the geochemist, the geochemical age determinations (Pb-U-Th, Rb-Sr) on lunar materials, and the determination of trace concentrations of a wide variety of elements in almost any conceivable matrix.

**Availability:** The facility is available to any qualified guest worker interested in high-accuracy analysis, but does require a three to six months training period.

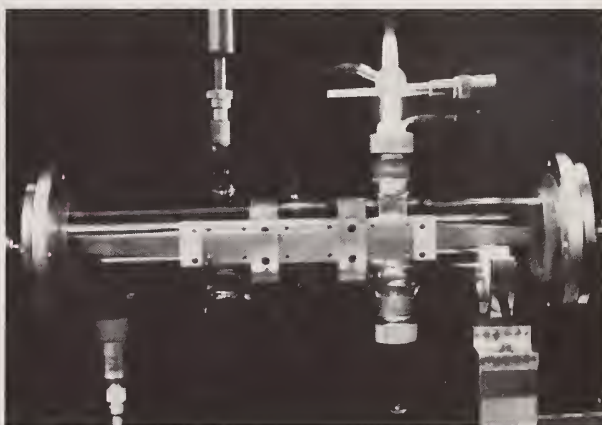
### Literature:

[1] NBS Technical Note, 456, Nov. 1968, pp 1-47.

[2] NBS Technical Note, 506, May 1970, pp 1-48.

[3] NBS Technical Note, 546, Nov. 1970, pp 1-110.

**Contact:** Dr. I. L. Barnes, Chief of Isotopic Analysis Section, Physics Building, Room A25, Phone 301-921-2078.



MICROWAVE SPECTROSCOPY FACILITY. Millimeter-wave parallel plate absorption cell with discharge production system.

## MICROWAVE SPECTROSCOPY FACILITY

The microwave spectroscopy laboratory at the National Bureau of Standards has had a long history of

research into problems involving extensive development of microwave instrumentation. Pioneering efforts in the study of transient and high temperature molecules have led to designs and techniques which affect spectrometer performance in many ways. Operational flexibility and sensitivity have been significantly extended in both the high and low frequency extremes of the traditional microwave region.

**Capability:** Two separate spectrometer systems are available with klystron sources and requisite hardware to cover the complete range from 2 to 132 GHz. Harmonic generation equipment extends the operation further into the millimetre region. Conventional septum-type waveguide absorption cells, used for studies of static systems, include a 12 ft gold-plated cell (3.3 GHz cutoff), 15 ft brass cell (8 GHz cutoff), and 4 ft all-stainless and Teflon cell for special handling of reactive gases (12 GHz cutoff). All three conventional cells can be cooled to dry ice and the special stainless cell may be heated to 300°C. Several parallel plate cells are available complete with discharge and pyrolysis sample generating apparatus and fast-continuous-flow vacuum systems. Special ovens will allow operating temperatures to 1000°C for certain experiments.

**Applications:** Analyses of rotational spectra of polar gas-phase molecules yielding structural parameters, electric dipole moments, quadrupole coupling constants and spectroscopic details such as vibration-rotation interactions, etc. Stable molecules with vapor pressures of a few micrometres of Hg at temperatures below 1000°C are readily accessible. A variety of small transient molecules with lifetimes of the order of 10 ms have been successfully studied in the flow systems. Certain laser-microwave double resonance and laser pumped reaction systems are also within the range of capabilities.

**Availability:** To qualified research workers on a collaborative basis with NBS staff or in special cases where background and experience is adequate on a guest worker basis. It should be emphasized that these spectrometer systems are hand-built, state-of-the-art devices and require extended experience for competent operation.

**Contact:** Dr. Donald R. Johnson, Molecular Spectroscopy Section, Physics Building, Room B268, Phone 301-921-2021.

## MÖSSBAUER SPECTROSCOPY OF METALS

Mössbauer effect utilizes the nuclear properties of various isotopes to probe the local chemical, magnetic

and electronic environment of an atom embedded in a solid material. By detecting the conversion electrons that emanate from a sample, very thin surface layers can be studied. Differences between the surface and bulk can be observed by also detecting the primary Mössbauer effect gamma rays.

**Capability:** Solid specimens of irregular shapes with outside dimensions up to 30 cm can be utilized. Minimum size is about 0.5 cm diameter and 5 $\mu$ m thickness. Transmission spectra can be obtained (on powders or foils) as a function of temperature in applied magnetic fields up to 50kG. On selected specimens, time delayed perturbed angular correlation studies can also be made.

**Applications:** Measurements of isomer shifts, magnetic hyperfine fields and electric field gradients permit studies of phase composition, magnetic properties, electronic structure and diffusion. Applications to corrosion studies, surface effects, and other metallurgical problems.

**Availability:** To any qualified NBS research worker. In appropriate instances, researchers from other organizations can gain access to the facility. Scientists from U.S. universities, federal agencies and industries, and from abroad have qualified to use this equipment in the past.

### Literature:

- [1] Nuclear Resonances in Metals: NMR and Mössbauer Effect by I. D. Weisman, L. J. Swartzendruber and L. H. Bennett in Measurement of Physical Properties, E. Passaglia and R. F. Bunshah, Editors. (Wiley-Interscience, New York), V. 6(2), 1973.
- [2] Mössbauer Spectrometer Calibration Using TiFe, Nat. Bur. Stand. (U.S.) Tech. News Bull. 54, No. 10, page 239 (1970).

**Contact:** Dr. L. H. Bennett, Alloy Physics Section, Materials Building, Room B-150, Phone 301-921-2982.

## MULTICHANNEL FLAME SPECTROMETER

This flexible system was designed and assembled at NBS to perform precise spectral measurements in the emission and atomic absorption modes using flames or similar high temperature "thermostates." The spectrometer used to detect the radiations originating from the excitation source is a conventional 1-m grating instrument, arranged to focus on a photographic plate, a variable exit slit, or a metal plate with eight exit slits.

**Capability:** Operable as a spectrograph, a scanning monochromator, or a multichannel instrument. Measures in emission and atomic absorption modes for one element at a time, or up to 8 chemical species simultaneously. The output is either analog or digital.

**Applications:** Analysis for alkali and earth alkali metals in body fluids, agricultural products, soils, air, and water samples; for elements from the I to VIII groups in alloys; for trace elements such as Pb, Cd, Hg, Cu, Cr, Ni.

**Availability:** To any qualified NBS research worker, after an initial training period by R. Mavrodineanu.

**Literature:**

- [1] R. Mavrodineanu, Discussion of some experimental and fundamental flame spectroscopy, *Revue GAMS*, **1971**, no. 3, 39-60.
- [2] R. Mavrodineanu and H. Boiteux, *Flame Spectroscopy*, John Wiley and Sons, 1965, pp. 721.

**Contact:** Dr. R. Mavrodineanu, Assistant Chief, Spectrochemical Analysis Section, Chemistry Building, Room B-218, Phone 301-921-2141.

## NUCLEAR MAGNETIC RESONANCE SPECTROSCOPY

The NMR method makes use of the magnetic and electric moments of atomic nuclei to probe the local environment about selected nuclei in materials. Appropriate nuclei of virtually any chemical element can be used, but considerations such as isotopic abundance, sensitivity and atomic motion restrict studies to preselected problems.

**Capability:** Metallic specimens generally should be in the form of -325 mesh powder, but other forms including single crystals are possible. Wide-line NMR spectroscopy with laboratory electromagnet and high-power pulsed NMR spectroscopy with superconducting magnet. Data acquisition system used for sensitivity enhancement. Ferromagnetic NMR spectroscopy also available. Temperature and pressure variations possible.

**Applications:** Measurements of Knight shifts, relaxation times, electric quadrupole interactions and line-shapes permit studies of electronic structure, defect structure and diffusion. These have been important primarily in the study of metals, alloys, and intermetallic compounds but occasional attention has been given to practical problems outside of metallurgy such as detecting cancer in live mice utilizing NMR.

**Availability:** To any qualified NBS research worker. In appropriate instances, researchers from other organizations can gain access to the facility. Scientists from U.S. universities, federal agencies and industries, and from abroad have qualified to use this equipment in the past.

**Literature:** *Nuclear Resonances in Metals: NMR and Mössbauer Effect* by I. D. Weisman, L. J. Swartzendruber and L. H. Bennett in *Measurement of Physical Properties*, E. Passaglia and R. F. Bunshah, Editors. (Wiley-Interscience, New York, V. 6(2), 1973.

**Contact:** Dr. Lawrence H. Bennett, Chief of Alloy Physics Section, Materials Building, Room B150, Phone 301-921-2982.



MULTICHANNEL FLAME SPECTROMETER.

## PHOTOIONIZATION SPECTROMETRY

The photoionization laboratory operates and maintains two major equipment items for use in basic studies of photoionization processes in low pressure gases and vapors. This is a powerful technique for the accurate determination of ionization thresholds for molecular, dissociative, and ion-pair processes as well as the study of the spectroscopy of ions.

**Capability:** Each unit consists of a windowless vacuum ultraviolet monochromator combined with a

magnetic mass spectrometer for the detection and identification of photoions. The best optical resolution available at present is 0.012 nm in the first order over the wavelength region of 130 to 60 nm. Included in the apparatus is a step-controlled grating drive, digitized photon detector, and the programmed control of wavelength, ion and photon recording and the print-out of data. Automatic computation of ion yield and the plotting of original or smoothed data is a present capability. The ion source of the mass spectrometer can be cooled to 115 K or heated to 500 K to enable the identification of effects due to thermal excitation of molecules under study.

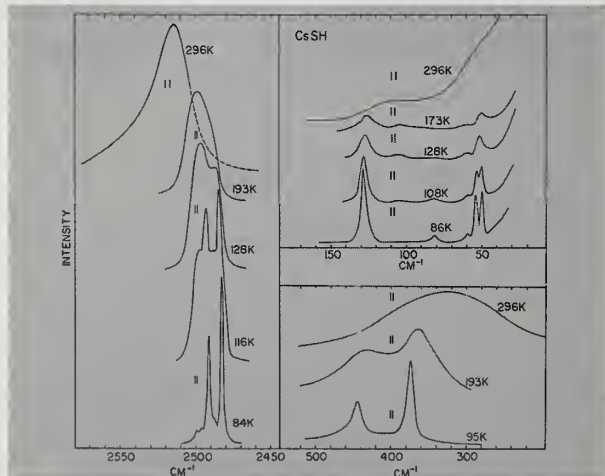
**Applications:** A continuing program of research on molecular ionization, dissociative ionization, and ion-pair processes in diatomic and polyatomic molecules has included the study of autoionization and predissociation phenomena, identification of Rydberg series and progressions, the determination of Franck-Condon factors for direct ionization, accurate ionization threshold values and the derivation of bond dissociation energies, electron affinities and heats of formation of ions and molecules.

**Availability:** The instruments are available at NBS to qualified research workers following a short training period. Proposed research projects require the approval of the Section Chief.

#### Literature:

- [1] V. H. Dibeler, et al, *Int. J. Mass Spectrometry and Ion Phys.* **11**, 49 (1973).
- [2] J. Chem. Phys. **44**, 1271 (1966).
- [3] K. E. McCulloh, *J. Chem. Phys.* **59**, Oct. 1973.

**Contact:** Dr. Henry M. Rosenstock, Chief, Elementary Processes Section, Chemistry Building, Room A145, Phone 301-921-2792.



**RAMAN SPECTROSCOPY.** Raman spectra showing changes associated with order-disorder phase transitions (at ca. 205 K and ca. 113 K) in CsSH, lattice translations (30-200  $\text{cm}^{-1}$ ), lattice librations (200-600  $\text{cm}^{-1}$ ) and SH-stretching modes (ca. 2500  $\text{cm}^{-1}$ ).

## RAMAN SPECTROSCOPY

The spectral features observed in Raman and infrared spectroscopy allow qualitative and quantitative identification of species and can be used to establish structure and measure dynamical interactions in molecular compounds and crystalline bodies. Raman spectroscopy routinely studies the molecular motions in the range 0 to 5000  $\text{cm}^{-1}$ . It investigates the scattering of electromagnetic waves (typically 400 to 700 nm) caused by the modulation of the optical polarizability of atoms and molecules created by their internal vibrations, rotations, translations and a variety of electronic processes (magnons, plasmons).

**Capability:** Laser sources are used in conjunction with a double monochromator for spectral analysis of the scattered light. The photoelectrically detected signal is processed by either dc or photon rate techniques. The spectrometer covers the range from 30,000 to 10,000  $\text{cm}^{-1}$  with a resolution of 0.25  $\text{cm}^{-1}$ . The lasers available are a He-Ne laser operation at 632.8 nm, 60 mW power, and an  $\text{Ar}^+$  ion laser operating principally at 488.0 or 514.5 nm, powers up to 1 watt. Single frequency operation of the  $\text{Ar}^+$  laser at 514.5 nm allows use of an  $\text{I}_2$  absorption filter for laser line rejection in the scattered beam. The instrument is equipped with a versatile sample chamber which allows a great variety of sample types and scattering geometries to be selected. Equipment for temperature variation and matrix isolation is provided.

**Applications:** Raman spectroscopy is a useful tool for the identification of molecular or ionic species. Structures and force constants can be determined for liquids, solids, and gases. Typical applications involve the spectra of matrix isolated free radicals and molecules, lattice and molecular dynamics of polymers, phase transitions in solids (including melting), studies of isomerism, vibrational and rotational studies in gases, investigation of stoichiometry in crystals and disordered solids, and measurements of chemical reaction products.

**Availability:** The instrument is available to qualified research workers at NBS, following a training period in its use. Proposed research projects require the approval of the instrument manager, or in special cases by a users committee.

**Contact:** Dr. Gregory J. Rosasco, Physicist, Solid State Materials Section, Materials Building, Room A165, Phone 301-921-2780.

# SURFACE PROPERTIES FACILITIES



ELECTRON PROBE MICROANALYZER.

## ELECTRON PROBE MICROANALYZER

The electron probe microanalyzer has the unique function of qualitatively and quantitatively analyzing microscopic regions of specimens, of 1-3  $\mu\text{m}$  diameter, with regard to elemental composition. This is achieved by focusing a beam of electrons upon the specimen surface, and analyzing the characteristic x-radiation emitted from the bombarded spot on the specimen.

The function of localized analysis is complemented by capabilities for area- and line-scanning, which permit the simultaneous exploration of a microscopic region.

The electron probe has been used for a wide range of specimens, including lunar and terrestrial rocks, alloys, ceramics, paper, and biological materials.

**Operational Characteristics:** Specimens of up to 2.54 cm (1 inch) diameter can be analyzed. For quantitative analysis, specimens must be flat and electric insulators must be coated with a film of carbon or metal. Facilities for specimen preparation are available. All elements of atomic number above 4 can be detected, and quantitative analysis is possible for elements of atomic number above 10. Limits of detection are typically in the order of 0.01%; the total sample mass analyzed is typically  $10^{-11}\text{g}$ . Accuracy of

quantitative analysis for major constituents is typically 2-3% relative.

**Typical Applications:** Study of inclusions, of corrosion products on alloys, of coating and paint layers, of particulate corrosion or pollution products, altered coins, failures of solid-state microelectronics, manufacturing techniques of archaeological objects, distribution of elements in biological tissue (plant or animal).

**Availability:** To trained operators only. Service using our own operators is available.

**Contact:** Dr. Kurt F. J. Heinrich, Chief, Surface Microanalysis Section, Chemistry Building, Room A121, Phone 301-921-2871.

## ION PROBE MICROANALYZER

The ion probe microanalyzer is a tool for qualitative and semiquantitative elemental analysis of microscopic regions of solid specimens. The technique of ion probe microanalysis is based on the formation of a focused beam of ions which bombards a microscopic region of the specimen. The area of impact of the primary beam is eroded by it, and secondary ions of the elements present in the specimen are emitted. These ions are analyzed in a mass analyzer; the mass numbers of the ions indicate which elements are present, and the intensities of emission are related to the concentrations of the elements forming secondary ions.

The capabilities of this instrument include trace analysis, isotope ratio measurement, and the detection and analysis for elements of low atomic number, including hydrogen. All these measurements can be taken from a region a few micrometres wide and a few angstroms deep.

**Operational Characteristics:** Specimens of up to 2.54 cm (1 inch) diameter can be analyzed. The specimens must be flat. Facilities for specimen preparation are available. All elements can be detected and analyzed semiquantitatively. The sensitivity is highest for low atomic number elements, where it is in the ppm range. The accuracy of isotope ratio measurements for major components is typically 2 to 3%.

**Typical Applications:** This is a novel instrument, and present experience is limited. Lunar rocks, distribution of impurities in semiconductors, surface impurities on irradiated materials, and trace element distributions in glasses have been investigated. Preliminary investigations of biological materials are very encouraging.

**Availability:** In view of the expense and complexity of this instrument, access is given to trained operators only. Service by the NBS operator is available.

**Contact:** Dr. Kurt F. J. Heinrich, Chief of Surface Microanalysis Section, Chemistry Building, Room A121, Phone 301-921-2871.

## MOLECULAR BEAM— FIELD EMISSION MICROSCOPE

A molecular beam machine is combined with a field emission microscope, capable of operation down to 4.2 K, to observe deposition, surface migration, adsorption, displacement effects, and catalysis in almost molecular detail.

**Capability:** Surface studies may be made on any metal or semiconductor capable of being used as a field electron emission source. Included are such metals as tungsten, molybdenum, rhenium, rhodium, nickel, niobium, ruthenium, and many others. The specific features of the apparatus are excellent control and quantitative measure of the deposition of gases on surfaces, the facile switching of gases in the beam, and the ease of control of the beam temperature. The temperature range available for the emitter tip is from 4.2 K to the melting point of the metal or semiconductor.

**Applications:** Fundamental studies and observations of catalytic surfaces, of adsorption, of sticking probabilities, of adsorption-displacement, and of surface reactions are possible with the apparatus.

**Availability:** To qualified research personnel on a cooperative basis. Prior arrangements must be made, and only short term (one to two weeks) experiments will be considered.

### Literature:

- [1] "Preparation of Contiguous Chemisorbed Adlayers by Sequential Deposition and Surface Migration" Ralph Klein, *Surface Science*, **29**, No. 1, pp. 309-316, January, 1972.
- [2] "Second Layer Migration with Trapping on First Layer Sites: Hydrogen, Nitrogen, and Carbon Monoxide on Tungsten" Mordecai Folman and Ralph Klein, *Surface Science*, **11**, pp. 430-442, 1968.
- [3] "The Deposition of Hydrogen Beams on Tungsten" Ralph Klein, *Surface Science*, **11**, pp. 227-241, 1968.

**Contact:** Dr. Ralph Klein, Chief, Surface Chemistry Section, Chemistry Building, Room B248, Phone 301-921-2161.

## MOLECULAR BEAM MACHINE

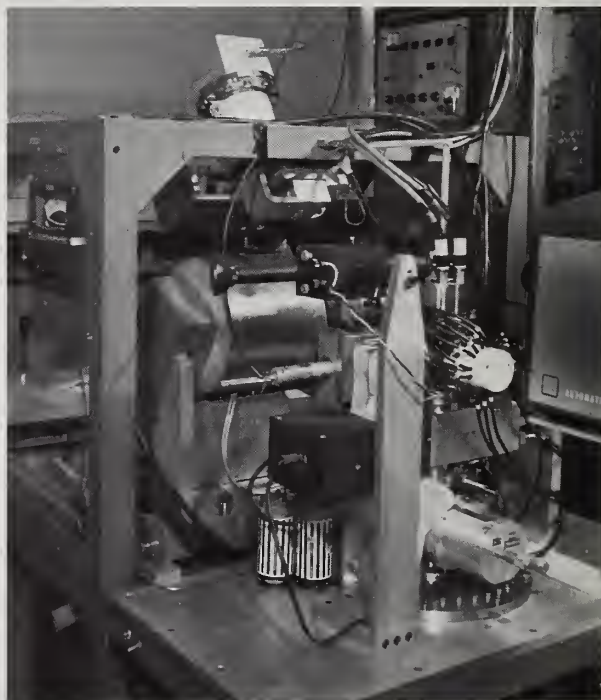
An ultrahigh vacuum, differentially pumped molecular beam machine for high precision work. At present it uses alkali or alkali halide beams with surface ionization detection.

**Capability:** Source is a resistively heated effusion cell. Detector can probe  $6.5\mu\text{m}$  perpendicular to the beam axis, with a resolution of  $0.02\mu\text{m}$ . Ultimate vacuum is  $10^{-11}$  torr.

**Application:** Primarily as a research tool for investigation of gas-surface interactions.

**Availability:** This equipment is being used presently on a longrange program concerned specifically with measurement of van der Waal's forces. Availability is limited to very short-range problems of mutual interest in that field, with operation by Section staff.

**Contact:** Dr. Ralph Klein, Chief of Surface Chemistry Section, Chemistry Building, Room B248, Phone 301-921-2161.



SURFACE IONIZATION ANALYZER.

## SURFACE AREA ANALYZER

The Surface Area Analyzer provides a complete system for preconditioning and measuring both low and high values of surface area by the classic Brunauer-Emmett-Teller technique, employing krypton and nitrogen as the absorbates in a metal system. In addition, pore size distribution can be obtained from complete adsorption or desorption isotherms. Calculations can be made manually or with available computer programs.

**Capability:** The system is capable of measuring active surface areas as low as 100 cm<sup>2</sup>/g. The reproducibility of the system using krypton is  $\pm 3$  percent for materials with surface areas of 200 cm<sup>2</sup>/g or greater, having a total sample area of 500 cm<sup>2</sup> or greater. Using nitrogen, the reproducibility is  $\pm 3$  percent for a total sample area of 5 m<sup>2</sup> or greater. Special sample holders are available, capable of accepting planar materials having dimensions 1.5 x 15 x .05 cm.

**Applications:** The surface area and/or pore size distribution of materials such as catalysts, gasket material, paper, plastics, foams, etc., may be determined. The special sample holders for planar materials enable determination of surface properties and physical tests on the same specimen.

**Availability:** To any qualified research worker after an initial training period with Dr. E. L. Graminski. A good knowledge of vacuum systems is necessary to operate the apparatus.

**Contact:** Mr. W. K. Wilson, Chief, Paper Evaluation Section, Polymer Building, Room A369, Phone 301-921-3360.

## SURFACE IONIZATION ANALYZER

Measurements of the surface lifetimes of certain ionic species, work functions, ionization potentials, and electron affinities can be made with this instrument.

**Capability:** Adsorption lifetimes of adsorbed ions (positive or negative) in the region 1 to 500 milliseconds can be determined. Ionization potential measurements can be made on those species with potentials less than about 6 volts; this natural limitation arises because metal surfaces on which the surface ionization occurs do not exceed about 5.5 volts. Work functions may be obtained for those temperature regions in which the surface ionization process is reasonably efficient.

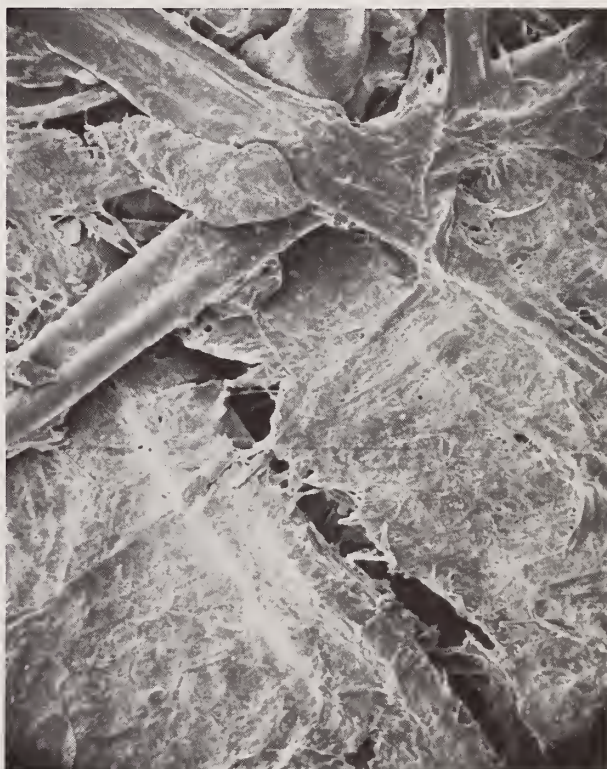
**Applications:** By making measurements of properties of a metallic surface which are related to surface ionization, this analyzer can provide data for ion engines, magneto-hydrodynamic generators, thermionic converters, and other devices.

**Availability:** In special circumstances and with prior arrangement.

### Literature:

- [1] "The Electron Affinity of Lithium." Milton D. Scheer, and Joseph Fine, J. Chem. Phys. **50**, No. 10, 4343-4347, May 15, 1969.
- [2] "The Reaction of Carbon Monoxide with a Tantalum Surface Heated above 2000°K." Milton D. Scheer and Joseph Fine, Surface Science, **12**, No. 1, pp. 102-107, Sept. 1968.
- [3] "Positive and Negative Self-Surface Ionization of Tungsten and Rhenium." Milton D. Scheer and Joseph Fine, J. Chem. Phys. **46**, No. 10, 3698-4003, 15 May 1967.

**Contact:** Dr. Ralph Klein, Chief, Surface Chemistry Section, Chemistry Building, Room B248, Phone (301) 921-2161.



Scanning electron photomicrograph shows broken fibers and other characteristics of a paper specimen which affect the surface area of the specimen. A typical specimen measured by the SURFACE AREA ANALYZER.

# X-RAY FACILITIES

## ROTATING X-RAY ANODE DIFFRACTION UNIT

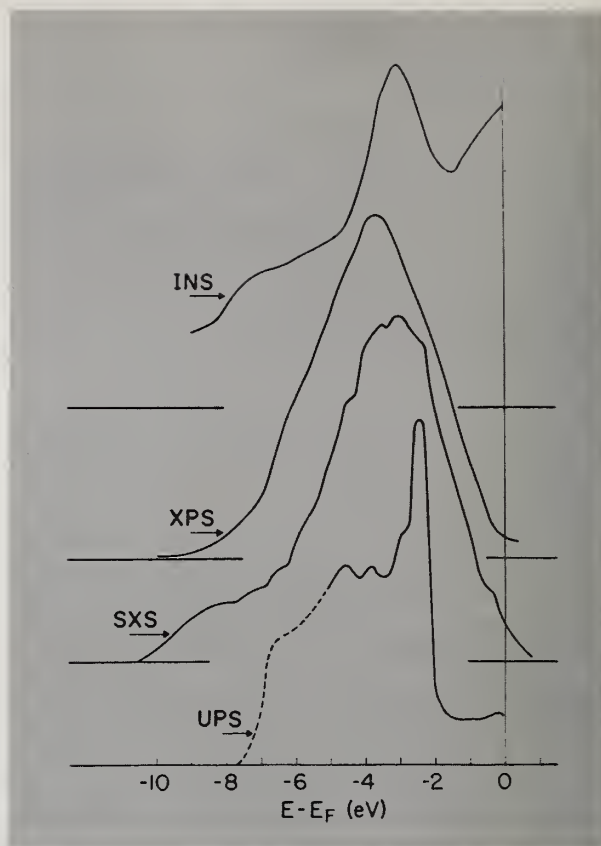
Stationary anode X-ray tubes have been used for most conventional X-ray diffraction generators. However, since a large amount of heat energy is generated by the electron beam bombardment on the anode, the X-ray intensity is limited. The rotating anode tube can give higher intensity X-rays because the water-cooled anode is rotated at a high speed to distribute the heat energy over the circumferential surface of the anode.

**Capability:** The maximum operating conditions for this unit are 60 kV and 100 mA. This produces X-rays whose brilliance is 10 to 20 times greater than that of the normal sealed X-ray tubes. This makes it possible to reduce the exposure time dramatically in the photographic method, to scan rapidly with a counter, or to study dynamic changes or transformations in the crystal structure.

**Applications:** Measurement of the long period in chain-folded polymer crystals. Crystallographic studies of paraffins; observations of phase changes in polymer and paraffin crystals; X-ray diffraction patterns from wet collagen; detection of small amounts of crystalline impurities.

**Availability:** The use of this instrument by NBS research workers on problems of mutual interest can be arranged. It must be operated only under the direct supervision of the scientist in charge of the instrument.

**Contact:** Dr. Darrell H. Reneker, Chief, Polymer Crystal Physics Section, Polymer Building, Room A209, Phone 301-921-3344.



**SOFT X-RAY SPECTROMETER.** A comparison of the soft x-ray  $M_s$  spectrum (SXS) of Cu with ultraviolet (UPS) and x-ray (XPS) photoemission and ion neutralization (INS) spectra.

## SOFT X-RAY SPECTROMETER

This spectrometer has a 2-meter grazing incidence and a ruled glass grating, 30,000 lines per inch. It is equipped with a strip electron multiplier detector and magnetic tape output for digital computer processing. Programs are available for data reduction and plotting of spectra. A spectral range of approximately 2.5 to 80 nm can be covered but as presently set, the grating cut-off is at about 4 nm.

**Capability:** Optimum specimen shape is a rod about  $\frac{1}{4}$ " dia.  $\times$  3" long but variations from this can be used. Electron excitation of 2500 volts is used which causes some heating of the specimen. The temperature can be controlled within limits and can be continuously monitored with a thermocouple on the specimen. The maximum effective skin depth of material being analyzed is of the order of 4 to 100 nm, depending on atomic number.

**Applications:** Chemical analysis for the light elements down to lithium in atomic number (except oxygen and nitrogen with the spectrometer as presently set); this application would be particularly useful when associated with surface and shallow skin depth phenomena, such as the identification of boride, carbide, and sulfide precipitates on a fracture surface, for example. Application to other types of metallurgical phenomena such as detection of dezincification in brass and the reduction of iron oxide in the aluminizing of steel sheet; in the case of the higher atomic number elements, transitions between outer electron levels, and transitions from the valence band to outer levels are observed. Valence band spectra as a function of the state of chemical combination; the bulk of the work that has been done on this instrument has been the study of valence band structure to obtain a better understanding of the principles of intermetallic compound formation and the electronic basis for their physical properties.

**Availability:** To any qualified NBS research worker. Also, in appropriate situations the facility can be made available to researchers from other government, education and industrial organizations.

**Literature:**

- [1] A Soft X-Ray Spectrometer with Improved Drive, J. R. Cuthill, *Rev. Sci. Inst.* **41**, 422 (1970).
- [2] Improved Drive for Soft X-Ray Spectrometer, NBS Tech. News Bull., October 1970, Vol. **54**, No. 10, Page 231.

**Contact:** Dr. John R. Cuthill, Assistant Chief, Alloy Physics Section, Materials Building, Room B-148, Phone 301-921-2913.

## THREE-CIRCLE X-RAY DIFFRACTOMETER

Operating completely under computer control, the instrument orients a single crystal in the x-ray beam and records the diffracted intensity for each of several thousand reflections.

**Capability:** Data are collected at rates up to 1000 reflections per day. Accuracy is indicated by the final R value obtained after least squares refinement. Typical values are in the range 3 to 5%.

**Applications:** Structural parameters, including bond lengths, angles between bonds, and amplitudes of thermal vibrations are obtained. Precise three-dimensional diagrams can be drawn to scale. Diagrams of this type are used by physicists, chemists and other

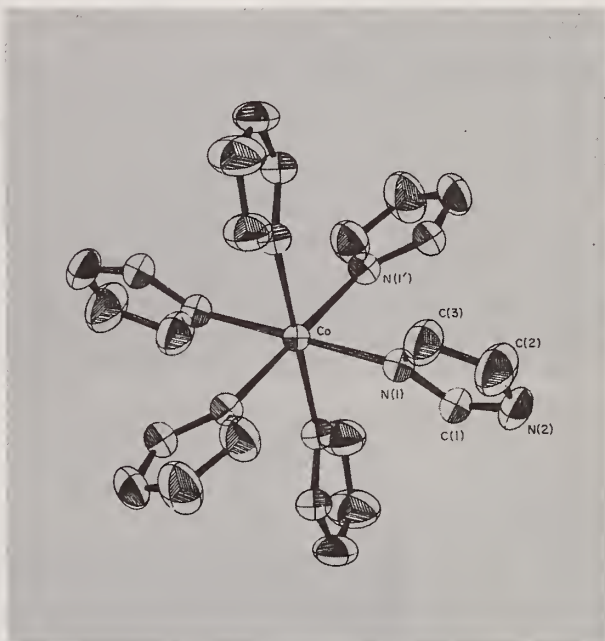
materials scientists concerned with bonding, electronic configurations, lattice and atomic vibrations, coordination, valence states, and other properties.

**Availability:** On a selective basis when not required for Crystallography Section programs. The instrument must be operated by Section personnel and only work of mutual interest can be undertaken.

**Literature:**

- [1] *Inorganic Chemistry*, **9**, 2228 (1970).
- [2] *Crystal Structure Communications*, **1**, 247 (1972).

**Contact:** Dr. Alan D. Mighell, Room B222, Materials Building, Phone 301-921-2950.



**THREE CIRCLE X-RAY DIFFRACTOMETER.** Diagram of the cobalt imidazole complex cation in the compound  $\text{Co}(\text{Im})_2(\text{NO}_3)_2$ . The ellipsoids represent the root-mean-square amplitude of thermal oscillations of atoms.



# INDEX

|   | Page |   | Page |
|---|------|---|------|
| Accelerated Weathering Laboratories .....       | 6    | High Pressure Generators .....                | 18   |
| Acoustic Anechoic Chamber .....                 | 4    | High Pressure Optical Fluorescence System ..  | 18   |
| Acoustic Reverberation Chamber .....            | 4    | High Pressure Photoionization Mass            |      |
| Acoustical Thermometer .....                    | 23   | Spectrometer .....                            | 38   |
| Alloy Preparation Laboratory .....              | 19   | High Pressure PVT Dilatometer .....           | 19   |
| Analytical Spectrophotometer .....              | 34   | High Resolution Infrared Spectrometer .....   | 39   |
| Antenna Anechoic Chamber .....                  | 5    | High Temperature Controlled-Atmosphere        |      |
| Antenna Field Strength Facilities .....         | 5    | Furnace .....                                 | 20   |
| Automatic Network Analyzer .....                | 12   | High Temperature Vaporization Laboratory ...  | 20   |
| Central Computer Facilities .....               | 11   | Hydrogen Liquefaction Facility .....          | 24   |
| Cobalt-60 Irradiation Facility .....            | 33   | Inorganic Glasses Laboratory .....            | 21   |
| Concave Grating Spectrographs .....             | 35   | Intermediate-Energy Standard Neutron Field .. | 29   |
| Cryogenic Flow Research Facility .....          | 23   | Ion Probe Microanalyzer .....                 | 43   |
| Czerny-Turner Spectrograph .....                | 35   | Isotope Ratio Mass Spectrometers .....        | 39   |
| Deadweight Force Calibration Machines .....     | 25   | Isotope Separator Laboratory .....            | 29   |
| Electron Energy Loss Spectrometers for Gases .. | 36   | Laser Materials Facility .....                | 21   |
| Electron Probe Microanalyzer .....              | 43   | Liquefied Natural Gas Flow Facility .....     | 24   |
| Electron Van de Graaff Accelerator .....        | 2    | Linear Electron Accelerator .....             | 2    |
| Electro-optical High Voltage Field Mapping      |      | Low Temperature Adiabatic Calorimeter .....   | 9    |
| Systems .....                                   | 13   | Machine Tools, Numerically Controlled .....   | 25   |
| Far Infrared Spectroscopy .....                 | 36   | Mercury Manometer .....                       | 22   |
| Filtered Neutron Beams .....                    | 29   | Microcalorimetry .....                        | 10   |
| Fire Research Laboratory .....                  | 17   | Microwave Spectroscopy Facility .....         | 39   |
| Flame Emission Spectrometry with Repetitive     |      | Millisecond High Temperature Thermophysical   |      |
| Optical Scanning .....                          | 36   | Measurements .....                            | 22   |
| Flash Photolysis Resonance Fluorescence         |      | Molecular Beam-Field Emission Microscope ..   | 44   |
| Apparatus .....                                 | 37   | Molecular Beam Machine .....                  | 44   |
| Fluid Flow Measurement .....                    | 26   | Monoenergetic Neutron Beam Facilities .....   | 30   |
| Fluorine Combustion Calorimeter .....           | 9    | Mössbauer Spectroscopy of Metals .....        | 40   |
| Fourier Transform Nuclear Magnetic Resonance    |      | Multichannel Flame Spectrometer .....         | 40   |
| Spectrometer .....                              | 37   | Neutron Diffractometers .....                 | 30   |
| Gas Chromatograph-Mass Spectrometer System      | 38   | Neutron Radiography Facility .....            | 31   |
|   |      | Neutron Scattering Spectrometer .....         | 31   |

National Bureau of Standards laboratories at Boulder, Colorado.

# INDEX (continued)

|  | Page |
|--|------|
| Non-Magnetic Facility .....                                    | 13   |
| Nuclear Irradiation Facilities .....                           | 32   |
| Nuclear Magnetic Resonance Spectroscopy ...                    | 41   |
| Nuclear Orientation Cryostat .....                             | 24   |
| Nuclear Reactor .....  | 28   |
| Photoionization Spectrometry .....                             | 41   |
| Platinum-lined Adiabatic Solution Calorimeter.                 | 10   |
| Plumbing Research Laboratory .....                             | 7    |
| Positive-Ion Van de Graaff Accelerator .....                   | 3    |
| Precision Humidity Measurement .....                           | 16   |
| Raman Spectroscopy .....                                       | 42   |
| Reactance Bridge for Power Loss Measurement                    | 14   |
| Rooftop Antenna Range .....                                    | 6    |
| Rotating Anode X-Ray Diffraction Unit .....                    | 46   |
| Rotating, Platinum-lined, Adiabatic Bomb<br>Calorimeter .....  | 11   |
| Scanning Electron Microscope .....                             | 15   |
| Soft X-Ray Spectrometer .....                                  | 46   |
| Special Announcements on WWV/WWVH ...                          | 34   |
| Structures Laboratory .....                                    | 7    |
| Sulfur Dioxide Pollution Monitor .....                         | 16   |
| Surface Area Analyzer .....                                    | 45   |
| Surface Ionization Analyzer .....                              | 45   |
| Synchrotron Ultraviolet Radiation Facility .....               | 3    |
| Thermal Engineering Laboratories .....                         | 8    |
| Three-Circle X-Ray Diffractometer .....                        | 47   |
| Three-Dimensional Precision Measurement ...                    | 27   |
| Time-of-Flight Neutron Spectrometers .....                     | 32   |
| Transmission Electron Microscope .....                         | 15   |
| Universal Testing Machine, Twelve Million<br>Pound-Force ..... | 27   |
| Wind Tunnel for Unsteady Flows .....                           | 28   |
| WWVL VLF Broadcast Station .....                               | 33   |

*National Bureau of Standards laboratories in Montgomery County, Maryland, near Gaithersburg.*

## *Photo*

*A. The Administration Building, seen from the courtyard of the NBS Library.*

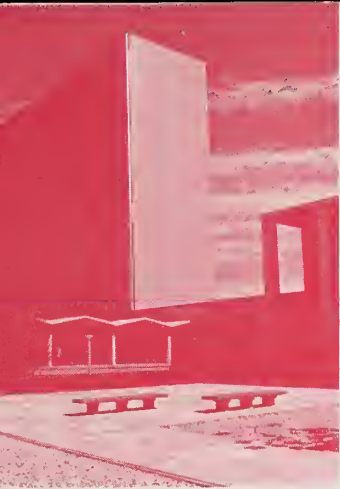
*B. One of the seven General Purpose Laboratories is seen in the background. 385' x 105', the building contains 348 laboratories and offices.*

*C. The 550 acre NBS-Gaithersburg site seen from the air. The seven General Purpose Laboratories and the 11-story Administration Building are in the center of the picture.*

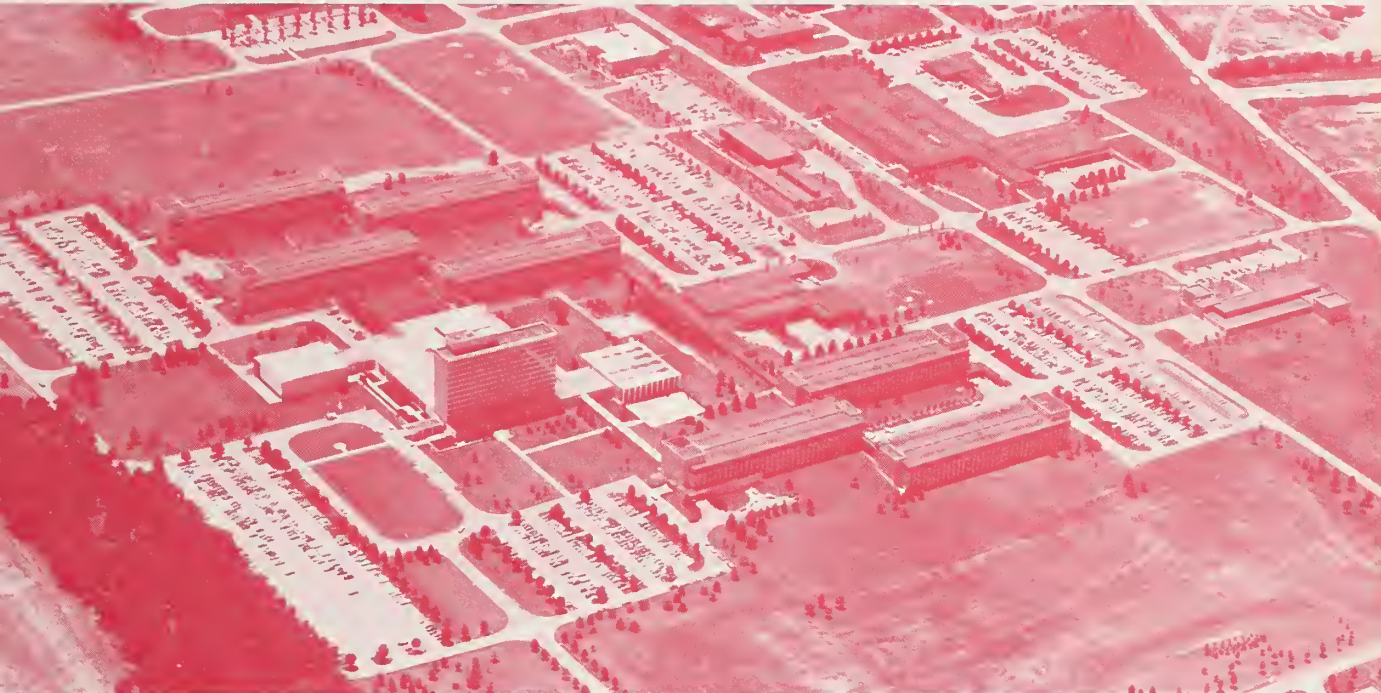
*D. Reactor Building. The NBS nuclear reactor and associated facilities are located in the block-type part of the structure.*

*E. This passageway, with its replica in glass of the Periodic Table of the Elements, connects the Isotope Separator Laboratory with the other wings of the Radiation Physics Building.*

*F. Engineering Mechanics Building. The five story high-bay space houses the 12 million pound-force Universal Testing Machine.*



B



F



E



**U.S. DEPARTMENT OF COMMERCE**  
**National Bureau of Standards**  
Washington, D.C. 20234

OFFICIAL BUSINESS

Penalty for Private Use, \$300

POSTAGE AND FEES PAID  
U.S. DEPARTMENT OF COMMERCE  
COM-215

**Fourth-class Mail**













