

# NATIONAL BUREAU OF STANDARDS REPORT

9923

## FATIGUE FAILURE OF ELECTROFORMED PRINTING PLATES

To

Electrolytic Section  
Bureau of Engraving and Printing  
Washington, D. C.



U.S. DEPARTMENT OF COMMERCE  
NATIONAL BUREAU OF STANDARDS

## NATIONAL BUREAU OF STANDARDS

The National Bureau of Standards<sup>1</sup> was established by an act of Congress March 3, 1901. Today, in addition to serving as the Nation's central measurement laboratory, the Bureau is a principal focal point in the Federal Government for assuring maximum application of the physical and engineering sciences to the advancement of technology in industry and commerce. To this end the Bureau conducts research and provides central national services in three broad program areas and provides central national services in a fourth. These are: (1) basic measurements and standards, (2) materials measurements and standards, (3) technological measurements and standards, and (4) transfer of technology.

The Bureau comprises the Institute for Basic Standards, the Institute for Materials Research, the Institute for Applied Technology, and the Center for Radiation Research.

**THE INSTITUTE FOR BASIC STANDARDS** provides the central basis within the United States of a complete and consistent system of physical measurement, coordinates that system with the measurement systems of other nations, and furnishes essential services leading to accurate and uniform physical measurements throughout the Nation's scientific community, industry, and commerce. The Institute consists of an Office of Standard Reference Data and a group of divisions organized by the following areas of science and engineering:

Applied Mathematics—Electricity—Metrology—Mechanics—Heat—Atomic Physics—Cryogenics<sup>2</sup>—Radio Physics<sup>2</sup>—Radio Engineering<sup>2</sup>—Astrophysics<sup>2</sup>—Time and Frequency.<sup>2</sup>

**THE INSTITUTE FOR MATERIALS RESEARCH** conducts materials research leading to methods, standards of measurement, and data needed by industry, commerce, educational institutions, and government. The Institute also provides advisory and research services to other government agencies. The Institute consists of an Office of Standard Reference Materials and a group of divisions organized by the following areas of materials research:

Analytical Chemistry—Polymers—Metallurgy—Inorganic Materials—Physical Chemistry.

**THE INSTITUTE FOR APPLIED TECHNOLOGY** provides for the creation of appropriate opportunities for the use and application of technology within the Federal Government and within the civilian sector of American industry. The primary functions of the Institute may be broadly classified as programs relating to technological measurements and standards and techniques for the transfer of technology. The Institute consists of a Clearinghouse for Scientific and Technical Information,<sup>3</sup> a Center for Computer Sciences and Technology, and a group of technical divisions and offices organized by the following fields of technology:

Building Research—Electronic Instrumentation—Technical Analysis—Product Evaluation—Invention and Innovation—Weights and Measures—Engineering Standards—Vehicle Systems Research.

**THE CENTER FOR RADIATION RESEARCH** engages in research, measurement, and application of radiation to the solution of Bureau mission problems and the problems of other agencies and institutions. The Center for Radiation Research consists of the following divisions:

Reactor Radiation—Linac Radiation—Applied Radiation—Nuclear Radiation.

<sup>1</sup> Headquarters and Laboratories at Gaithersburg, Maryland, unless otherwise noted; mailing address Washington, D. C. 20234.

<sup>2</sup> Located at Boulder, Colorado 80302.

<sup>3</sup> Located at 5285 Port Royal Road, Springfield, Virginia 22151.

# NATIONAL BUREAU OF STANDARDS REPORT

NBS PROJECT  
3120641

SEP 30 1968

NBS REPORT  
9923

## FATIGUE FAILURE OF ELECTROFORMED PRINTING PLATES

By

I. J. Feinberg  
Engineering Metallurgy Section  
Metallurgy Division

To

Electrolytic Section  
Bureau of Engraving and Printing  
Washington, D. C.

### IMPORTANT NOTICE

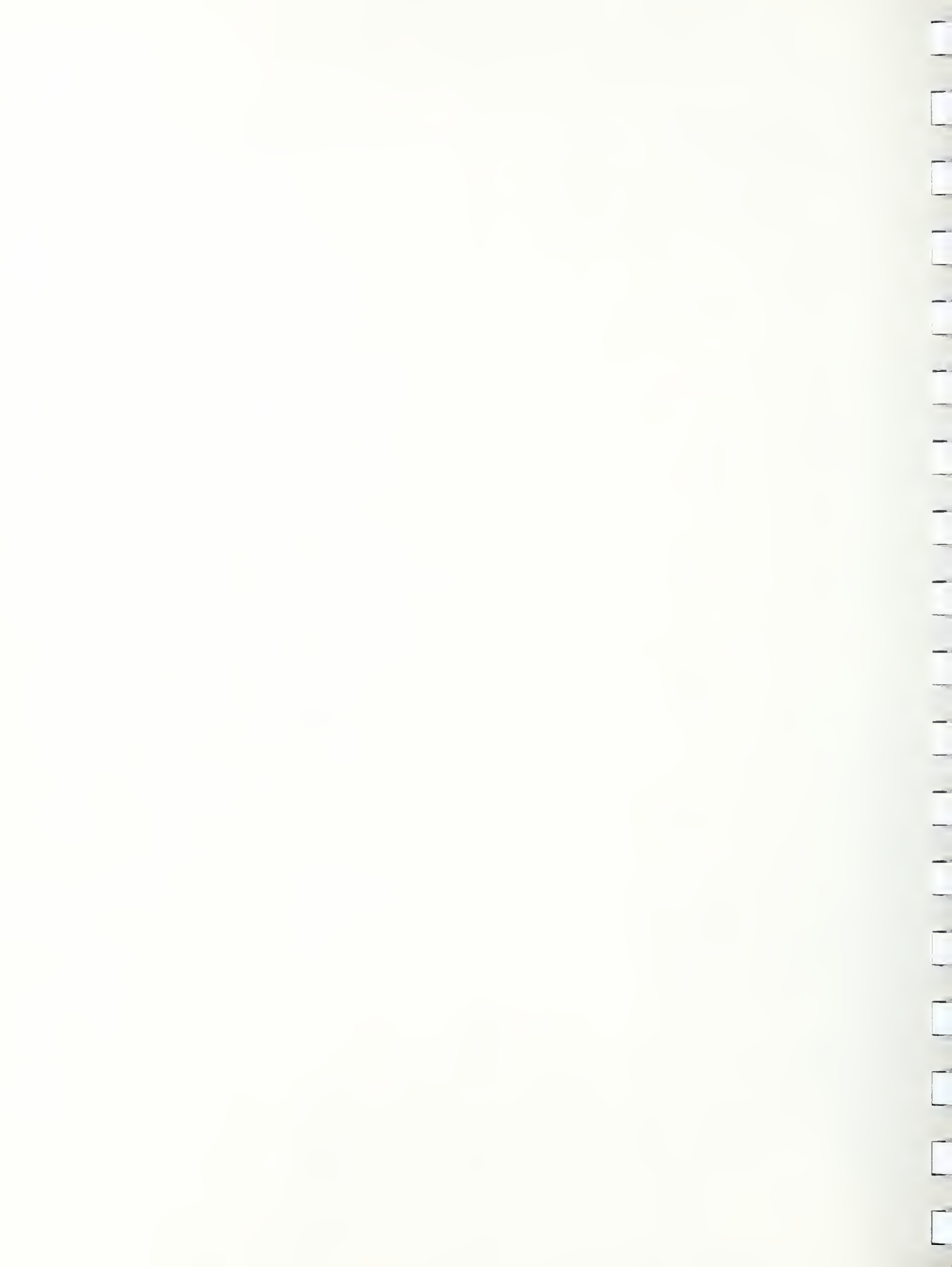
NATIONAL BUREAU OF STANDARDS  
for use within the Government,  
and review. For this reason, the  
whole or in part, is not authorized  
Bureau of Standards, Washington,  
the Report has been specifically

Approved for public release by the  
Director of the National Institute of  
Standards and Technology (NIST)  
on October 9, 2015

These accounting documents intended  
subjected to additional evaluation  
listing of this Report, either in  
the Office of the Director, National  
Bureau of Standards, or by the  
Government agency for which  
copies for its own use.



U.S. DEPARTMENT OF COMMERCE  
NATIONAL BUREAU OF STANDARDS



## Fatigue Failure of Electroformed Printing Plates

Material Submitted: Nine strips removed from electroformed-nickel currency printing plates that had cracked in service were submitted for examination. An investigation was requested because plate failures were being experienced at exceptionally low mileages.

All of the strips contained cracks that were adjacent to and parallel to the bend line in plate Vee bends - bends necessary for adaptation of the plates to the press cylinder. The cracks observed varied in length from approximately one inch in one plate to three-fourths of the plate width in others. A typical view of the general location of the cracks with respect to the plate bend line is shown in Figure 1. Strip identifications and pertinent plating and service life data are given in Table 1. The Bureau of Engraving and Printing (BE&P) requested NBS to determine whether cracking could be attributed to detrimental material conditions or to mechanical factors. BE&P also requested that the mechanical properties of the materials be established for their records and possible future reference.

Visual Examination: All of the strips had grooves made by teeth on plate fastening clamps. The grooves varied in depth and continuity from plate to plate. It was observed that the grooves on the strips from the lowest mileage plates, 40400 and 40421, were shallower than those on the strips from the highest mileage plates, 40364 and 40381.

A cursory examination of the 0.563 inch nominal diameter punched holes in the plate strips indicated a generally greater "out-of-roundness" of the holes in the low mileage plates compared with that in the high mileage plates. In punching the holes, burrs were raised on the reverse face of the plates. These burrs were not removed after punching.

Macroscopic Examination: Figure 2a is a view of the reverse face of a plate section containing a fracture. It shows fretting in the bend line, arrow a, and a continuous line resulting from a polishing action, arrow b. The fracture path is between these lines. Figure 2b is a view of the fracture surface of the section shown in Figure 2a. It has the characteristic features of a fracture surface resulting from fatigue. Its appearance is typical of that observed in all of the fractured plates.

Microscopic Examination: Figures 3a and 3b show the microstructure and fracture profiles of low mileage plate, 40400, and high mileage plate, 40364, respectively. The fine-grained microstructure, Figure 3a, is characteristic of that obtained in a Watts bath and the coarse grained structure, Figure 3b, is characteristic of that obtained in a sulfamate bath. The fracture path shown in Figure 3a is predominantly flat and intergranular while in Figure 3b, it is predominantly transgranular.



Both fractures were initiated by fatigue cracks originating at the obverse (printing) face of the plates. The flat profile of the fracture in Figure 3a is characteristic of material that failed rapidly and in a brittle manner. The fracture of plate 40364, Figure 3b, was accompanied by plastic deformation. The uneven fracture profile is characteristic of a fracture that propagated through shear. Shear fractures are peculiar to material having good ductility.

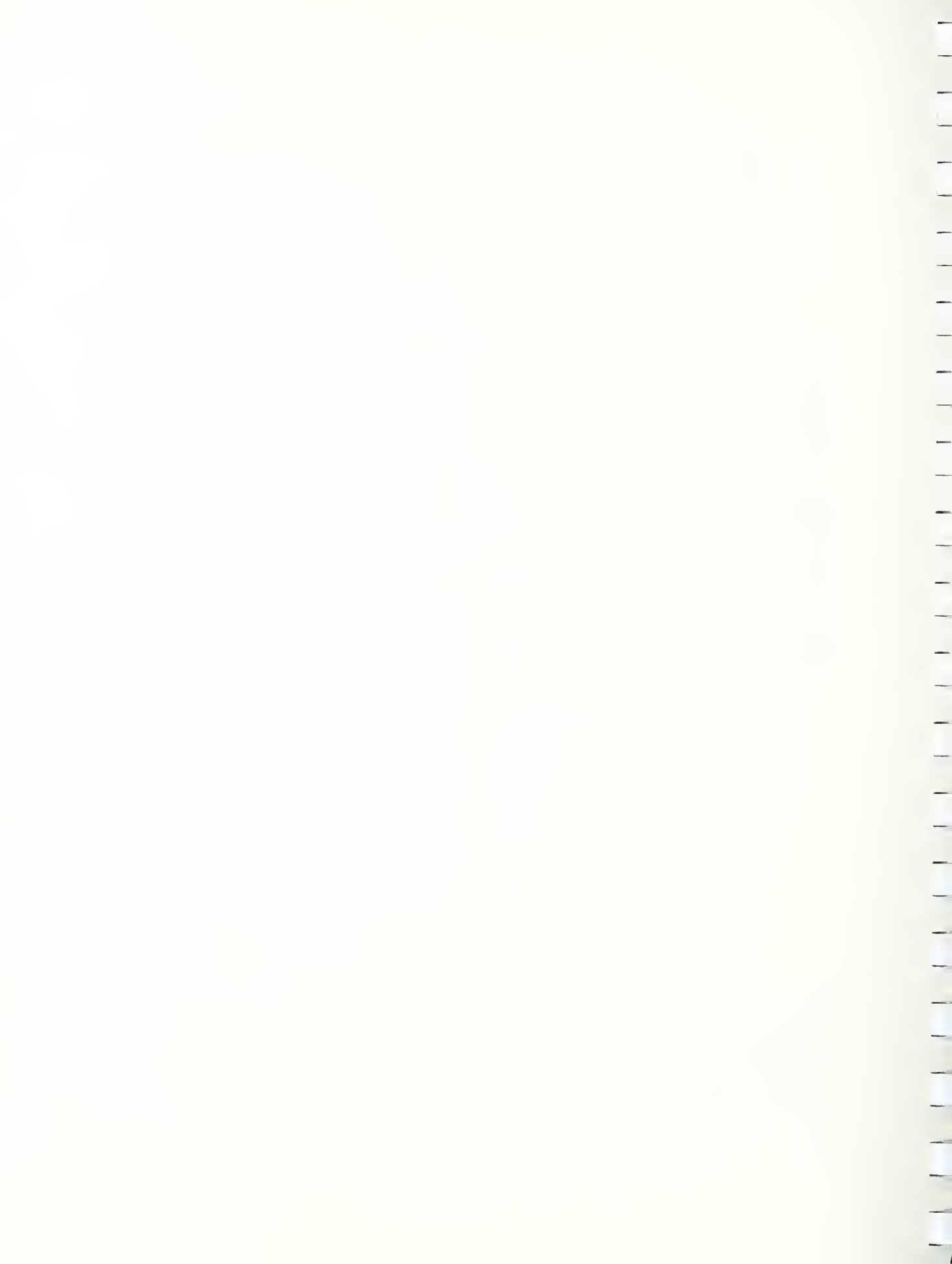
The photomicrographs of secondary cracks in Figure 4 provide a clue as to the mechanism of crack propagation in the subject plates. Figure 4a shows cracks originating at and propagating from the chromium plate-nickel base interface; some of the cracks having propagated to the plating surface and to a lesser degree into the base metal. When the cracks had penetrated the plating completely, notches were created that acted as stress raisers promoting deep penetration of fatigue cracks into the base metal as shown in Figure 4b.

Chemical Analysis: A conventional chemical analysis was conducted on a sample from strip No. 40418 L. A copy of the report is included as addendum 1. The sample contained 99.9 percent nickel. Carbon, copper, iron, sulfur, silicon and cobalt contents were acceptably low. The chemical composition complied with that specified for Type II anode nickel, Federal Specification QQ-A-677, March 22, 1957.

Macrohardness: Macrohardness measurements obtained in chromium-free areas on strip specimens are as follows:

<u>Strip No.</u>	<u>Hardness, Rockwell 15T</u>	
	<u>Printing Face</u>	<u>Back Face</u>
40364 L	89	88.5
40364 T	88	87.5
40377 L	91.5	91.5
40381 L	92	92
40395 L	91	91.5
40400 L	91	91.5
40418 L	93	92.5
40418 T	92	92
40421 L	91.5	92

The hardness range of 88 to 93 Rockwell 15T obtained on strip printing faces and 87.5 to 92.5 Rockwell 15T on back faces results in a considerable spread in related tensile strength. These hardness values converted to tensile strength indicate approximate equivalent tensile strengths ranging from 77,000 to 116,000 psi. There is no correlation between hardness and related tensile strength and mileage. A high mileage, 365,161, was obtained with the softest plate, No. 40364. However, a high mileage, 271,792, was obtained also with one of the harder plates, No. 40381. The mileages obtained from the remaining plates in the tabulation were a small fraction of these values.





Tensile Properties: Tensile test specimens were obtained from areas parallel to and adjacent to the cracks in strips 40364 L, 40381 L, 40400 L and 40418 L. The specimens were prepared with a 0.250 inch width and 2.00 inch gage length in the reduced section. As-received thickness of the strips was maintained in the machined tensile test specimens. Tensile properties obtained are given in Table 2.

The tensile strengths given in Table 2 are absolute values and therefore more reliable for purposes of comparison than those obtained from a hardness relationship. Plate 40364, which yielded a superior mileage, had the lowest yield strength and ultimate tensile strength, and a percent elongation (ductility) roughly twice as great in comparison with the other plates. However, plate 40381 which also provided a comparatively high mileage had tensile properties more closely related to that of the low mileage plates listed in Table 2.

Discussion and Conclusions: Failure of the subject plates is attributed to fatigue. It appears that cracks could have been initiated in the chromium plating adjacent to plate bend lines when the bends were formed. These cracks created notches that acted as stress raisers. The presence of polishing and fretting on the printing plates indicates that there was relative motion between plates and press cylinder during press operation. This motion was attended by cyclic bending stresses of such magnitude as to favor the propagation of fatigue cracks starting from the root of the cracks in the chromium plating and progressing through the nickel base.

With respect to material properties, analysis of samples revealed an acceptable chemical composition and microstructure. From the material examined it is felt that differences in material properties can be ruled out in seeking the reasons for the comparatively short life of some of the plates. The same ruling applies to differences in the electrolyte used, sulfamate or Watt's bath. Plate 40364, which had a long service life, was made in a sulfamate bath. It had a comparatively low hardness, low yield strength, low tensile strength and good ductility. Plate 40381 which also had a long service life, was made in a Watt's bath. It had comparatively high hardness, high yield and tensile strengths and only fair ductility. It is considered that efforts to improve printing plate service life should be concentrated on plate fabrication procedures, on plate alignment and on press cylinder adjustments and lubrication.



Recommendations: In line with NBS observations and discussions with Bureau of Engraving and Printing personnel the following recommendations are made:

1. If possible, look for elimination in cracking of the chromium plating by forming plate bends before chromium plating of the printing plates rather than after.
2. Check printing plate bends for conformance with mating cylinder lips and make what adjustments are possible to minimize relative motion between the printing plate and the press cylinder.
3. Keep plate clamp teeth sufficiently sharp and tighten clamps so that all plates are adequately and uniformly gripped on the printing cylinder.
4. Consider whether plate fastening hole "out-of-roundness" and burrs raised by hole punching have a detrimental effect on plate seating.
5. Continue Bureau of Engraving and Printing lubrication experimentation.
6. Roll shallow grooves approximately 0.015 inch deep into the obverse face of the currency plates. The grooves should be approximately 0.25 inch wide and blend gently into the plates. They should be so located that the groove median should coincide with the observed path made by fatigue cracks in the leading and trailing ends of the plates, respectively.



Table 1. Identification of Electroformed Plate Test Strips

<u>Strip Number</u> <sup>1</sup>	<u>BE&amp;P Plating Tank</u>	<u>Bath Type</u>	<u>Plate Mileage (Impressions Obtained)</u>
40364 L	W	Sulfamate-Nickel	365,161
40364 T	W	" "	365,161
40377 L	3	Watts-Nickel	66,964
40381 L	3	" "	271,792
40395 L	3	" "	26,626
40400 L	3	" "	24,805
40418 L	3	" "	36,543
40418 T	3	" "	36,543
40421 L	3	" "	25,249

<sup>1</sup> Suffixes L and T for the numbers indicate that the strips were cut from the leading end or the trailing end, respectively, of a given numbered plate.

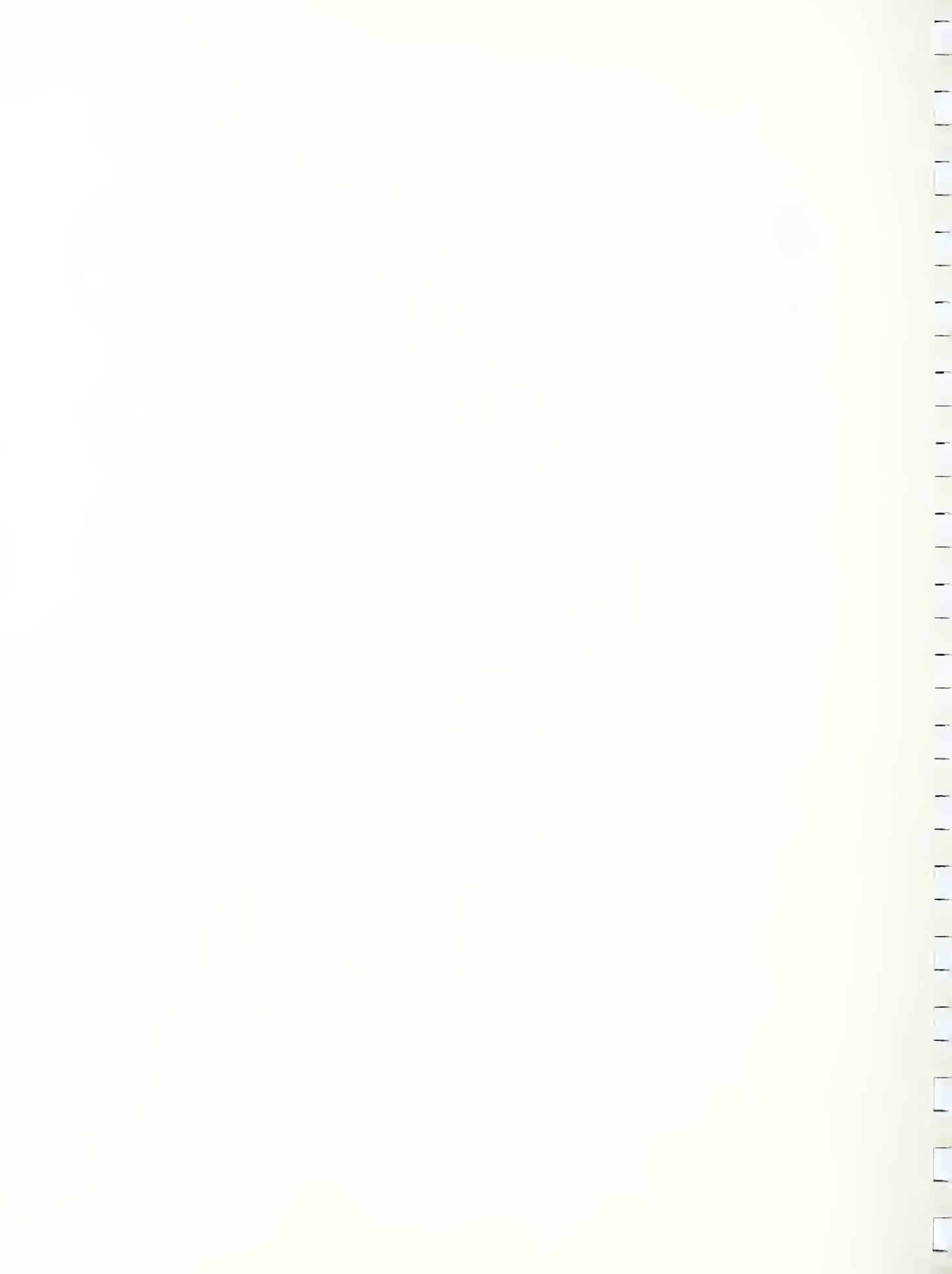
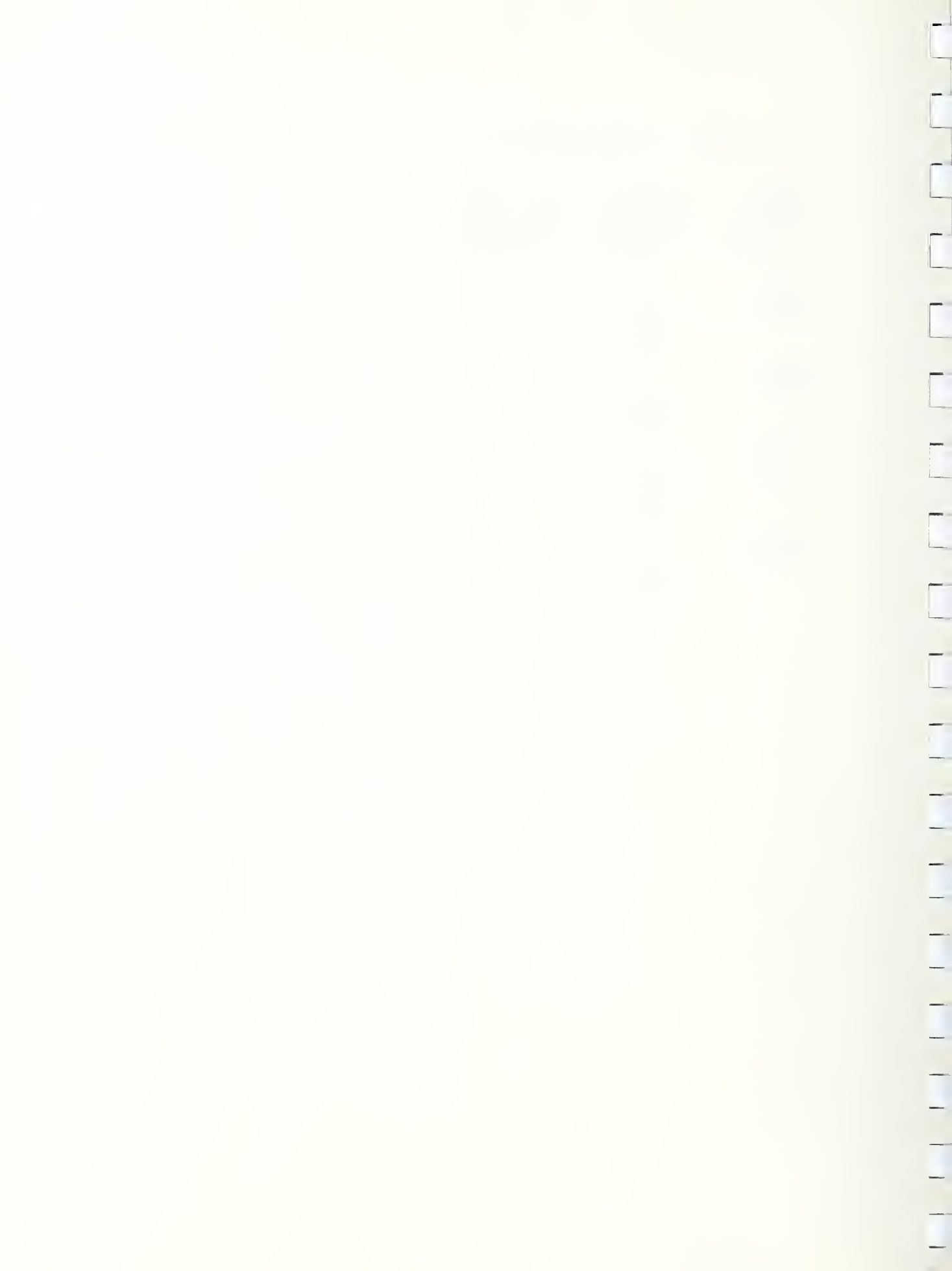
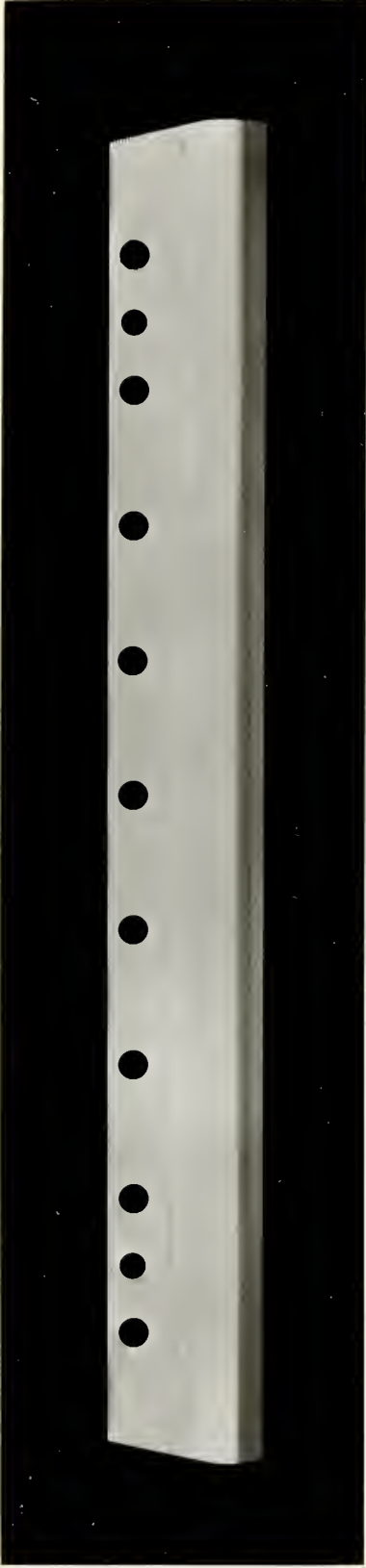


Table 2. Tensile Properties of Electroformed Plate Material

<u>BE&amp;P Strip No.</u>	<u>Specimen Number</u>	<u>Yield Strength 0.20% Offset psi</u>	<u>Ultimate Tensile Strength psi</u>	<u>Elongation in 2 inches %</u>
40364 L	1	45,500	70,800	20.0
40364 L	2	45,700	71,300	21.5
	Avg.	45,600	71,050	20.5
40381 L	1	64,400	94,200	12.5
40381 L	2	65,100	97,300	12.5
	Avg.	64,750	95,750	12.5
40400 L	1	63,900	94,400	13.0
40400 L	2	70,700	103,900	10.0
	Avg.	67,300	99,150	11.5
40418 L	1	74,500	107,700	10.1
40418 L	2	67,800	100,000	10.8
	Avg.	71,150	103,850	10.5







a.



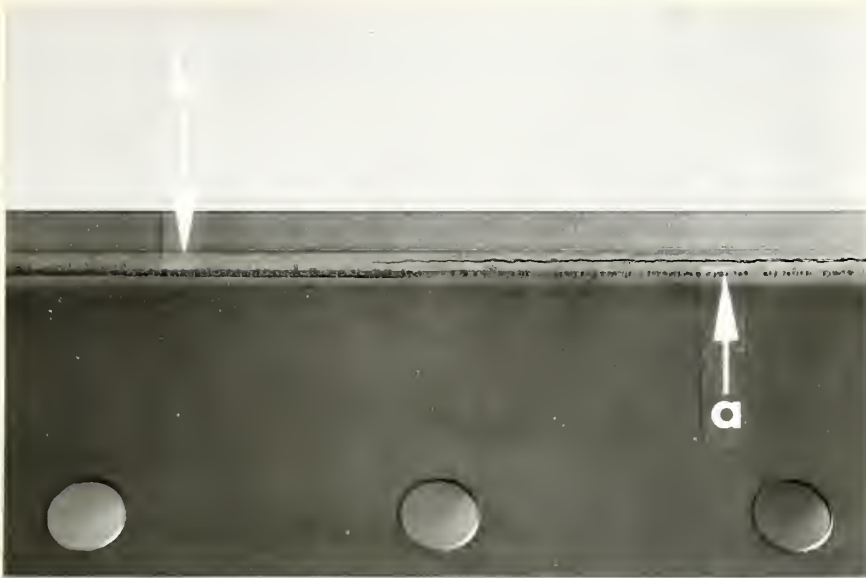
b.

Figure 1. Strip from printing plate No. 40395. The location of the cracks with respect to the plate-bend line is typical of that observed in all of the strips examined.

a. Obverse face. X 1/4

b. Reverse face. X 1/4





a



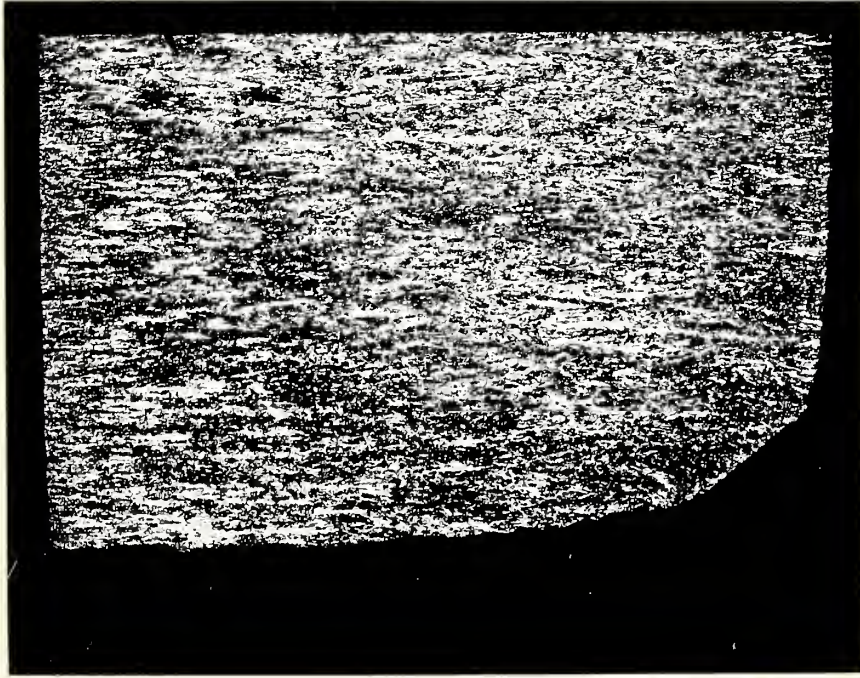
b

Figure 2a. Reverse face of a section of strip No. 40418 L. Arrow, a, points to fretting in the bend line. Arrow, b, points to a continuous line that resulted from a polishing action. Note that the fracture path is between these lines. X 2/3

Figure 2b. Fracture surface of the fracture shown in Figure 2a. The surface is characteristic of that resulting from fatigue. X 4

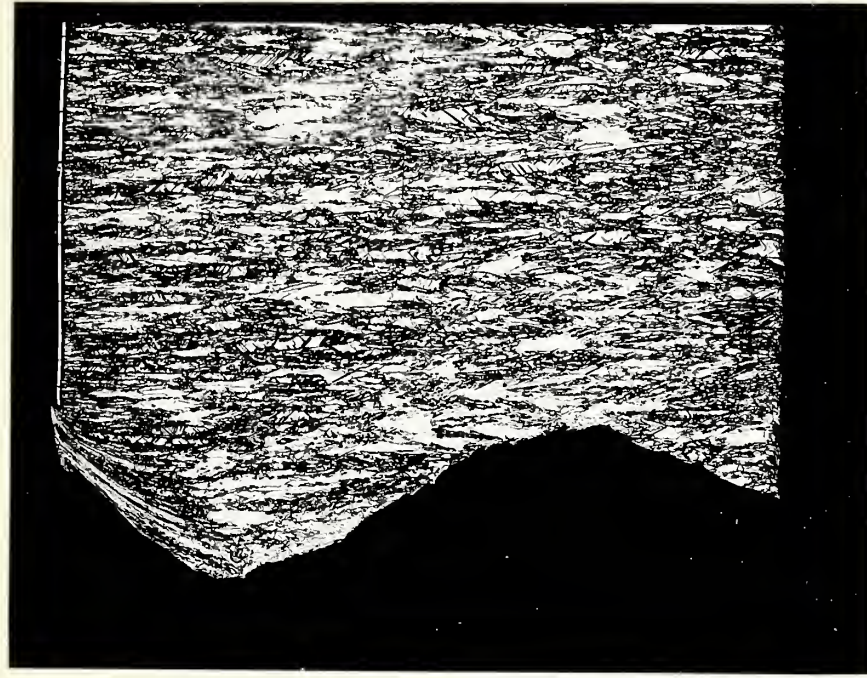


PRINTING FACE



a.

PRINTING FACE

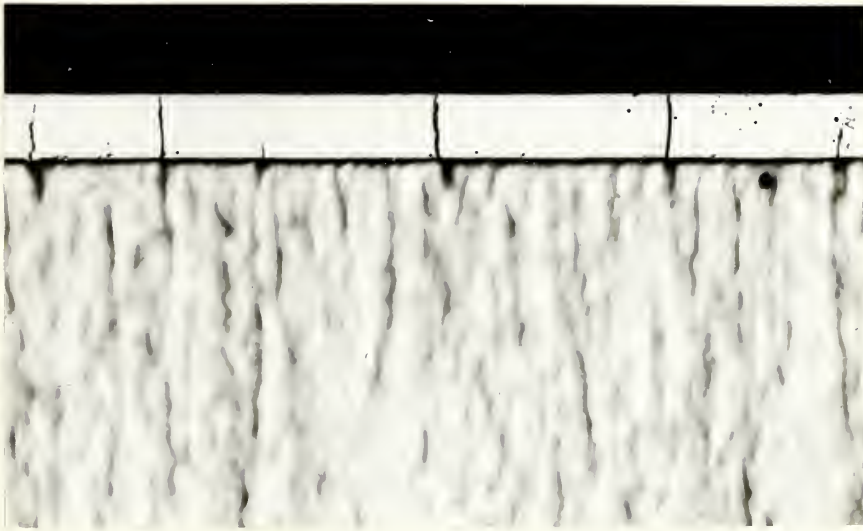


b.

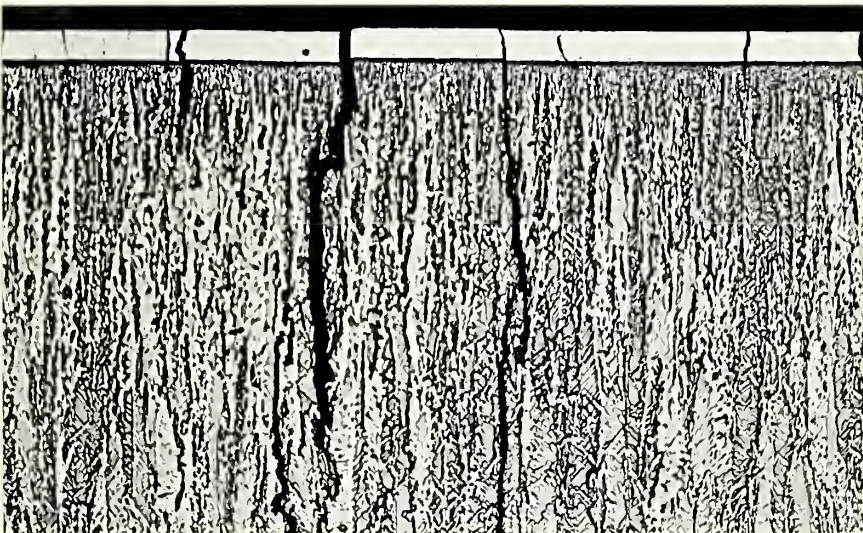
Figure 3. Microstructures and fracture profiles representative of two plates. Fractures were initiated at the obverse (printing) face (at the upper left hand corner in both photomicrographs). Etched with Carapella's reagent. X 100

- a. Plate 40400 produced in Watts bath.
- b. Plate 40364 produced in sulfamate bath.





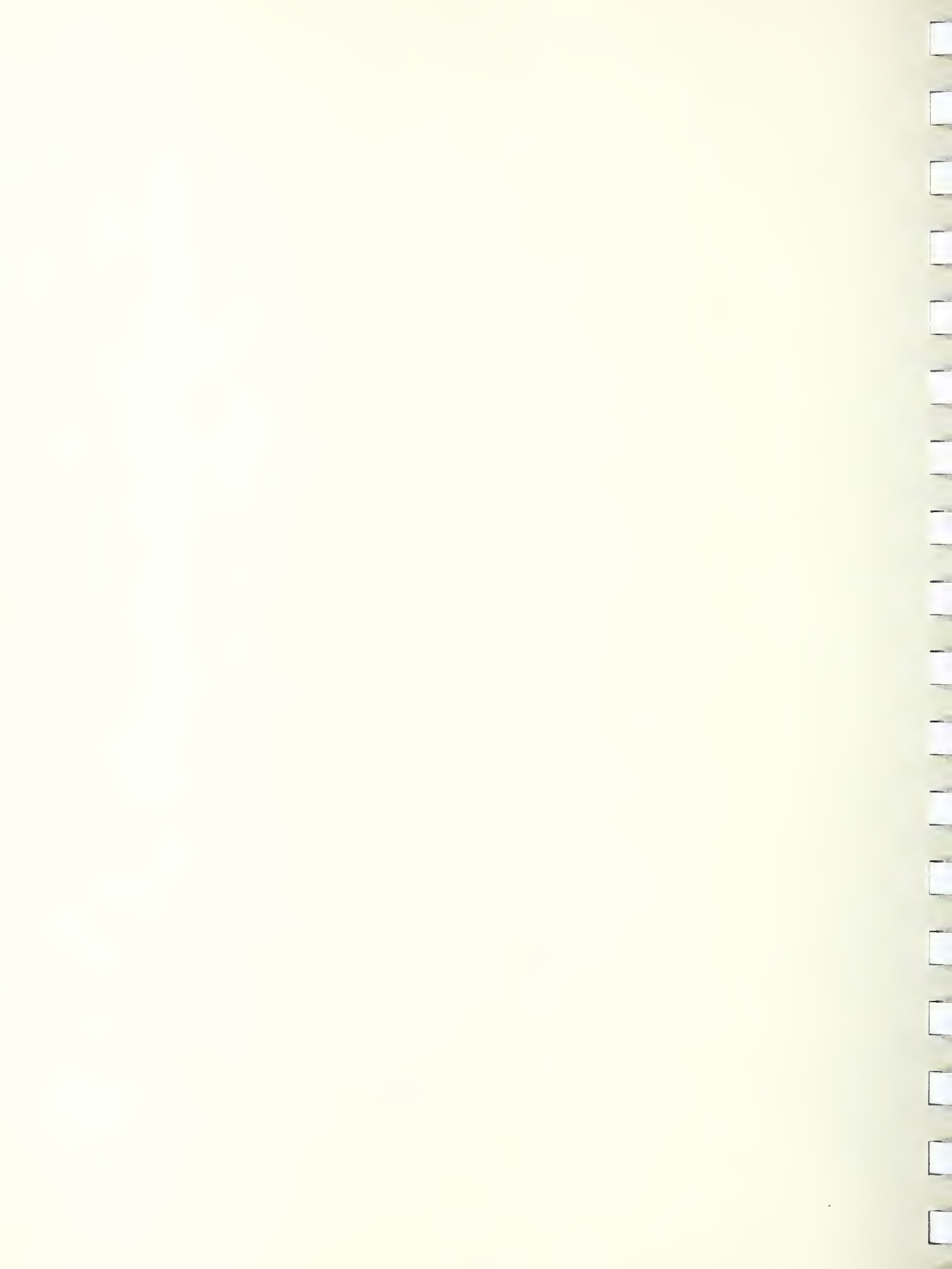
a



b

Figure 4. Typical secondary cracks adjacent to a fracture.

- a. Cracks in the chromium plate (white) appear to have been initiated at the interface of the plate and nickel base. Etched with Carapella's reagent. X 1000
- b. Cracks in the chromium plate have propagated to the plating surface and into the nickel base. Etched with Carapella's reagent. X 500





VALUE ENGINEERING COMPANY  
 Materials Evaluation Laboratory  
 2316 Jefferson Davis Highway  
 Alexandria, Virginia 22301

CERTIFICATE OF TEST RESULTS

Material ..... Nickel (Strip No. 40418 L) ..... No. of Samples ..... 1 .....  
 Submitted By ..... National Bureau of Standards ..... Date Submitted ..... 8/16/68 .....  
 Tests Performed ..... Chemical analysis .....

CHEMICAL ANALYSIS

Al .....	Mg .....	Pb .....	Zn .....
C ..... 0.0072 .....	Mn .....	S ..... 0.004 .....	Co ..... 0.006 .....
Cr .....	Mo .....	Si < 0.002 .....	.....
Cu ..... 0.004 .....	Ni ..... 99.9 .....	Sn .....	.....
Fe ..... 0.008 .....	P .....	Ti .....	.....

Analysis Performed By ..... In accordance with .....

TENSILE TEST

Sample No.	Yield Strength, psi	Tensile Strength, psi	Per Cent Elongation in...Inches	Per Cent Reduction In Area

Test Conducted By ..... In accordance with .....

HARDNESS

Sample or Position No.	Hardness .....	Sample or Position No.	Hardness .....

Test Conducted By ..... In accordance with .....

Comments .....

Approved By ..... *H. P. Weinberg*  
 H. P. Weinberg  
 Laboratory Director

Date .. August 22, 1968 .....





