

NATIONAL BUREAU OF STANDARDS REPORT

NBS Project

3300

March 21, 1954

NBS Report

3150

Construction Details
for
the Modification
of
AN/AV-28 Aircraft Searchlight

Part 2

by

T. H. Proctor
J. A. Lefebvre
J. W. Lane

T. H. Proctor
J. A. Lefebvre
J. W. Lane

Naval Aircraft Lighting Group
Photometry and Colorimetry Section
National Bureau of Standards
Washington, D. C.

Sponsored by

Bureau of Aeronautics, 11-22
Department of the Navy
Washington, D. C.



U. S. DEPARTMENT OF COMMERCE NATIONAL BUREAU OF STANDARDS

This report is issued for
production in any form
writing is obtained from
Washington 25, D. C.

Approved for public release by the
Director of the National Institute of
Standards and Technology (NIST)
on October 9, 2015

tion, reprinting, or re-
ited unless permission in
nal Bureau of Standards,

Construction Details
for
NBS Modification
of
AN/AVQ-2A Aircraft Searchlight

A modification kit for the AN/AVQ-2A aircraft searchlight, incorporating a number of changes in the searchlight, principally in connection with the means for automatic maintenance of focus, was developed by the Naval Aircraft Lighting Group at the National Bureau of Standards in the Fall of 1951. A general description of this kit together with instructions for installation was contained in NBS Report 1354, "Instruction Book for Modification of the AVQ-2A Aircraft Searchlight, (Revised October, 1952)".

The purpose of the present report is to provide detailed information as to the construction of the various components of the kit, to assist bidders or contractors proposing to supply this equipment to the Bureau of Aeronautics of the Department of the Navy.

A list of the various components of the kit, to be supplied by the contractor, except where otherwise specified, together with detailed drawings as required, follows.

UNITED STATES
DEPARTMENT OF JUSTICE
WASHINGTON, D. C.
OFFICE OF THE ATTORNEY GENERAL

The following is a list of the names of the persons who have been appointed to the various positions in the Department of Justice, and who are now serving in such positions. The names are given in alphabetical order of their last names. The names of the persons who have been appointed to the positions of Assistant Attorney General are given in italics. The names of the persons who have been appointed to the positions of Counselor at Law are given in boldface type. The names of the persons who have been appointed to the positions of Deputy Assistant Attorney General are given in regular type. The names of the persons who have been appointed to the positions of Special Counsel are given in small caps. The names of the persons who have been appointed to the positions of Special Counselor are given in all caps.

The names of the persons who have been appointed to the positions of Assistant Attorney General are given in italics. The names of the persons who have been appointed to the positions of Counselor at Law are given in boldface type. The names of the persons who have been appointed to the positions of Deputy Assistant Attorney General are given in regular type. The names of the persons who have been appointed to the positions of Special Counsel are given in small caps. The names of the persons who have been appointed to the positions of Special Counselor are given in all caps.

A list of the names of the persons who have been appointed to the positions of Assistant Attorney General is given in italics. The names of the persons who have been appointed to the positions of Counselor at Law are given in boldface type. The names of the persons who have been appointed to the positions of Deputy Assistant Attorney General are given in regular type. The names of the persons who have been appointed to the positions of Special Counsel are given in small caps. The names of the persons who have been appointed to the positions of Special Counselor are given in all caps.

MODIFICATION KIT
 AIRCRAFT SEARCHLIGHT AN/ANQ-2A

PART NO.	DESCRIPTION	QUANTITY
14	WASHER, machine, #6, for mounting brush (26) Material: brass	2
15	SLIDER STOP (see drawing #3156-15) Material: stainless steel AISI Type 302	1
17	SLIDER (not supplied by contractor) (see drawing #3156-17)	
18	DOWNER, with three screws (see drawing #3156-18) Material: Downer; copper Screws; stainless steel AISI Type 302, two 6-32 x 3/8, one 6-32 x 5/8	1
22	OBSCURATOR-ROBE (see drawing #3156-22) Material: cavity-free, electrolytic tough-pitch copper	1
23	WASHER, insulating (8 required, 8 spares) (see drawing #3156-23) Material: Lava, grade #1 M. Firestone & Co. Brooklyn, N.Y.	16
24	CLAMP, with screw and lock washer (see drawing #3156-24) Material: stainless steel AISI Type 302	8
26	BRUSH CONTACT (see drawing #3156-26) Material: phosphor bronze	1
29	SCREW, for mounting brush (26), 6-32x3/8, blading head Material: stainless steel, AISI Type 302	2
30	BUSHING, insulating, to separate brush (26) from frame (see drawing #3156-30, 31) Material: Tantalite	2
31	WASHER, insulating, for use with insulating bushing (30) (see drawing #3156-30, 31) Material: Tantalite	2
32	INSULATOR, to separate obturator-robe (22) from positive contact assembly (see drawing #3156-32) Material: clear Polycarbonate disc	1

THE UNIVERSITY OF
MICHIGAN LIBRARY

DATE	DESCRIPTION	PAGE
1	1887-1888	10
2	1889-1890	22
3	1891-1892	34
4	1893-1894	46
5	1895-1896	58
6	1897-1898	70
7	1899-1900	82
8	1901-1902	94
9	1903-1904	106
10	1905-1906	118
11	1907-1908	130
12	1909-1910	142

PART NO.	DESCRIPTION	QUANTITY
13	SCREW, for securing solenoid-rod (12) to positive contact assembly, 10-32, flat head, two 1 3/4" long and two 2 1/4" long Material: stainless steel AISI Type 302	4
14	WASHER, insulating, for screws (13), four required, two spaced (see drawing #3156-14) Material: Lava, grade "A" H. Firebarger & Co. Brooklyn, N.Y.	4
16a	SPACER AND INSULATOR, for positive drive and positive contact assembly, two required, two spaced (see drawing #3156-16a) Material: Lava, grade "A" H. Firebarger & Co. Brooklyn, N.Y.	2
16b	INSULATOR, negative assembly, two required, two spaced (see drawing #3156-16b) Material: Lava, grade "A" H. Firebarger & Co. Brooklyn, N.Y.	2
17	RELAY BOX, containing relays K59 & K63 (see Hartman Electrical Mfg. Co. drawing #A532, NBS drawing #3156-17)	1
56	SPRING, donor (see drawing #3156-56) Material: .059 steel music wire, cadmium plated	1
57	SCREW, binding head and lock washer for mounting brace (65), 1/4-20 x 5/8 Material: stainless steel AISI Type 302	2
65	BRACE, connects positive contact assembly to positive drive assembly (see drawing #3156-65) Material: brass, half-hard	1
66a	RELAY, contactor, Model A-75 ^D , Hartman Elec. Mfg. Co., Mansfield, Ohio. (See Hartman Dwg. A-754D, NBS Dwg. 3156-K64)	1

NBS Dwg. 3156-15
 100% S. A. 10/17
 YES MOUNTING
 PARTS LIST 10/17

PART # 15
 SLIDEN STOP

RABOS - 152

AISI Type 302

MATERIAL: STAINLESS STEEL

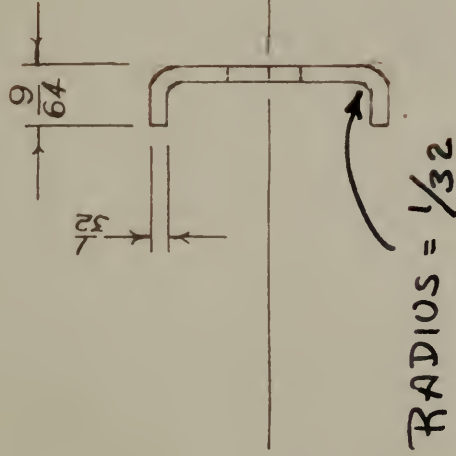
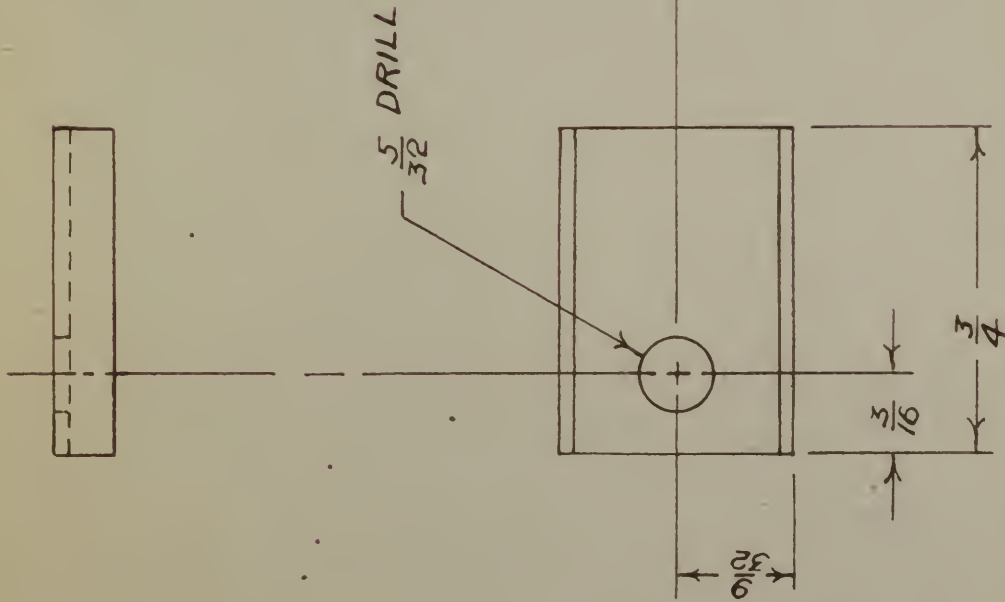
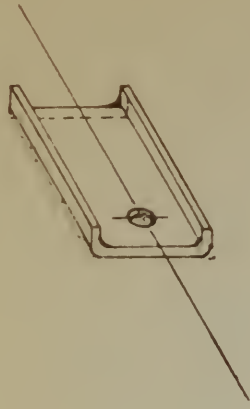
100% S. A. 10/17
 YES MOUNTING
 PARTS LIST 10/17

INDEX

CONTENTS

1	THE HISTORY OF THE UNITED STATES	1
2	THE HISTORY OF THE UNITED STATES	2
3	THE HISTORY OF THE UNITED STATES	3
4	THE HISTORY OF THE UNITED STATES	4
5	THE HISTORY OF THE UNITED STATES	5
6	THE HISTORY OF THE UNITED STATES	6
7	THE HISTORY OF THE UNITED STATES	7
8	THE HISTORY OF THE UNITED STATES	8
9	THE HISTORY OF THE UNITED STATES	9
10	THE HISTORY OF THE UNITED STATES	10
11	THE HISTORY OF THE UNITED STATES	11
12	THE HISTORY OF THE UNITED STATES	12
13	THE HISTORY OF THE UNITED STATES	13
14	THE HISTORY OF THE UNITED STATES	14
15	THE HISTORY OF THE UNITED STATES	15
16	THE HISTORY OF THE UNITED STATES	16
17	THE HISTORY OF THE UNITED STATES	17
18	THE HISTORY OF THE UNITED STATES	18
19	THE HISTORY OF THE UNITED STATES	19
20	THE HISTORY OF THE UNITED STATES	20
21	THE HISTORY OF THE UNITED STATES	21
22	THE HISTORY OF THE UNITED STATES	22
23	THE HISTORY OF THE UNITED STATES	23
24	THE HISTORY OF THE UNITED STATES	24
25	THE HISTORY OF THE UNITED STATES	25
26	THE HISTORY OF THE UNITED STATES	26
27	THE HISTORY OF THE UNITED STATES	27
28	THE HISTORY OF THE UNITED STATES	28
29	THE HISTORY OF THE UNITED STATES	29
30	THE HISTORY OF THE UNITED STATES	30
31	THE HISTORY OF THE UNITED STATES	31
32	THE HISTORY OF THE UNITED STATES	32
33	THE HISTORY OF THE UNITED STATES	33
34	THE HISTORY OF THE UNITED STATES	34
35	THE HISTORY OF THE UNITED STATES	35
36	THE HISTORY OF THE UNITED STATES	36
37	THE HISTORY OF THE UNITED STATES	37
38	THE HISTORY OF THE UNITED STATES	38
39	THE HISTORY OF THE UNITED STATES	39
40	THE HISTORY OF THE UNITED STATES	40
41	THE HISTORY OF THE UNITED STATES	41
42	THE HISTORY OF THE UNITED STATES	42
43	THE HISTORY OF THE UNITED STATES	43
44	THE HISTORY OF THE UNITED STATES	44
45	THE HISTORY OF THE UNITED STATES	45
46	THE HISTORY OF THE UNITED STATES	46
47	THE HISTORY OF THE UNITED STATES	47
48	THE HISTORY OF THE UNITED STATES	48
49	THE HISTORY OF THE UNITED STATES	49
50	THE HISTORY OF THE UNITED STATES	50

THE HISTORY OF THE UNITED STATES (See German Rev. 4-124)
 THE HISTORY OF THE UNITED STATES (See German Rev. 4-124)



DIMENSIONS IN INCHES
 TOLERANCES
 (UNLESS OTHERWISE SPECIFIED)
 DECIMALS ±.005
 FRACTIONS ±.015
 ANGLES ± 1/2°

AISI TYPE 302
 MATERIAL: STAINLESS STEEL

NBS DWG. No 3156-15
 AVQ-2A SEARCHLIGHT
 NBS MODIFICATION
 REF: NBS REPORT 1354

NATIONAL BUREAU OF STANDARDS
 WASHINGTON 25, D. C.

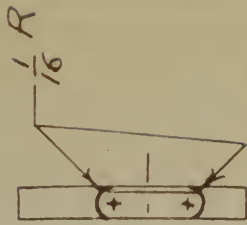
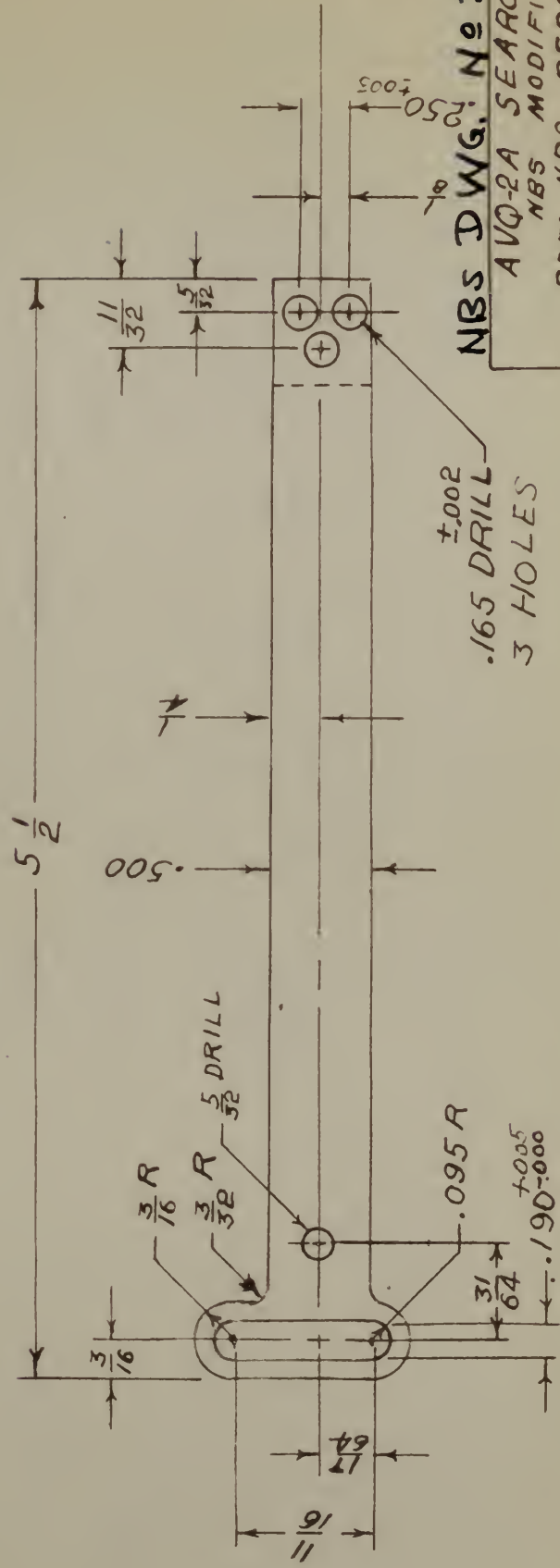
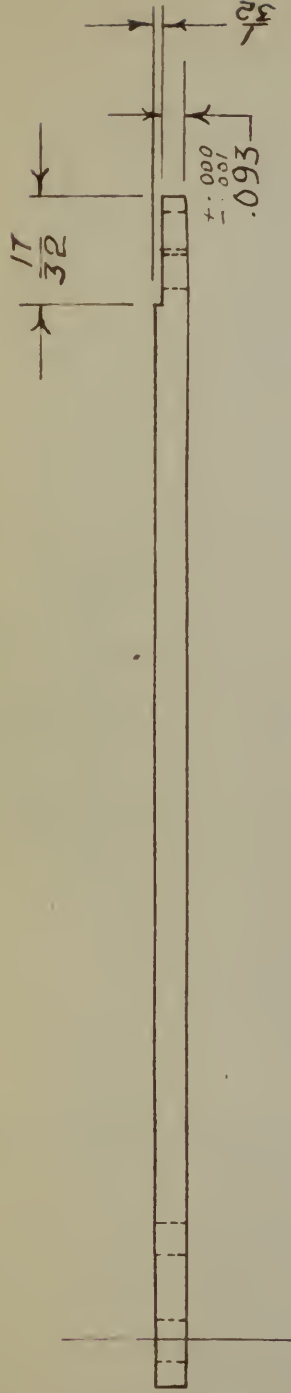
DRAFTSMAN
 W.F.M
 DIV SEC
 2 - 1

DATE
 8-8-52

SCALE
 2/1

PART # 15
 SLIDER STOP

NOT SUPPLIED BY CONTRACTOR



NBS DWG. No 3156-17
 AVQ-2A SEARCHLIGHT
 NBS MODIFICATION
 REF: NBS REPORT 1354

NATIONAL BUREAU OF STANDARDS
 WASHINGTON 25, D. C.

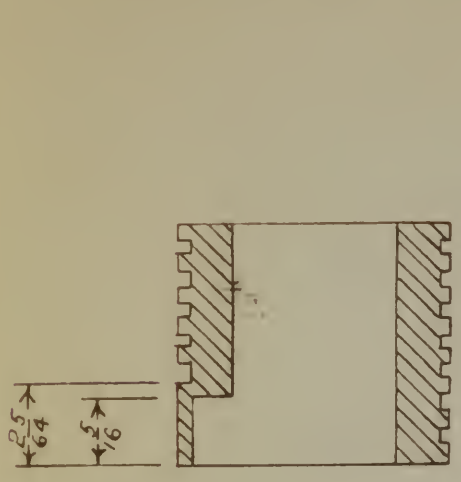
DRAFTSMAN W.F.M.
 DATE 8-12-52
 SCALE 1/1

DIV SEC
 2 - 1
 PART # 17
 SLIDER

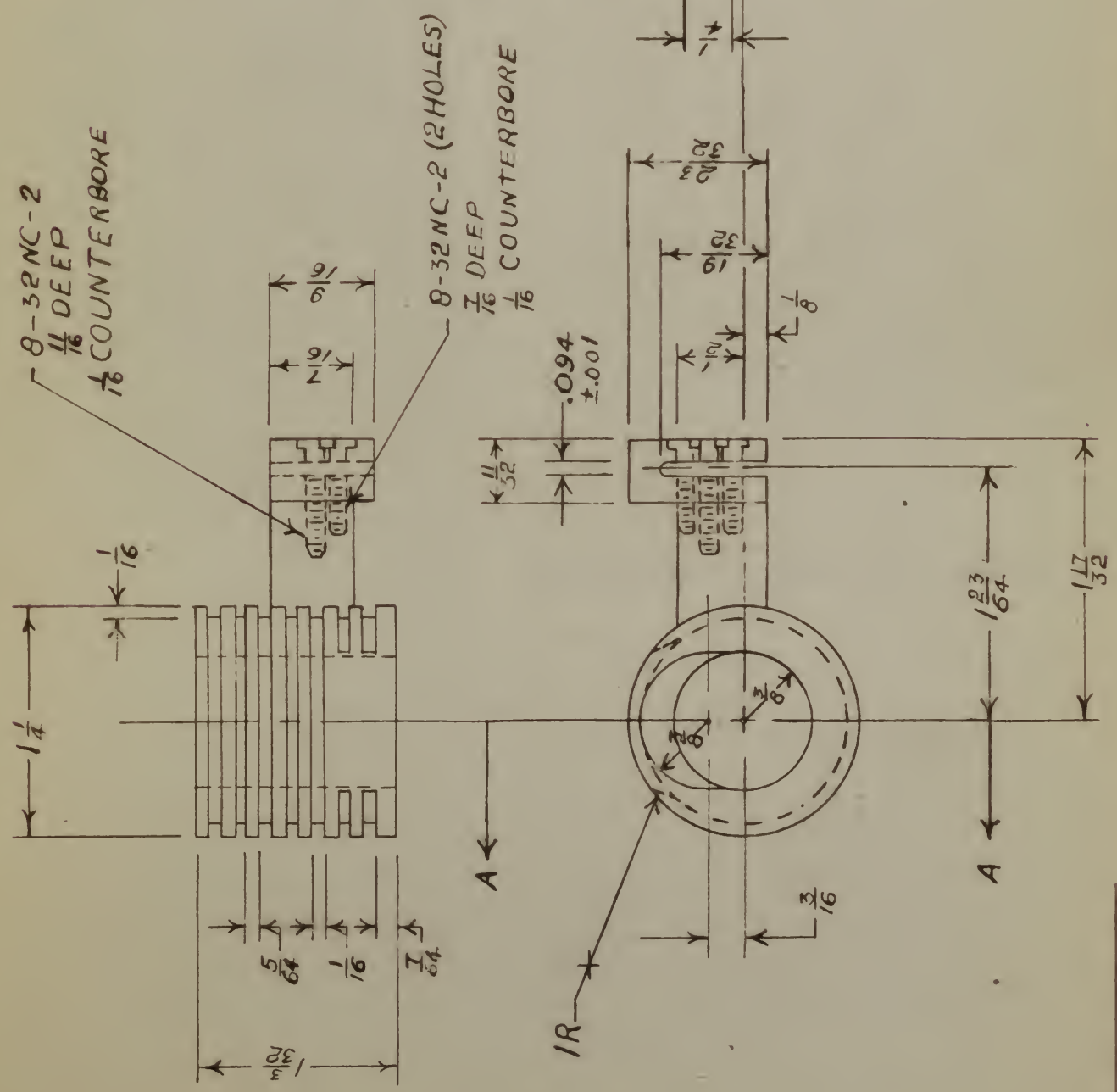
.125 THICK

GOVT. SPECT: ANQQ-5-75T
 TRADE NAME: S-SLS TY. 347
 MATERIAL: CORR. RES. STEEL

DIMENSIONS IN INCHES
 TOLERANCES
 UNLESS OTHERWISE SPECIFIED
 DECIMALS ±.005
 FRACTIONS ±.015
 ANGLES ± 1/2



SECTION AA



8-32 NC-2
1/16 DEEP
1/16 COUNTERBORE

8-32 NC-2 (2 HOLES)
1/16 DEEP
1/16 COUNTERBORE

NBS DWG. NO 3156-18

AVQ-2A SEARCHLIGHT
NBS MODIFICATION
REF: NBS REPORT 1354

NATIONAL BUREAU OF STANDARDS
WASHINGTON 25, D. C.

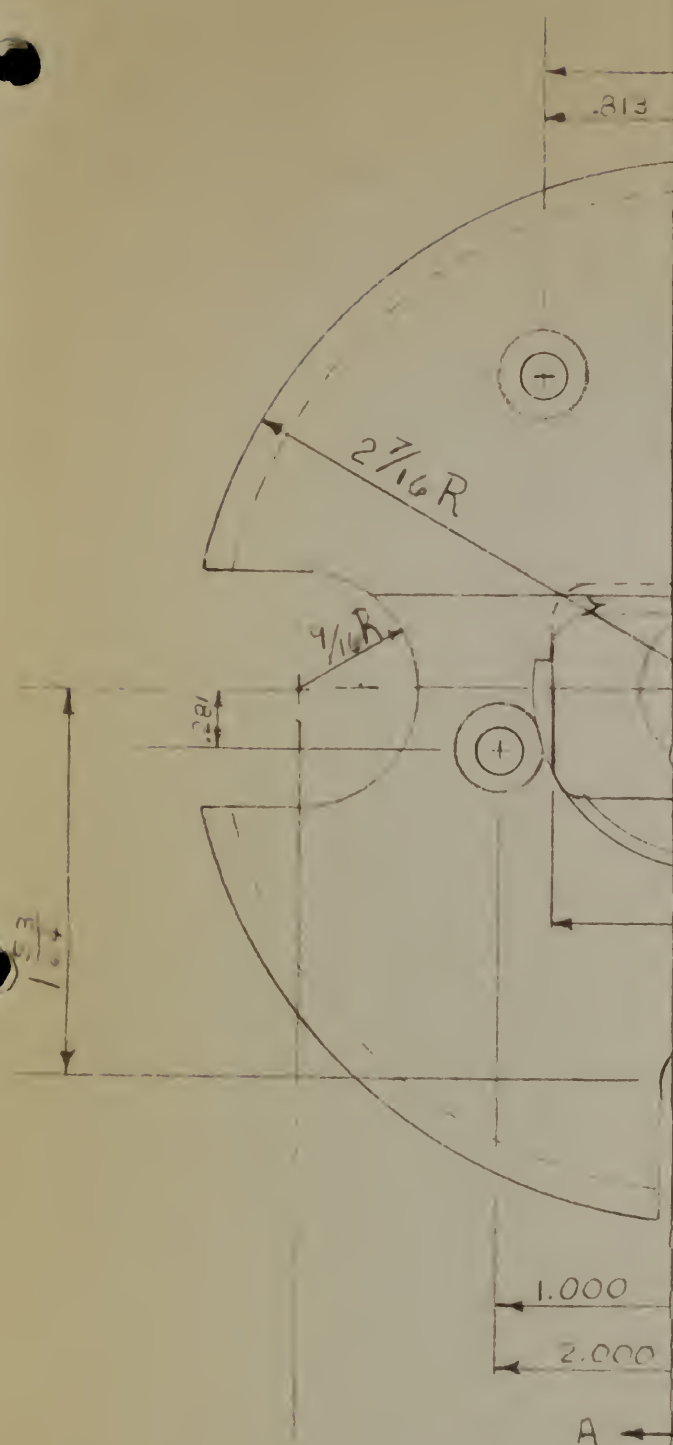
DRAFTSMAN	DATE	SCALE
W.F.M	10-4-51	1:1
DIV SEC	PART #18	DOUSER
2 1		

DIMENSIONS IN INCHES
TOLERANCES
(unless otherwise specified)
DECIMALS ±.005
FRACTIONS ±.015
ANGLES ± 1/2°

~~CASE~~
MATERIAL: COPPER
THERMAL CONDUCTIVITY AT LEAST 2.0 WATT-CM/CM²C

A

REVISIONS			
NO.	E. C. N.	CHANGE	DATE
1			
2			
3			
4			



FRONT

NBS DWG. No 3156-22

REF: NBS REPORT 1354

PIECE NO.	NOMENCLATURE	NO. REQ'D
-----------	--------------	-----------

NATIONAL BUREAU OF STANDARDS
WASHINGTON 25, D. C.

OBTURATOR - PROBE

FOR - AVQ-2A SEARCHLIGHT

MODEL	TYPE	SCALE 1:1
DIMENSIONS IN INCHES (Unless otherwise specified)	DRAFTSMAN J.A.L.	CHECKER
TOLERANCES (Unless otherwise specified)	PROJECT ENGR.	PROJECT ENGR.
DECIMALS ±.005	SUBMITTED BY	
FRACTIONS ±.015	CHIEF, SEC.	
ANGLES ±1/2°	EXAMINED BY	
DO NOT SCALE THIS PRINT	CHIEF ENGINEER	

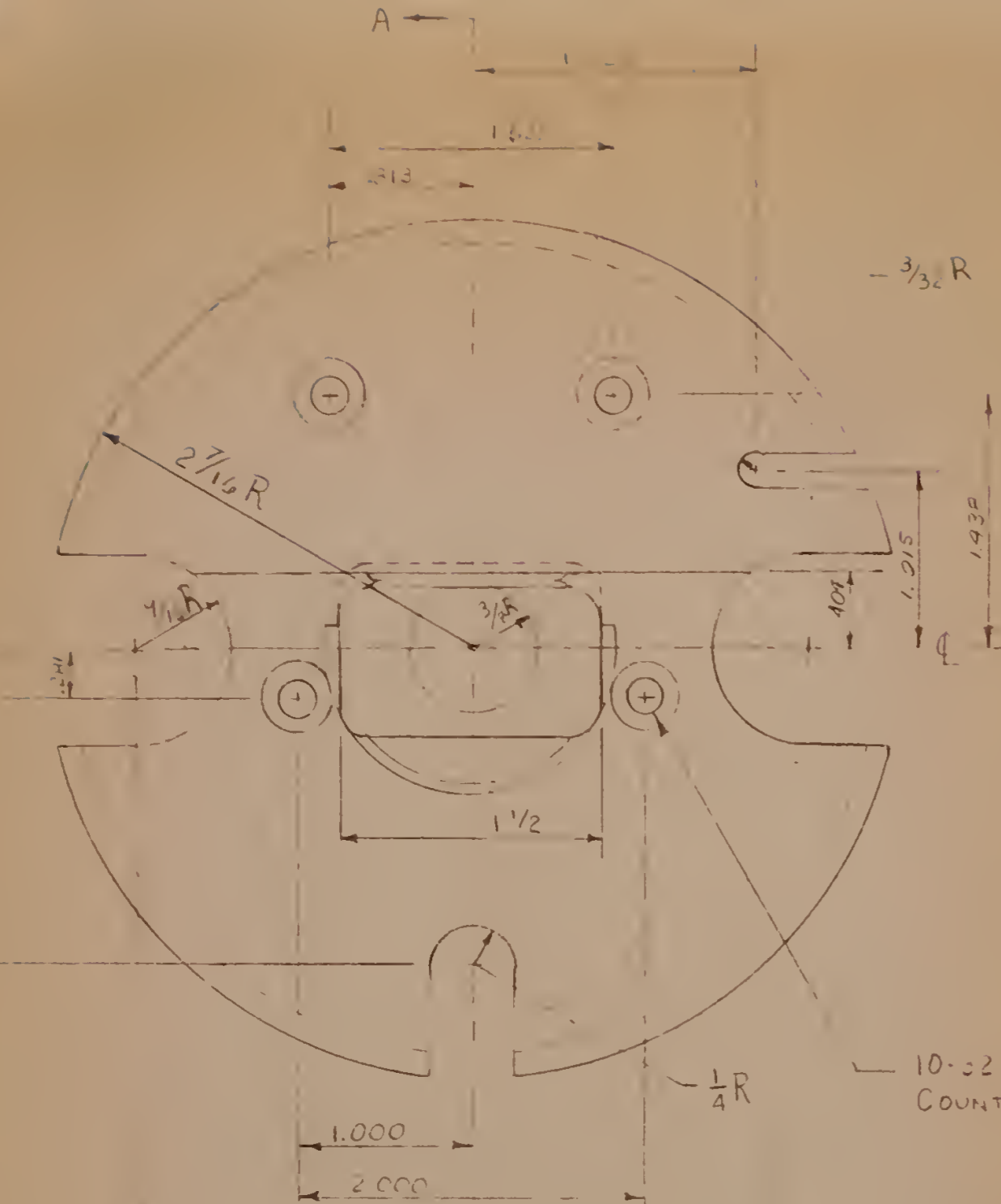
DIV. SEC.	THIS PRINT ISSUED	APPROVED BY
-----------	-------------------	-------------

2.1

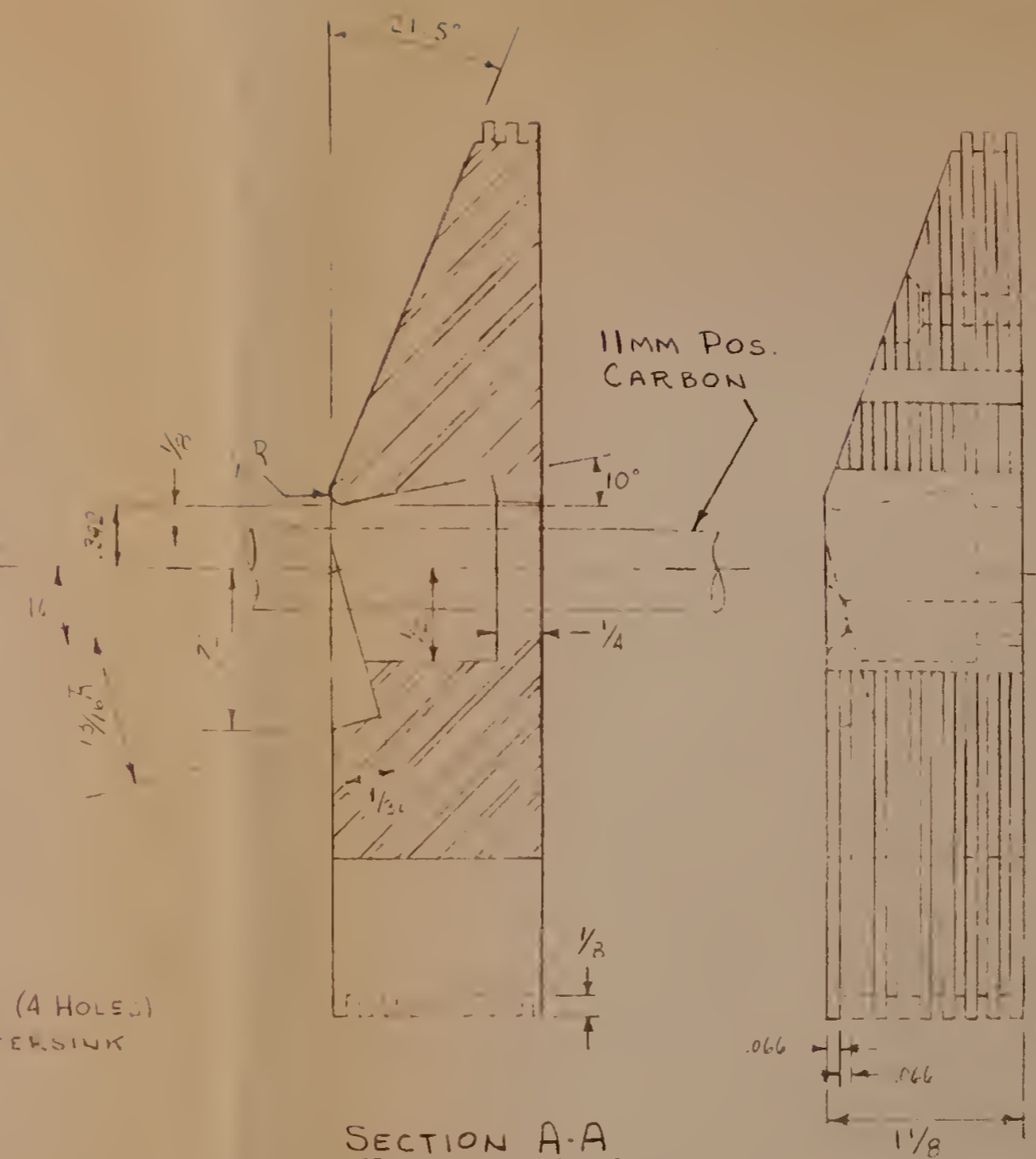
~~SECRET~~
PART #22

ORIGINAL DATE OF DRAWING Feb 2, '54

REVISIONS			
NO.	E. C. N.	CHANGE	DATE
1			
2			
3			
4			



FRONT VIEW



SECTION A-A

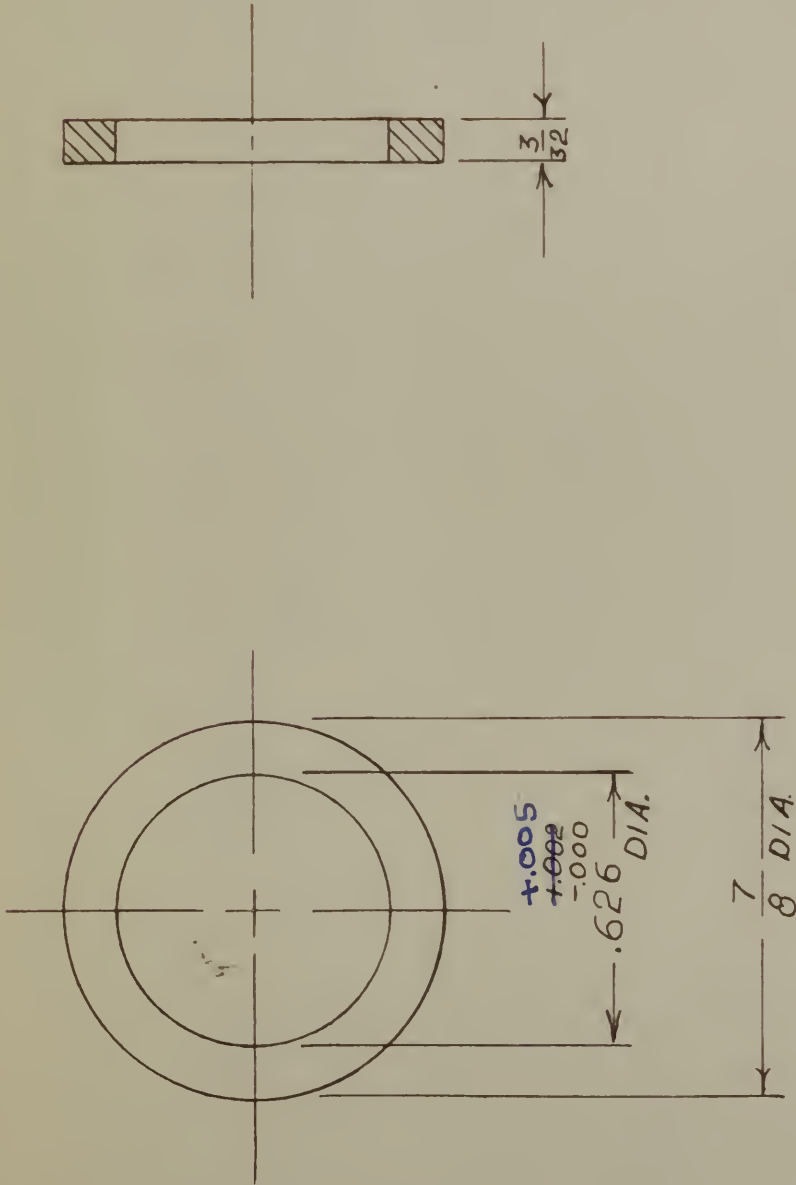
SIDE VIEW

10-32 (4 HOLES)
COUNTERSINK

NBS DWG. No 3156-22
REF: NBS REPORT 1354

PIECE NO.	NOMENCLATURE	NO. REQ'D
NATIONAL BUREAU OF STANDARDS WASHINGTON 25, D. C.		
OBTURATOR - PROBE		
FOR - AVQ-2A SEARCHLIGHT		
MODEL	TYPE	SCALE -1:1
DIMENSIONS IN INCHES <i>(Unless otherwise specified)</i>	DRAFTSMAN J.A.L.	CHECKER
TOLERANCES <i>(Unless otherwise specified)</i>	PROJECT ENGR.	PROJECT ENGR.
DECIMALS = .005	SUBMITTED BY	
FRACTIONS = .015	CHIEF, SEC.	
ANGLES = 1/2°	EXAMINED BY	
DO NOT SCALE THIS PRINT	CHIEF ENGINEER	
DIV. SEC.	THIS PRINT ISSUED	APPROVED BY
2.1		CHIEF, DIV.
PART #22		

**MATERIAL: CAVITY-FREE,
ELECTROLYTIC TOUGH PITCH
(ANALONDA ALLOY #100)
COPPER - THERMAL CON-
DUCTIVITY AT LEAST 3.8 WATT-
CM/CM²/C° (220 BTU-FT/FT²/HR/°F)
AT 68°C**



NBS DWG # 3156-23

AVQ-2A SEARCHLIGHT

NBS MODIFICATION

REF: NBS REPORT 1354

NATIONAL BUREAU OF STANDARDS
WASHINGTON 25, D. C.

DRAFTSMAN
W.F.M.
DIV 2 - 1

DATE
8-4-52

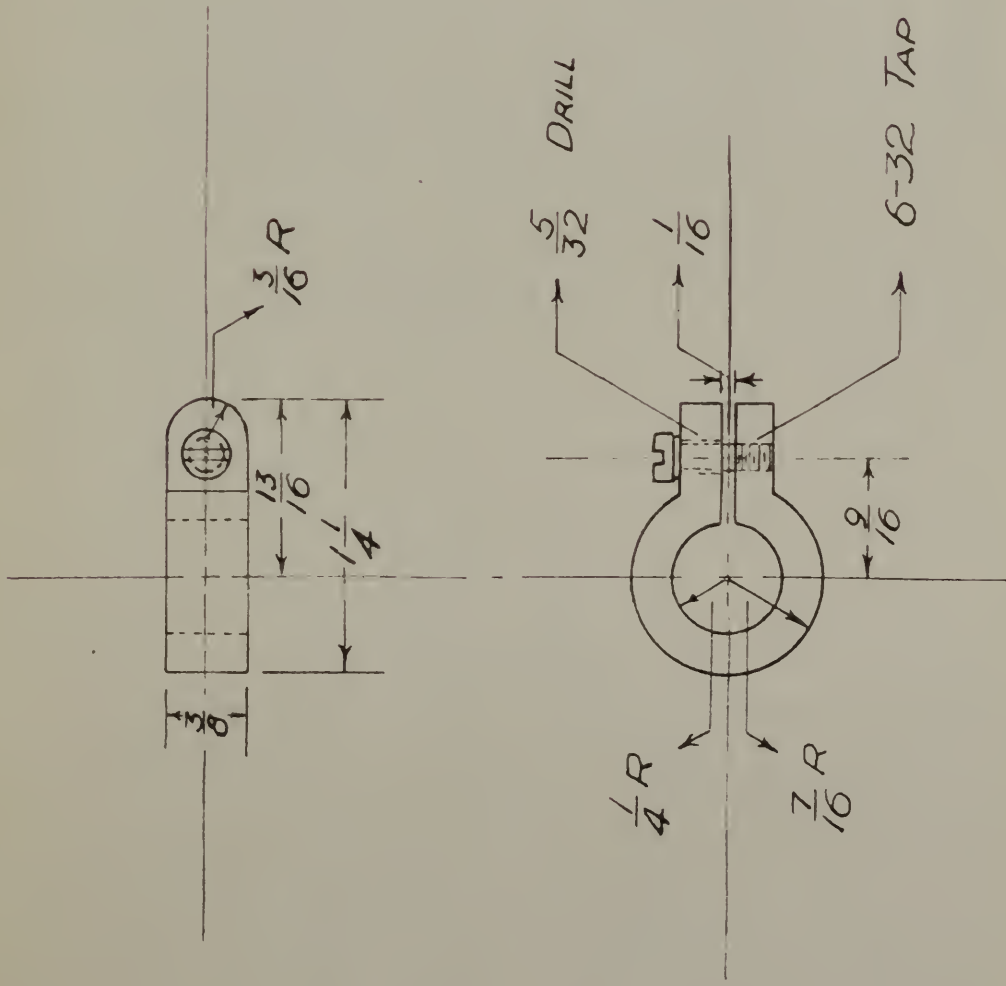
SCALE
 $\frac{2}{1}$

WASHER # 23

LAVA, GRADE "A"

MATERIAL: TRANSLITE

DIMENSIONS IN INCHES
TOLERANCES
(UNLESS OTHERWISE SPECIFIED)
DECIMALS $\pm .005$
FRACTIONS $\pm .015$
ANGLES $\pm 1/2^\circ$



MATERIAL:

STAINLESS STEEL
 AISI TYPE 302
 INCLUDING SCREW & LOCK
 WASHER

NBS DWG. No 3156-24

AVQ-2A SEARCHLIGHT

NBS MODIFICATION

REF: NBS REPORT 1354

NATIONAL BUREAU OF STANDARDS
 WASHINGTON 25, D. C.

DRAFTSMAN
 W.A.N.
 DIV 2
 SEC 1

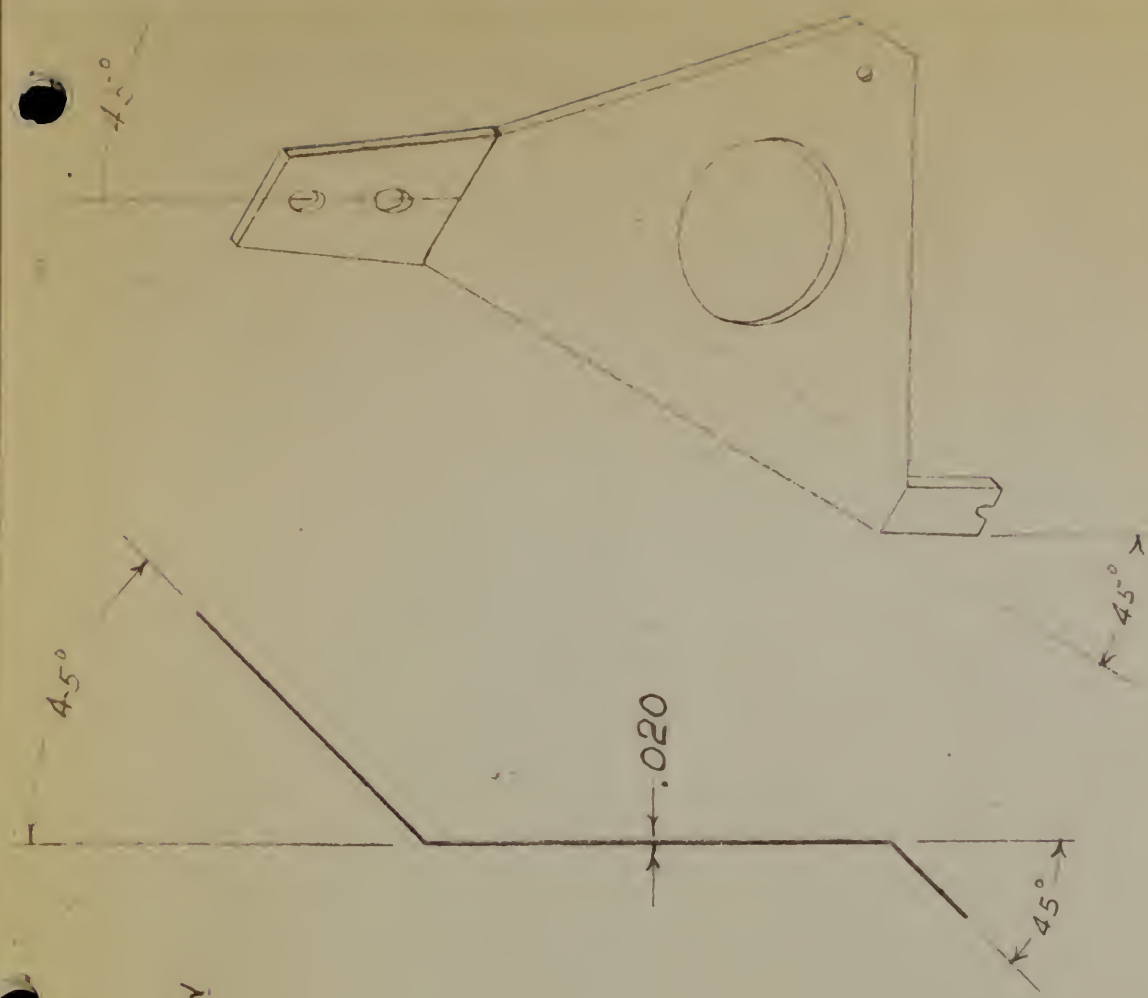
DATE
 10/15/51

SCALE
 1:1

CLAMP - PART 24

~~CLAMP~~

DIMENSIONS IN INCHES
 TOLERANCES
 (unless otherwise specified)
 DECIMALS ±.005
 FRACTIONS ±.015
 ANGLES ± 1/2°



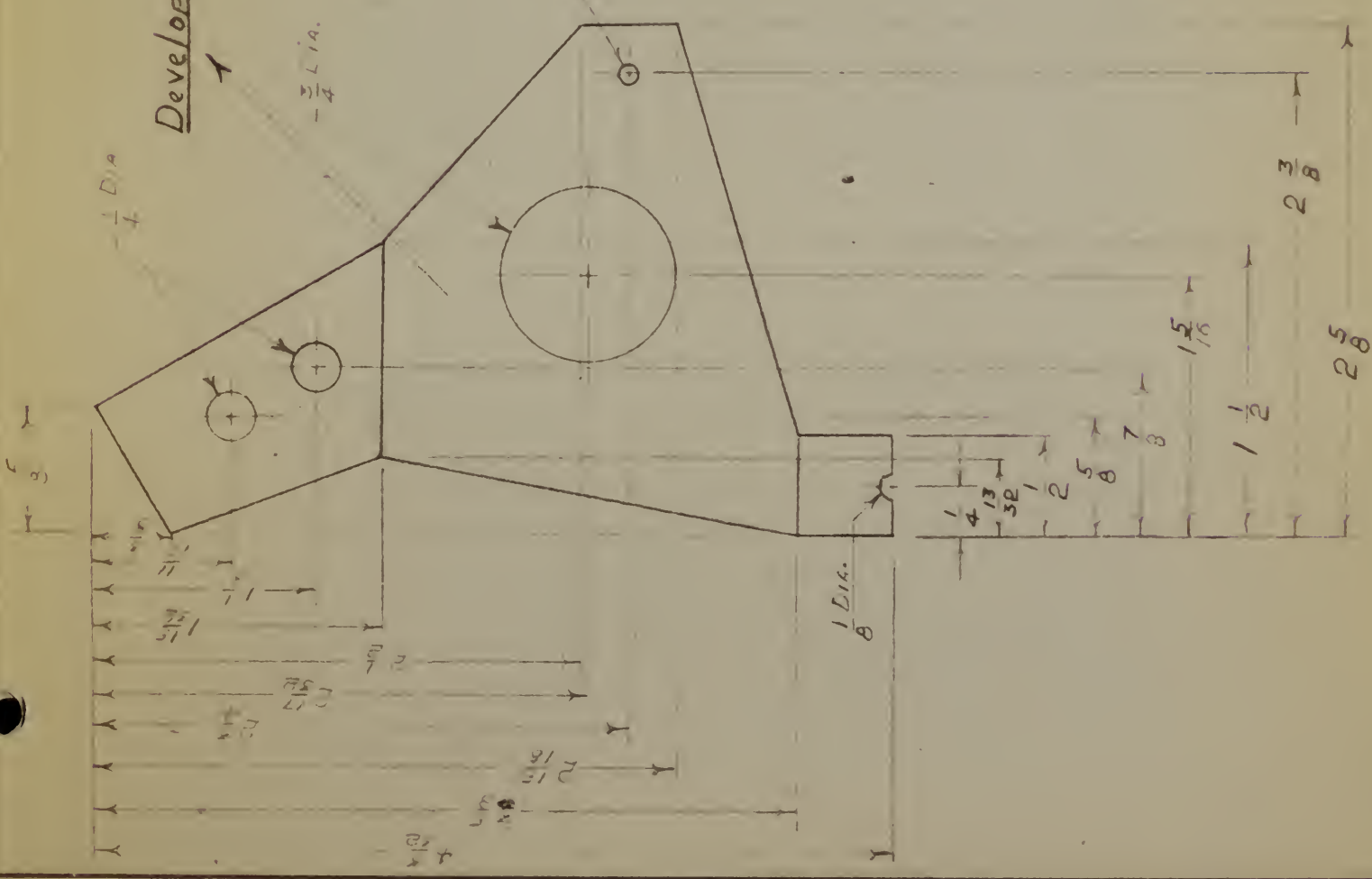
NBS DWG No 3156-28
 AVQ-2A SEARCHLIGHT
 NBS MODIFICATION
 REF: NBS REPORT 1354

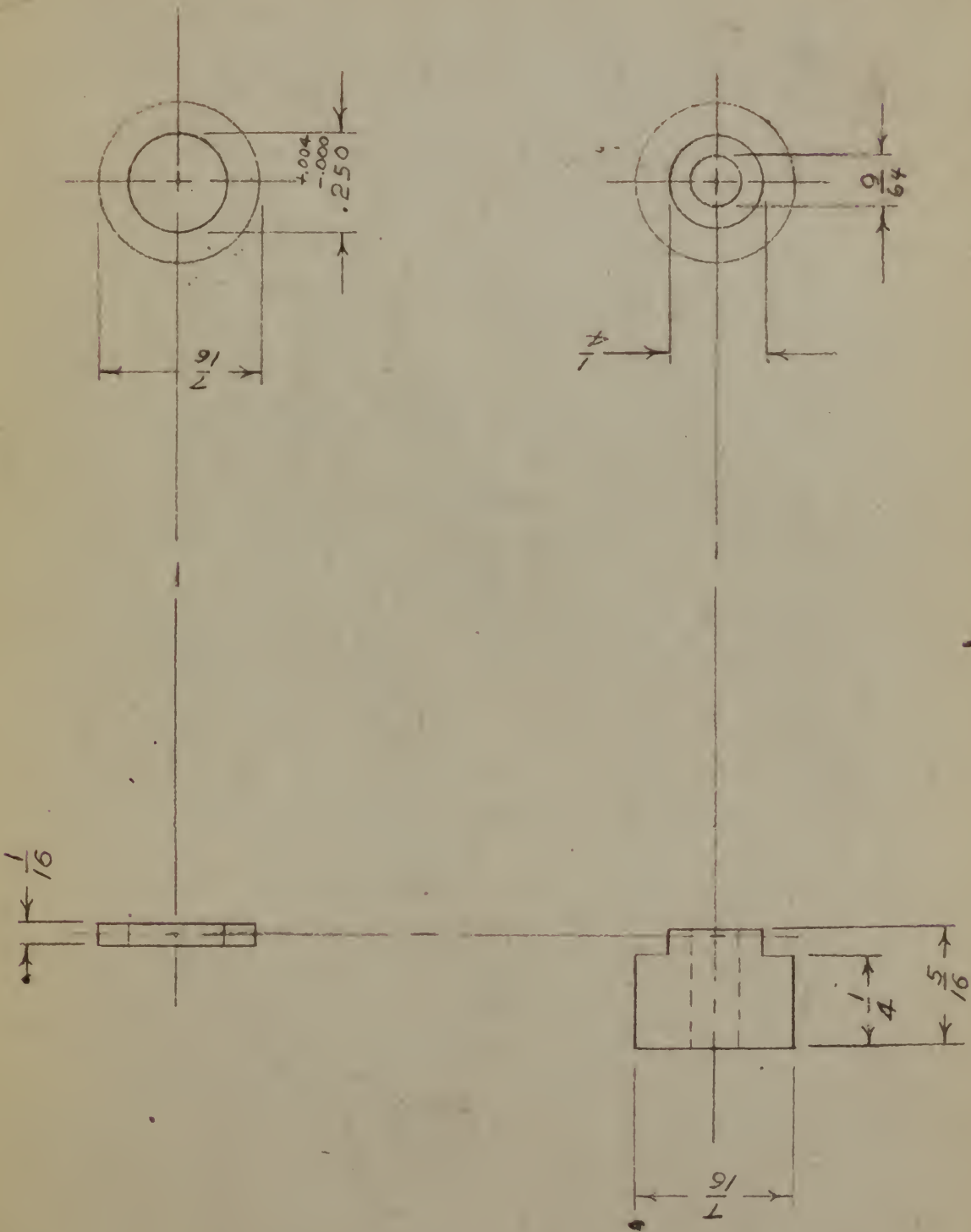
MATERIAL: ANACONDA
 GRADE "A" SPRING
 PHOSPHOR BRONZE

NATIONAL BUREAU OF STANDARDS
 WASHINGTON 25, D. C.

DRAFTSMAN	DATE	SCALE
W.F.M.	9-17-52	APPROX. 1:1
DIV SEC.	FRUSH CONTACT ASSY	
E - 1	#28	
	DATE: 9-17-52	

DIMENSIONS IN INCHES
 TOLERANCES
 (Unless otherwise specified)
 DECIMALS - ±.005
 FRACTIONS - ±.015
 ANGLES - ± 1/8°





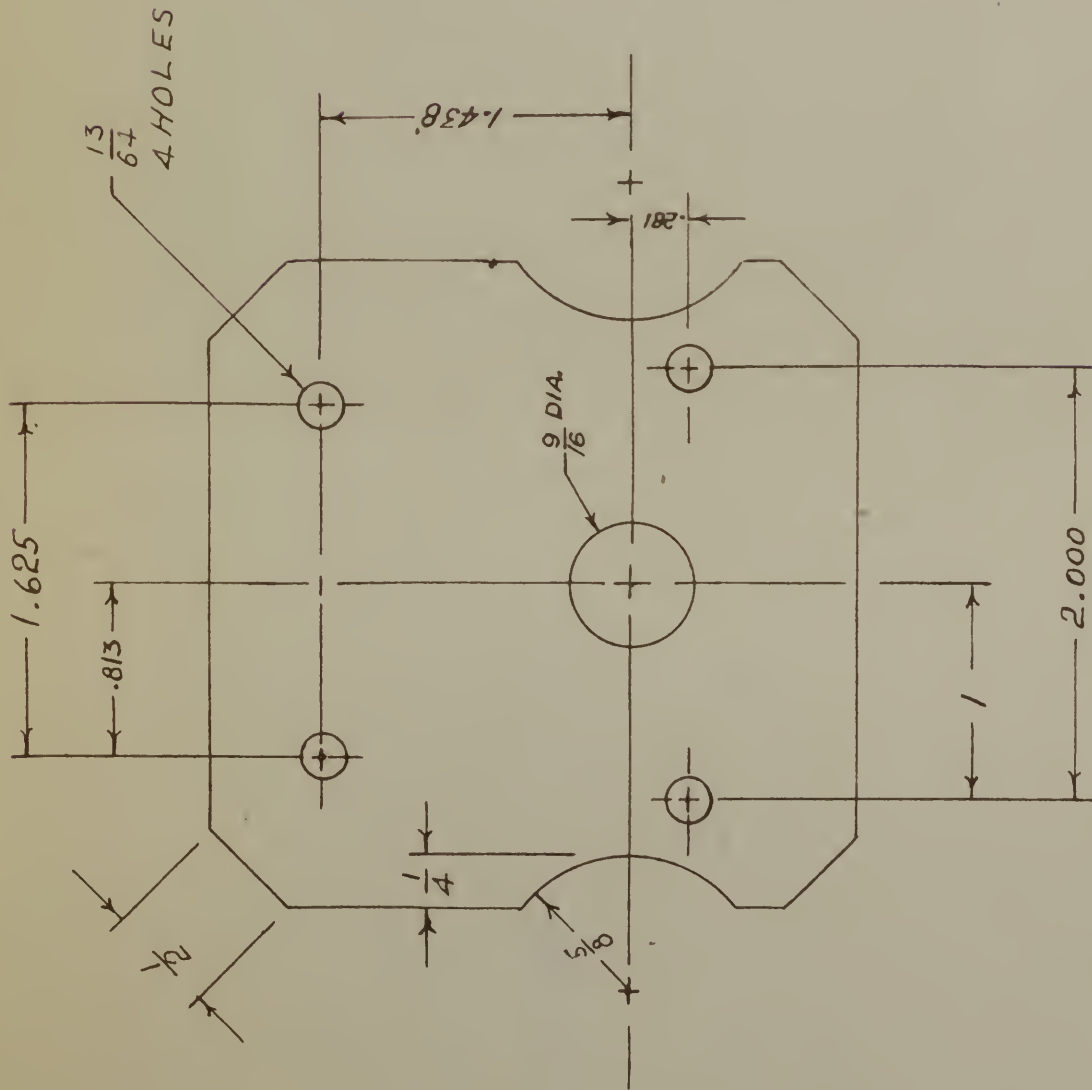
NBS DWG # 3156-30,31
 AVQ-2A SEARCHLIGHT
 NBS MODIFICATION
 Ref: NBS Report 1354

NATIONAL BUREAU OF STANDARDS
 WASHINGTON 25, D. C.

DRAFTSMAN	DATE	SCALE
W.F.M.	9-10-58	$\frac{2}{1}$
DIV	30	
SEC		

MATERIAL: COMPOSITION
 TRADE NAME: TEXTOLITE
 GOVT. SPEC. - N-17D5 TY. FRE

Dimensions in Inches
 Tolerances
 (unless otherwise specified)
 DECIMALS - ± 0.005
 FRACTIONS - ± 0.01



NBS DWG No 3156-32

AVQ-2A SEARCHLIGHT
NBS MODIFICATION
REF: NBS REPORT 1354

NATIONAL BUREAU OF STANDARDS
WASHINGTON 25, D. C.

DRAFTSMAN	DATE	SCALE
W. F. M	8-8-52	$\frac{1}{1}$
DIV	SEC	
2	- 1	

INSULATOR, 32

CLEAR
MATERIAL: PHILOGOPITE MICA

DIMENSIONS IN INCHES
TOLERANCES
unless otherwise specified
DECIMALS $\pm .005$
FRACTIONS $\pm .015$
ANGLES $\pm \frac{1}{2}$



LAVA-GRADE "A"
 MATERIAL: ~~BRASS~~

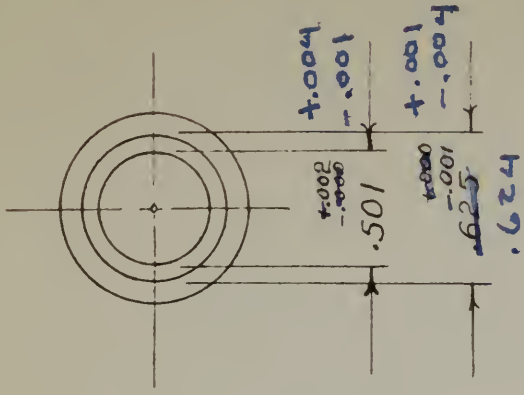
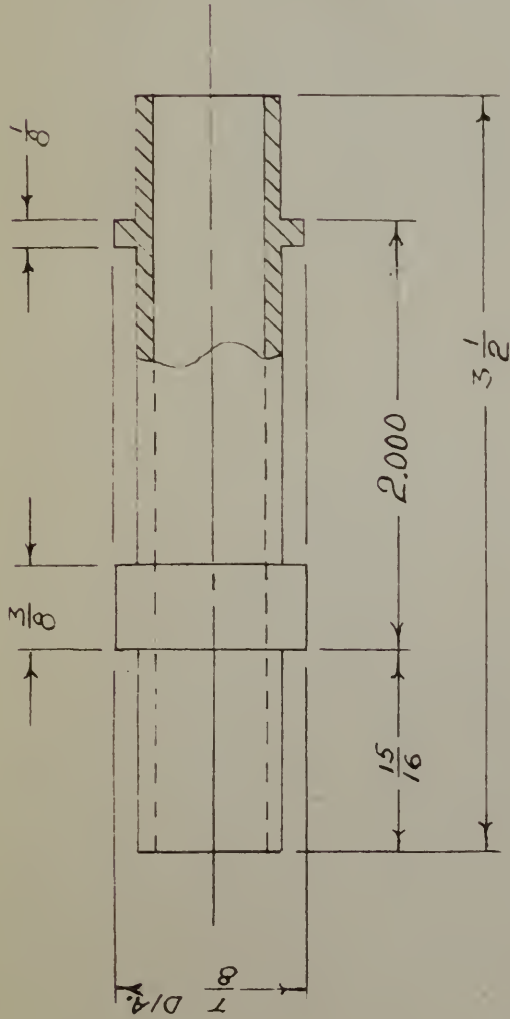
DIMENSIONS IN INCHES
 TOLERANCES
 (unless otherwise specified)
 DECIMALS $\pm .005$
 FRACTIONS $\pm .015$
 ANGLES $\pm 1/2$

NBS DWG. No 3156-44
 AVQ-2A SEARCHLIGHT
 NBS MODIFICATION
 REF: NBS REPORT 1354

NATIONAL BUREAU OF STANDARDS
 WASHINGTON 25, D. C.

DRAFTSMAN	DATE	SCALE
W.F.M	8-5-52	$\frac{2}{1}$
DIV	SEC	
2	1	

BUSHING # 44



DIMENSIONS IN INCHES
 TOLERANCES
 (UNLESS OTHERWISE SPECIFIED)
 DECIMALS ±.005
 FRACTIONS ±.015
 ANGLES ± 1/2°

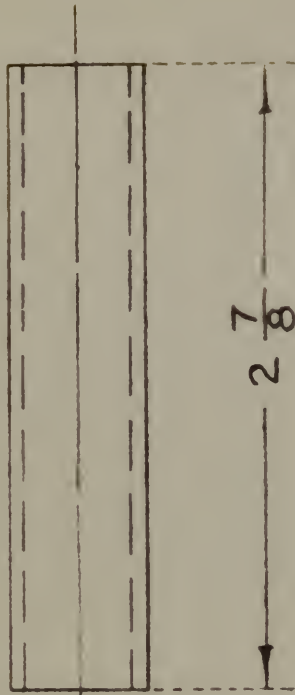
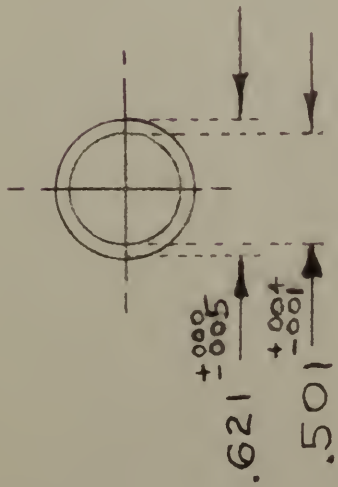
MATERIAL LAVA, GRADE "A"
 COMPOSITION -
 GOVT-SPEC - N-17DS-IX-FBE
 TRADE NAME - TEXTOLITE

NBS DWG No 3156-46A
 AVQ-2A SEARCHLIGHT
 NBS MODIFICATION
 REF: NBS REPORT 1354

NATIONAL BUREAU OF STANDARDS
 WASHINGTON 25 D C.

DRAFTSMAN	DATE	SCALE
W.F.M.	8-28-52	1/1
DIV	SEC	
2-1		

SPACER & INSULATOR
 POSITIVE DRIVE, 46A



DIMENSIONS IN INCHES
 TOLERANCES
 (unless otherwise specified)
 DECIMALS $\pm .005$
 FRACTIONS $\pm .015$
 ANGLES $\pm 1/2$

MATERIAL:
 GRADE "A" LAVA

NBS Dwg No 3156-46B

AVQ-2A SEARCHLIGHT
 NBS MODIFICATION
 REF: NBS REPORT 1354

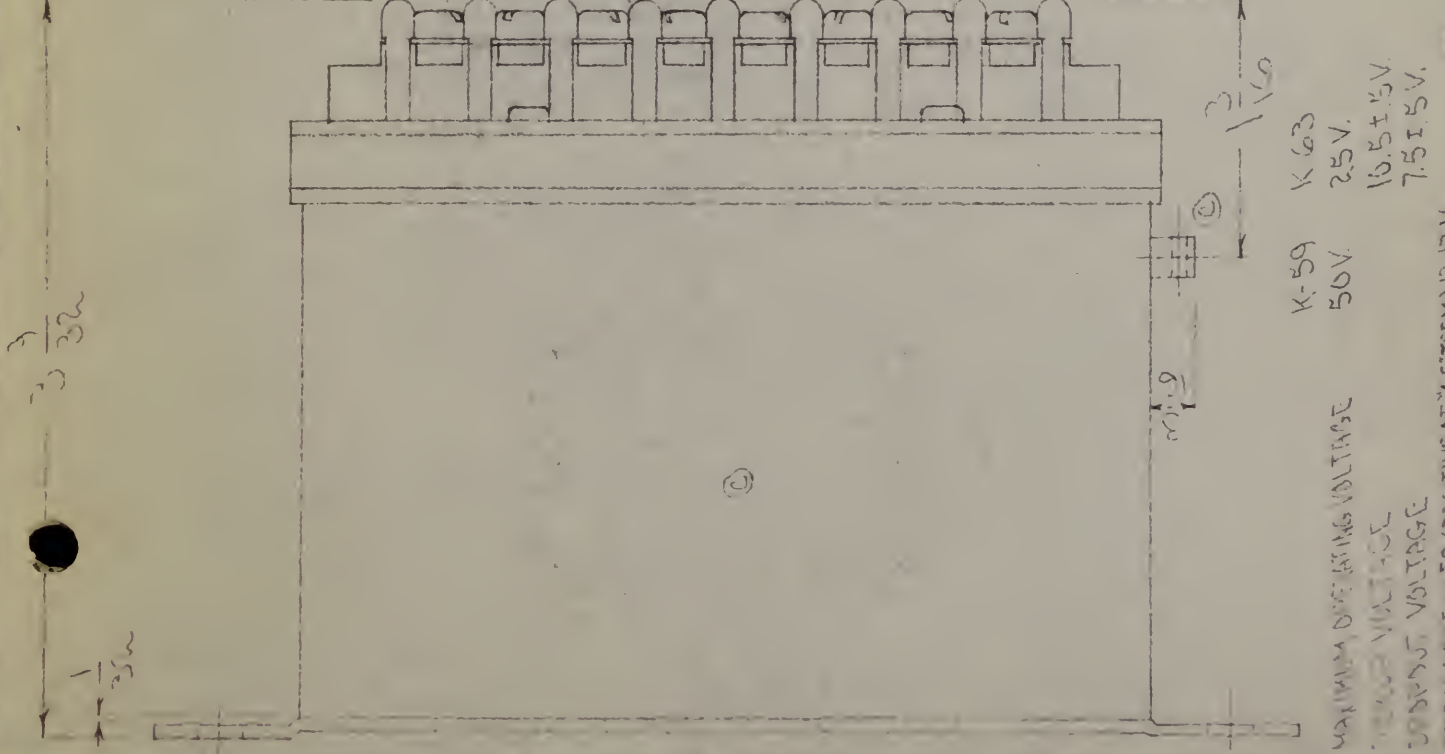
NATIONAL BUREAU OF STANDARDS
 WASHINGTON 25, D. C.

DRAFTSMAN	DATE	SCALE
JWL	2-23-54	1
DIV	SEC	
2	1	
INSULATOR, NEG. ASSEMBLY # 46B		

C

A-832

LET.	REVISION	Date	Checker
B	WEORRN IN TERM. PLATE CHANGED	12/64	WJ
C	STAMPING & CONT. HOLES N.B.M.C.	3/64	WJ
	PLAT. - 8 HOLES - 1/16" DIA.		



- K-59 50V
 - K-63 25V, 16.5±.5V, 7.5±.5V
- MAXIMUM OPENING VOLTAGE
 MINIMUM VOLTAGE
 CONTACT VOLTAGE
 OPEN CONTACT POSITIVE AT A-F TERMINAL 12-13V.
 CLOSED CONTACT POSITIVE AT A-F TERMINAL 6-7V.
 MAXIMUM SPEAKING PERIOD 50V-140V. ON 5 MIN. CONT.
 25V-CONT.
 MAXIMUM ON VOLTAGE 28V. 15V.

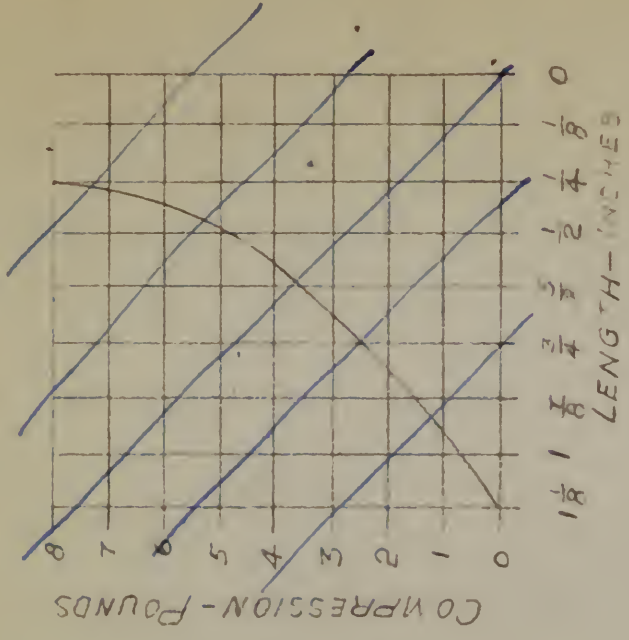
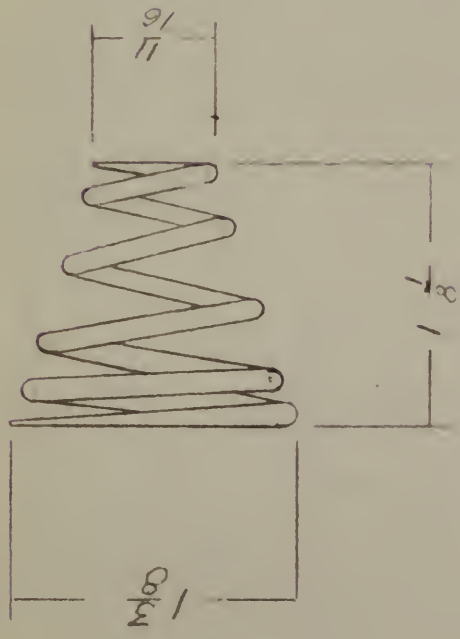
NBS DWG No 3156-47

THE HARTMAN ELECTRICAL MANUFACTURING COMPANY

MANSFIELD, OHIO

SPECIAL TREATMENT	SCALE	TOLERANCES	DRAWN BY	DATE	CHECKER	NO REQ'D	USED ON	NEXT ASSEM.
	1"=1"	Unless otherwise specified: Fractions .010 Decimals .003	B.S.	3-8-54	WJ			

NAME
 DRAWN BY
 DATE
 CHECKER
 NO REQ'D
 USED ON
 NEXT ASSEM.
 DWG. NO.



NBS Drawg No 3156-56

AVQ-2A SEARCHLIGHT
NBS MODIFICATION
REF: NBS REPORT 1354

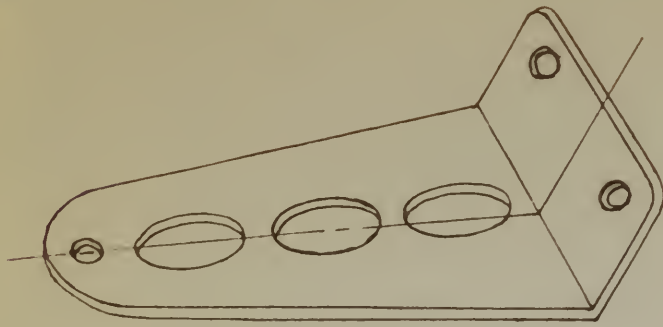
NATIONAL BUREAU OF STANDARDS
WASHINGTON 25, D. C.

DRAFTSMAN	DATE	SCALE
W F M	8-23-52	APPROX. 1
DIV	SEC	PART
2 - 1		DOULER SPRINGS #56

.059 CADMIUM
PLATED STEEL

MATERIAL: MUSIC WIRE

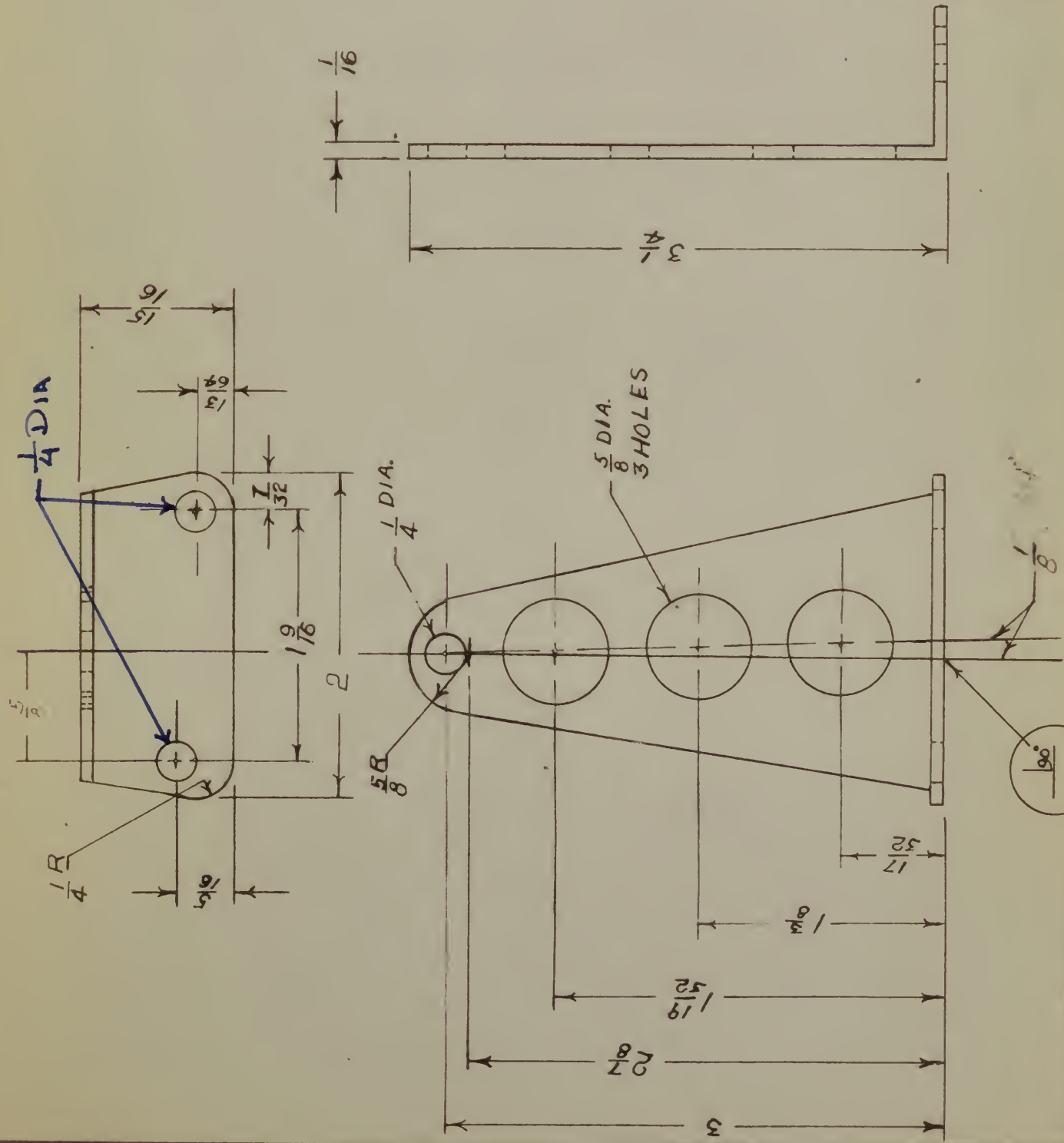
DIMENSIONS IN INCHES
TOLERANCES
(unless otherwise specified)
DECIMALS ±.005
FRACTIONS ±.015
ANGLES ± 1/2°



NBS Desg. # 3156-65
 AVQ-2A SEARCHLIGHT
 NBS MODIFICATION
 REF: NBS REPORT 1354

NATIONAL BUREAU OF STANDARDS
 WASHINGTON 25, D. C.

DRAFTSMAN	DATE	SCALE	PART N°
W.F.M	8-7-52	1/1	
DIV	SEC		
2	1		BRACE 65



DIMENSIONS IN INCHES
 TOLERANCES
 (UNLESS OTHERWISE SPECIFIED)
 DECIMALS ±.005
 FRACTIONS ±.015
 ANGLES ±.1°

MATERIAL: BRASS, HALF HARD

A-754B

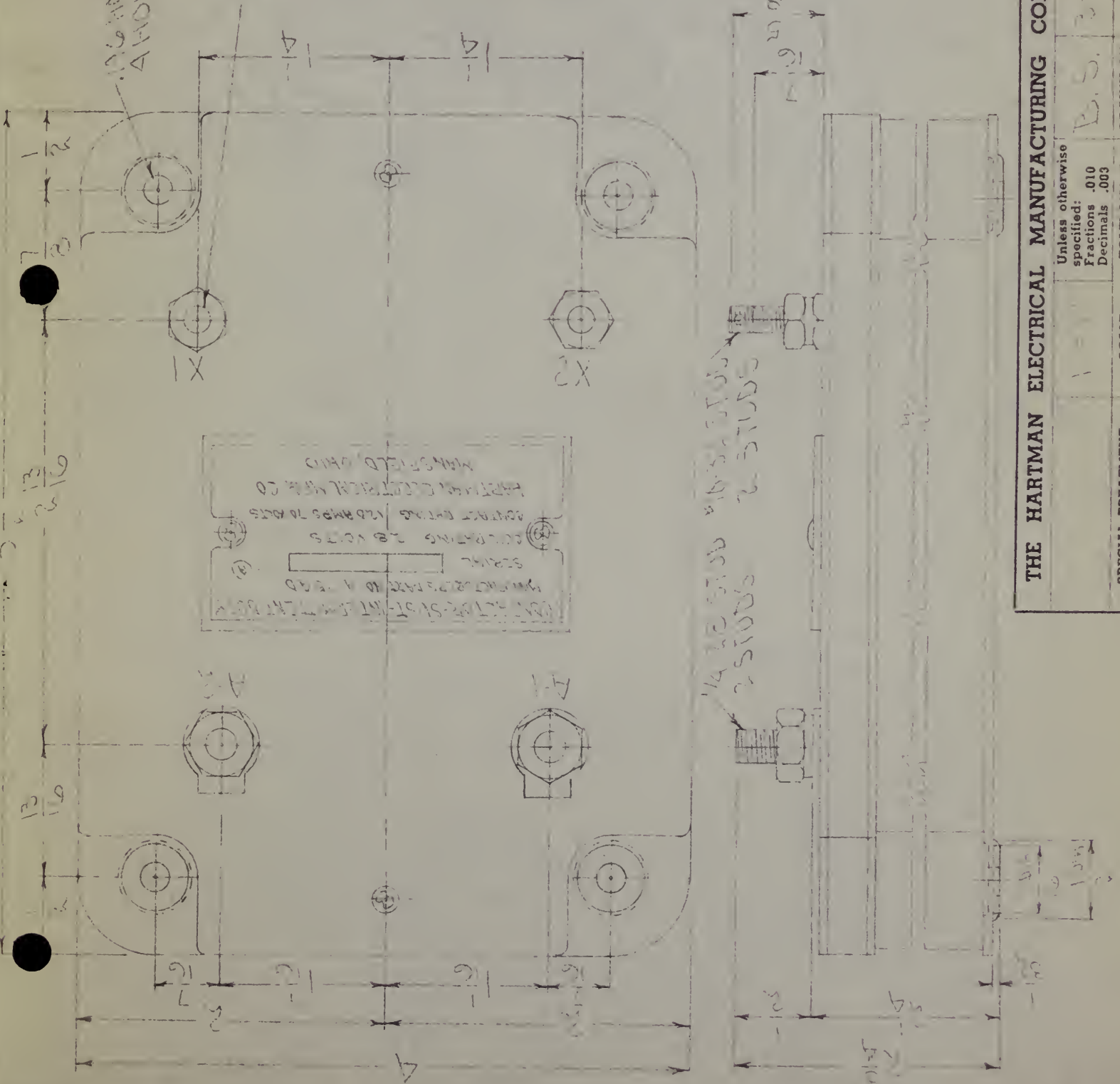
LET.	REVISION	Date	Checked
A	REVISIONS STAMPED STAMPING SHOULD BE MADE DATE		

12.6 MOLE
Δ MOLES

VENTED
TERMINAL

CONTACT RATING
INTERMITTENT DUTY 1 P.M.A. DUTY
OF 5 MIN. 12.5 AMP 70 VOLTS
RELAY COIL TO BE OPERATED FROM 25V D.C.
12.5 AMP
COIL CURRENT
MAX. AT 25V D.C. AT 77°F
RELAY TO CONFORM TO SPEC.
MIL-R-6742

WEIGHT 2 LBS. 16 OZ. MAX.



CONTACT RATING 12.5 AMP 70 VOLTS
INTERMITTENT DUTY 1 P.M.A. DUTY
OF 5 MIN. 12.5 AMP 70 VOLTS
RELAY COIL TO BE OPERATED FROM 25V D.C.
12.5 AMP
COIL CURRENT
MAX. AT 25V D.C. AT 77°F
RELAY TO CONFORM TO SPEC.
MIL-R-6742

NBS Dwg No 3156-K64

THE HARTMAN ELECTRICAL MANUFACTURING COMPANY		MANSFIELD, OHIO	
1	3-9-54	UK	
DATE	DRAWN BY	CHECKER	NO REQ'D
3-9-54			USED ON
TOLERANCES	NAME		NEXT ASSEM.
Unless otherwise specified: Fractions .010 Decimals .003	CONTACT STOP INTERMITTENT DUTY		DWG. NO.

