



A11106 690489

REFERENCE

**NBSIR 75-701**

# **Evaluation of Smokeproof Stair Towers and Smoke Detector Performance**

---

Francis C. W. Fung and Richard H. Zile

Center for Fire Research  
Institute for Applied Technology  
National Bureau of Standards  
Washington, D.C. 20234

September 1975

Final

Prepared for  
**Office of Policy Development and Research**  
**Department of Housing and Urban Development**  
Washington, D.C. 20410

**QC  
100  
.U56  
75-701  
1975**



NBSIR 75-701

# EVALUATION OF SMOKEPROOF STAIR TOWERS AND SMOKE DETECTOR PERFORMANCE

---

Francis C. W. Fung and Richard H. Zile

Center for Fire Research  
Institute for Applied Technology  
National Bureau of Standards  
Washington, D.C. 20234

September 1975

Final

Prepared for  
Office of Policy Development and Research  
Department of Housing and Urban Development  
Washington, D.C. 20410



---

**U.S. DEPARTMENT OF COMMERCE, Rogers C.B. Morton, Secretary**  
**James A. Baker, III, Under Secretary**  
**Dr. Betsy Ancker-Johnson, Assistant Secretary for Science and Technology**  
**NATIONAL BUREAU OF STANDARDS, Ernest Ambler, Acting Director**



## FOREWORD

Smoke as a critical factor in the safety of persons in a fire situation in a high-rise building has received considerable attention in recent years [1,2]<sup>1</sup>. In case of fire in such a structure, the initial buoyancy forces due to heat may be augmented by a stack effect resulting from weather conditions to cause air and smoke to travel more rapidly upwards in stairways and elevator and utility shafts. This vertical movement of smoke not only speeds smoke infiltration into the upper levels of a building, but can also leave travel paths clogged with smoke, thus hindering or preventing evacuation and obstructing the efforts of firefighters.

Recent research abroad and in the United States has indicated the feasibility of smoke control by means of ventilation make-up, air input, and pressurization or venting of the stairwells. From a brief survey of the current status of smoke control in high-rise buildings it appears that the basic principles and guidelines for these techniques are being studied widely [3-12]. For a more detailed literature discussion, refer to Hobson and Stewart's article [13]; and for general guidelines on high-rise smoke control, see the work by Galbreath, McGuire and Tamura [14].

Current smoke control activities at the National Bureau of Standards (NBS) are aimed at evaluating the techniques quantitatively. With this in mind two approaches have been taken: first, to conduct high-rise smoke simulation experiments that can quantitatively measure the smoke movement under controlled and uncontrolled conditions; and second, to model the smoke simulation experiments analytically: to establish a smoke movement prediction program which will form the basis for optimizing smoke control design standards.

---

<sup>1</sup>Numbers in brackets refer to the literature references listed in section 8.

## SI Conversion Units

In view of the present accepted practice in this country for building technology, common U. S. units of measurement have been used throughout this paper. In recognition of the position of the United States as a signatory to the General Conference on Weights and Measures, which gave official status to the metric SI system of units in 1960, assistance is given to the reader interested in making use of the coherent system of SI units by giving conversion factors applicable to U. S. units used in this paper.

$$1 \text{ in} = 0.0254 \text{ m (exactly)}$$

$$1 \text{ ft} = 0.3048 \text{ m (exactly)}$$

$$1 \text{ ft/min (fpm)} = 5.08 \times 10^{-3} \text{ m/s}$$

$$1 \text{ ft}^3/\text{min (cfm)} = 4.719 \times 10^{-4} \text{ m}^3/\text{s}$$

$$1 \text{ in H}_2\text{O} = 248.84 \text{ pascal (pa)}$$

# CONTENTS

	Page
FOREWORD . . . . .	iii
SI CONVERSION UNITS . . . . .	iv
LIST OF TABLES . . . . .	vi
1. INTRODUCTION . . . . .	1
2. TEST BUILDING . . . . .	2
3. TEST METHOD AND INSTRUMENTATION - SMOKEPROOF STAIR TOWERS . . . . .	4
4. TEST METHOD AND INSTRUMENTATION - SMOKE DETECTORS . . . . .	5
5. RESULTS . . . . .	6
5.1. Tests of Smokeproof Stair Towers . . . . .	6
5.2. Laboratory Test of Smoke Detectors . . . . .	7
5.3. Field Tests of Smoke Detectors . . . . .	7
6. DISCUSSION OF RESULTS . . . . .	7
7. CONCLUSIONS & RECOMMENDATIONS . . . . .	9
8. REFERENCES . . . . .	10
APPENDIX A . . . . .	17
APPENDIX B . . . . .	17

LIST OF TABLES

	Page
Table 1. Smoke Movement Test 1 . . . . .	12
Table 2. Smoke Movement Test 2 (Study of Door Openings) . . . . .	13
Table 3. Smoke Detector Laboratory Tests . . . . .	14
Table 4. Smoke Detector Field Tests . . . . .	15
Table 5. Visual Observations of Smoke Detector Field Tests . . . . .	16



# EVALUATION OF SMOKEPROOF STAIR TOWERS AND SMOKE DETECTOR PERFORMANCE

Francis C. W. Fung and Richard H. Zile

A study was made by the National Bureau of Standards to evaluate the effectiveness of a smokeproof stairwell tower installed in a high-rise apartment building. Tests were also made of photoelectric-type corridor smoke detectors. A quantitative experimental technique of smoke simulation and smoke movement measurement was used. Factors diminishing the effectiveness of the stair towers, preventing smoke infiltration and limiting the response of the detectors, are noted.

Key words: High-rise buildings; photoelectric smoke detector; smoke control; smoke movement simulation; smokeproof tower.

## 1. INTRODUCTION

Smokeproof towers and an accessory corridor smoke detection system provided in a high-rise apartment building were the subjects of study by the National Bureau of Standards (NBS).

The building had been constructed under the Operation BREAKTHROUGH program of the Department of Housing and Urban Development (HUD). The "Guide Criteria for the Evolution of Operation BREAKTHROUGH Housing Systems" [15], prepared by the National Bureau of Standards, contains the recommendation that in apartment buildings over six stories in height, one exit stairway should be in a smoke-proof enclosure (definition in appendix A).

The housing system producer (HSP) had the option of using any suitable design method to satisfy the recommended requirement. Three satisfactory methods are described in the previously cited publication of the National Research Council of Canada, "Exploratory Paper on Control of Smoke Movement in High Buildings" [14].

Early in the BREAKTHROUGH program, the HSP requested a waiver of the Volume I MFHR (Multi-Family High Rise) Guide Criteria Sections L.4.2.1 and L.4.2.2 for one of the buildings at the Jersey City Operation BREAKTHROUGH Prototype Site.

These criteria recommend that corridor length dead ends not exceed 20 feet (40 feet with automatic smoke detection in corridors) and that a minimum of two exits be provided spaced at least one-half corridor length apart. The HSP, in order to meet certain constraints of this particular industrialized system, requested permission to place the required remotely-located stairways in the center core of the building. HUD granted these waivers on the basis that the NBS recommendations for certain compensating fire-safety provisions be incorporated into the design over and above the related recommendations in the Guide Criteria. The purpose of this field investigation was to evaluate elements of the alternate design to insure their life safety adequacy:

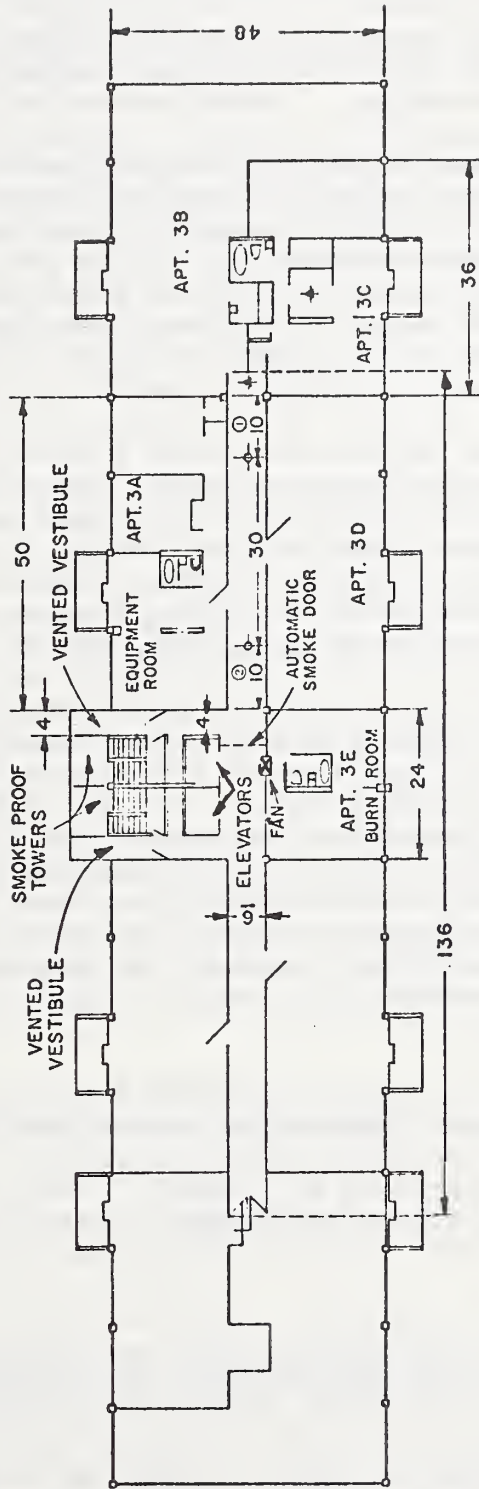
1. Smoke detectors provided in the corridors, spaced approximately 30 feet on center. These smoke detectors were to be connected to the building fire alarm system according to the recommendations of the Guide Criteria.
2. Both stairwells to be made smokeproof instead of one as called for in the Guide Criteria (Volume I, L.4.2.9).
3. A Class B, one-hour smoke barrier door to be installed to divide each floor corridor into two smokeproof areas. For structural reasons, the barrier was placed to one side of the center of the corridor length, as seen in figure 1. The door was to be self-closing and held open with an electro-magnetic device, which released upon actuation of the building fire alarm system.

The other recommended safety provisions applicable to the building are listed in appendix B.

## 2. TEST BUILDING

The tests were conducted in an 18-story precast concrete apartment building; a typical floor plan is shown in figure 1. As already stated, and seen on the floor plan, the two required exit stairways were placed together in the center core of the building.

The design used by the HSP to render the stairways smokeproof was by provision of vestibules between the corridors and stairways. For smoke relief, the vestibules were vented to an adjoining shaft that ran the full height of the building and was open to the outside on alternate floors. The required smoke detectors were of the photoelectric type.



- ▲ SMOKE CANDLES
  - SMOKE DETECTORS
  - PHOTOMETERS
- (PHOTOMETER 3, UNDER  
DETECTOR 2 AT 3FT. HEIGHT)

NOTE: ALL DIM. IN FEET

FIGURE 1 TYPICAL FLOOR PLAN

### 3. TEST METHOD AND INSTRUMENTATION-SMOKEPROOF STAIR TOWERS

The experimental program to study the effectiveness of the smokeproof towers in the building was conducted in comparatively mild winter weather. Smoke was simulated by a net airflow out of a designated "burn-room" (third floor apartment 3E, fig. 1). The air was mixed with a predetermined percentage of sulfur hexafluoride ( $\text{SF}_6$ ) tracer gas<sup>2</sup> and heated to a temperature approximately 10 °F above the corridor temperature. The range of reference concentrations of the  $\text{SF}_6$  tracer gas<sup>3</sup> in the air from the burn-room was of the order of 200 parts per billion (ppb), which was the maximum reference concentration for each experiment. Two smoke movement simulations were tested, as presented in tables 1 and 2.

The test procedures in the two trials were similar. However, as there was some indication in the first test that the effectiveness of the smokeproof towers could be defeated by the passage of persons through the isolating vestibules, the second test was conducted with people instructed to deliberately pass from the 16th and 17th floors into the stairwells during the period of simulated smoke release.

Prior to the beginning of each experiment the burn-room air was preheated to a temperature of approximately 80 °F by setting the thermostat of the forced air heating furnace in that apartment. A window box-type fan as shown in figure 1 was used to draw the preheated air from the burn-room and blow it into the corridor. A cardboard mask was installed in the hall doorway, in the same vertical plane as the fan, to allow air from the burn-room only to be channeled through the fan. The measured airflow through the fan was approximately 900 cfm with an average pressure of approximately 0.04 inch  $\text{H}_2\text{O}$  across the fan.

At the beginning of a test a standard lecture-size bottle of  $\text{SF}_6$  gas, located inside the burn-room in front of the fan, was turned on to continuously deliver a predetermined amount of  $\text{SF}_6$  to the burn-room air supply. The infiltration was then traced by sampling at different locations as tabulated in tables 1 and 2.

---

<sup>2</sup> $\text{SF}_6$  was chosen as a tracer gas because of its electron capture property for detection, as well as being odorless, colorless, harmless and stable.

<sup>3</sup>OSHA concentration limits of  $\text{SF}_6$  is 1000 ppm as set forth in the Federal Register, Volume 36, No. 157, August 13, 1971.

Flow rates of the simulated smoke were determined from velocity measurements made with a thermo-anemometer having a low range of 100-500 feet per minute (fpm), and a high range from 500 to 1,200 fpm. Average velocities were obtained by making a traverse of nine points as for square or rectangular ducts.

The continuous release of SF<sub>6</sub> gas into the burn-room was metered by a ball-type flow meter with a range of 0.05 to 0.5 ft<sup>3</sup>/hr. In each test a slight turn of the needle valve unseated the ball to a position registering approximately 0.01 ft<sup>3</sup>/hr. This range of metering of SF<sub>6</sub> diluted with the approximately 900 cfm airflow from the burn-room usually leads to a burn-room SF<sub>6</sub> concentration of the order of 185 ppb. This concentration of SF<sub>6</sub> was found to be acceptable for experimental purposes since the gas analyzer sensitivity is readable at 1 ppb. This means that the relative concentration in relation to the burn-room can be measured to one part in one hundred. Additional accuracy of the normalized measurements could be obtained by raising the burn-room SF<sub>6</sub> concentration. However, an increase by an order of magnitude of burn-room SF<sub>6</sub> concentration would lead to a doubling of the purge time between experiments, since the disappearance of the released SF<sub>6</sub> in the building is exponential. In the present series of experiments a purge time of 3 hours was required between experiments to clear the building of residual SF<sub>6</sub>.

The air and SF<sub>6</sub> specimens taken at the several sampling locations were analyzed by a portable gas chromatograph having an electron capture cell fitted with a 300 mc radiation source. The response of the instrument to SF<sub>6</sub> is exponential and the usable range is between 1 and 1,000 ppb. If dilution of samples is necessary, the usual syringe technique can be used.

Static pressures were measured by a Magnehelic pressure gauge of 0.01 to 0.5 inch H<sub>2</sub>O range.

#### 4. TEST METHOD AND INSTRUMENTATION-SMOKE DETECTORS

Prior to field testing, the smoke detectors provided in the building corridors were laboratory evaluated for sensitivity at different airflow velocities to provide data for correlating the field performance with laboratory sensitivity values. The tests were run at 15, 50 and 150 fpm airflow.

Five detectors taken from the third floor corridor were tested in the NBS smoke test chamber, using pieces of punk as the smoke source. A description of the test procedure is included in a paper by Bukowski and Bright [16].

Two field tests of smoke detectors were conducted in the third floor corridor. As shown in figure 1, optical photometers Nos. 1 and 2, were installed at ceiling level near detectors 1 and 2, respectively. A third photometer was located in the corridor at a 3-ft height under detector No. 2, and near the exit to the stairwell.

The tests were run with 3-minute smoke candles as smoke sources. In the first test, the candle was placed on the corridor floor in front of apartments 3B and 3C, at a point approximately 10 ft horizontally from detector No. 1. For the second test, the candle was located in the kitchen of apartment 3C. Due to the inclusion of self-closing apartment doors, as required by the Guide Criteria, the corridor door of the apartment was forcibly held open.

Light attenuation at the photometers was indicated on continuous strip-chart recorders that were actuated at the moment of initiation of smoke from lighting a candle. The photometers had a 1-1/2-ft light path. Attenuation of light due to smoke was translated to voltage attenuation through a photocell and amplifier. Voltage readings were converted to optical densities.

## 5. RESULTS

### 5.1. Tests of Smokeproof Stair Towers

The results of the two smoke movement tests are presented in tables 1 and 2. The measured SF<sub>6</sub> concentrations in terms of ppb and percent of burn-room concentration are tabulated for given times and locations. Other test variables and temperature variations are listed in the tables.

A comparison of the corridor and stairwell SF<sub>6</sub> concentrations for corresponding times in test 1 indicates that the stairwell functioned well as a smokeproof stair tower except for a high level concentration of tracer gas at the 18th floor. In the second test, where doors on 16th and 17th floors were opened for exiting to the stairwell during the test, the accumulation of SF<sub>6</sub> in the exitway became progressively worse to the point that the upper half of the stairwell was heavily contaminated.

## 5.2. Laboratory Tests of Smoke Detectors

Results of the tests of smoke detectors made in the NBS laboratory are summarized in table 3. For each detector the smoke level at which it alarmed is tabulated for the three tested airflow velocities.

When tested at an airflow of 150 fpm, each of the five detectors met the recommendation for Operation BREAKTHROUGH acceptability that activation occur at a smoke concentration not greater than 0.01 optical density per foot. However, at 15 fpm airflow, none of the detectors met the recommendation and three of the five failed to respond at 50 fpm.

## 5.3. Field Tests of Smoke Detectors

Results of the tests of the installed smoke detectors made in the third floor corridor of the building are presented in table 4. The smoke concentration at different times for each test is tabulated in terms of percent obscuration per foot (ob/ft) and optical density per foot (od/ft). In both tests, the smoke barrier doors were released upon actuation of the alarm by a detector.

Table 5 lists the visual observations for the two smoke detector tests. From these observations and the data in table 4, the apparent sensitivity of the detector was 0.87 od/ft (86.4% ob/ft) for detector field test 1, and 0.15 od/ft (28.9% ob/ft) for detector field test 2. With the airflow velocity in both tests less than 10 fpm, none of the detectors was capable of meeting the sensitivity recommendations for Operation BREAKTHROUGH.

## 6. DISCUSSION OF RESULTS

The results of the tests with smokeproof stair towers indicated that the smoke moved generally upward, principally through the elevator shafts. For the inside to outside temperature difference of 26 °F, the upward movement appeared to be rather fast as indicated by the 16th floor corridor SF<sub>6</sub> concentration of 27.5% at 5 minutes and 68.1 percent at 15 minutes.

The high level of SF<sub>6</sub> found in the 18th floor stairwell was a cause of concern, as the smokeproof stairwell is not connected to the corridor by design. One explanation was that due to the proximity of the corridor vestibule door and the stairwell door (see fig. 1) it was possible to defeat

the exterior venting feature if both doors were open simultaneously. It was noted that when a person exits from the corridor to the stairwell, the self-closing mechanism of both doors delays the closing, and allows both door openings to coincide for a period of time.

To check the possible effect of door opening overlap was the reason for the second smokeproof stair tower test. As noted in the results, there was a large concentration of SF<sub>6</sub> in the stairwell, probably aggravated by the lack of a means of venting at the top of the stair shaft.

The poor sensitivity at low air velocities of the photoelectric type detectors installed in the building can be attributed to a smoke entry problem. Thus, with these devices the efficiency of smoke detection in the corridors of the building will be largely a function of the velocity of the smoke-laden air.

In the two field tests of smoke detectors, where air velocities were less than 10 fpm, actuation of the alarm by a detector occurred in approximately the same time. As the smoke concentration in the corridor in the first test developed much more rapidly than in the second, the detector sensitivity in the first test was much lower than in the second. This difference in sensitivity is believed to be due to the transient delay of smoke particles in entering the detector sensor chamber as smoke concentration continues to grow outside the smoke detector. In this way an apparent lower sensitivity value for the case of sudden heavy smoke evolution as compared to the case of more gradual smoke evolution could be expected.

In both field tests of smoke detectors, the alarm was actuated by the response of the first detector, which was the nearest to the smoke source. In the first test, photometer 3, farthest from the smoke source registered 0.15 od/ft one minute after alarm, and reached a maximum of 0.23 od/ft at 10 minutes. The same photometer, in the second test showed a maximum of 0.1 od/ft after alarm for the duration of the test; photometer 2 did not register greater than 0.1 od/ft at one minute after alarm. The od/ft of 0.1 has been considered the upper limit of smoke concentration for human tenability, but this value is now considered by some to be too high, with a value on the order of 0.06 od/ft being suggested.



## 7. CONCLUSIONS AND RECOMMENDATIONS

The following are the conclusions and recommendations resulting from this study:

1. The vertical movement of smoke through elevator shafts in a high-rise apartment building, with no smoke control measures, in the case of a simulated fire is very rapid. Using 2 percent burn-room concentration as a safety limit, the results indicate that the portion of the building above the neutral plane, approximately the midheight, is rendered uninhabitable after a duration of five minutes.
2. Smokeproof corridor doors actuated by smoke detectors can be effective if the pressure difference across the door due to the ventilation system is in the favorable direction, i.e., lower pressure on the fire side.
3. A smokeproof tower with an exterior venting vestibule of the type used in the building investigated may not be smoke free if there is a problem of door opening overlap in the vestibule. Possible remedies for this type of smoke accumulation in the tower is by top-venting which was incorporated in the test building subsequent to the final tests, or a detector actuated exhaust fan at top of the tower. Another method would be to speed-up the operation of the door closers so that the doors remain open for the least possible period of time. However, with a number of people passing through at one time, as in an emergency, it is probable that there will be overlap in the opening of the vestibule entry and exit doors, thus defeating the venting system. In this case, it may be necessary to give consideration to the use of pressurized vestibules to prevent the entrance of smoke.
4. As the sensitivity of the photoelectric type smoke detectors installed in the test building appears to depend strongly on airflow velocity, consideration should be given to changes in the aerodynamic entry design of the detectors to allow operation at the low air velocities normally encountered in building corridors, the use of another type of detector.

## 8. REFERENCES

1. Hutcheon, N. B. and Shorter, G. W., Smoke Problems in High-Rise Buildings, ASHRAE Journal, 9 (1968).
2. Galbreath, M., Fire in High Building, National Research Council of Canada, Fire Study No. 21. (1968).
3. McGuire, J. H., Control of Smoke in Building Fires, Fire Technology, Vol. 3, No. 3 (Aug. 1967).
4. McGuire, J. H., Control of Smoke in Building Fires, Fire Technology, Vol. 3, No. 4 (Nov. 1967).
5. Tamura, G. T., and Wilson, A. G., Building Pressures Caused by Chimney Action and Mechanical Ventilation, ASHRAE Transactions, Vol. 73, Part II (1967).
6. Tamura, G. T. and Wilson, A. G., Pressure Differences Caused by Chimney Effect in Three High Buildings, ASHRAE Transactions, Vol. 73, Part II (1967).
7. Barrelet, R. E. and Locklin, D. W., Computer Analysis of Stack Effect in High-Rise Buildings, presented at ASHRAE 1968 Annual Meeting at Lake Placid, New York, (Aug. 1968).
8. Butcher, E. G., Fardell, P. J. and Clarke, J., Pressurization as a Means of Controlling the Movement of Smoke and Toxic Gases on Escape Routes, Joint Fire Research Organization Symposium No. 4, Movement of Smoke on Escape Route in Buildings, Paper 5, Watford, England, (1969).
9. Butcher, E. G. and Hall, M., Smoke Tests in New Law Courts Building, Joint Fire Research Organization Research Note No. 889, Borehamwood, England (1971).
10. Mechanically Ventilated Smoke Proof Enclosure, Los Angeles Fire Department, City of Los Angeles BFP and PA Requirement No. 56 (1970).
11. Butcher, E. G., Cottle, T. H. and Bailey, T. A., Smoke Tests in the Pressurized Stairs and Lobbies of a 26-Story Office Building, CP 4/74, Building Research Establishment, Fire Research Station, Borehamwood, England.
12. Fung, Francis C. W., Evaluation of a Pressurized Stairwell Smoke Control System for a 12-Story Apartment Building, Nat. Bur. Stand. (U.S.), NBSIR 73-277 (June 1973).

13. Hobson, P. J. and Stewart, L. J., Pressurization of Escape Routes in Buildings, Heating and Ventilating Research Association, Bracknell Berkshire, England.
14. Galbreath, M., McGuire, J. H. and Tamura, G. T., Exploratory Paper on Control of Smoke Movement in High-Rise Buildings, NRC No. 11413, National Research Council of Canada, Ottawa, (1970).
15. Guide Criteria for the Evaluation of Operation BREAK-THROUGH Housing Systems, Department of Housing and Urban Development (HUD), Vol. 1, Multifamily High-Rise.
16. Bukowski, R. W. and Bright, R. G., Some Problems Noted in the Use of Taguchi Semiconductor Gas Sensors as Residential Fire/Smoke Detectors, Nat. Bur. Stand. (U.S.) NBSIR 74-591 (Dec. 1974).

Table 1. Smoke Movement Test 1

Location	Time (min)	Concentration (ppb)	Percent of Burn Room Concentration
4th floor corridor	5	0	0
4th floor stair	5	0	0
4th floor corridor	20	2.3	1.2
4th floor stair	20	0	0
4th floor corridor	50	5.8	3.0
4th floor stair	50	0	0
5th floor corridor	6	0	0
5th floor stair	8	0	0
5th floor corridor	30	0	0
5th floor corridor	54	7.8	4.1
6th floor stair	44	0	0
9th floor stair	47	0	0
16th floor corridor	5	53.2	27.5
16th floor stair	5	0	0
16th floor corridor	15	131.8	68.1
16th floor stair	17	1.5	0.8
18th floor corridor	30	137.9	71.2
18th floor stair	32	126.3	65.2

Burn Room Location: Apt. 3E in front of elevator

Burn Room Concentration: 193.65 ppb

Burn Room Over Pressure: 0.04" H<sub>2</sub>O

Burn Room Out Flow: 824 cfm

Temperature, Outside: 54 °F

Inside: 70 °F

Burn Room: 82 °F

Table 2. Smoke Movement Test 2  
(Study of Door Openings)

Location	Time (min)	Concentration (ppb)	Percent of Burn Room Concentration
4th floor corridor	5	0	0
4th floor stair	5	0	0
4th floor stair	35	1.0	0.5
4th floor corridor	40	1.6	0.8
10th floor corridor	5	3.25	1.7
10th floor stair	5	0	0
10th floor corridor	15	10.5	5.5
10th floor stair	15	0	0
10th floor corridor	25	33.7	17.8
10th floor stair	25	4.1	2.2
14th floor corridor	35	58.1	30.6
14th floor stair	35	33.1	17.4
14th floor corridor	43	58.1	30.6
14th floor stair	43	47.2	24.9
18th floor corridor	47	87.9	46.3
18th floor stair	47	94.6	49.8
18th floor corridor	55	120.3	63.4
18th floor stair	55	120.3	63.4

Burn Room Location: Apt. 3E in front of elevator  
 Burn Room Concentration: 189.8 ppb  
 Burn Room Over Pressure: 0.03" H<sub>2</sub>O  
 Burn Room Out Flow: 870 cfm  
 Temperatures, Outside: 58 °F  
                   Inside: 74 °F  
                   Burn Room: 82 °F

Table 3. Smoke Detector Laboratory Tests

Alarm Points at Different Air Velocities						
Detector No.	15 fpm		50 fpm		150 fpm	
	od/ft*	ob/ft**	od/ft	ob/ft	ob/ft	ob/ft
1	1.061	13.09%	0.0068	1.55%	0.0044	1.0%
2	0.056	12.10%	0.0029	0.67%	0.0019	0.44%
3	0.107	21.77%	0.048	10.42%	0.0050	1.15%
4	0.106	21.72%	0.014	3.08%	0.0064	1.46%
5	0.058	12.50%	0.011	2.61%	0.0028	0.65%

\* od - optical density

\*\* ob - obscuration

Table 4. Smoke Detector Field Tests

Location & Time	Photometer 1		Photometer 2		Photometer 3		Remarks
	ob/ft*	od/ft**	ob/ft	od/ft	ob/ft	od/ft	
Detector Test 1							
2:00	3.4	0.015	0.0	0.0	0.0	0.0	
3:45	86.4	0.87	65.8	0.47	3.4	0.015	Alarm went off at Detector 1.
4:45	86.4	0.87	79.5	0.67	28.9	0.15	
10:00	50.3	0.31	28.9	0.15	41.3	0.23	
Detector Test 2							
3:00	3.4	0.015	0.0	0.0	0.0	0.0	
3:30	28.9	0.15	6.8	.03	0	0	Alarm went off at Detector 1.
7:00	38.7	0.21	39.5	0.22	21.2	0.1	
10:00	25.7	0.13	28.9	0.15	0	0	

\* percent obscuration per foot

\*\* optical density per foot

1. No measurable airflow in corridor, visual judgement indicates below 10 fpm.
2. Smoke doors closed as alarm went off, observer on other side of doors not affected by smoke for a duration of 15 minutes.
3. In first test heavy smoke front approached 1st detector at 2 minutes.  
In second test light smoke front approached 1st detector at 2 minutes.

Table 5. Visual Observations of Smoke  
Detector Field Tests

Test 1 - High Smoke Level Time

Time min:sec	Observations
0:0	Smoke candle lit, located in front of Apartments 3B and 3C at floor level, distance to detector 1 about 10 ft.
1:00	Heavy smoke immediately in area adjacent to smoke candle.
2:00	Movement of smoke front towards first detector at low velocity, very little diffusion observed at this point. Velocity of smoke front less than 10 fpm.
3:00	Heavy smoke surrounding detector 1.
3:45	Alarm went off at detector No. 1.
5:00	Gradual movement of smoke, also diffusion of smoke front. Smoke contained by closed smoke barrier door.
10:00	Maximum smoke level reached at photometer 3.

Test 2 - Low Smoke Level Test

0:0	Smoke candle lit inside Apartment 3C kitchen.
1:00	No visible smoke out of Apartment 3C door yet.
2:00	Light smoke slowly approaching first detector at velocity less than 10 fpm.
2:50	Light smoke approaching second detector.
3:30	Alarm went off at detector No. 1.
7:00	Smoke diffused and filled corridor, however, contained to one side of closed smoke barrier door. Smoke intensity is at a maximum at this point.
10:00	Smoke intensity leveling off due to leakage through apartment and stairwell. Observer on other side of corridor protected by smoke barrier door still not affected by smoke.
15:00	Termination of test, smoke barrier door effectively protects observer on other side of door. Only light smoke infiltrated.



## APPENDIX A

Definition of "smokeproof stair enclosure," Criterion L.4.2.9, Vol. I, Operation BREAKTHROUGH Guide Criteria.

"A stair enclosure so designed that the movement of products of combustion, produced by a fire occurring in any part of the building, into the smokeproof stair enclosure, should be limited by the use of an appropriate design method to ensure that with the minimum winter exterior dry bulb temperature (based on the ASHRAE design tables for 97-1/2 percent probability for the geographical location of the building), the atmosphere in the stair enclosure should not, during a period of two hours, develop a contaminated atmosphere emanating from the fire area that is more than one (1) percent of the volume of the smokeproof stair enclosure."

## APPENDIX B

Other safety provisions incorporated in lieu of exit stairway separation:

1. Single-station-type smoke detectors should be installed in the two end apartments, one apartment at each end of the building; having travel distances greater than 50 feet within the apartment. Because of the apartment length, two smoke detectors in each apartment would be necessary.
2. The building areas on either side of the smoke barrier doors should have separate heating, ventilation and air conditioning services.
3. Apartment doors should be Class B, one-hour fire-resistance doors with 250 °F-30-minute temperature limits. Door frames should also be "labeled". Doors should be tight-fitting with no more than 1/8-inch clearance at the top and sides and 3/4-inch at the bottom. The doors should be equipped with self-closing devices.
4. The wall between the stairwells should be 1-1/2-hour in fire resistance and carried through to the corridor wall between the elevator shafts.

U.S. DEPT. OF COMM. BIBLIOGRAPHIC DATA SHEET	1. PUBLICATION OR REPORT NO. NBS IR 75-701	2. Gov't Accession No.	3. Recipient's Accession No.
4. TITLE AND SUBTITLE  Evaluation of Smokeproof Stair Towers and Smoke Detector Performance		5. Publication Date September 1975	
7. AUTHOR(S) Francis C. W. Fung and Richard H. Zile		6. Performing Organization Code	
9. PERFORMING ORGANIZATION NAME AND ADDRESS  NATIONAL BUREAU OF STANDARDS DEPARTMENT OF COMMERCE WASHINGTON, D.C. 20234		8. Performing Organ. Report No. IR 75-701	
12. Sponsoring Organization Name and Complete Address (Street, City, State, ZIP) Office of Policy Development and Research Department of Housing and Urban Development Washington, D.C. 20410		10. Project/Task/Work Unit No. 4928283	
15. SUPPLEMENTARY NOTES		11. Contract/Grant No.	
16. ABSTRACT (A 200-word or less factual summary of most significant information. If document includes a significant bibliography or literature survey, mention it here.)  A study was made by the National Bureau of Standards to evaluate the effectiveness of a smokeproof stairwell tower installed in a high-rise apartment building. Tests were also made of photoelectric-type corridor smoke detectors. A quantitative experimental technique of smoke simulation and smoke movement measurement was used. Factors diminishing the effectiveness of the stair towers, preventing smoke infiltration and limiting the response of the detectors, are noted.		13. Type of Report & Period Covered Final	
17. KEY WORDS (six to twelve entries; alphabetical order; capitalize only the first letter of the first key word unless a proper name; separated by semicolons)  High-rise buildings; photoelectric smoke detector; smoke control; smoke movement simulation; smokeproof tower.		14. Sponsoring Agency Code	
18. AVAILABILITY <input checked="" type="checkbox"/> Unlimited  <input type="checkbox"/> For Official Distribution. Do Not Release to NTIS  <input type="checkbox"/> Order From Sup. of Doc., U.S. Government Printing Office Washington, D.C. 20402, SD Cat. No. C13  <input checked="" type="checkbox"/> Order From National Technical Information Service (NTIS) Springfield, Virginia 22151	19. SECURITY CLASS (THIS REPORT)  UNCLASSIFIED	21. NO. OF PAGES  23	
		20. SECURITY CLASS (THIS PAGE)  UNCLASSIFIED	22. Price  \$ 3.25



