

HOW TO USE THE COLOR NAME CHARTS 1 TO 34 ^a

Given: Munsell notation of the sample.

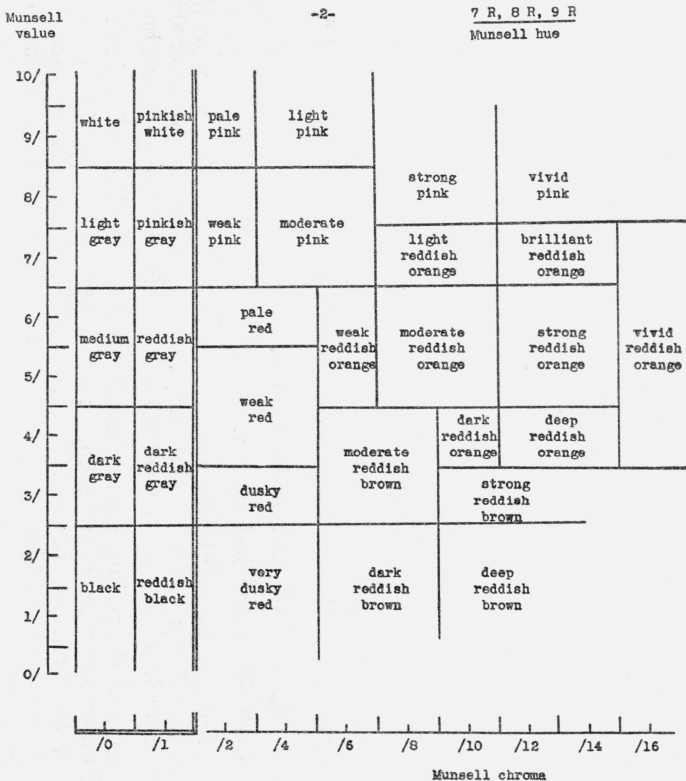
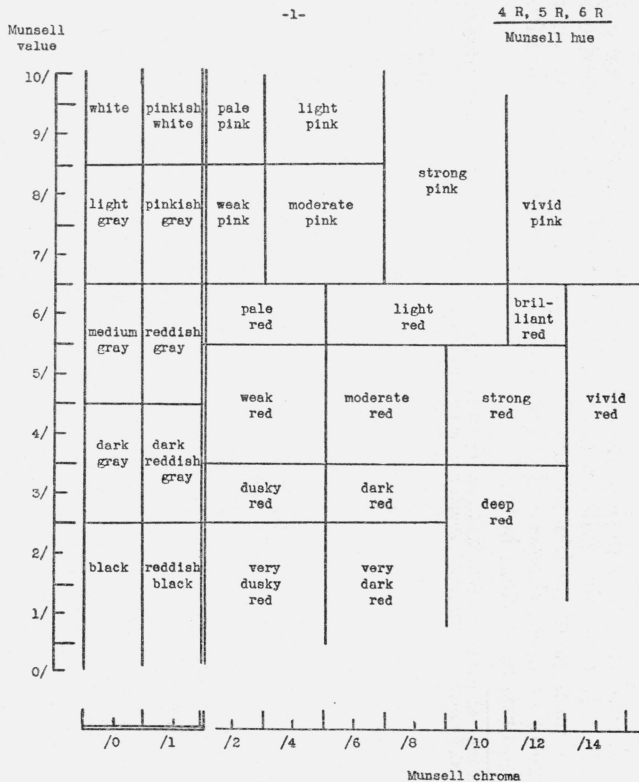
Required: The color designation.

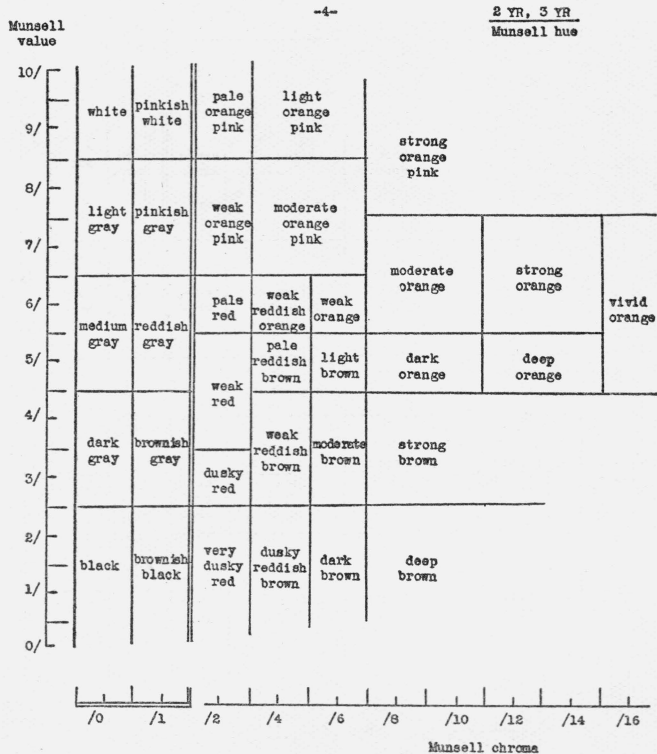
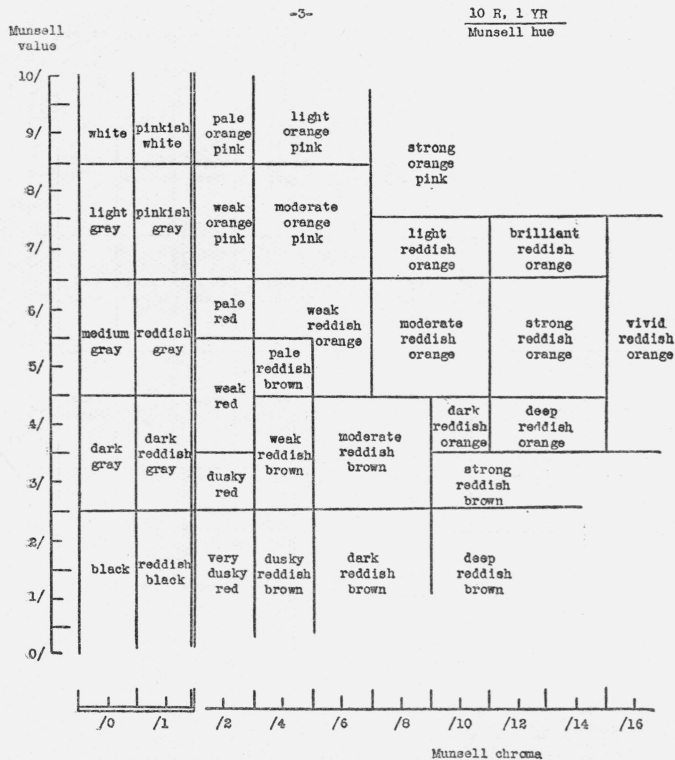
First, turn to the particular name chart referring most closely to the Munsell hue notation of the sample (see numbers at top of chart); or, if the hue is equally close to two successive charts, use them both.

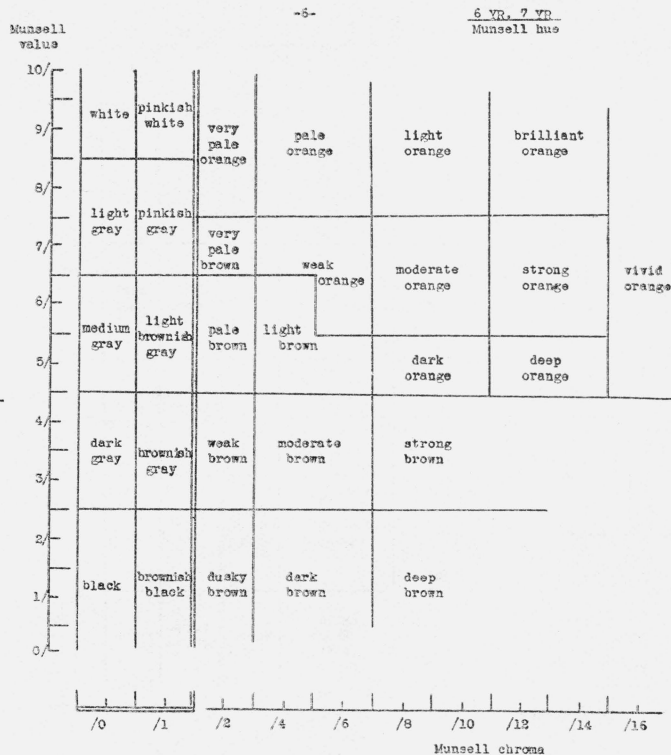
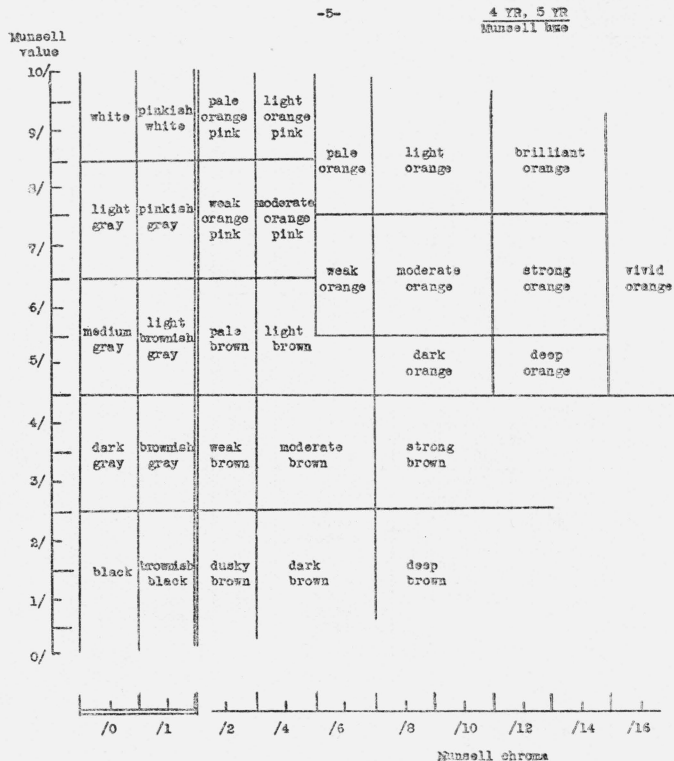
Second, find the point on the chart defined by the Munsell value and Munsell chroma of the sample; or, if two charts are to be used, plot the point on both of them. Note that the chroma scale is expanded for chromas less than 1.5; see vertical double line on each chart.

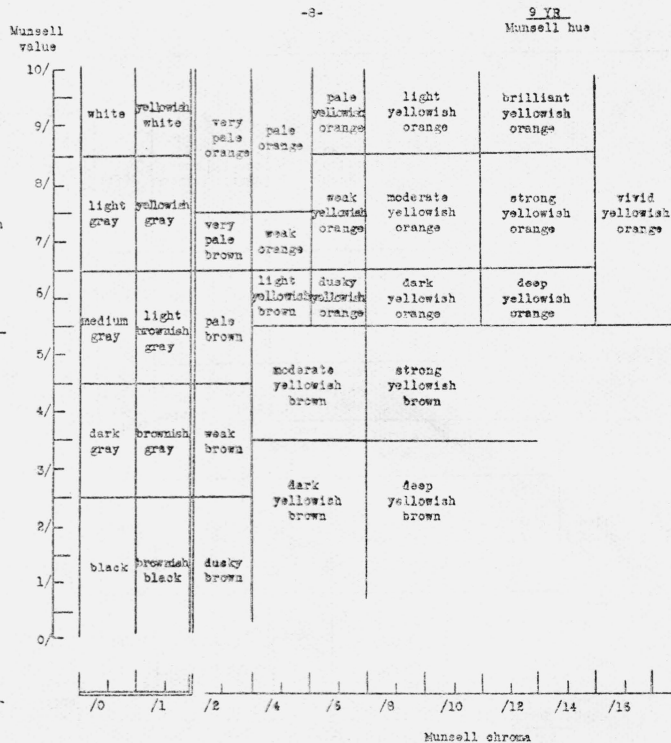
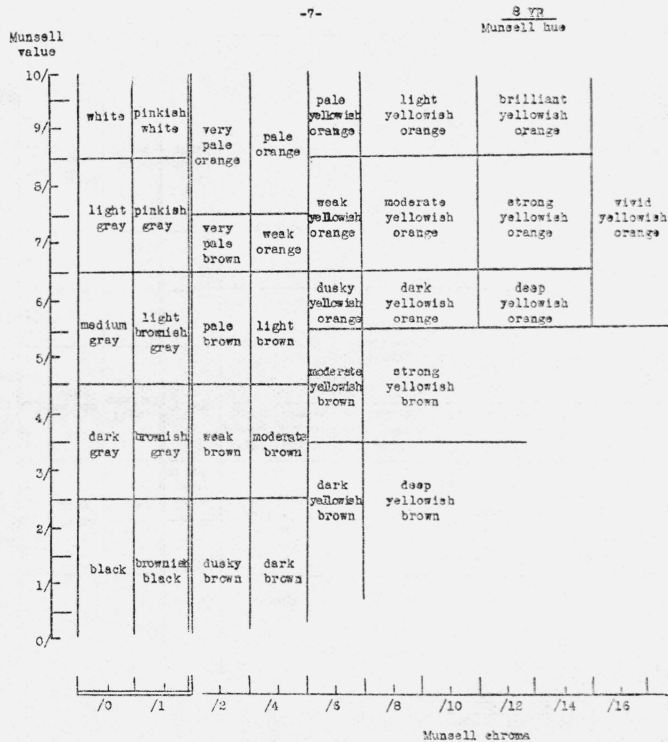
Third, read the color designation of the block within which the point falls. If the point falls on a boundary between blocks, read color designations of all blocks touching the point. If, when two charts are to be used, the second chart yields a different designation from the first, read them both.

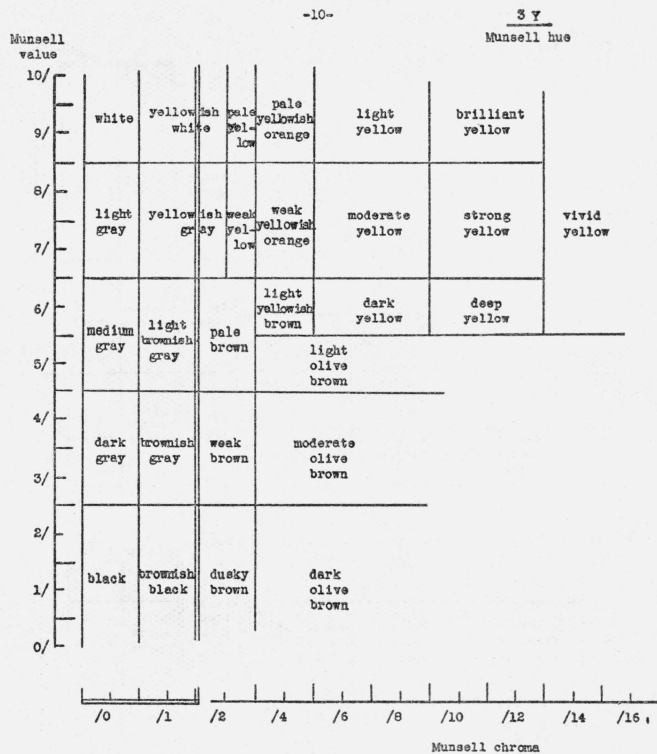
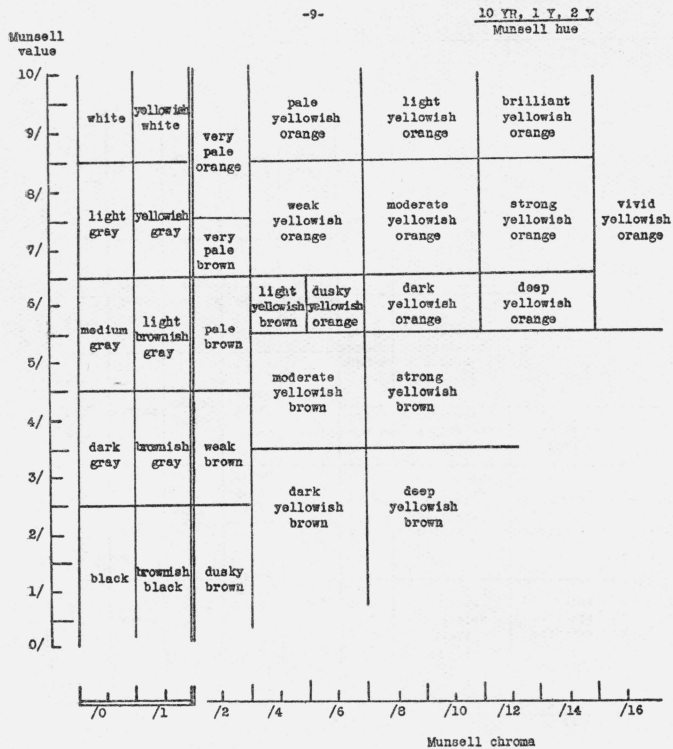
^a Acknowledgment is made to Miss Dorothy Nickerson, individual member of the Inter-Society Color Council, for suggesting the present simple form of these name charts.



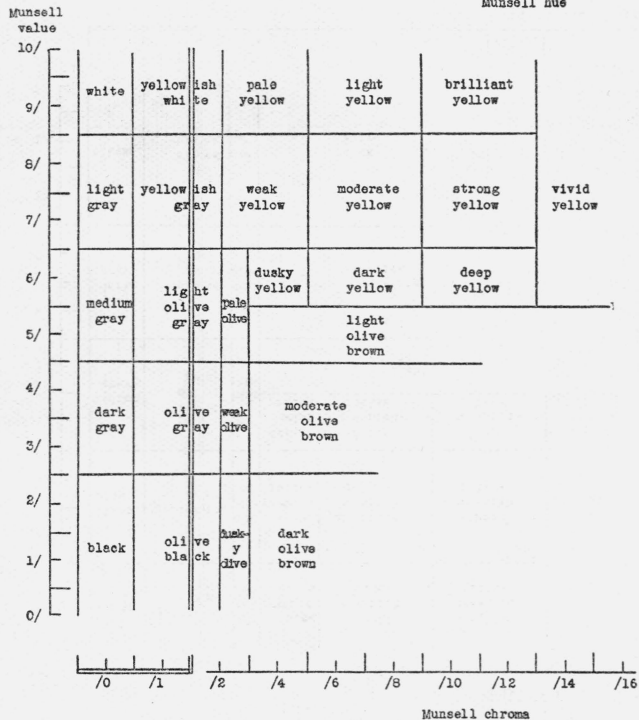




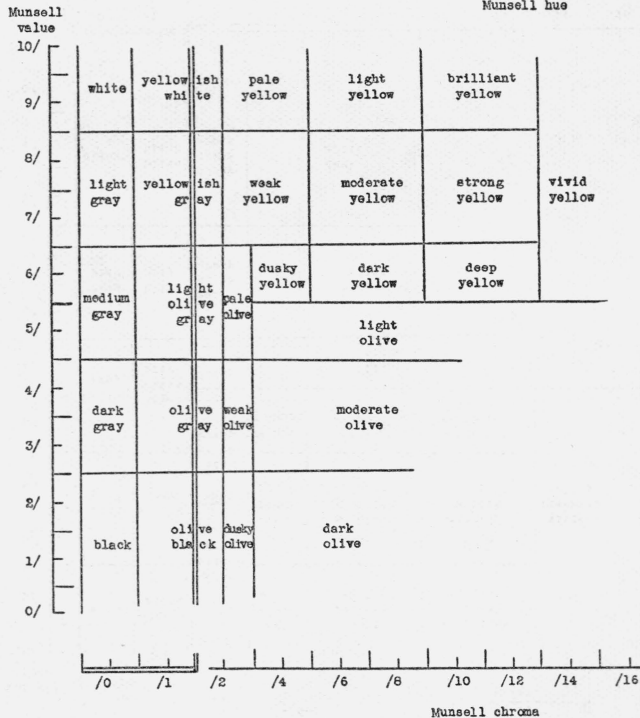




-11-

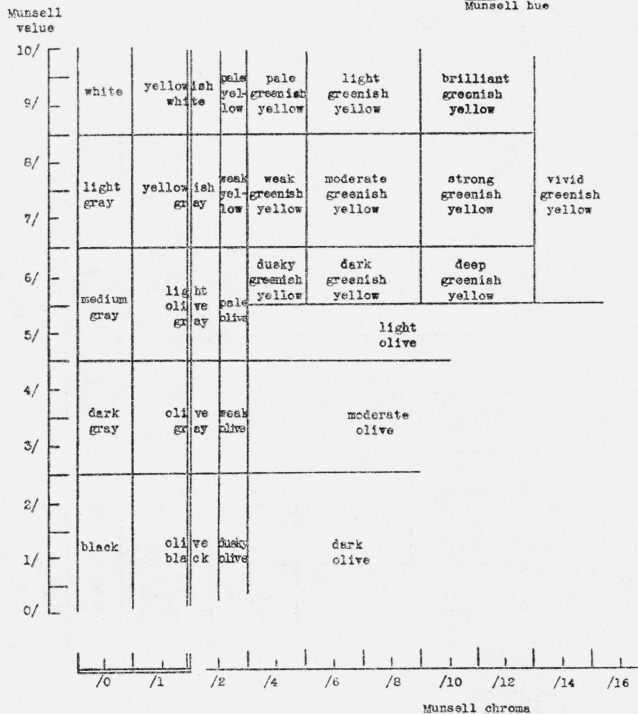
4 Y, 5 Y
Munsell hue

-12-

6 Y
Munsell hue

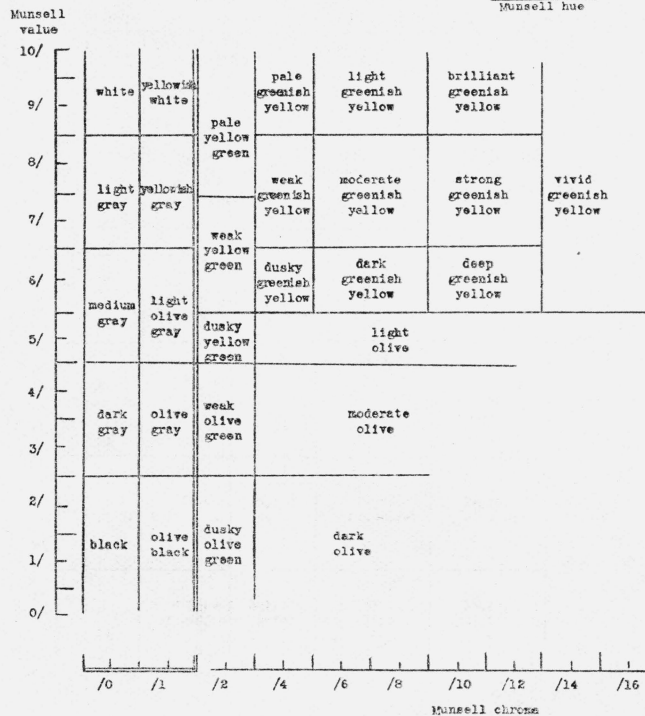
-13-

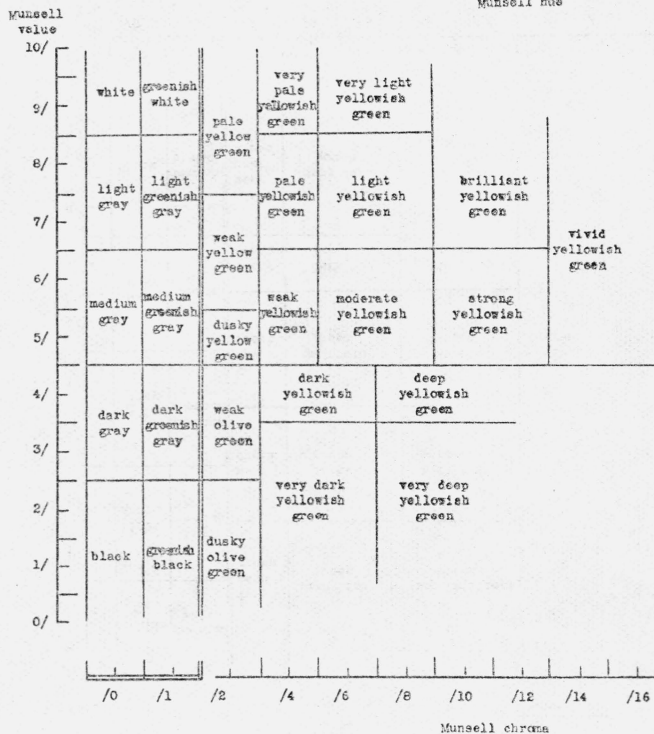
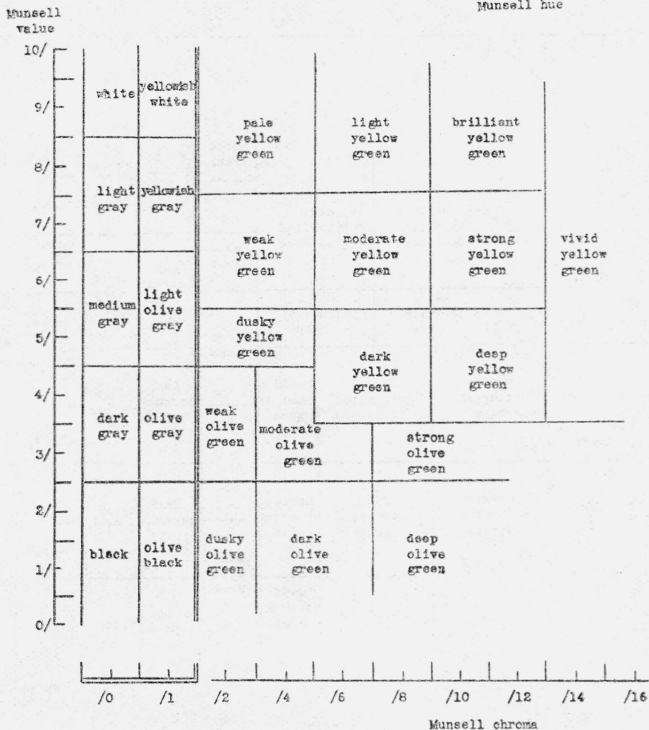
7 Y, 8 Y
Munsell Hue

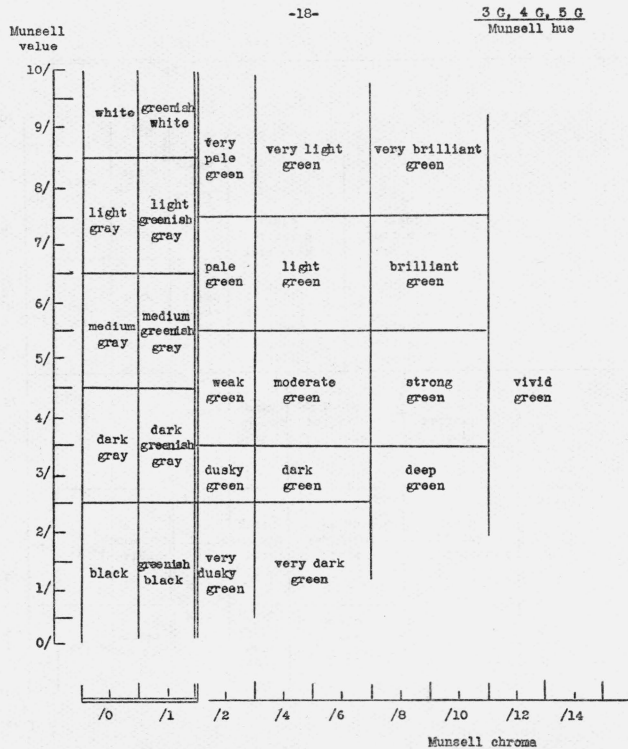
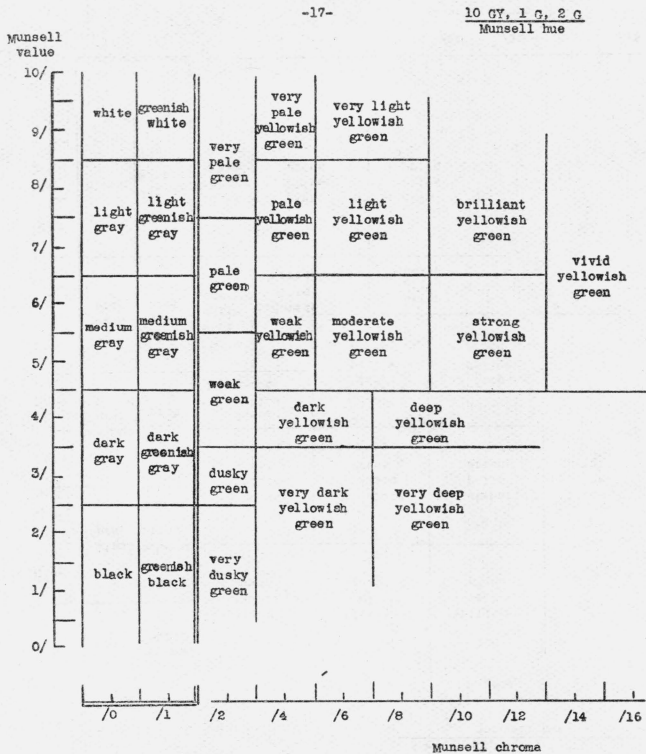


-14-

9 Y, 10 Y, 11 Y
Munsell hue

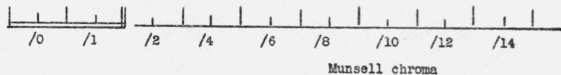






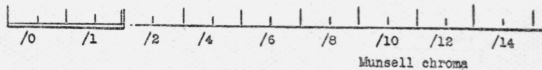
Munsell
value

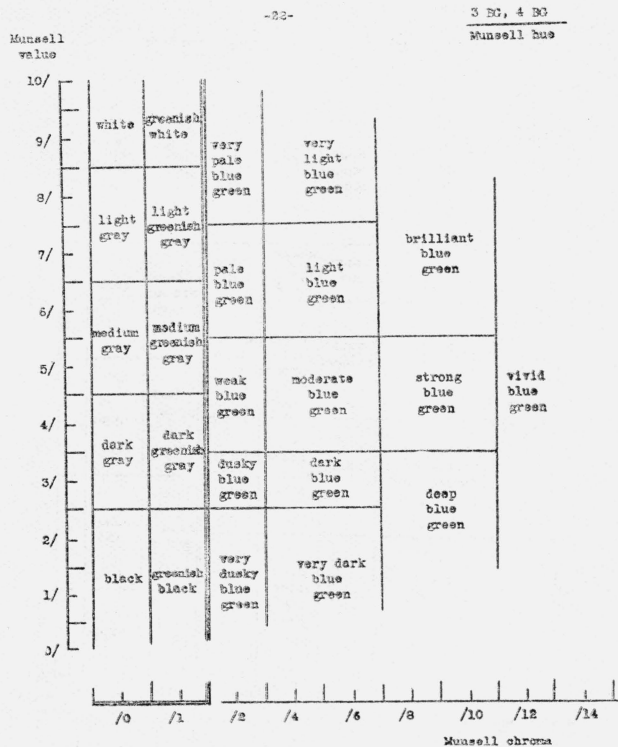
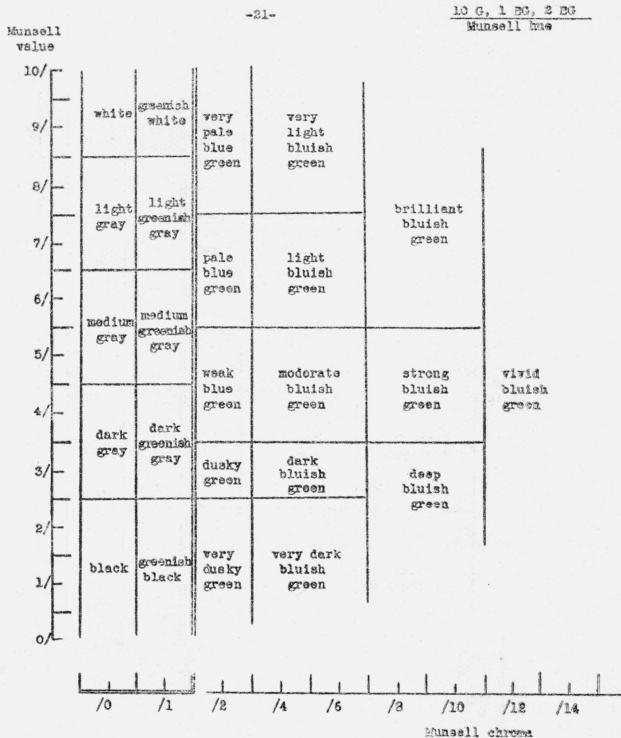
10/						
9/	white	greenish white	very pale blue green	very light green	very brilliant green	
8/						
7/	light gray	light greenish gray				
6/			pale blue green	light green	brilliant green	vivid green
5/	medium gray	medium greenish gray				
4/			weak blue green	moderate green	strong green	
3/	dark gray	dark greenish gray				
2/			dusky green	dark green	deep green	
1/	black	greenish black	very dusky green	very dark green		
0/						



Munsell
value

10/						
9/	white	greenish white	very pale blue green	very light bluish green	very light green	very brilliant green
8/						
7/	light gray	light greenish gray				
6/			pale blue green	light bluish green	light green	brilliant green
5/	medium gray	medium greenish gray				vivid green
4/			weak blue green	moderate bluish green	moderate green	
3/	dark gray	dark greenish gray				
2/			dusky green	dark bluish green	dark green	deep green
1/	black	greenish black	very dusky green	very dark bluish green	very dark green	
0/						



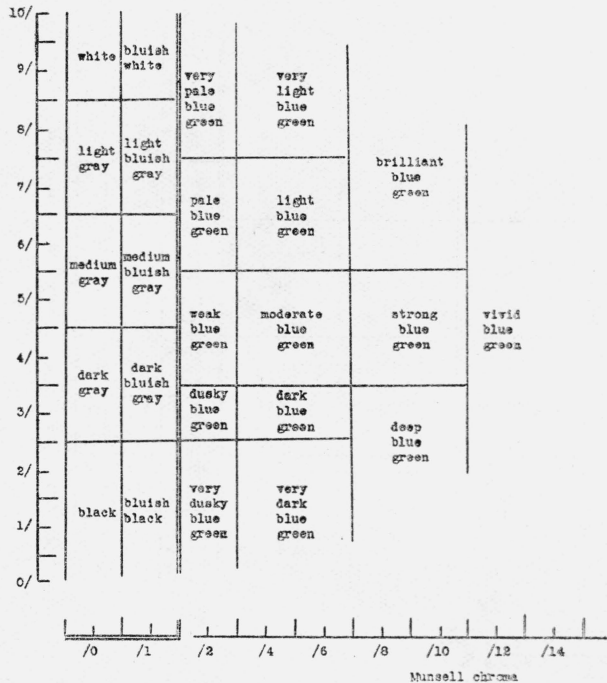


-23-

5 BG, 6 B1, 7 B2, 8 B3

Munsell hue

Munsell value

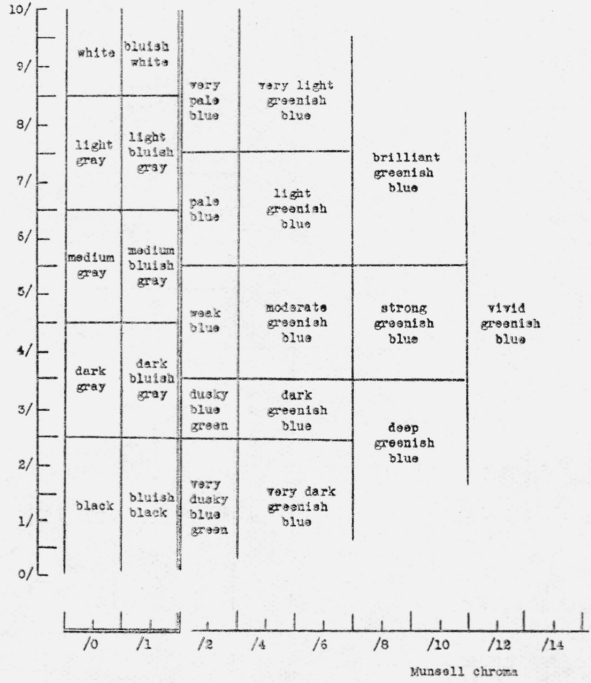


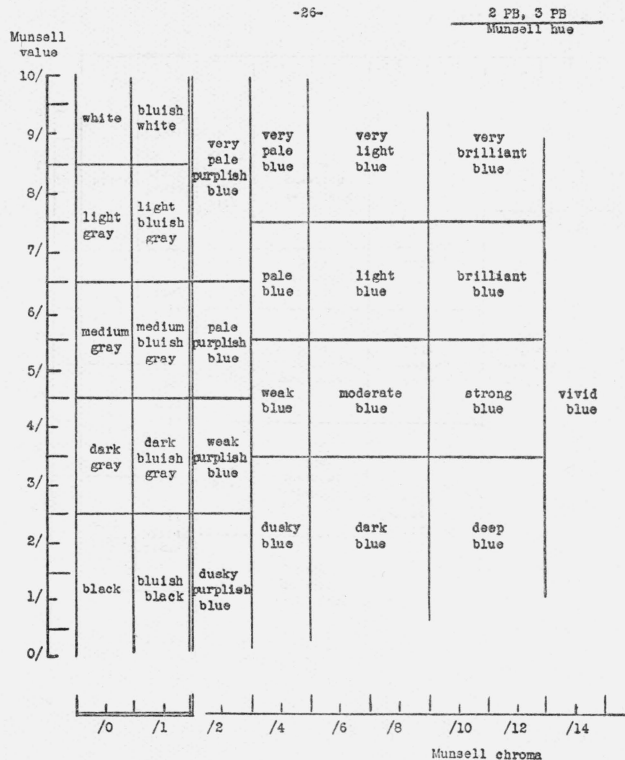
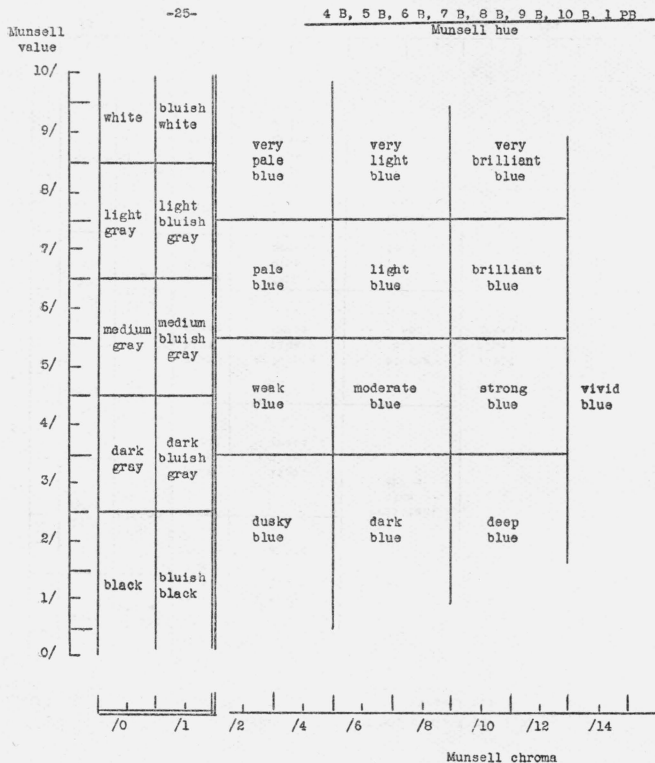
-24-

9 B4, 10 B1, 1 B2, 2 B3, 3 B3

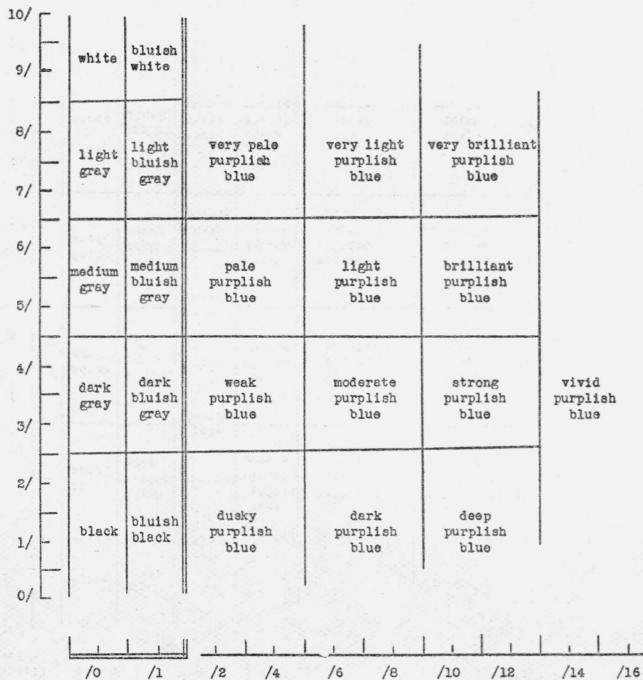
Munsell hue

Munsell value

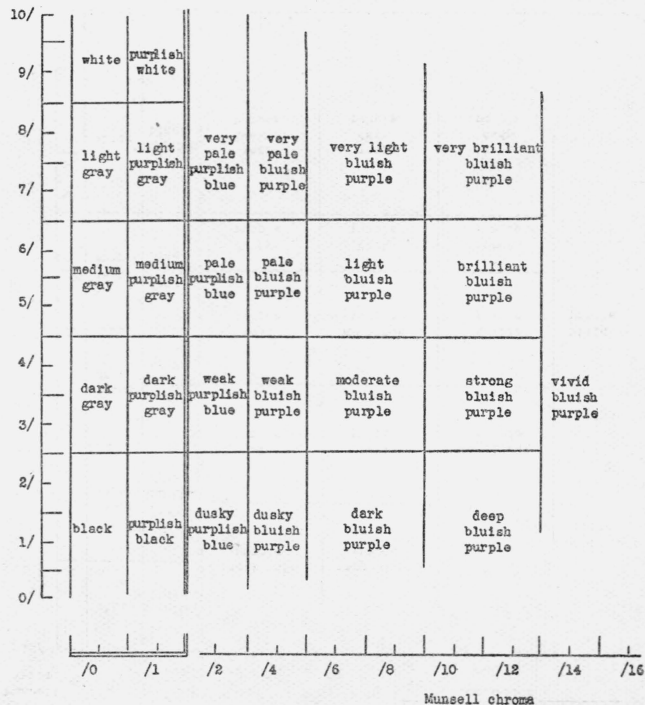


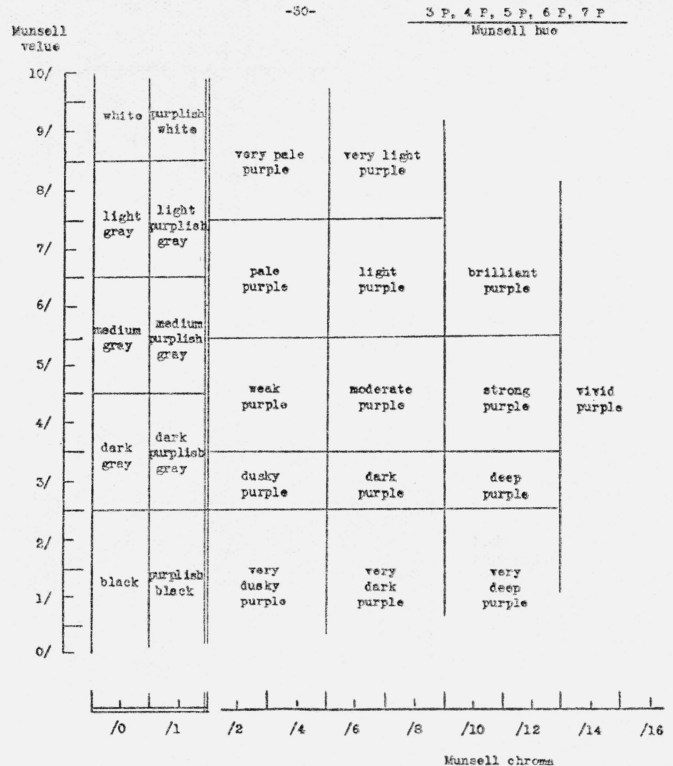
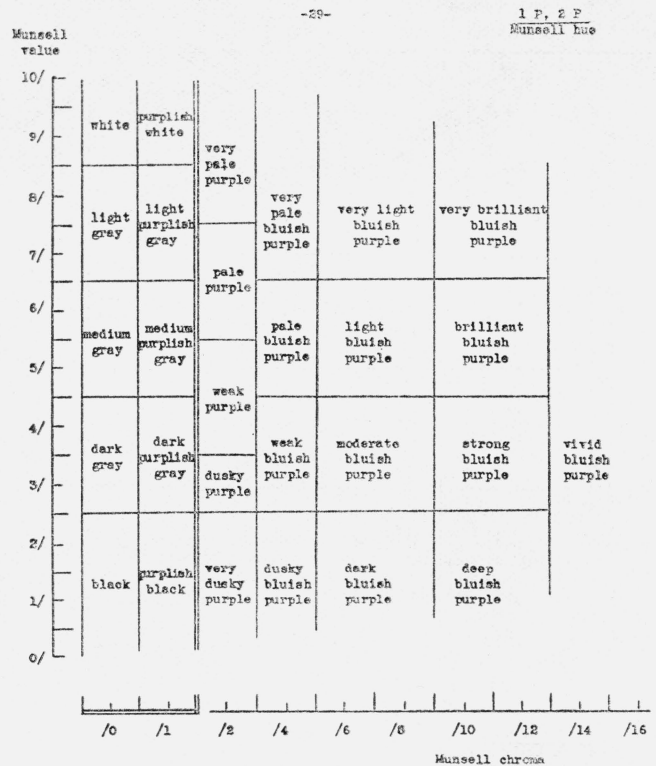


Munsell value



Munsell value

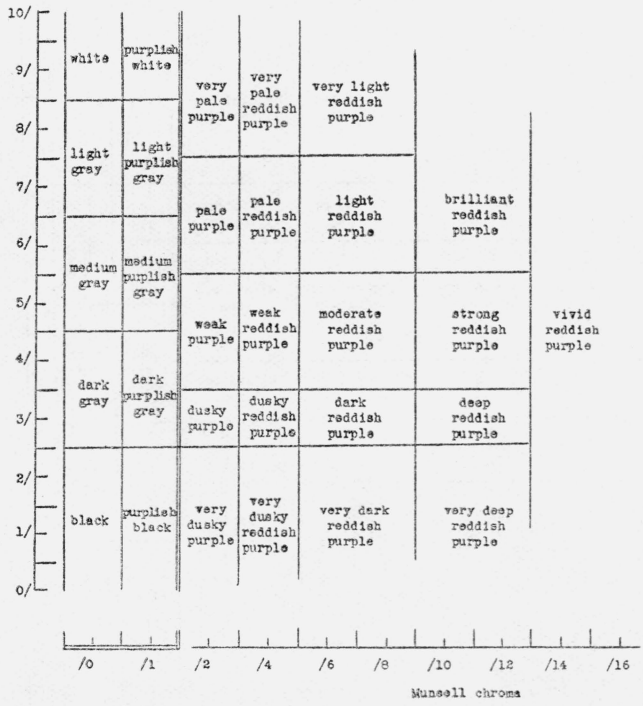




-31-

8 P, 9 P, 10 P, 1 RP
Munsell hue

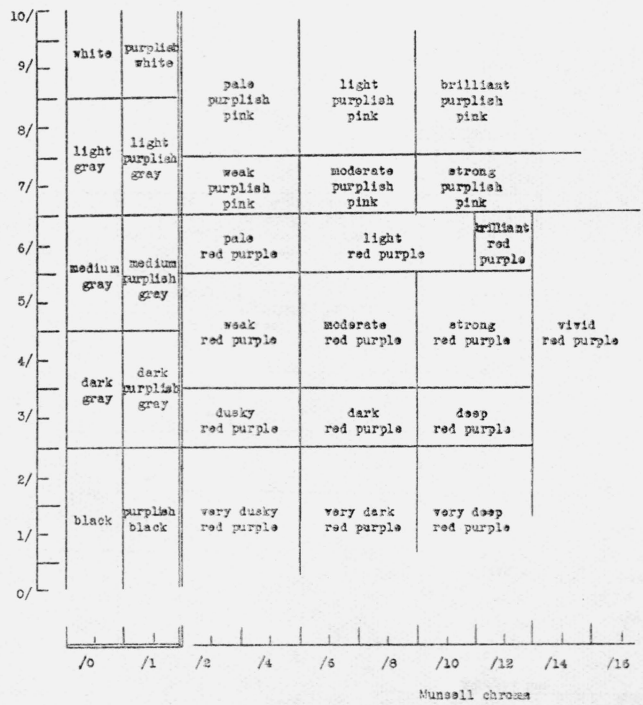
Munsell value



-32-

2 RP, 3 RP, 4 RP
Munsell hue

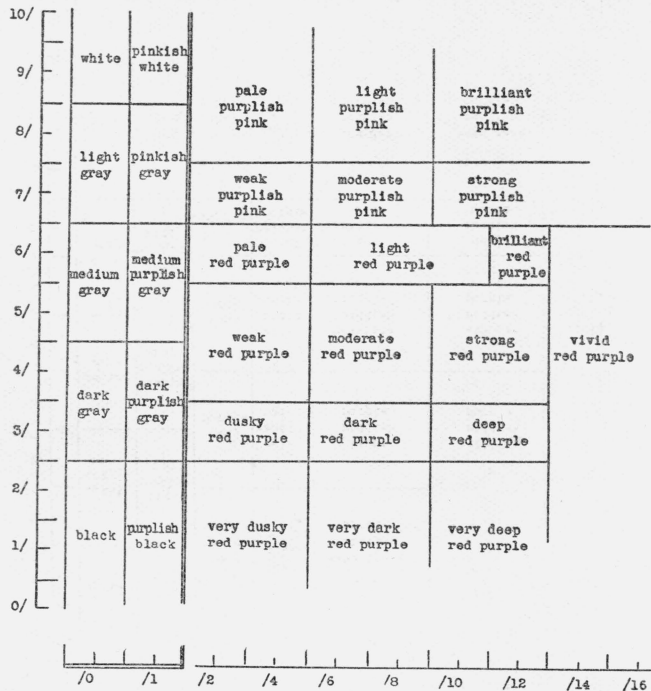
Munsell value



Munsell
value

-33-

5 RP, 6 RP, 7 RP
Munsell hue

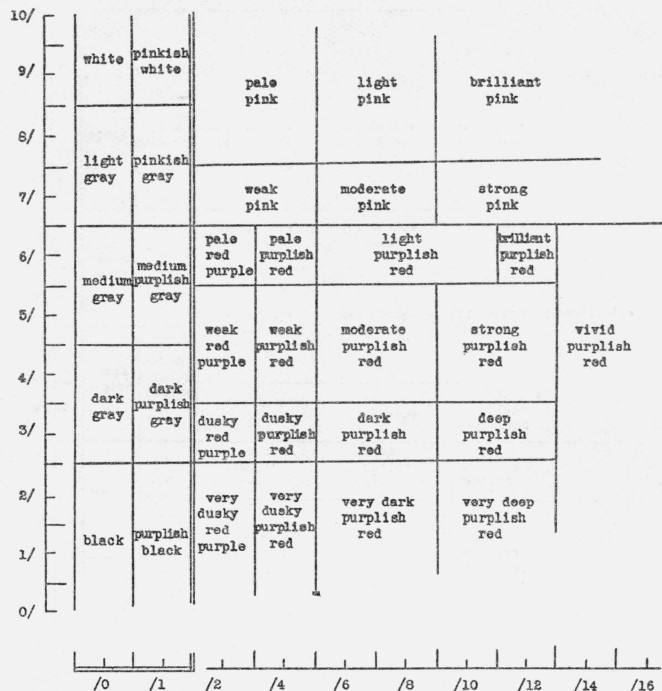


Munsell chroma

-34-

8 RP, 9 RP, 10 RP, 1 R, 2 R, 3 R
Munsell hue

Munsell
value



Munsell chroma

